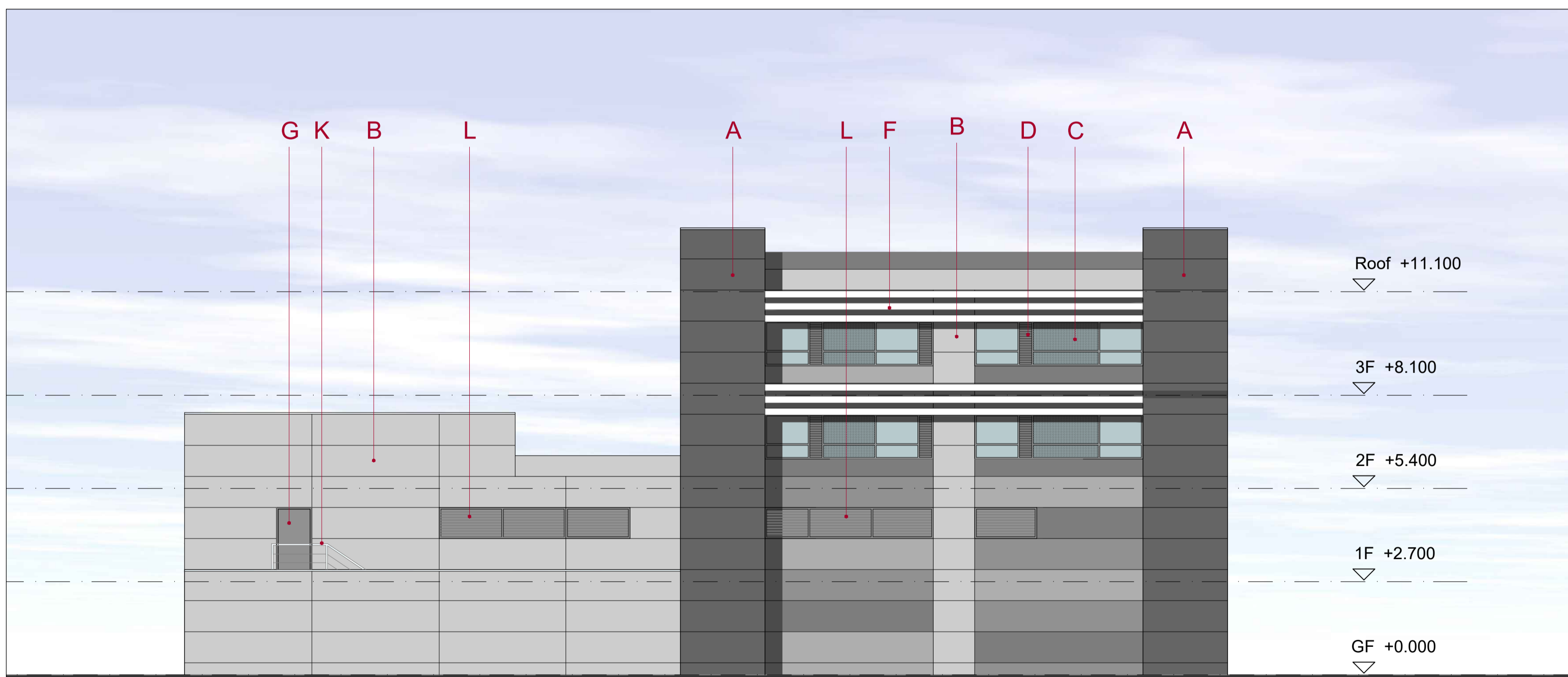




NORTH ELEVATION SCALE 1:100 @ A1



EAST ELEVATION SCALE 1:100 @ A1

MATERIALS KEY

- A** FIBRE CEMENT RAINSCREEN CLADDING - COLOUR DARK GREY
- B** POWDER COATED INSULATED CLADDING PANELS - VARIED PALETTE OF 3 TONES OF GREY / TBA
- C** POWDER COATED ALUMINIUM TRIPLE GLAZED WINDOW SYSTEM - FRAME COLOUR DARK GREY - WITH OPAQUE GLAZED SPANDREL PANELS AS INDICATED
- D** LOUVRED PANELS WITHIN GLAZING SYSTEM TO ACCOMMODATE AIR INTAKE AND EXTRACT - POWDER COATED TO MATCH FRAME COLOUR
- E** PROJECTING POWDER COATED ALUMINIUM EAVES BEAM - COLOUR GREY / TBA
- F** ALUMINIUM FIXED BLADE BRISE SOLEIL WINDOW SHADING - COLOUR GREY / TBA
- G** SOLID EXTERNAL ALUMINIUM DOORS - COLOUR GREY / TBA
- H** ALUMINIUM DOUBLE GLAZED ENTRANCE DOORS - COLOUR GREY / TBA
- J** SOLID STEEL GATES TO SERVICE YARD - POWDER COATED GREY - COLOUR TBA
- K** POWDER COATED STEEL ESCAPE STAIR WITH OPEN WIRE GUARDING - COLOUR GREY / TBA
- L** ALUMINIUM FIXED LOUVRE PANELS - COLOUR GREY / TBA
- M** LOUVRED ALUMINIUM SCREENING TO CONDENSOR UNITS



KEY PLAN

TH	REV A: SECOND FLOOR PLAN, RESTAURANT GLAZING AND LOUVRES UPDATED, COMPOUND ADDED	18.10.17	VER
TH DRAWN	DRAWN REVISION	JULY 17 DATE	



ARCHITECTS & DESIGNERS

7 Buxton Road West, Disley, Stockport, Cheshire, SK12 2AE.
 Telephone: 01663 763000
 Facsimile: 01663 766772
 Website: www.allisonpike.com Email: studio@allisonpike.com

© Allison Pike Partnership Limited.

PLANNING ISSUE

PROJECT	PREMIER INN OXFORD TECHNOLOGY PARK	
TITLE	PLANNING DRAWING PROPOSED ELEVATIONS 2	
SCALE	1:100 @ A1	
JOB No	DRAWING No	REV
PI662	AP19	A