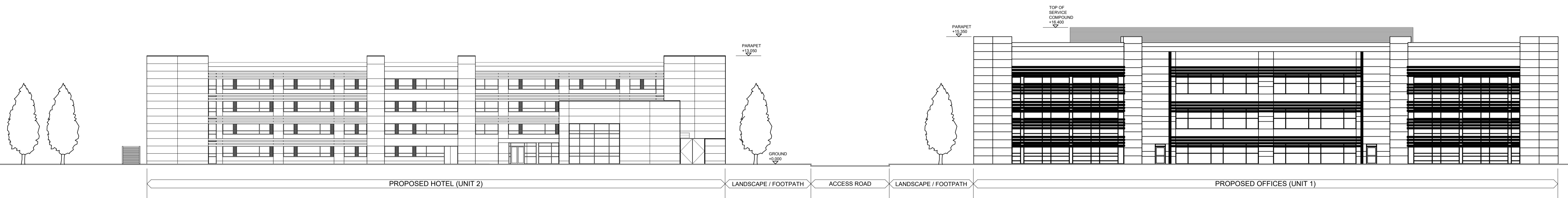


NORTH ELEVATION - FROM LANGFORD LANE
SCALE 1:100 @ A1



SOUTH ELEVATION - FROM WITHIN SITE
SCALE 1:100 @ A1

TH	REV A: SECOND FLOOR PLANT, RESTAURANT GLAZING AND LOUVRES UPDATED, COMPOUND ADDED	18.10.17
TH	DRAWN	OCT 17
DRAWN	REVISION	DATE VER

PROJECT PREMIER INN OXFORD TECHNOLOGY PARK		
TITLE PLANNING DRAWINGS COMBINED ELEVATIONS		
SCALE 1:250@A1		
JOB No Pl662	DRAWING No AP21	REV A



7 Buxton Road West, Disley,
Stockport, Cheshire, SK12 2AE.
Telephone: 01663 763000
Facsimile: 01663 766772
Website: www.allisonpike.com
Email: studio@allisonpike.com

© Allison Pike Partnership Limited.

PLANNING ISSUE