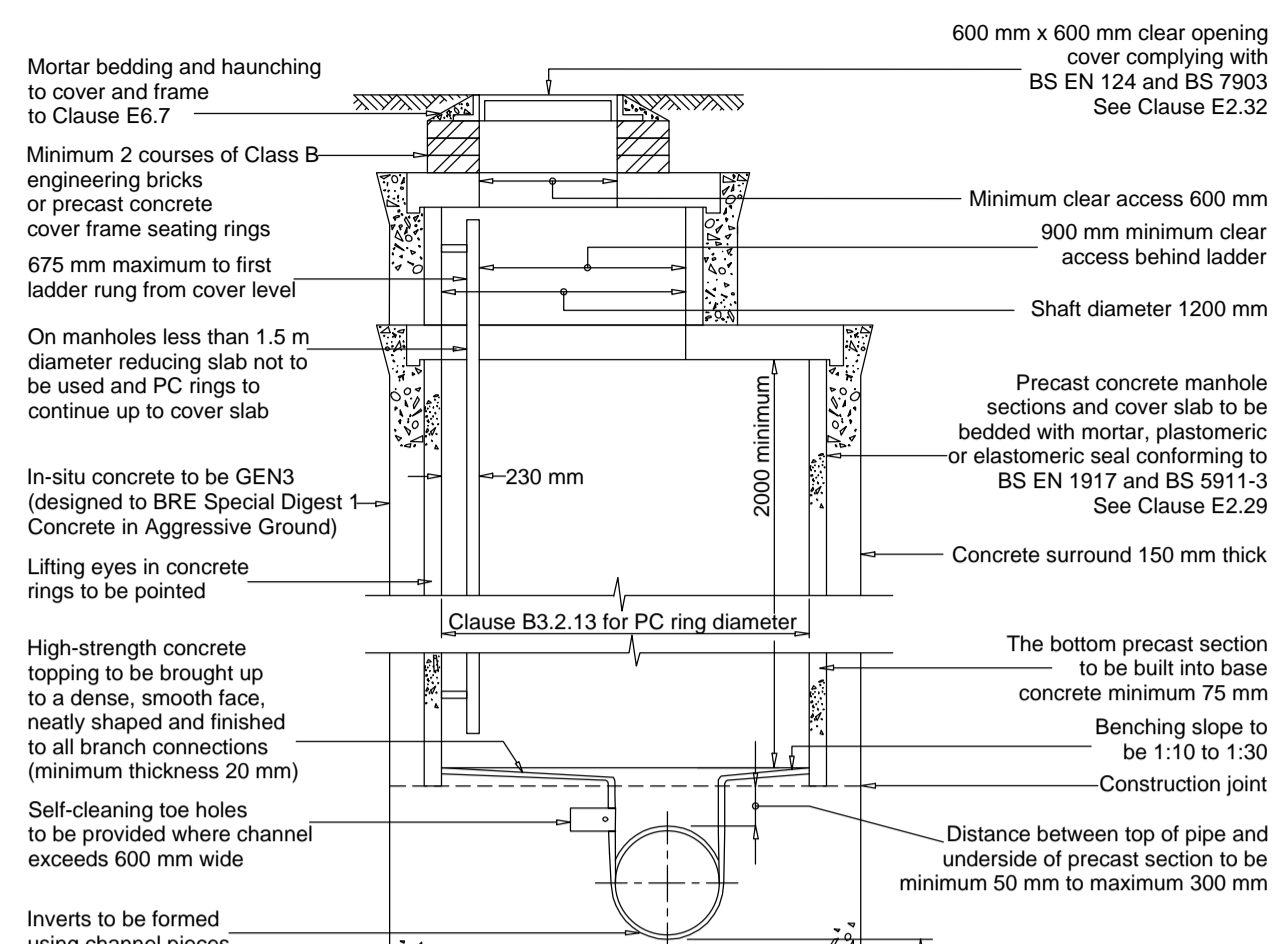


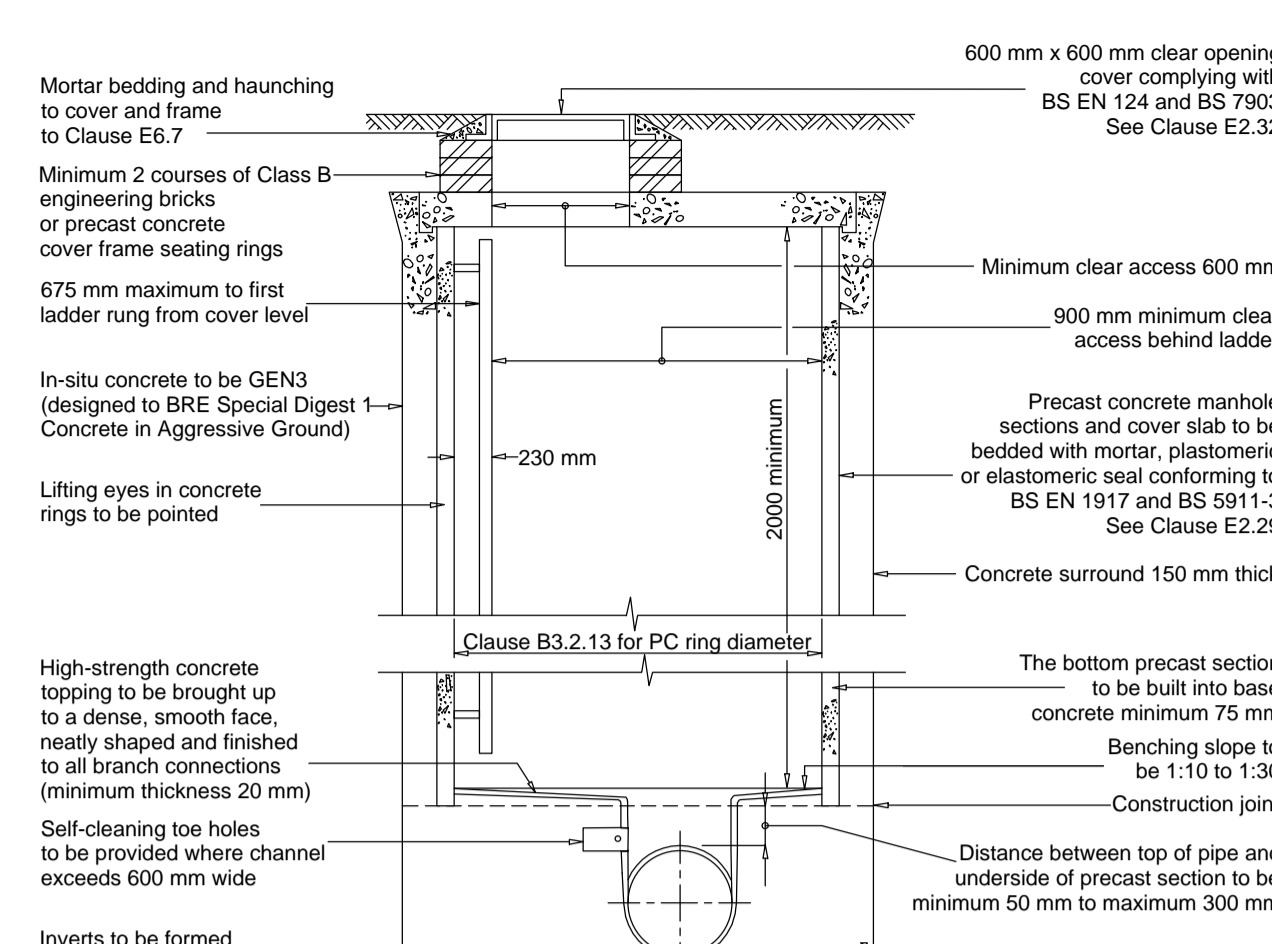
TYPICAL MANHOLE DETAIL - TYPE 2
FIGURE B.12

Maximum depth from cover level to soffit of pipe 3.0 m



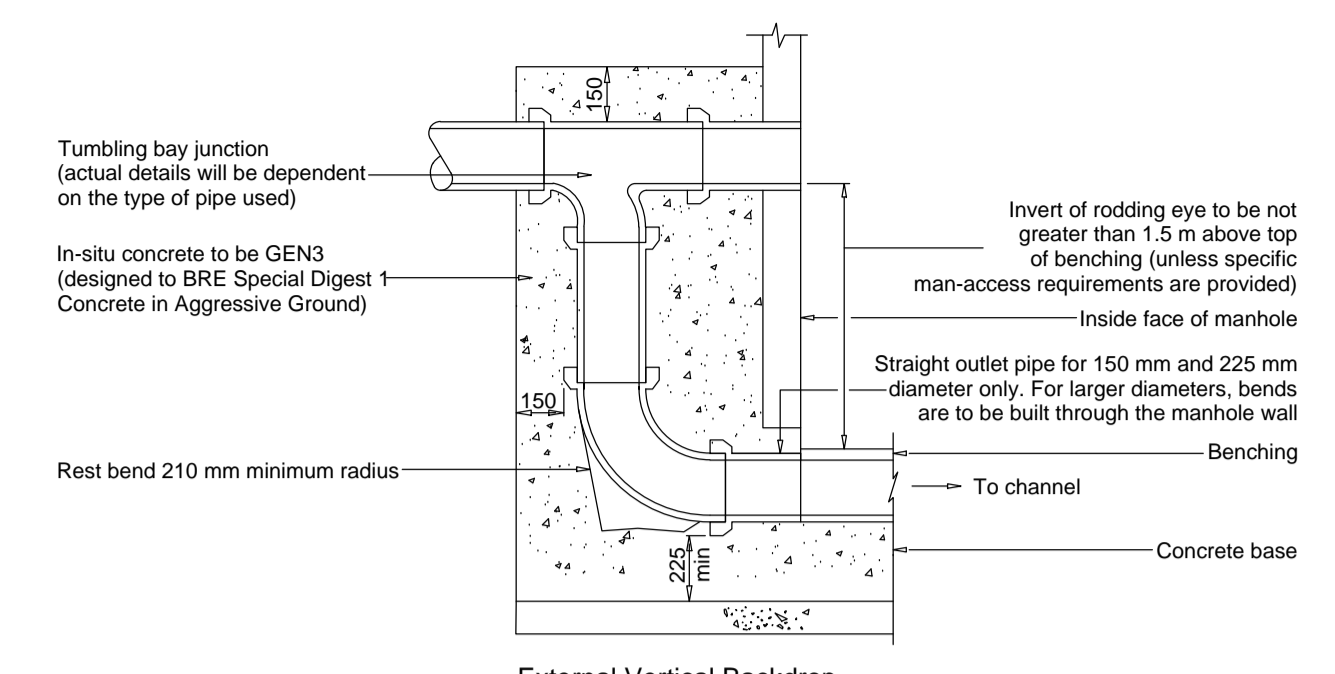
TYPICAL MANHOLE DETAIL - TYPE 1A
FIGURE B.8

Depth from cover level to soffit of pipe 3 m to 6 m



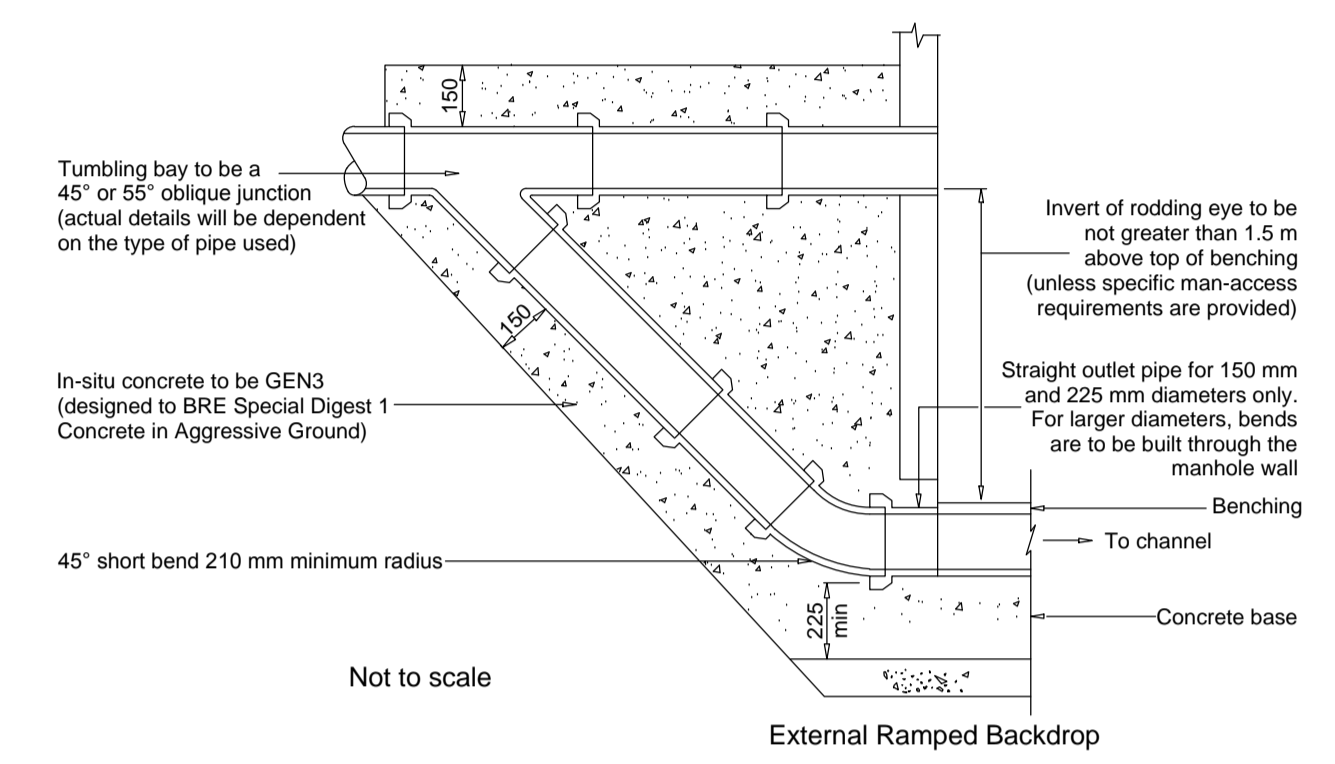
TYPICAL MANHOLE DETAIL - TYPE 1B
FIGURE B.10

Depth from cover level to soffit of pipe 3 m to 6 m

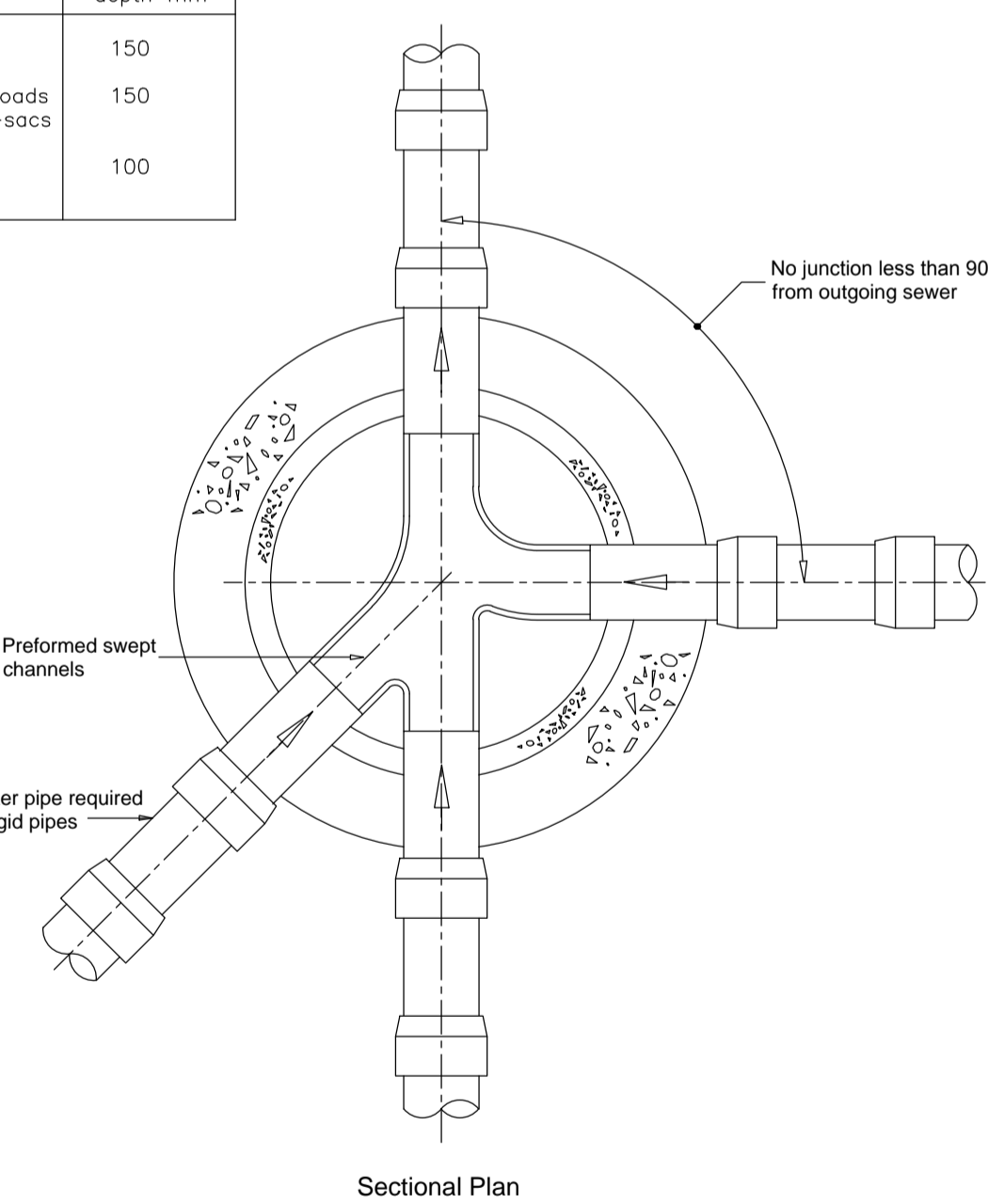


TYPICAL VERTICAL AND RAMPED BACKDROP DETAIL
FIGURE B.15

Note: Steeper gradients are preferred to the use of backdrops. Type of backdrop to be used to be agreed with Undertaker.



MANHOLE COVER & FRAMES	
Road Description	Min frame depth mm
Bus Routes	150
All residential roads except cul-de-sacs	150
Residential cul-de-sacs	100



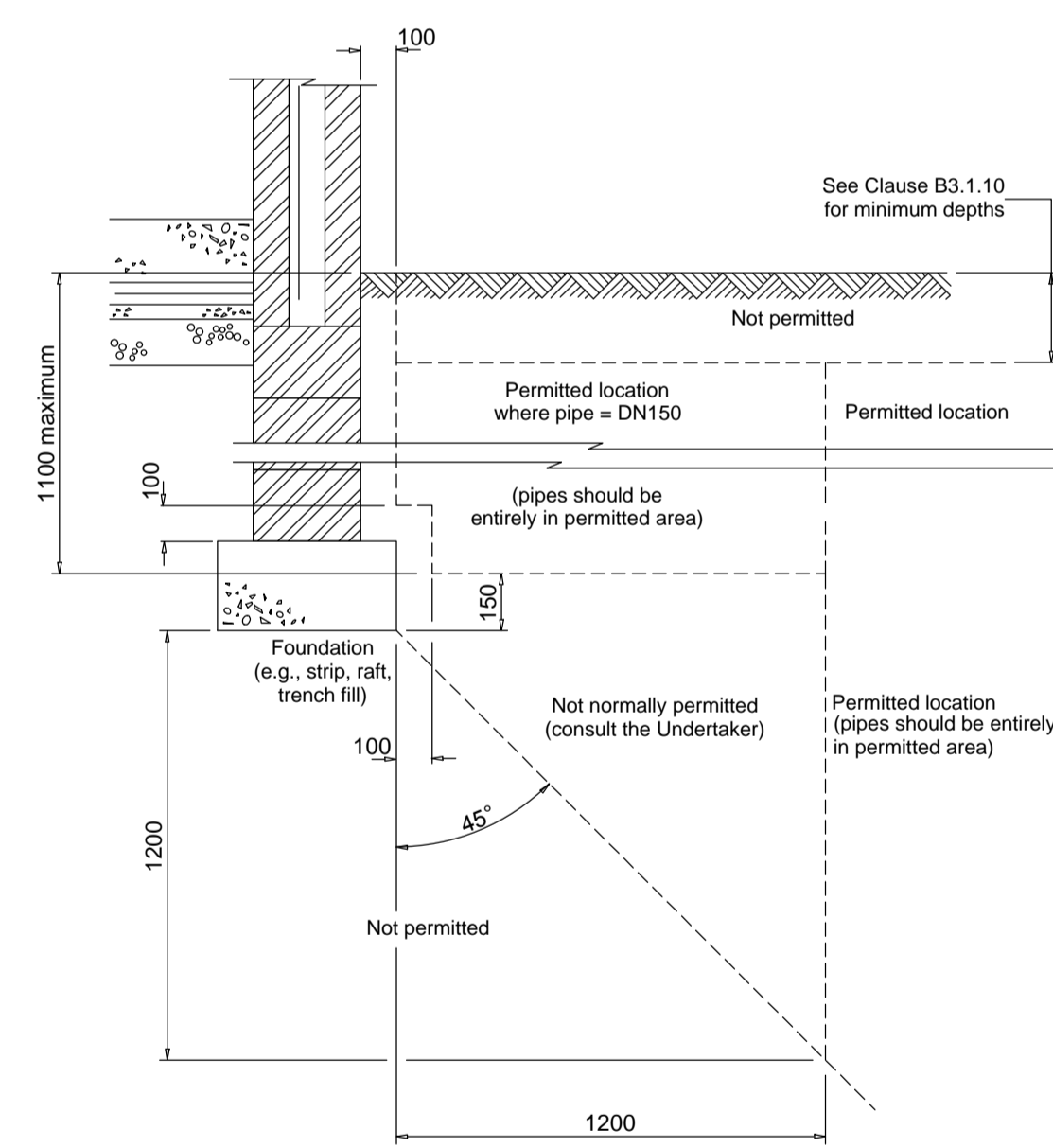
Rigid pipes built into manhole should have a flexible joint as close as feasible to the external face of the structure and the length of the next rocker pipe should be as shown.

Nominal diameter (mm)	Maximum effective length (m)
150 - 600	0.6
601 - 750	1.00
over 750	1.25

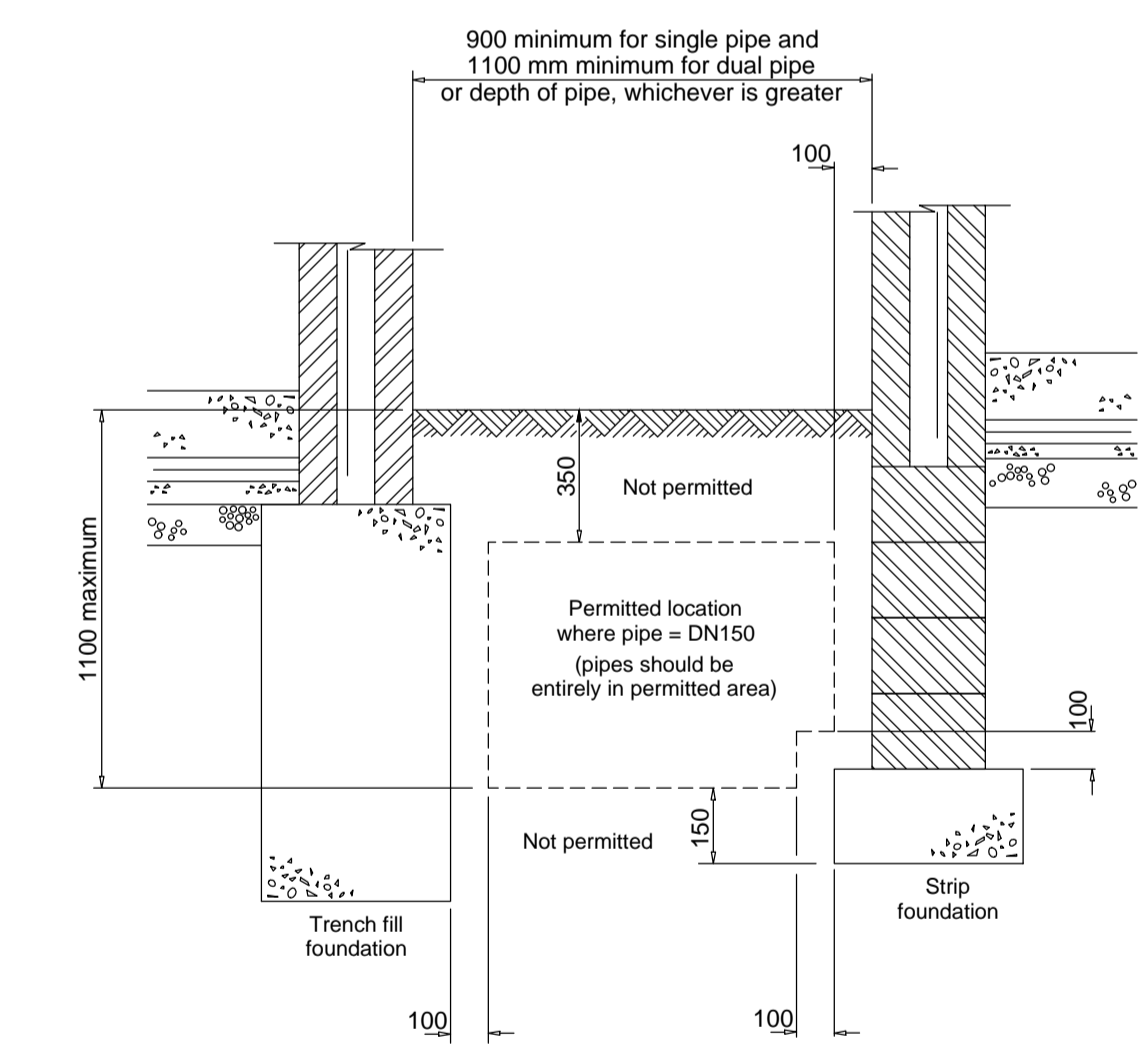
TYPICAL ARRANGEMENT OF PIPE JUNCTIONS WITHIN MANHOLES
FIGURE B.14

All pipes entering the bottom of the manhole to have soffits level.

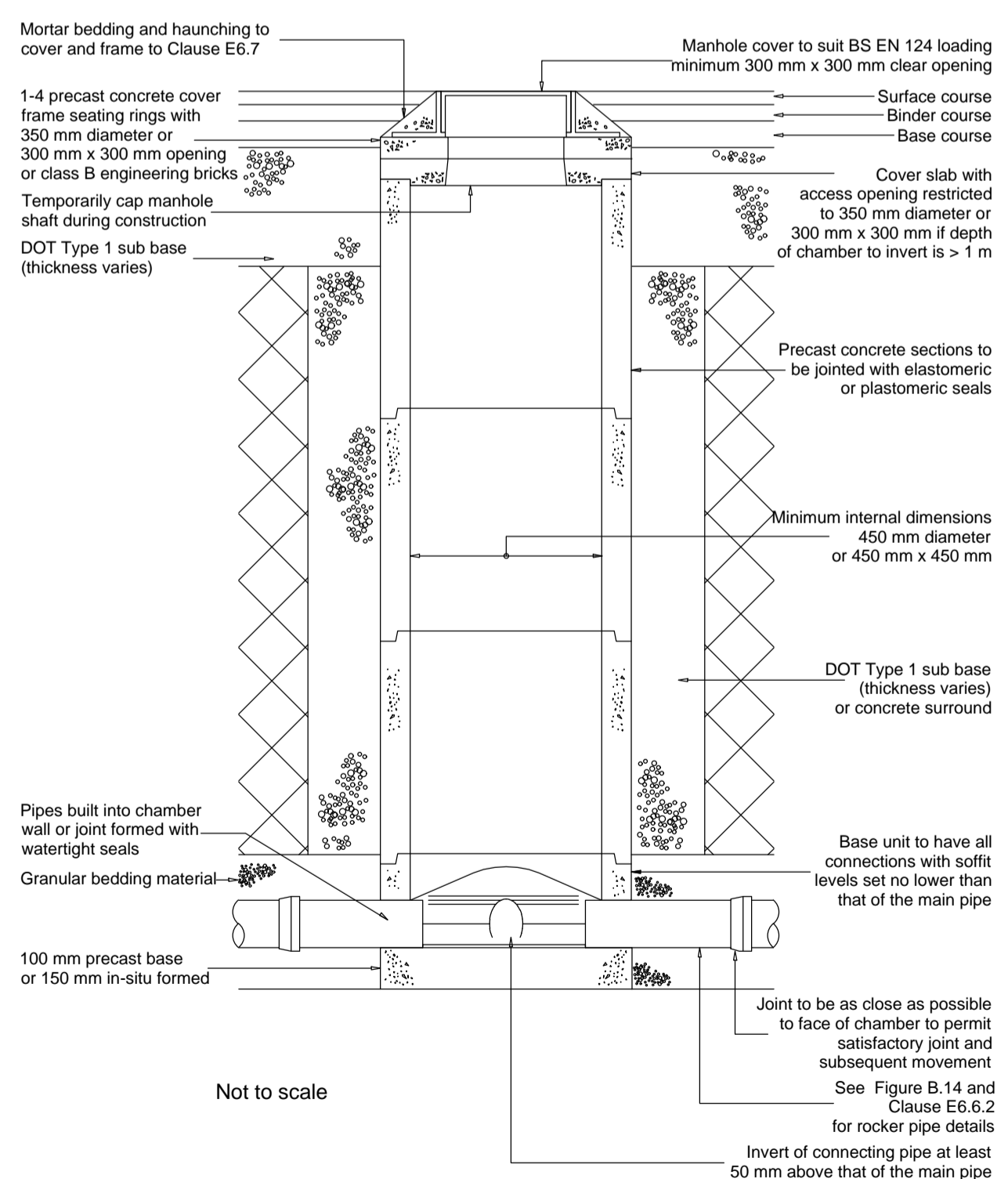
PIPE DIA	TRENCH WIDTH Tw
150	600
225	700
300	750
375	1050
450	1150
525	1200
600	1350
675	1450
750	1500
825	1600
900	1900
1050	2050
1200	2300



PERMITTED LOCATION OF SEWERS AND LATERAL DRAINS IN PROXIMITY TO BUILDINGS
FIGURE B.1



PERMITTED LOCATION OF SEWERS AND LATERAL DRAINS IN PROXIMITY TO BUILDINGS
FIGURE B.2
(where Figure B.1 is not applicable only)



TYPICAL INSPECTION CHAMBER DETAIL - TYPE 3 (Rigid material detail)
FIGURE B.18

Maximum depth from cover level to soffit of pipe in areas subject to vehicle loading 3 m, non-entry

GENERAL NOTES:

- This drawing to be read in conjunction with all other engineering details.
- All Section 104 work shall be in accordance with the document 'Sewers for Adoption' 7th Edition or as stipulated in Thames Water's Addendum.
- All adoptable works to be checked by the Water Authority inspector.

PRELIMINARY - FOR APPROVAL

REV. No.	DATE	DESCRIPTION	INITIALS
Client	CREST NICHOLSON		
Project	Bodicote, Banbury		
Title	Adoptable Drainage Construction Details (sheet 1)	Scale: NTS @A1 Checked: AMc	Date: May 2018 Drawn: AJW
Drawing No.	5692:P20	Rev	-

MJA CONSULTING
CIVIL AND STRUCTURAL ENGINEERS
Monarch House, Barton Lane,
Abingdon, Oxon, OX14 3NB
Tel: 01235 555173
Fax: 01235 523226