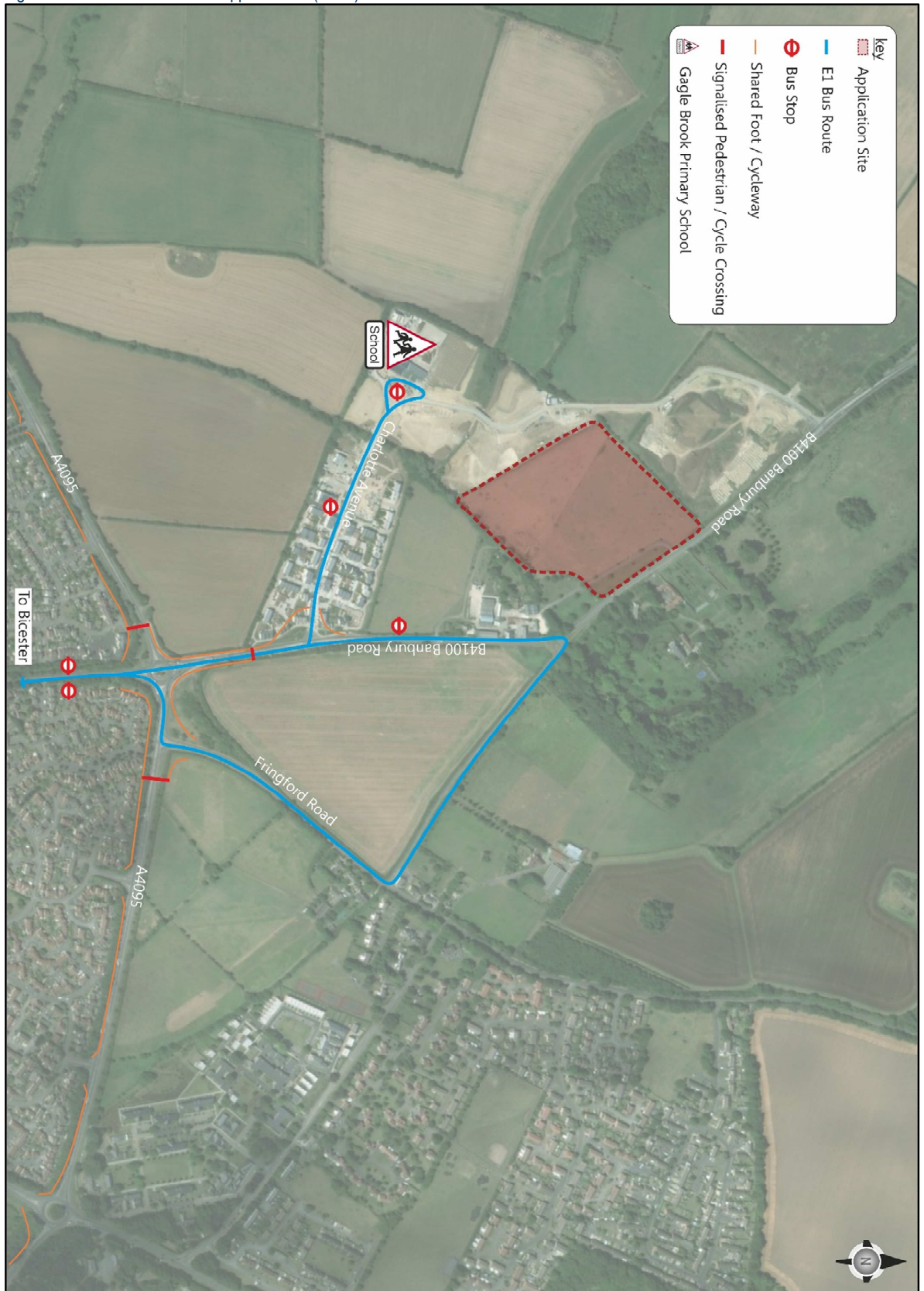


Figure 3.1: Sustainable Access Opportunities (Local)





**Plot SGR1**  
**Residential Travel Plan**  
**Section 2 of 3**

On behalf of **SGR (Bicester 1) Ltd**

Project Ref: 41436/5502 | Rev: V1.2 | Date: March 2018

---

Office Address: First Floor, Southern House, 1 Cambridge Terrace, Oxford OX1 1RR  
T: +44 (0)186 541 0000 E: oxford@peterbrett.com

