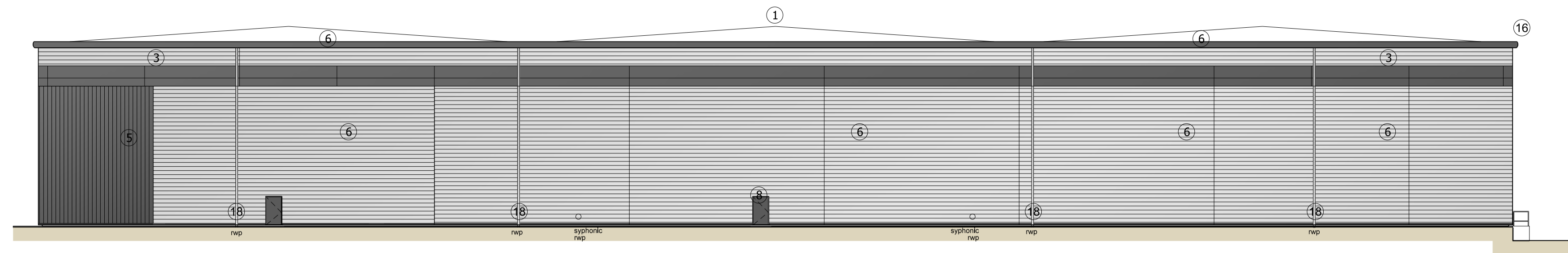


Subject to Statutory Approvals.

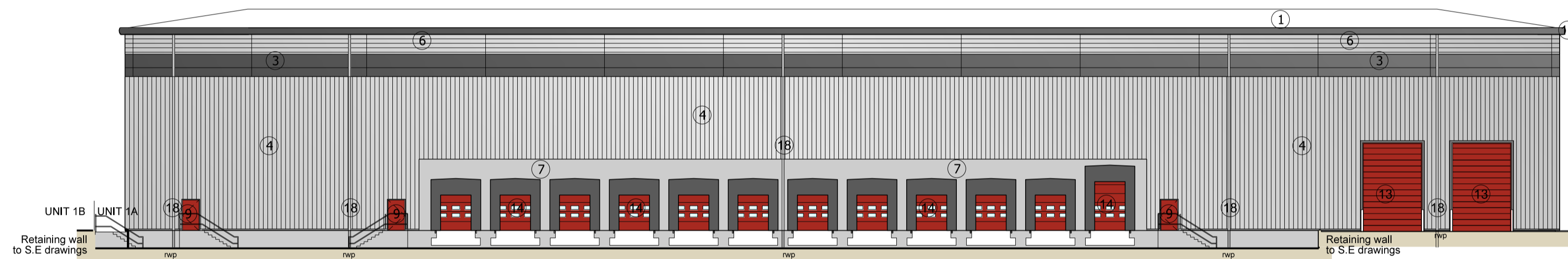
Subject to design development



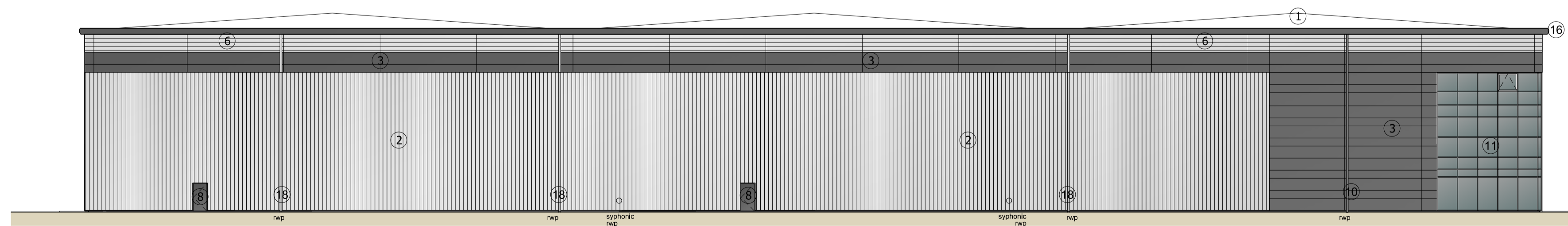
01 SOUTH-WEST ELEVATION
UNIT 1A



02 NORTH-WEST ELEVATION
UNIT 1A



03 SOUTH-EAST ELEVATION
UNIT 1A



04 NORTH-EAST ELEVATION
UNIT 1A

KEY	
1	Built up metal roof system. Colour: Gooswing Grey
2	Vertical half-round built-up cladding system - Corus Colorcoat Prisma - Sirius
3	Micro-lined Trimoterm facade profile system Colorcoat Prisma - Zeus
4	Vertical trapezoidal built-up cladding system - Corus Colorcoat Prisma - Sirius
5	Vertical half-round built-up cladding system - Corus Colorcoat Prisma - Zeus
6	Horizontal trapezoidal built-up cladding system - Corus Colorcoat Prisma - Sirius
7	Precast concrete sandwich wall panel
8	Steel fire escape door, colour RAL 7016
9	Steel fire escape door, colour RAL 3000
10	Rainwater pipe, colour RAL 7016
11	PPC Aluminium double glazed curtain walling, colour RAL 7016
12	PPC Aluminium double glazed windows, colour RAL 7016
13	Loading door, colour RAL 3000
14	Dock level loading doors, colour RAL 3000 incorporating standard dock shelter
15	Proposed signage zone
16	Eaves and verge flashings, colour RAL 7016
17	Louvres - colour to match cladding (to M&E consultant specification)
18	Rainwater pipe, colour RAL 9006
L	Look-a-like panels - obscured glass

Rev	Description	Chkd	Date
A	Glazing, entrance doors, escape stairs to the service yard and rwp colours updated	CG	30.11.18

Peer House
8 -14 Verulam Street
London WC1X 8LZ

tel +44(0)20 7400 2120

enquiries@cornisharchitects.com
www.cornisharchitects.com

cornisharchitects

Project
**LINK 9 - SKIMMINGDISH LANE
BICESTER
PLOT 1**

Drwg Title
UNIT 1A ELEVATIONS

Status
PLANNING

0 12.5 m

Scale
1:250 @ A1

Date
29/03/2018

Drwg No
17007 / TP / 1009

Rev
A