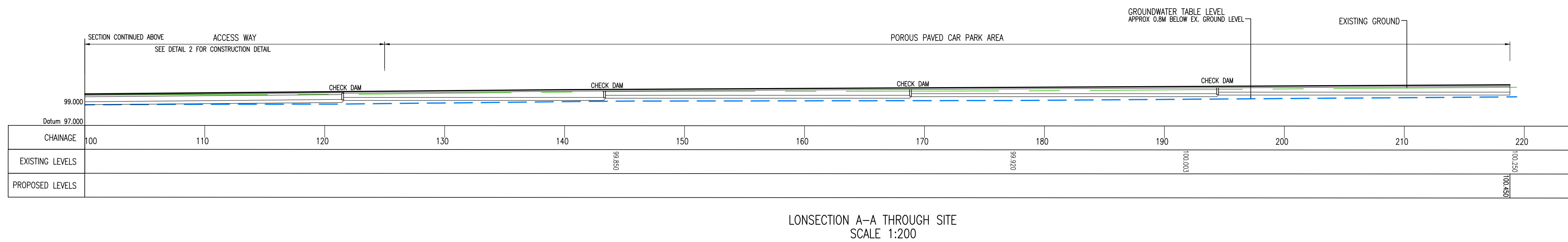
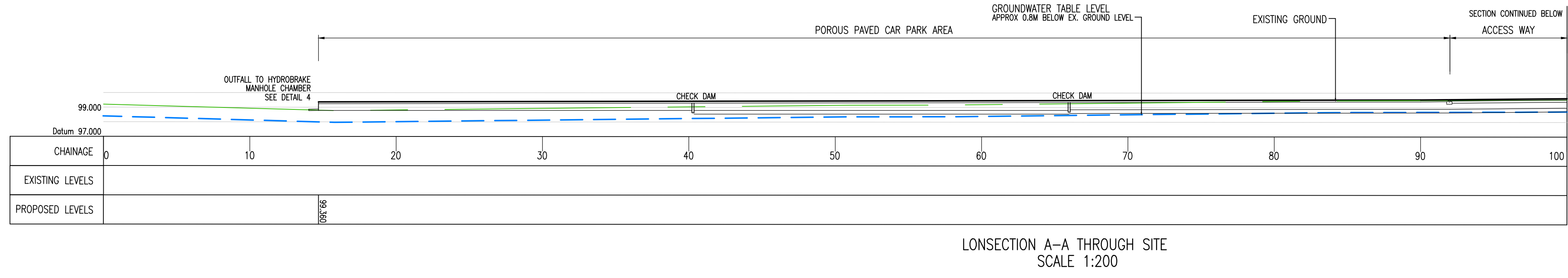
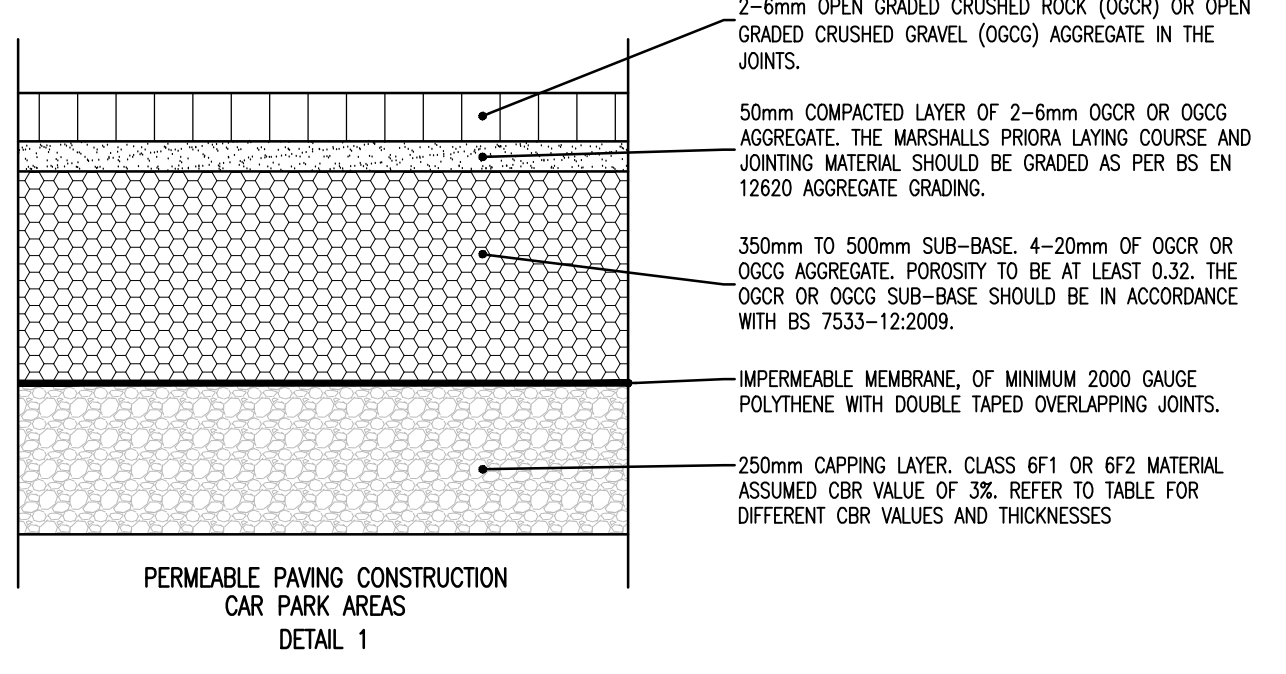
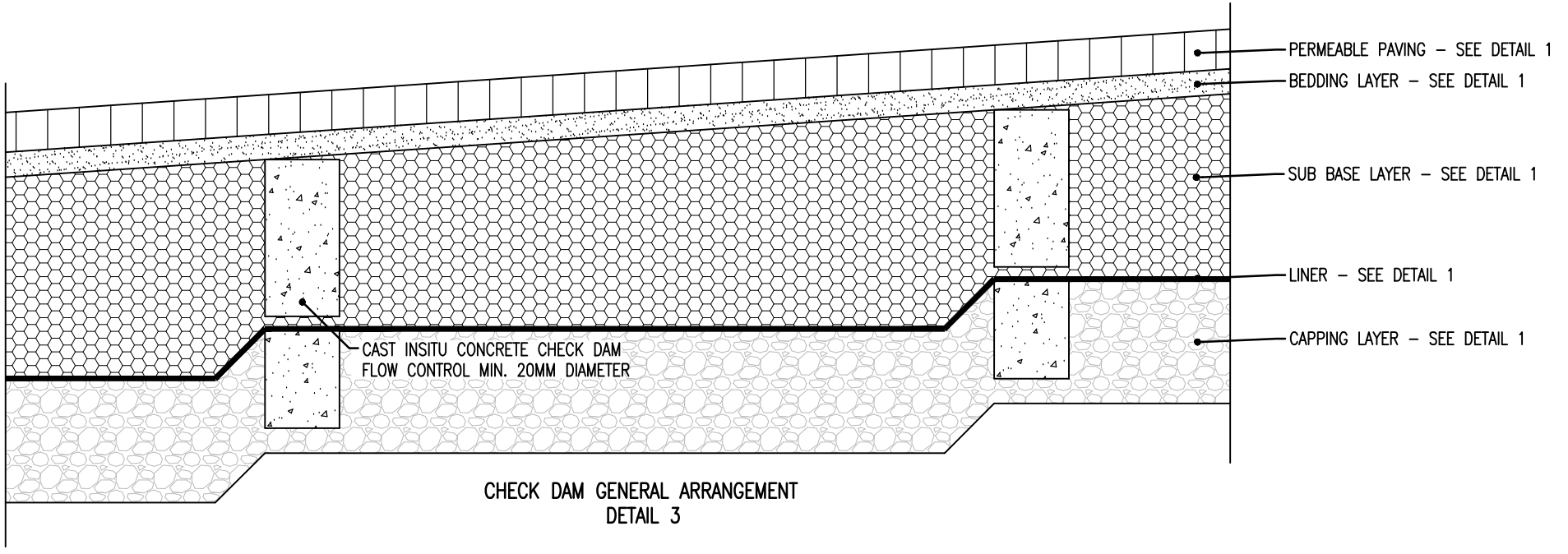
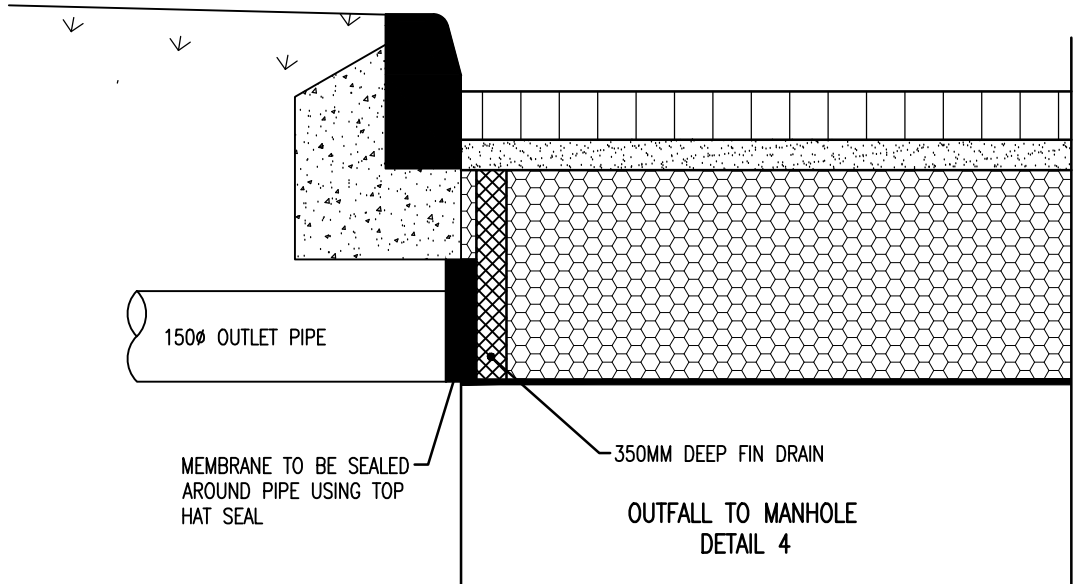


CAPPING LAYER THICKNESS	
CBR	6F1 LAYER THICKNESS BELOW SUB-BASE
≤ 2.5%	600mm / REFER TO ENGINEER
3%	250mm
4%	250mm
5%	250mm
> 5%	200mm

IN AREAS OF VERY SOFT SUBGRADE THE CAPPING LAYER THICKNESS SHALL BE INCREASED TO 600MM AND A GEOTEXTILE SUCH AS TERRAM INCORPORATED BENEATH THE CAPPING LAYER. ALL MATERIAL WITHIN 450MM OF THE FINISHED LEVELS TO BE NON FROST-SUSCEPTIBLE.



DO NOT SCALE

- NOTES
- ALL DIMENSIONS SHOWN ARE IN METRES UNLESS OTHERWISE STATED.
 - ALL LEVELS ARE IN METRES ABOVE ORDNANCE DATUM.
 - THIS DRAWING IS BASED UPON TURKINGTON MARTIN'S LANDSCAPE MASTERPLAN TM36L01 AND TOPOGRAPHICAL SURVEY BY TARGET SURVEYS LIMITED REFERENCE 1206/1 DATED APRIL 2015.
 - THIS DRAWING IS TO BE READ IN CONJUNCTION WITH THE DRAINAGE STRATEGY DRAWING 3775-WSP-00-ZZ-DR-CE-1002

P01	15/12/2017	MLH	FIRST ISSUE	AJG	MB
REV	DATE	BY	DESCRIPTION	CHK	APP

DRAWING STATUS: S2 - FOR INFORMATION

wsp

Unit 9 The Chase, John Tate Road, Foxholes Business Park, Hertford, SG13 7NN, UK
T+ 44 (0) 1992 526 000, F+ 44 (0) 1992 526 001
wsp.com

CLIENT: ATLAS HOTELS GROUP

ARCHITECT: NORR

SITE/PROJECT: HOLIDAY INN EXPRESS BICESTER GATEWAY

TITLE: PAVEMENT AND DRAINAGE SECTION AND DETAILS

SCALE @ A1: 1:500	CHECKED: AJG	APPROVED: MB
PROJECT NO: 70033775	DESIGNED: MM	DRAWN: MM
DATE: December 17		REV:

DRAWING No: 3775-WSP-00-ZZ-DR-CE-1004

© WSP UK Ltd