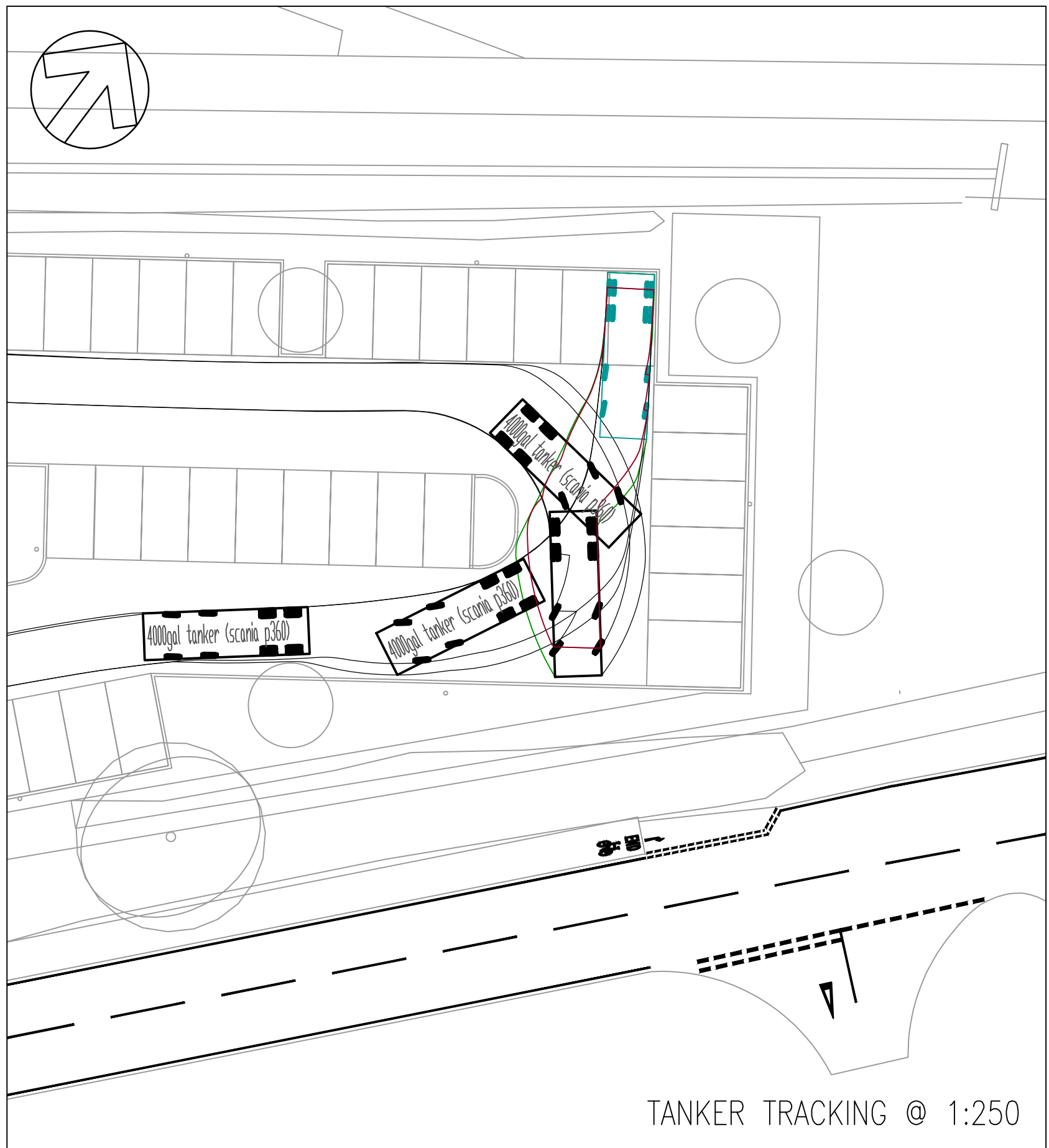
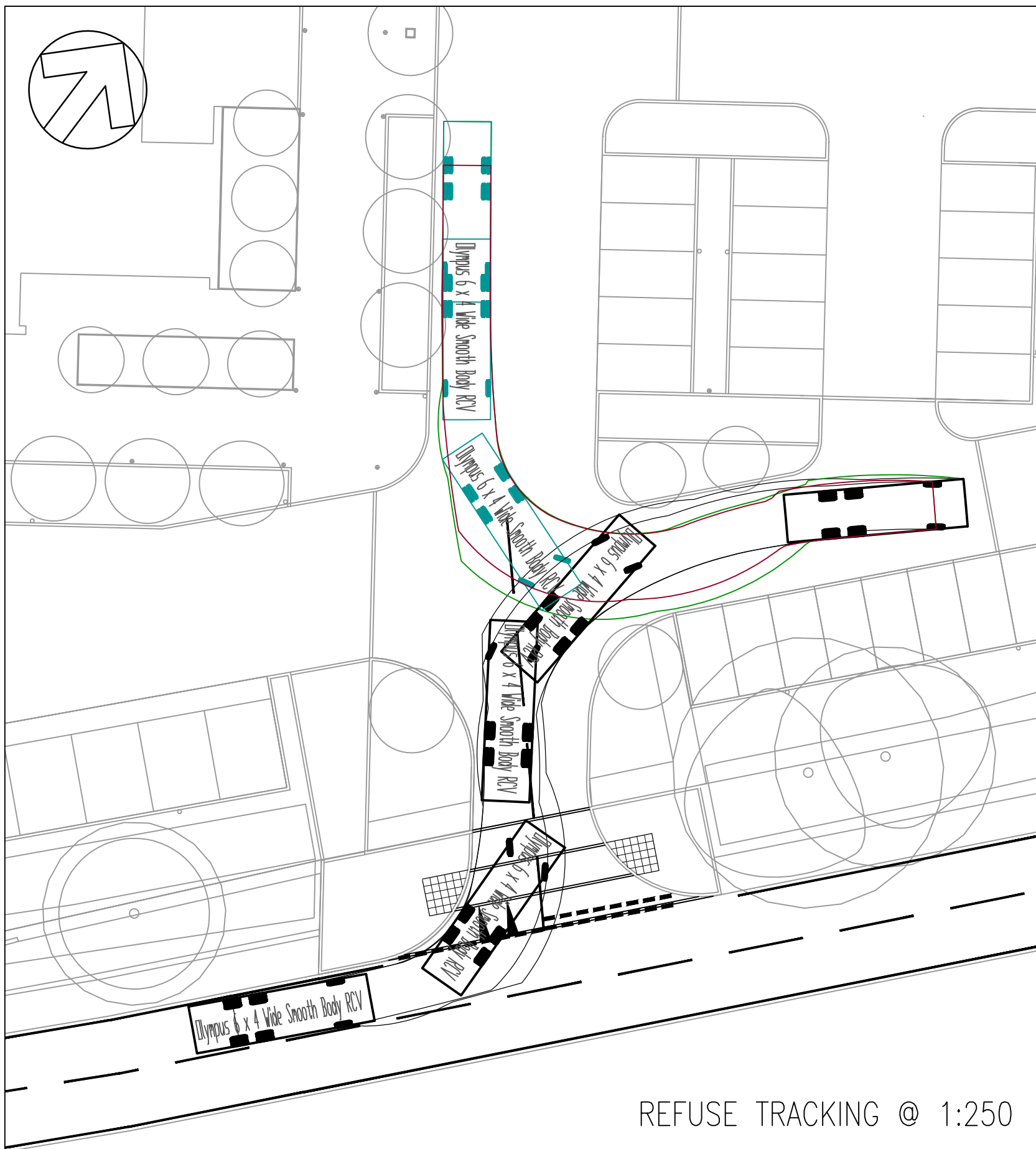
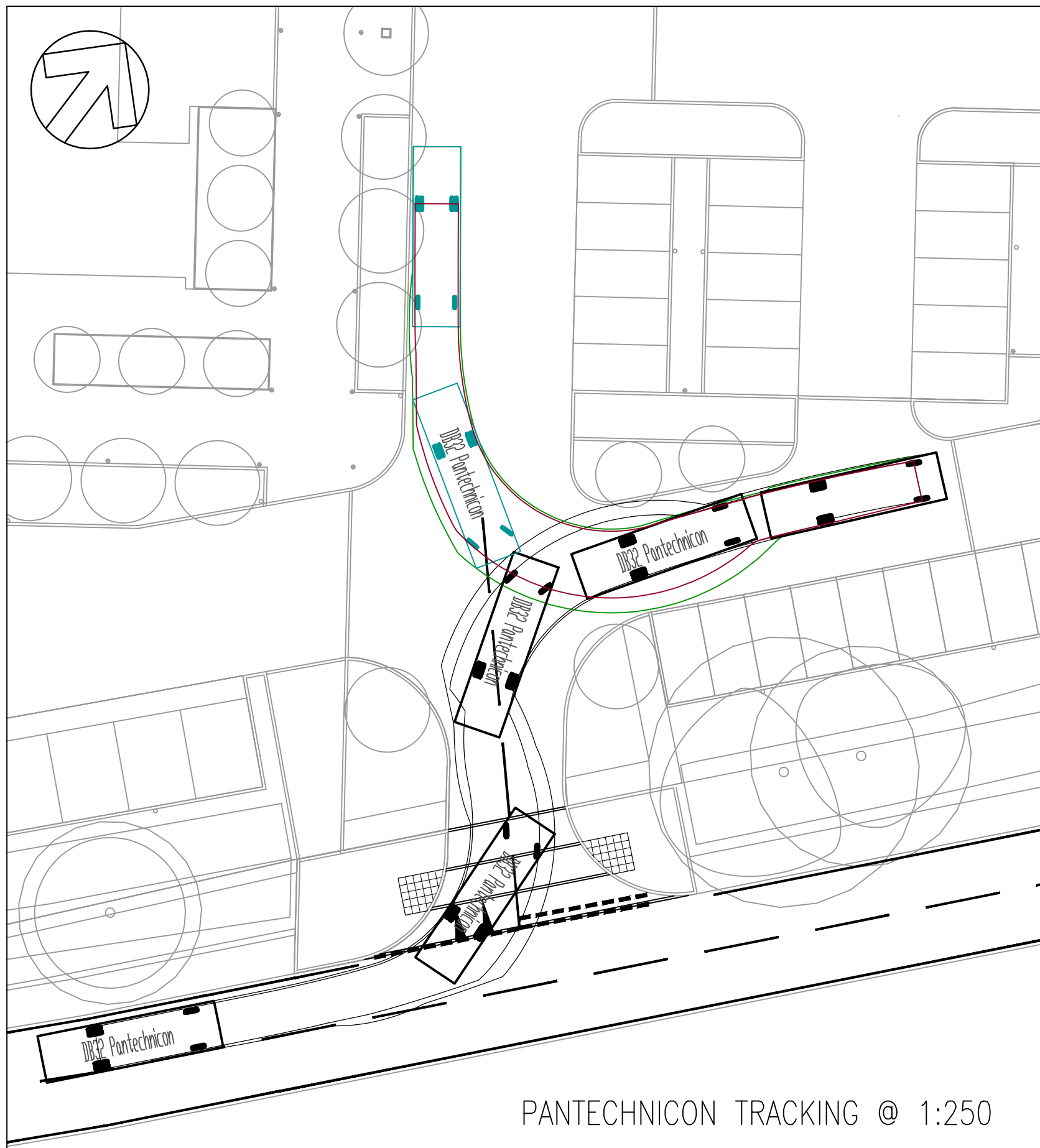
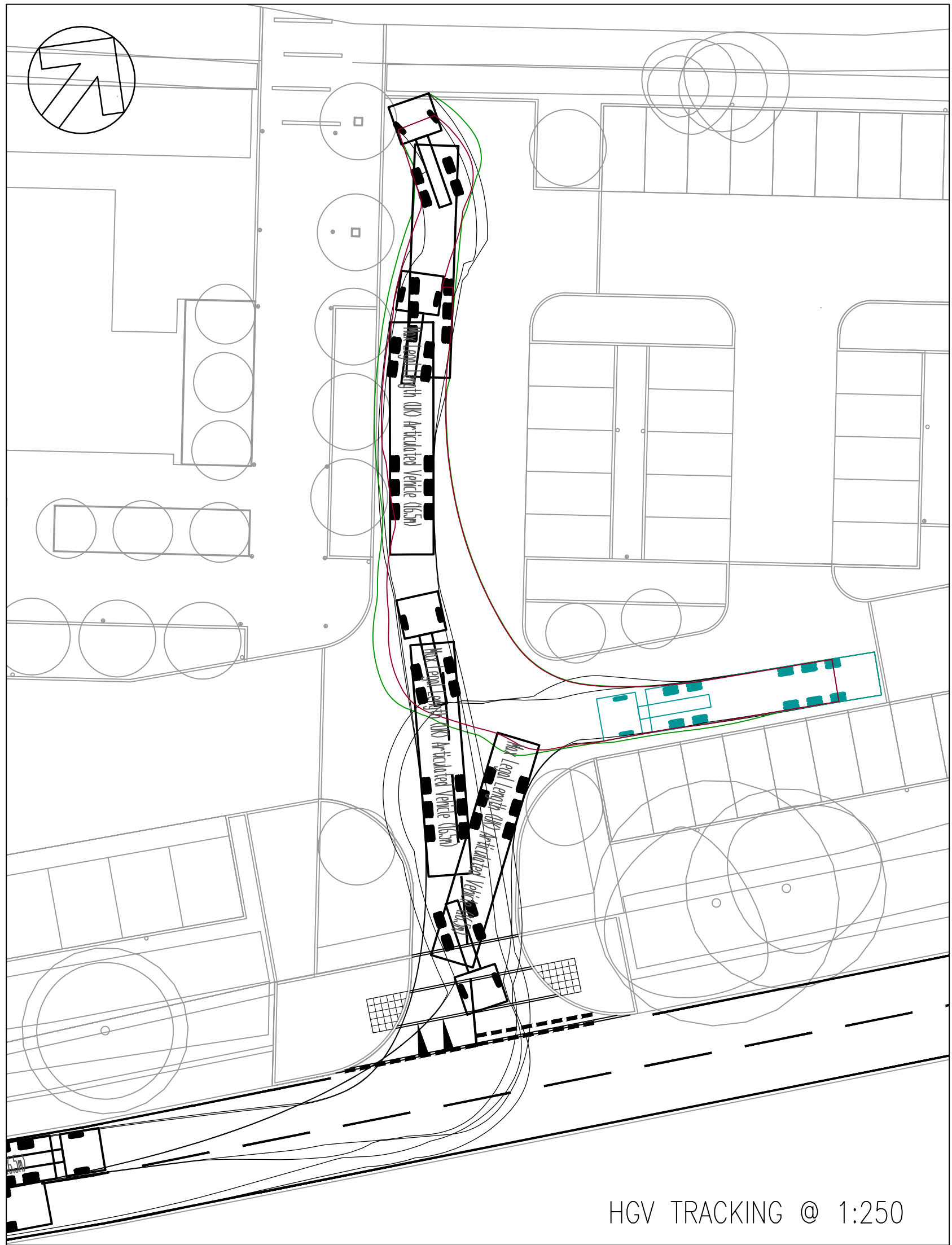
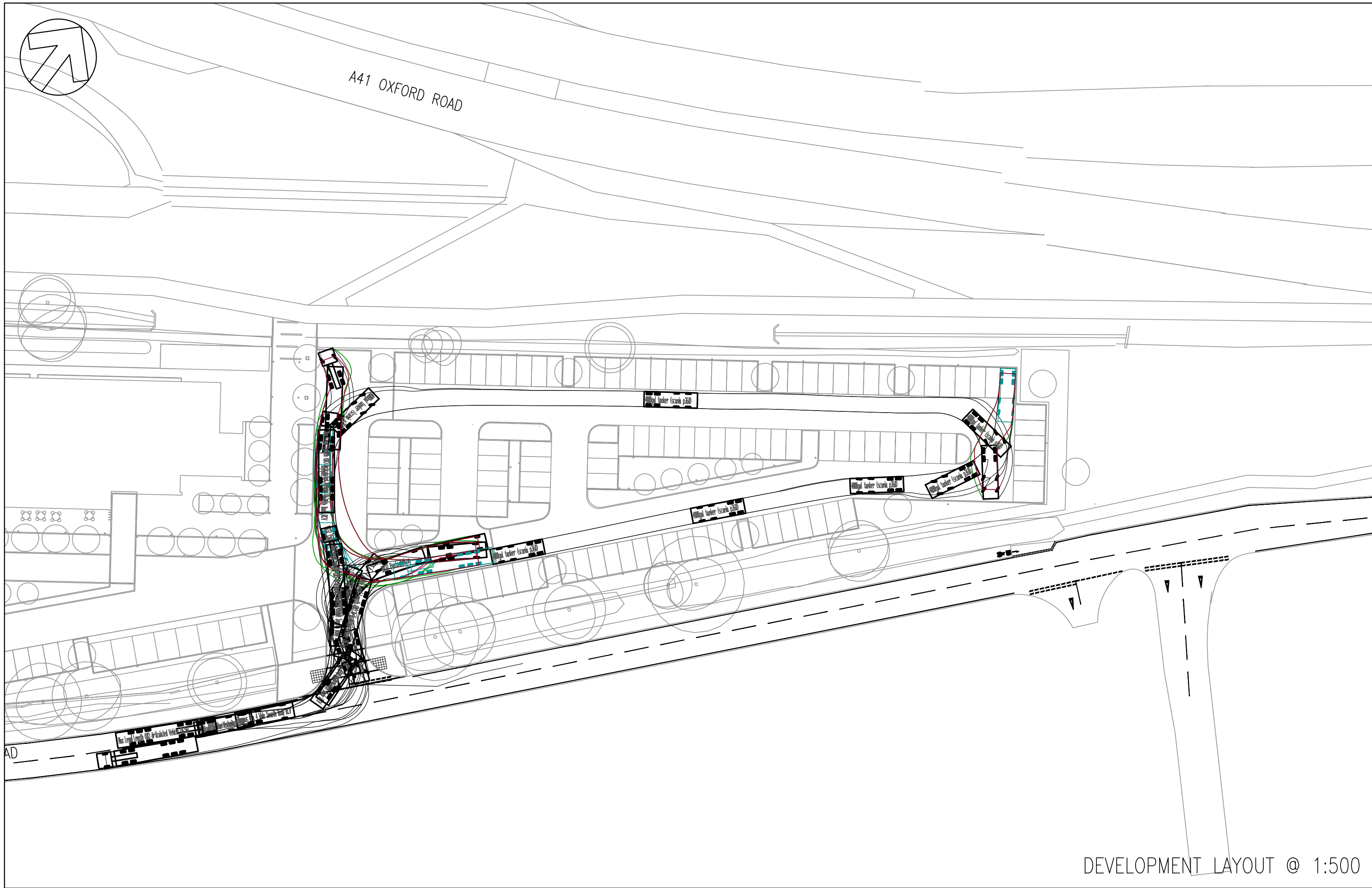


File name: I:\UK\WSPGROUP\CONCENTRAL DATA\PROJECTS\70033775\70033775-00-ZZ-DR-CE-1001.DWG, printed on 13 February 2018 14:58:46 by Wills, Karl



NOTES

1. ALL DIMENSIONS SHOWN ARE IN METRES UNLESS OTHERWISE STATED.

2. ALL LEVELS ARE IN METRES AT 34.0m ABOVE ORDANCE DATUM.

3. THIS DRAWING IS BASED ON:

TURKINGTON MARTIN'S LANDSCAPE MASTERPLAN TM336L01

TOPOGRAPHICAL SURVEY BY TARGET SURVEYS LIMITED REFERENCE 1206/1 DATED APRIL 2015

KEY - VEHICLE PROFILES:

9.57

1.28

5.24

DB32 Pantechnicon

Overall Length 9.570m

Overall Width 2.520m

Overall Body Height 4.571m

Min Body Ground Clearance 0.363m

Max Track Width 2.300m

Lock to Lock Time 6.00s

Kerb to Kerb Turning Radius 10.450m

9.59

1.665

4.215

1.385

Olympus 6 x 4 Wide Smooth Body RCV

Overall Length 9.590m

Overall Width 2.530m

Overall Body Height 3.450m

Min Body Ground Clearance 0.250m

Track Width 2.530m

Lock to Lock Time 4.00s

Wall to Wall Turning Radius 10.000m

8.77

1.51

1.84

3.16

1.35

4000gal tanker (scania p360)

Overall Length 8.770m

Overall Width 2.490m

Overall Body Height 2.435m

Min Body Ground Clearance 0.601m

Track Width 2.490m

Lock to Lock Time 4.00s

Kerb to Kerb Turning Radius 10.700m

6.53

13.6

1.37

4.78

3

6.4

1.4

1.4

2.52

Max Legal Length (UK) Articulated Vehicle (16.5m)

Overall Length 16.500m

Overall Width 2.550m

Overall Body Height 3.681m

Min Body Ground Clearance 0.411m

Max Track Width 2.500m

Lock-to-lock time 6.00s

Curb to Curb Turning Radius 6.530m

|     |            |    |   |     |     |
|-----|------------|----|---|-----|-----|
| P03 | 13/02/2018 | KW | HGV TRACKING ADDED  | MB  | NS  |
| P02 | 01/02/2018 | MM | NOTES 2 REVISED. TANKER TRACKING UPDATED FOR REVISED PUMPING STATION LOCATION. ROAD MARKINGS ADDED. | AJG | NS  |
| P01 | 15/12/2017 | MM | FIRST ISSUE   | AJG | NS  |
| REV | DATE       | BY | DESCRIPTION   | CHK | APP |

DRAWING STATUS:

S2 - FOR INFORMATION

WSP

Unit 9 The Chase, John Tate Road, Foxholes Business Park, Hertford, SG13 7NN, UK  
T+ 44 (0) 1992 526 000, F+ 44 (0) 1992 526 001  
wsp.com

CLIENT:

ATLAS HOTELS GROUP

ARCHITECT:

NORR

SITE/PROJECT:

HOLIDAY INN EXPRESS  
BICESTER GATEWAY

TITLE:

VEHICULAR TRACKING

|                           |             |           |
|---------------------------|-------------|-----------|
| SCALE @ A1:               | CHECKED:    | APPROVED: |
| As Shown                  | AJG         | MB        |
| PROJECT NO:               | DESIGNED:   | DRAWN:    |
| 70033775                  | MM          | MM        |
| DRAWING No:               | DATE:       | REV:      |
| 3775-WSP-00-ZZ-DR-CE-1001 | February 18 | P03       |

© WSP UK Ltd