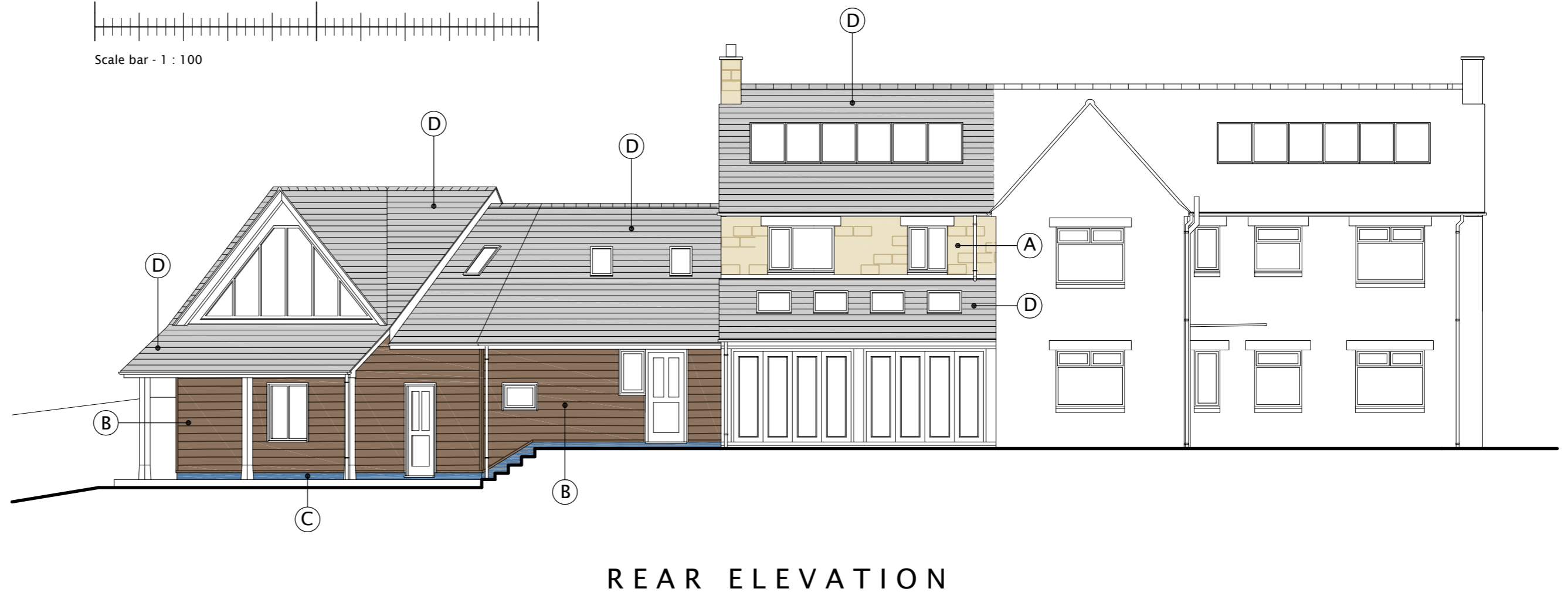
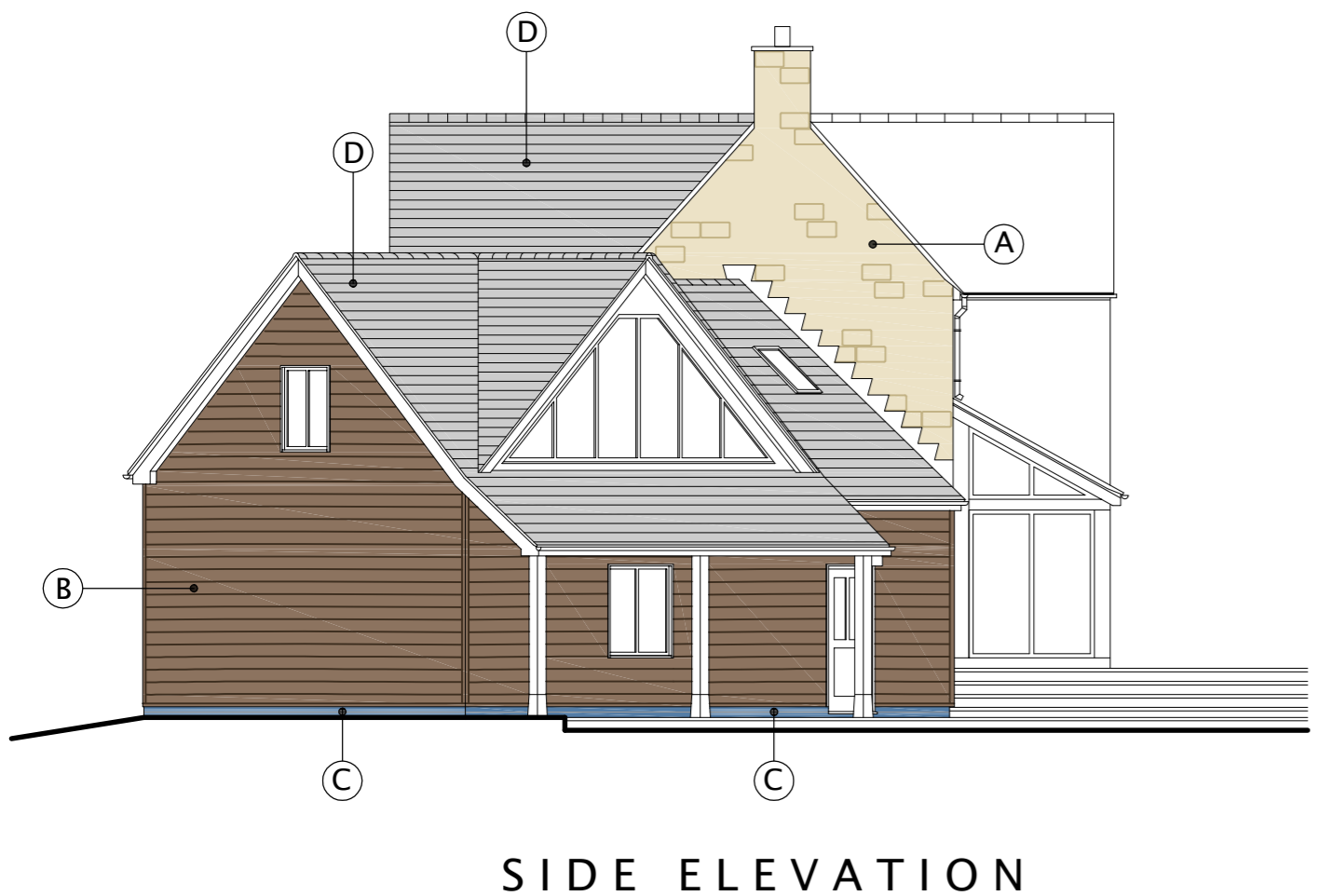
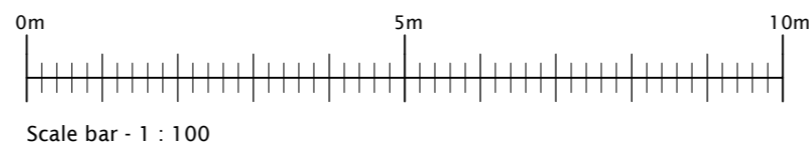
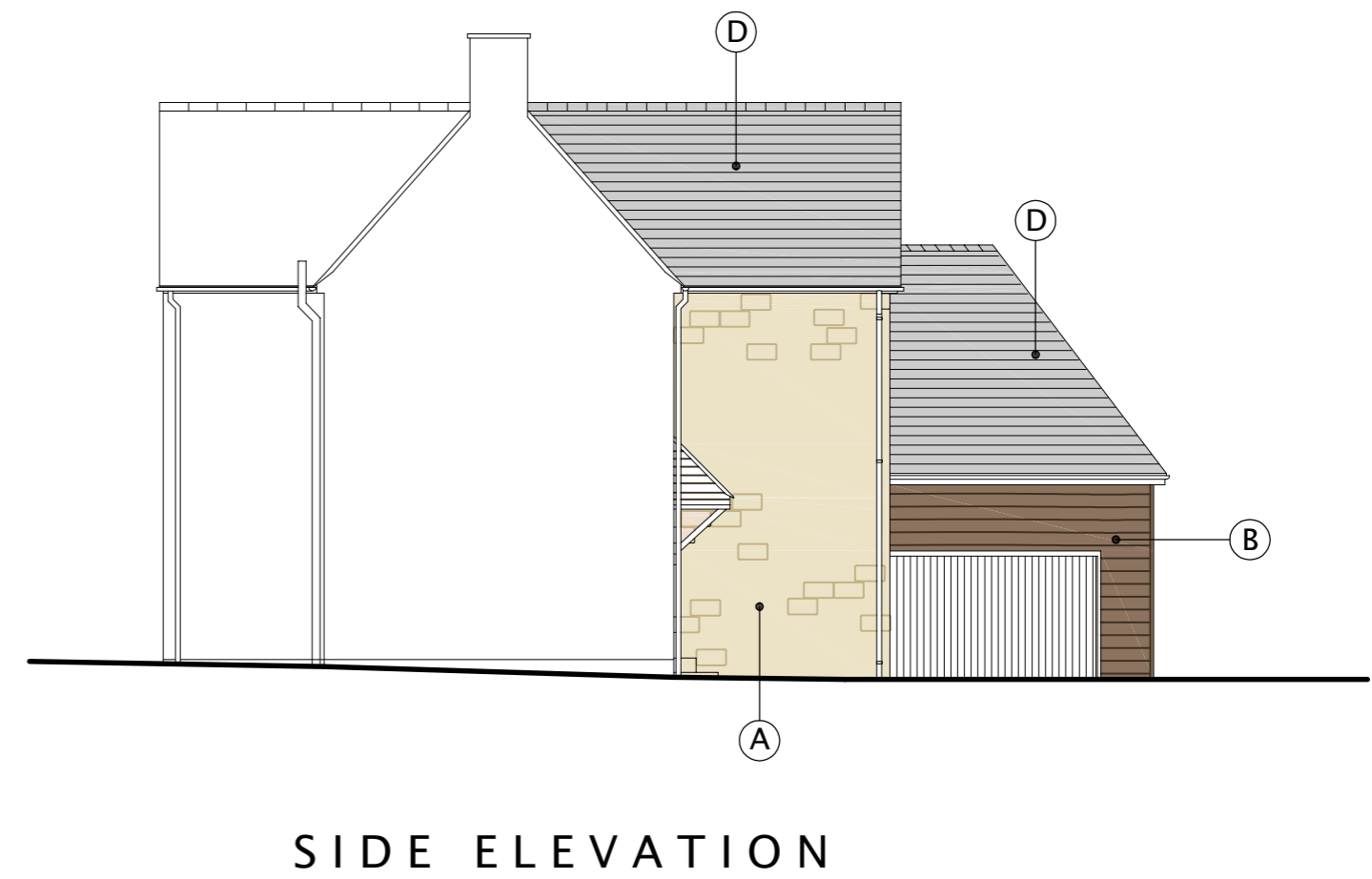
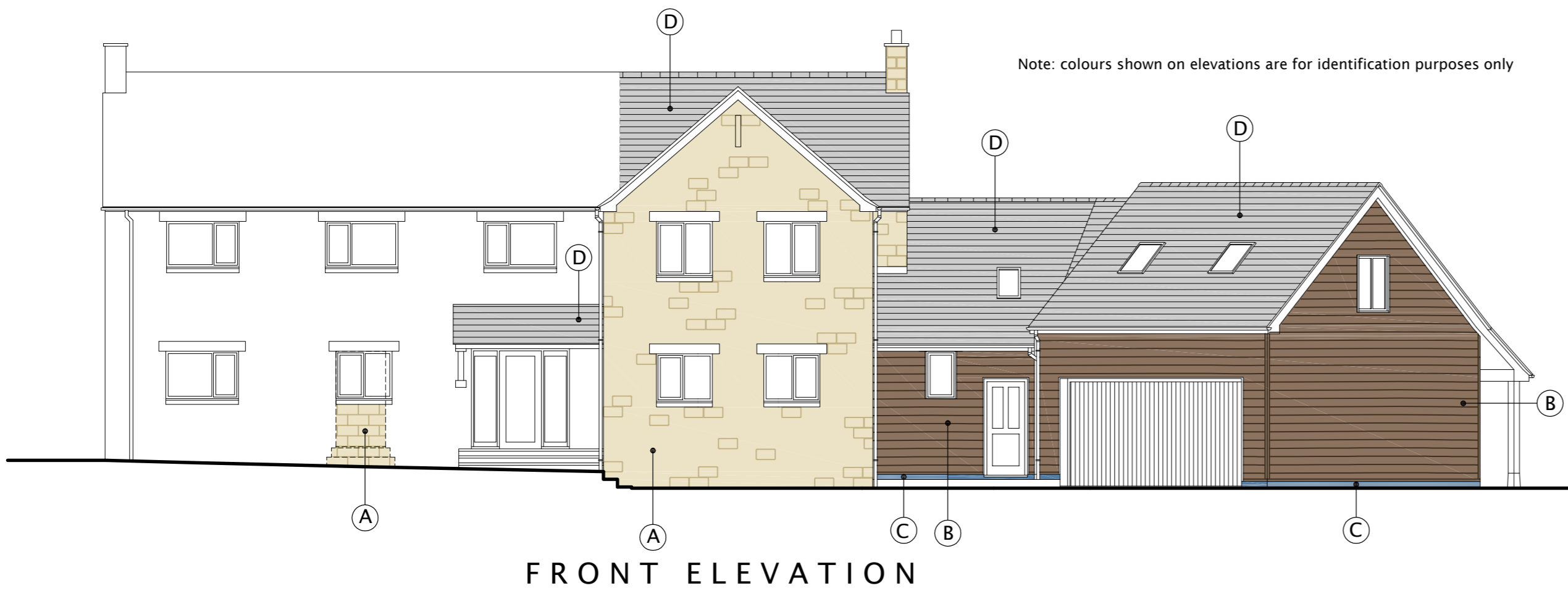


Note: colours shown on elevations are for identification purposes only



## SCHEDULE OF MATERIALS

### (A) SALVAGED CONCRETE BLOCKWORK

Concrete blocks salvaged from the demolition of the garage etc. will be used to ensure that the extension matches the existing house.



Image of existing concrete blocks

### (B) TIMBER CLADDING

Horizontal feather edge timber boarding with a fine sawn finish and treated with a colour wash/stain in rich dark brown/black peat. Boards to be 175mm (min. 135mm visible) x 24mm (thick edge) / 6mm (thin edge) or similar



Image of the timber cladding

### (C) FACING BRICK TO PLINTH WALLS

65mm blue engineering brick with smooth face and dark grey joints



Image of blue engineering brick

### (D) PLAIN TILES TO NEW ROOF SLOPES

Concrete plain tiles (Marley, Redland or similar manufacturer) in antique grey/brown colour with granular finish to closely match the existing plain tiles



Image of existing roof tiles to be matched

© 2018 Cleford Essex Associates Ltd. All rights reserved.

### Cleford Essex Associates

45 North Bar, Banbury, Oxon. OX16 0TH.  
Telephone 01295 257556 Fax 01295 268500.

Project Faraday House,  
Woodway Road, Sibford Ferris,  
Oxfordshire.

Drawing SCHEDULE OF MATERIALS  
Walls & Roofs.

Scale 1 : 100

Date February 2018

Sheet Size A2

**DRAWING No.** 1650 - PC - 02