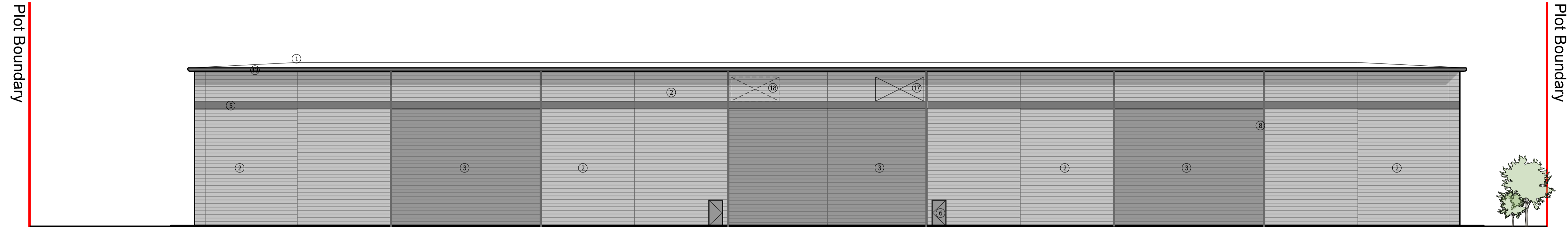


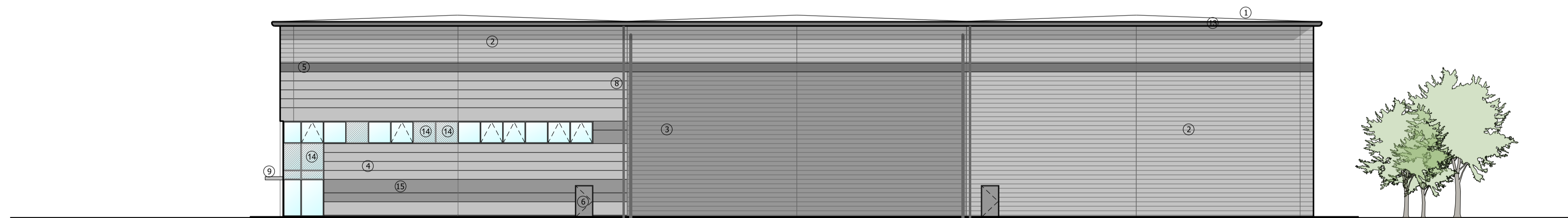
- ① Metal standing seam roof
- ② Horizontal bull-up cladding system - Corus Colorcoat Prisma - Sifius
- ③ Horizontal bull-up cladding system - Corus Colorcoat Prisma - Orion
- ④ Microrib composite cladding system - Corus Colorcoat Prisma - Sifius
- ⑤ Microrib composite cladding feature band - Corus Colorcoat Prisma - Zeus
- ⑥ Steel fire escape door, colour RAL 7016
- ⑦ Loading door, colour RAL 7016
- ⑧ Rainwater pipe, colour Sirius
- ⑨ Main entrance canopy 1.5m projection, painted steel frame
- ⑩ PPC Aluminium double glazed curtain walling, colour RAL 7016
- ⑪ PPC Aluminium double glazed windows, colour RAL 7016
- ⑫ Dock level loading doors, colour RAL 7016 incorporating standard dock shelter
- ⑬ Eaves and verge flashings, colour Zeus
- ⑭ Look-a-like panels - obscured glass
- ⑮ Microrib composite cladding system - Corus Colorcoat Prisma - Orion
- ⑯ Weather louvres - colour to match cladding (to M&E consultant specification)
- ⑰ Fresh air louvres - colour to match cladding (to M&E consultant specification)
- ⑱ Fresh air louvres - blanked for future connection - colour to match cladding (to M&E consultant specification)

Subject to Statutory Approvals.

All dimensions to be checked on site prior to commencement of work.



01 REAR ELEVATION  
Block 3



02 SIDE ELEVATION  
Unit 3A

B	Planning Issue	AS	09.06.17
A	Louvres, look-a-like windows added, RWP positions amended	AS	07.06.17
Rev	Description	Chkd	Date

Peer House  
8 -14 Verulam Street  
London WC1X 8LZ  
tel +44(0)20 7400 2120  
enquiries@cornisharchitects.com  
www.cornisharchitects.com

cornisharchitects

Project	LINK 9 BICESTER		
Dwg Title	Elevations 02 As Proposed		
Status	PLANNING		
Scale	1:200 @ A1	Date	22/05/2017
Dwg No	17007 / TP / 008	Rev	B