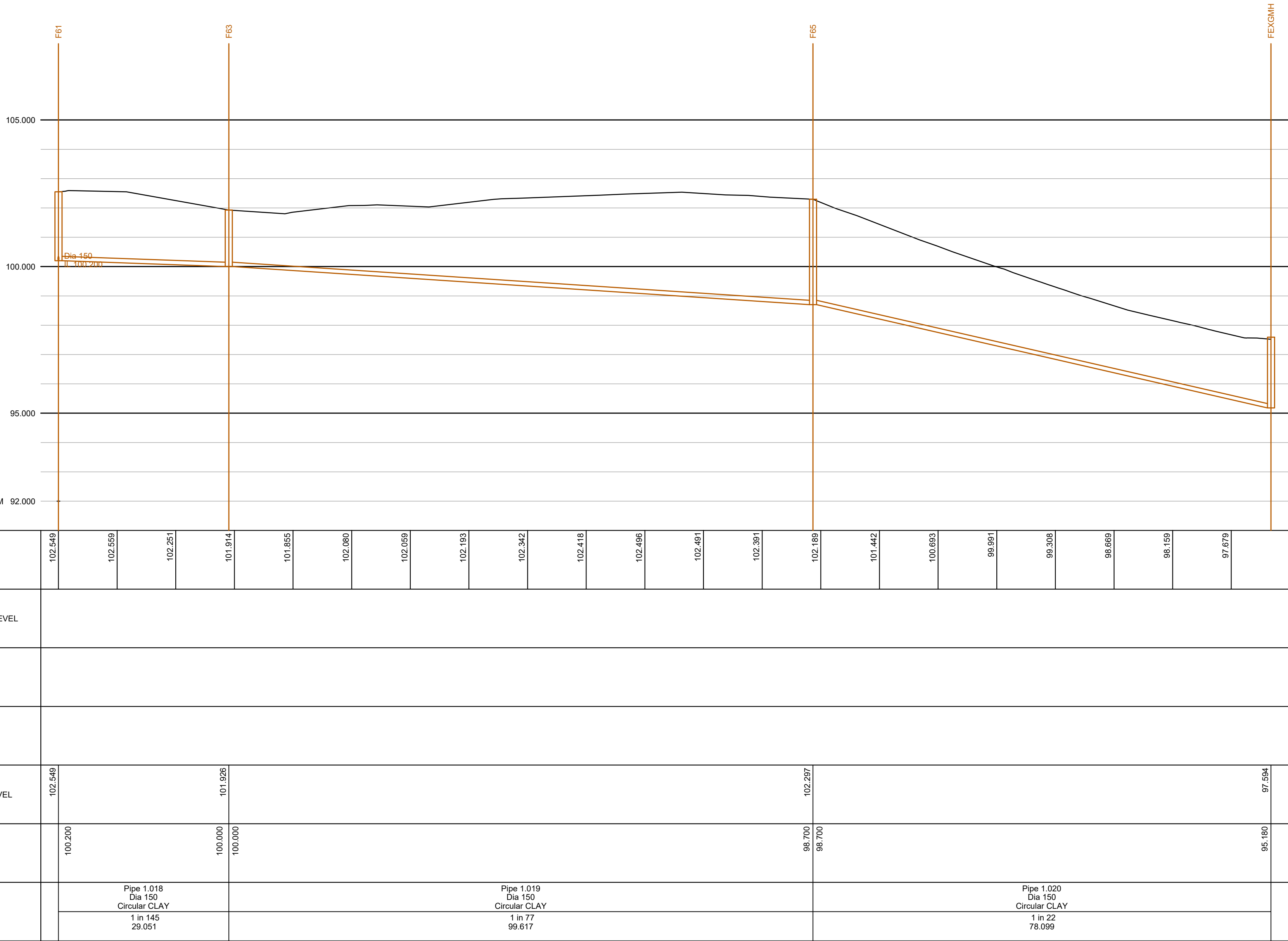


ROAD4

CHAINAGE	0.000	1.833	2.722	4.237	8.488	11.300	13.938	17.597	20.000	23.543	29.981	30.000	33.914	36.685	40.000	46.000	50.000	54.935	57.379	60.000	61.842	65.000	70.507	73.397	74.411	79.823	82.328	84.771
EXISTING GROUND LEVEL	112.955				112.626						112.558				112.520		112.472						111.858			111.487	111.408	
ALIGNMENT LEVEL	113.099			112.962	112.825		112.848	112.827	112.828	112.848		112.913	112.913	112.944	112.944	112.938	112.895	112.814	112.698	112.631	112.558		112.403	112.231	112.144		111.853	111.765
VERTICAL ALIGNMENT		G= -2.500%					KF= 4.30777		G= 1.000%					L= 24.954	KF= -6.70342		G= -2.723%			L= 14.938	KF= -13.92161				G= -3.796%			
		1: -40.0					L= 15.077		1: 100.0																	1: -26.3		
HORIZONTAL ALIGNMENT						R= 10.250			R= 196.271						R= 137.480													
STORMWATER COVER LEVEL		113.122			112.322																		112.149				111.527	111.329
STORMWATER INVERT			106.616		106.591		104.886																104.740		104.740		104.724	104.724
STORMWATER DETAILS			Pipe 1.013 Dia 525 Circular CONC 1 in 455 11.421											Pipe 1.014 Dia 2250 AquaSpira 1 in 501 63.156											Pipe 1.016 Dia 600 AquaSpira 1 in 501 8.022		1 in 495 4.950	
FOULWATER COVER LEVEL		113.165	113.036		112.940																		112.025					
FOULWATER INVERT		108.418	108.458		108.392	108.392																	107.981		107.981			
FOULWATER DETAILS		Pipe 1.012 Dia 150 Circular CONC 1 in 152 3.043	Pipe 1.013 Dia 150 Circular CLAY 1 in 150 9.893											Pipe 1.014 Dia 150 Circular CLAY 1 in 150 61.674											Pipe 1.015 Dia 150 Circular CLAY 1 in 151 12.944			

DATUM 92.000



F61 - FEXGMH

The Contractor is to check and verify in conjunction with the Architects details all setting out points, building and site dimensions, levels and sewer invert levels at connection points and ensure that they are fully conversant with the contents and requirements of the site investigation report before work starts. The Contractor is to comply in all respects with current building legislation, British Standard Specifications, Building Regulations etc. whether or not specifically stated on this drawing.

This drawing is not intended to show details of ground conditions or ground contaminants. Each area of ground relied upon to support any structure depicted (including drainage) must be investigated by the Contractor any areas of formation for said structures which do not accord with the anticipated conditions as described in the site investigation report are to be immediately notified to the Engineer, where applicable. Any suspect fluid ground or ground contaminants on or within the ground should be further investigated by a suitable expert. Any earthworks shown indicate typical slopes for guidance only and should be investigated further by a suitable geotechnical expert.

Where existing trees are shown to be retained they should be subject to a full Arboricultural inspection for safety. All trees are to be planted so as to ensure they are a minimum of 5 metres from buildings and 3 metres from drainage and services, where applicable. A foundation is to be provided to accommodate the proposed tree planting, where applicable.

© This drawing and the building works depicted are the copyright of Banners Gate Ltd and may not be reproduced or amended except by written permission. No liability will be accepted for amendments made by other persons.

GENERAL NOTES

1. This drawing is to be read in conjunction with relevant architectural and engineering drawings.
2. Levels indicated in blocks are Finished floor levels and are 150mm above adjacent finished ground levels unless otherwise shown.
3. Levels of the existing road at the point of tie-in with proposed site road must be checked prior to commencement of works.
4. Any discrepancies between the details shown and actual on site conditions to be reported immediately to the engineer prior to commencement of works.

ADOPTABLE ROADS AND SEWERS

1. Roads, footways and parking bays which form part of the highway to be adopted under Section 38 of the Highways Act 1980 shall comply with the requirements of the Adopting Authority.
2. Sewers to be adopted under Section 104 of the Water Industries Act 1991 shall comply with the Water Authorities Association "Sewers for Adoption 6th Edition" with any amendments specified by the Adopting Water Authority.
3. All pipes to be used in adoptable sewerage shall be either clayware to BS EN 295 or concrete to BS EN 1916 and BS 5911: Part 1 with Class S bedding unless otherwise stated. With approval of the Adopting Authority solid wall concentric external rib reinforced uPVC pipes complying with the relevant provisions of BS EN 13476 may be used.
4. Where cover to a pipe is more than 1200mm under adoptable carriageway the trench shall be filled to formation of the carriageway with well compacted DTp Type 1 material.
5. Where cover to a pipe is less than 1200mm under adoptable carriageway it shall be provided with concrete protection in accordance with the specification of the adopting authority and back filled to formation of the carriageway with well compacted DTp Type 1 material. Where concrete bed and surround is specified flexibility of joints is to be maintained by using compressible bitumen impregnated fibreboard at each pipe joint.
6. All existing drainage invert levels, diameters and locations are to be checked by the Contractor prior to the commencement of any proposed drainage work. Any difference between actual and drawn details is to be reported to the Engineer immediately.
7. Positions of existing services/statutory undertakers apparatus adjacent to or crossing proposed sewers is to be checked by the Contractor prior to starting work.

CONSTRUCTION

Please note while these drawings may be used for tender purposes, drawings are subject to Oxfordshire County Council & Thames Water approval as part of ongoing consultations and design check. Amendments may therefore be requested

G	Alternative drainage option added to plan	26.06.17	TB
F	Longitudinal sections amended to suit revised drainage strategy with the introduction of using ponds as storage.	22.09.16	LJ
E	Longitudinal sections amended to show 75mm increase in road level for ramped sections of road.	18.08.16	LJ
D	Highway and S104 drainage amended to suit as-built drainage on suit and renumbered to suit.	10.08.16	LJ
C	Longitudinal sections amended to suit latest layout & drainage redesign.	31.07.16	LJ
B	Road 1 added to longitudinal sections.	21.10.15	LJ
A	Status updated for construction.	26.08.15	LJ
-	First issue.	15.07.15	LJ

Rev.	Description	Date	By
------	-------------	------	----

Client

Project

Cotefield Farm
Bodicote

Title

Long Sections
Sheet 6 of 7

BANNERS GATE
CIVIL, STRUCTURAL & ARCHITECTURAL DESIGN SERVICES
10-11 Birmingham Street, Halesowen, West Midlands B63 3HN
Tel: 0121 687 1500 Fax: 0121 687 1501
E-mail: mail@bannersgate.com

Scale	1:500 H & 1:100 V @ A1	Drawn	LJ
Date	July 2015	Checked	JB
File	15031/dwgs/civils/current	Drawing	15031 - 205 G