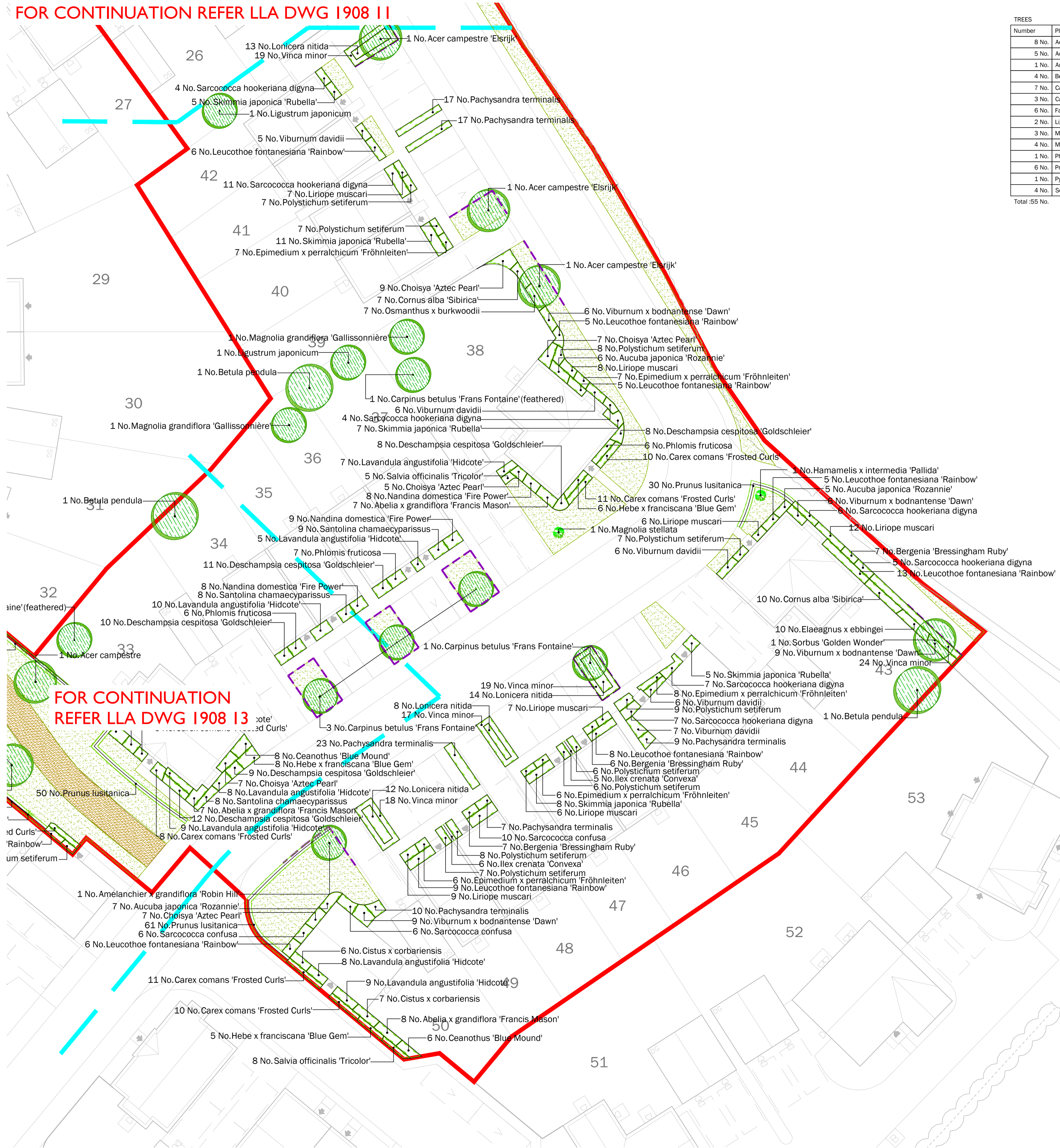


FOR CONTINUATION REFER LLA DWG 1908 11



FOR CONTINUATION REFER LLA DWG 1908 13

TREES

Number	Plant Name	Height	Girth	Pot Size	Specification
8 No.	Acer campestre	400-450cm	16-18cm	45-85L	Extra Heavy Standard: 5 brks: C: Clear Stem min. 200cm
5 No.	Acer campestre 'Elsrijk'	400-450cm	18-20cm	100-200L	Extra Heavy Standard: C: Clear Stem min. 200cm
1 No.	Amelanchier x grandiflora 'Robin Hill'	425-600cm	14-16cm	45-85L	Extra Heavy Standard: 5 brks: C: Clear Stem 175-200cm
4 No.	Betula pendula	400-450cm	16-18cm		Large Feathered: 3x: RB
7 No.	Carpinus betulus 'Frans Fontaine'	450-500cm	18-20cm	100-200L	Extra Heavy Standard: C: Clear Stem min. 200cm
3 No.	Carpinus betulus 'Frans Fontaine'	400-450cm	16-18cm		Large Feathered: 3x: RB
6 No.	Fagus sylvatica	400-450cm	16-18cm	45-85L	Extra Heavy Standard: C: Clear Stem min. 200cm
2 No.	Ligustrum japonicum	400-450cm	18-20cm	100-200L	Full Standard: C: Clear Stem 190-220cm
3 No.	Magnolia 'Galaxy'	400-500cm	18-20cm	100-200L	Extra Heavy Standard: 5 brks: C: Clear Stem min 175cm
4 No.	Magnolia grandiflora 'Gallissonniere'	350-450cm	16-18cm	110L	Extra Heavy Standard: C: Clear Stem 175-200cm
1 No.	Photinia x fraseri 'Red Robin'	225-250cm	14-16cm	70-90L	Spherical Head: Extra Heavy Standard: C: Clear Stem 175-200cm: Neatly Clipped
6 No.	Prunus avium	400-450cm	16-18cm	45-85L	Extra Heavy Standard: C: Clear Stem min. 200cm
1 No.	Pyrus calleryana 'Chanticleer'	450-500cm	18-20cm	100-200L	Extra Heavy Standard: C: Clear Stem min. 200cm
4 No.	Sorbus 'Golden Wonder'	450-500cm	18-20cm	100-200L	Extra Heavy Standard: C: Clear Stem min. 200cm

Total :55 No.

HEDGING

Number	Plant Name	Height	Container	Specification	Density
339 No.	Escallonia 'Donard Seedling'	60-80cm	10L	Bushy: 6 brks: C	0.3Ctr
11 No.	Ilex crenata 'Convexa'	30-40cm	10L	Bushy: 9 brks: C	3/m <sup>2</sup>
521 No.	Prunus lusitanica	80-100cm	10L	Bushy: 6 brks: C	0.3Ctr

Total :871 No.

SHRUBS

Number	Plant Name	Height	Diameter	Container	Specification	Density
74 No.	Abelia x grandiflora 'Francis Mason'	40-60cm		10L	Bushy: 5 brks: C	3/m <sup>2</sup>
90 No.	Aucuba japonica 'Rozannie'	40-60cm		10L	Bushy: 5 brks: C	3/m <sup>2</sup>
20 No.	Brachyglottis 'Sunshine'	40-60cm		10L	Bushy: 8 brks: C	3/m <sup>2</sup>
34 No.	Ceanothus 'Blue Mound'	40-60cm	40-60cm	10L	Bushy: 6 brks: C	3/m <sup>2</sup>
129 No.	Choisya 'Aztec Pearl'	40-60cm		10L	Bushy: 7 brks: C	3/m <sup>2</sup>
58 No.	Cistus x corbariensis	40-60cm		10L	Bushy: 8 brks: C	3/m <sup>2</sup>
11 No.	Convolvulus cneorum	30-40cm		5-7.5L	Bushy: 7 brks: C	3/m <sup>2</sup>
17 No.	Cornus alba 'Sibirica'	80-100cm		10L	Branched: 5 brks: C	3/m <sup>2</sup>
107 No.	Elaeagnus x ebbingei	60-80cm		10L	Branched: 6 brks: C	3/m <sup>2</sup>
14 No.	Euonymus fortunei 'Emerald Gaiety'	30-40cm	30-40cm	10L	Bushy: 11 brks: C	3/m <sup>2</sup>
4 No.	Hamamelis x intermedia 'Pallida'	80-100cm		20-25L	Branched: 5 brks: C	Counted
65 No.	Hebe x franciscana 'Blue Gem'	40-60cm		10L	Bushy: 9 brks: C	3/m <sup>2</sup>
155 No.	Lavandula angustifolia 'Hidcote'	30-40cm		10L	Bushy: 9 brks: C	4/m <sup>2</sup>
110 No.	Leucothoe fontanesiana 'Rainbow'	40-60cm		10L	Bushy: 7 brks: C	3/m <sup>2</sup>
92 No.	Lonicera nitida	60-80cm		10L	Bushy: 7 brks: C	3/m <sup>2</sup>
1 No.	Magnolia stellata	100-125cm		25L	Branched: 5 brks: C	Counted
25 No.	Nandina domestica 'Fire Power'		30-40cm	10L	Bushy: 8 brks: C	4/m <sup>2</sup>
7 No.	Osmanthus x burkwoodii	60-80cm		10L	Bushy: 7 brks: C	3/m <sup>2</sup>
220 No.	Pachysandra terminalis		20-30cm	5-7.5L	Several Shoots: 11 brks: C	5/m <sup>2</sup>
53 No.	Phlomis fruticosa	40-60cm		10L	Branched: 5 brks: C	3/m <sup>2</sup>
13 No.	Pittosporum tenuifolium 'Tom Thumb'	30-40cm		10L	Bushy: 7 brks: C	3/m <sup>2</sup>
53 No.	Ribes sanguineum 'Pulborough Scarlet'	80-100cm		10L	Branched: 7 brks: C	3/m <sup>2</sup>
64 No.	Rosmarinus officinalis	40-60cm		10L	Bushy: 6 brks: C	3/m <sup>2</sup>
31 No.	Santolina chamaecyparissus	30-40cm		10L	Bushy: 9 brks: C	4/m <sup>2</sup>
46 No.	Sarcococca confusa	40-60cm		10L	Bushy: 8 brks: C	3/m <sup>2</sup>
115 No.	Sarcococca hookeriana digyna	30-40cm		10L	Bushy: 8 brks: C	3/m <sup>2</sup>
83 No.	Skimmia japonica 'Rubella'	40-60cm		10L	Bushy: 5 brks: C	3/m <sup>2</sup>
97 No.	Viburnum davidii	30-40cm		10L	Bushy: 5 brks: C	3/m <sup>2</sup>
37 No.	Viburnum x bodnantense 'Dawn'	80-100cm		10L	Branched: 4 brks: C	3/m <sup>2</sup>
134 No.	Vinca minor		30-40cm	10L	Several Shoots: 7 brks: C	3/m <sup>2</sup>

Total :1959 No.

HERBACEOUS

Number	Plant Name	Container	Specification	Density
58 No.	Bergenia 'Bressingham Ruby'	5L	Full Pot: C	5/m <sup>2</sup>
80 No.	Epimedium x perralchicum 'Fröhnleiten'	5L	Full Pot: C	5/m <sup>2</sup>
13 No.	Salvia officinalis 'Tricolor'	5L	Full Pot: C	5/m <sup>2</sup>

Total :151 No.

CLIMBERS

Number	Plant Name	Height	Container	Specification	Density
19 No.	Lonicera japonica 'Halliana'	150cm	25L	Trellis: Several Shoots: 5 brks: C	Counted

Total :19 No.

BULBS

Number	Plant Name	Specification	Density
282 No.	Narcissus pseudonarcissus	Grade 5/6	13/m <sup>2</sup>

Total :282 No.

FERNS

Number	Plant Name	Container	Specification	Density
181 No.	Polystichum setiferum	5L	Full Pot: C	5/m <sup>2</sup>

Total :181 No.

GRASSES

Number	Plant Name	Container	Specification	Density
124 No.	Carex comans 'Frosted Curls'	5L	Full Pot: C	5/m <sup>2</sup>
101 No.	Deschampsia cespitosa 'Goldschleier'	5L	Full Pot: C	5/m <sup>2</sup>
107 No.	Liriope muscari	5L	Full Pot: C	5/m <sup>2</sup>

Total :332 No.

LEGEND

- Existing trees / vegetation - refer to arboricultural report for detail
- Proposed tree
- Proposed hedge
- Proposed climber
- Proposed specimen plant
- Proposed planting
- Proposed grass
- Proposed root barrier - GreenBlue Urban ReRoot 1000 or similar approved
- Page division lines
- Site application boundary

GENERAL NOTES

This drawing is to be used for planting information only, and is subject to alteration through changes to the site layout or until approved by the area designer.

Any species substitution by the contractor must be verified with the Landscape Architect through the Job Architect.

This layout must be checked in accordance with NHBC Standards 2013 (Chapter 4.2 - Building Near Trees & Chapter 9.2 Drives, Paths and Landscaping) by the Regional Engineer prior to implementation.

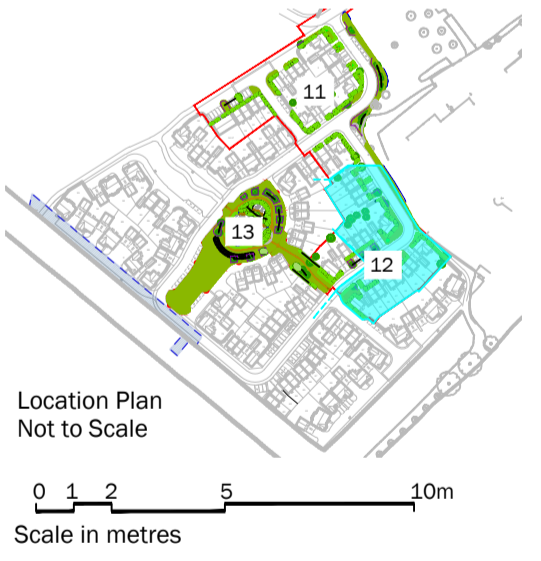
Excavations: Contractors must ensure that they have full information relating to service and drainage positions before undertaking any excavations.

Root barriers to be used in association with tree planting adjacent to kerbs / services / footpaths etc. (GreenBlue Urban ReRoot products or similar application, in accordance with manufacturer's instructions).

For Planting Schedule refer to LLA drawing 1908 12

For Detailed LEAP Proposals refer to LLA drawing 1908 08

For Landscape Specification, Planting Details and Emorgard Seed Mixes refer to LLA drawing 1908 09



Rev	Date	Description
A	29.01.18	POS updated
B	20.04.18	New architectural layout
C	23.04.18	Amendments to planting
D	24.04.18	Amendments to planting outside plot 37
E	14.05.18	New architectural layout
F	07.06.18	General amendments
G	11.06.18	Updated layout
H	14.06.18	Updated layout
I	18.07.18	Updated layout
J	19.07.18	Updated planting schedule
K	15.08.18	Schedule updated
L	15.11.18	Additional tree planting
M	19.11.18	Amendments to tree positions

Title: Detailed Planting Proposals - Phase 1  
Sheet 2 of 3

Project: Blossom Fields, Bodcote, Banbury

Client: Crest Nicholson

Date: December 2017

Scale: 1:200 @ A1

Drawing No: 1908 12 M

Rev: