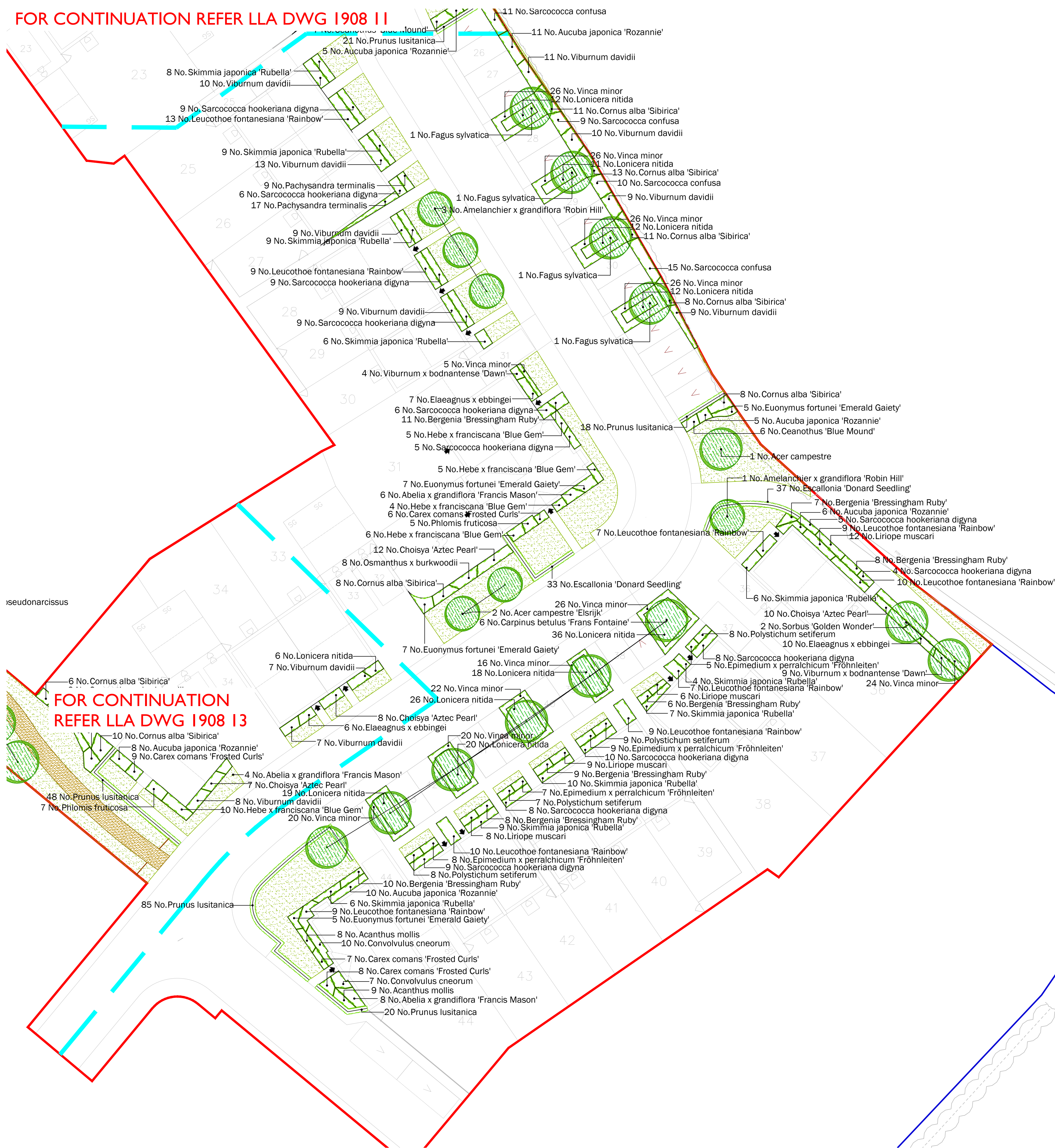


FOR CONTINUATION REFER LLA DWG 1908 11



FOR CONTINUATION REFER LLA DWG 1908 13

TREES

Number	Plant Name	Height	Girth	Pot Size	Specification
12 No.	Acer campestre	400-450cm	16-18cm	45-85L	Extra Heavy Standard: 5 brks: C: Clear Stem min. 200cm
6 No.	Acer campestre 'Elsrijk'	400-450cm	18-20cm	100-200L	Extra Heavy Standard: C: Clear Stem min. 200cm
4 No.	Amelanchier x grandiflora 'Robin Hill'	425-600cm	14-16cm	45-85L	Extra Heavy Standard: 5 brks: C: Clear Stem 175-200cm
11 No.	Carpinus betulus 'Frans Fontaine'	450-500cm	18-20cm	100-200L	Extra Heavy Standard: C: Clear Stem min. 200cm
7 No.	Fagus sylvatica	400-450cm	16-18cm	45-85L	Extra Heavy Standard: C: Clear Stem min. 200cm
1 No.	Liquidambar styraciflua 'Worplesdon'	550-600cm	25-30cm		Semi-Mature: 4x: RB: Clear Stem min. 200cm
9 No.	Prunus avium	400-450cm	16-18cm	45-85L	Extra Heavy Standard: C: Clear Stem min. 200cm
5 No.	Pyrus calleryana 'Chanticleer'	450-500cm	18-20cm	100-200L	Extra Heavy Standard: C: Clear Stem min. 200cm
9 No.	Sorbus 'Golden Wonder'	450-500cm	18-20cm	100-200L	Extra Heavy Standard: C: Clear Stem min. 200cm

Total :64 No.

HEDGING

Number	Plant Name	Height	Container	Specification	Density
482 No.	Escallonia 'Donard Seedling'	60-80cm	10L	Bushy: 6 brks: C	0.3Ctr
252 No.	Prunus lusitanica	80-100cm	10L	Bushy: 6 brks: C	0.3Ctr

Total :734 No.

SHRUBS

Number	Plant Name	Height	Diameter	Container	Specification	Density
53 No.	Abelia x grandiflora 'Francis Mason'	40-60cm		10L	Bushy: 5 brks: C	3/m ²
134 No.	Aucuba japonica 'Rozannie'	40-60cm		10L	Bushy: 5 brks: C	3/m ²
22 No.	Brachyglottis 'Sunshine'	40-60cm		10L	Branched: 8 brks: C	3/m ²
42 No.	Ceanothus 'Blue Mound'		40-60cm	10L	Bushy: 6 brks: C	3/m ²
132 No.	Choisya 'Aztec Pearl'	40-60cm		10L	Bushy: 7 brks: C	3/m ²
21 No.	Cistus x corbariensis	40-60cm		10L	Bushy: 8 brks: C	3/m ²
34 No.	Convolvulus cneorum	30-40cm		5-7.5L	Bushy: 7 brks: C	3/m ²
100 No.	Cornus alba 'Sibirica'	80-100cm		10L	Branched: 5 brks: C	3/m ²
139 No.	Elaeagnus x ebbingei	60-80cm		10L	Branched: 6 brks: C	3/m ²
65 No.	Euonymus fortunei 'Emerald Gaiety'	30-40cm	30-40cm	10L	Bushy: 11 brks: C	3/m ²
49 No.	Hebe x franciscana 'Blue Gem'	40-60cm		10L	Bushy: 9 brks: C	3/m ²
14 No.	Lavandula angustifolia 'Hidcote'	30-40cm		10L	Bushy: 9 brks: C	4/m ²
156 No.	Leucothoe fontanesiana 'Rainbow'	40-60cm		10L	Bushy: 7 brks: C	3/m ²
331 No.	Lonicera nitida	60-80cm		10L	Bushy: 7 brks: C	3/m ²
119 No.	Osmanthus x burkwoodii	60-80cm		10L	Bushy: 7 brks: C	3/m ²
123 No.	Pachysandra terminalis		20-30cm	5-7.5L	Several Shoots: 11 brks: C	5/m ²
12 No.	Philomis fruticosa	40-60cm		10L	Branched: 5 brks: C	3/m ²
20 No.	Santolina chamaecyparissus	30-40cm		10L	Bushy: 9 brks: C	4/m ²
94 No.	Sarcococca confusa	40-60cm		10L	Bushy: 8 brks: C	3/m ²
167 No.	Sarcococca hookeriana digyna	30-40cm		10L	Bushy: 8 brks: C	3/m ²
152 No.	Skimmia japonica 'Rubella'	40-60cm		10L	Bushy: 5 brks: C	3/m ²
169 No.	Viburnum davidii	30-40cm		10L	Bushy: 5 brks: C	3/m ²
33 No.	Viburnum x bodnantense 'Dawn'	80-100cm		10L	Branched: 4 brks: C	3/m ²
481 No.	Vinca minor		30-40cm	10L	Several Shoots: 7 brks: C	3/m ²

Total :2662 No.

HERBACEOUS

Number	Plant Name	Container	Specification	Density
17 No.	Acanthus mollis	5-7.5L	Full Pot: C	5/m ²
153 No.	Bergenia 'Bressingham Ruby'	5L	Full Pot: C	5/m ²
118 No.	Epimedium x perralchicum 'Fröhnleiten'	5L	Full Pot: C	5/m ²

Total :288 No.

CLIMBERS

Number	Plant Name	Height	Container	Specification	Density
7 No.	Lonicera japonica 'Halliana'	150cm	25L	Trellis: Several Shoots: 5 brks: C	Counted

Total :7 No.

BULBS

Number	Plant Name	Specification	Density
513 No.	Narcissus pseudonarcissus	Grade 5/6	13/m ²

Total :513 No.

FERNS

Number	Plant Name	Container	Specification	Density
115 No.	Polystichum setiferum	5L	Full Pot: C	5/m ²

Total :115 No.

GRASSES

Number	Plant Name	Container	Specification	Density
69 No.	Carex comans 'Frosted Curls'	5L	Full Pot: C	5/m ²
70 No.	Liriope muscari	5L	Full Pot: C	5/m ²

Total :139 No.

LEGEND

- Existing trees / vegetation - refer to arboricultural report for detail
- Proposed tree
- Proposed hedge
- Proposed climber
- Proposed planting
- Proposed grass
- Proposed EM2 Standard General Purpose Meadow Mixture by Emorsgate
- Proposed bulb planting
- Proposed Breeced gravel path or similar approved
- Proposed mounding to POS
- Proposed timber knee rail
- Page division lines
- Site application boundary

GENERAL NOTES

This drawing is to be used for planting information only, and is subject to alteration through changes to the site layout or until approved by the area designer.

Any species substitution by the contractor must be verified with the Landscape Architect through the Job Architect.

This layout must be checked in accordance with NHBC Standards 2013 (Chapter 4.2 - Building Near Trees & Chapter 9.2 Drives, Paths and Landscaping) by the Regional Engineer prior to implementation.

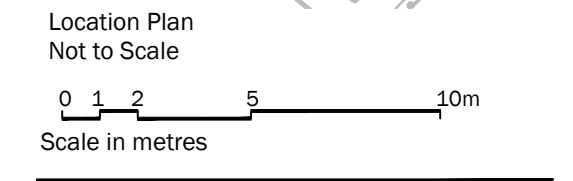
Excavations: Contractors must ensure that they have full information relating to service and drainage positions before undertaking any excavations.

Root barriers to be used in association with tree planting adjacent to kerbs / services / footpaths etc. (GreenBlue Urban ReRoot products or similar application, in accordance with manufacturer's instructions).

For Planting Schedule refer to LLA drawing 1908 06

For Detailed LEAP Proposals refer to LLA drawing 1908 08

For Landscape Specification, Planting Details and Emorsgate Seed Mixes refer to LLA drawing 1908 09



Location Plan Not to Scale

Rev	Date	Description
A	29.01.18	POS updated
B	20.04.18	New architectural layout
C	23.04.18	Amendments to planting
D	24.04.18	Amendments to planting outside plot 37
E	14.05.18	New architectural layout

Title: Detailed Planting Proposals - Phase 1 Sheet 2 of 3
 Project: Blossom Fields, Bodicote, Banbury
 Client: Crest Nicholson
 Date: December 2017
 Scale: 1:200 @ A1
 Drawing No: 1908 12 E
 Rev: