

**Legend**

**PUBLIC\_RIGHTS\_OF\_WAY**

**STATUS**

- Public Footpath
- Public Bridleway
- Restricted Byway
- Byway Open to all Traffic
- SWIFT\_RECORDS
- PROTECTED\_AND\_NOTABLE\_SPECIES
- PROTECTED\_SPECIES\_BUFFER
- ROAD\_VERGE\_NATURE\_RESERVES
- EIL\_TEXT
- ASSETS OF COMMUNITY VALUE

- Area TPOs
- Group TPOs
- TPO Trees
- Woodland TPOs

**LISTED BUILDINGS**

- GRADE**
- I
  - II\*
  - II
  - DL
  - CURTILAGE LISTING
  - LOCALLY\_LISTED\_BUILDINGS
  - ARTICLE\_4
  - ARCHAEOLOGICAL\_CONSTRAINT\_PRIORITY\_AREAS
  - SCHEDULED\_ANCIENT\_MONUMENT
  - EIL\_REGIONS
  - PONDS\_MAPPING (INCLUDING GREAT CRESTED NEWTS)
  - NERC ACT S41 Habitats (Previously UKBAP PRIORITY HABITATS)
  - REGISTERED\_COMMON\_LAND
  - SPECIAL\_SITES\_OF\_SCIENTIFIC\_INTEREST
  - SPECIAL\_AREAS\_OF\_CONSERVATION
  - ANCIENT\_WOODLAND
  - CONSERVATION\_AREAS
  - DISTRICT\_WILDLIFE\_SITES
  - LOCAL\_WILDLIFE\_SITES
  - PROPOSED\_NEW\_LWS\_AND\_EXTENSIONS\_LWS
  - LOCAL\_NATURE\_RESERVE
  - PARKS\_AND\_GARDENS
  - AREAS\_OF\_OUTSTANDING\_NATURAL\_BEAUTY
  - RAILWAY\_TUNNEL
  - HIGH\_PRESSURE\_GAS\_PIPELINES
  - LGS\_POINTS
  - LGS\_POLYGONS

**POTENTIALLY CONTAMINATED LAND**

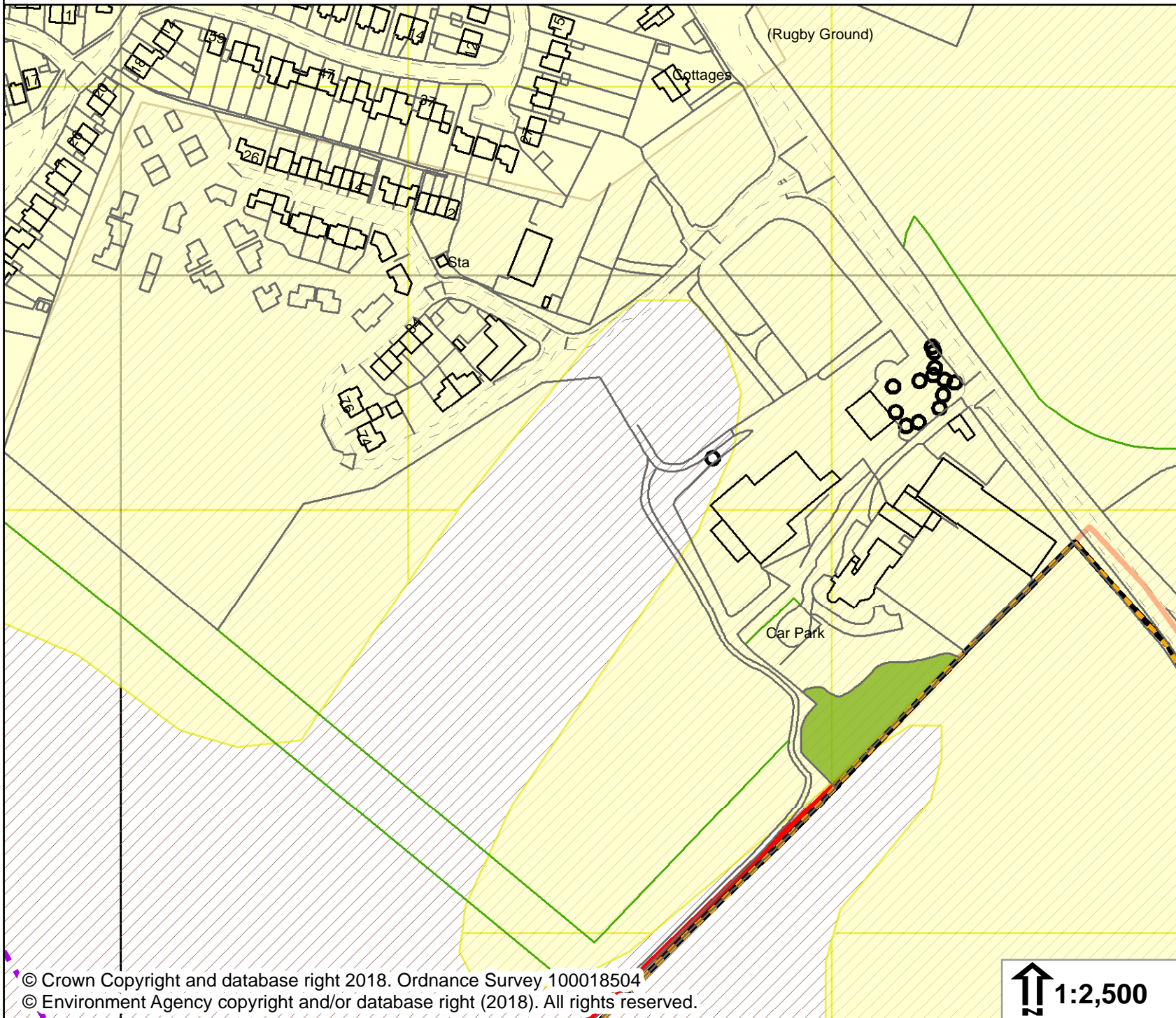
- Buffer Distance**
- 0
  - 50
- EA LANDFILL\_SITES**
- Buffer Distance**
- 0
  - 250
- HISTORIC\_LANDFILL\_SITES\_10K
  - BANK\_TOP\_WIDTH\_PLANNING
  - CRT\_HOUSEHOLD\_AND\_MINOR\_SCALE\_DEVELOPMENTS
  - CRT\_EIA\_AND\_MAJOR\_SCALE\_DEVELOPMENTS
  - Flood Zone 3
  - Flood Zone 2
  - NAT\_FSA
  - NAT\_DEFENCES
  - NAT\_AREAS\_BENEFIT
  - NAT\_CENTRELINES

**HS2 SAFEGUARDING\_ZONES**

- Type**
- Safeguarding Limits
  - Sub-Surface
  - Surface
  - NATURALLY\_ELEVATED\_ARSENIC
  - GREEN BELT
  - CONSERVATION\_TARGET\_AREAS
  - MINERAL\_CONSULTATION\_REGION

**Neighbourhood Development Plans**

- Details**
- Neighbourhood Plan Area
  - Important Amenity Green Spaces
  - Local Green Spaces
  - NATIONAL\_GRID\_REFERENCE
  - WARDS
  - PARISHES



© Crown Copyright and database right 2018. Ordnance Survey 100018504  
© Environment Agency copyright and/or database right (2018). All rights reserved.

↑ 1:2,500