



SECTION 104 - NOT APPROVED
SECTION 38 - NOT APPROVED

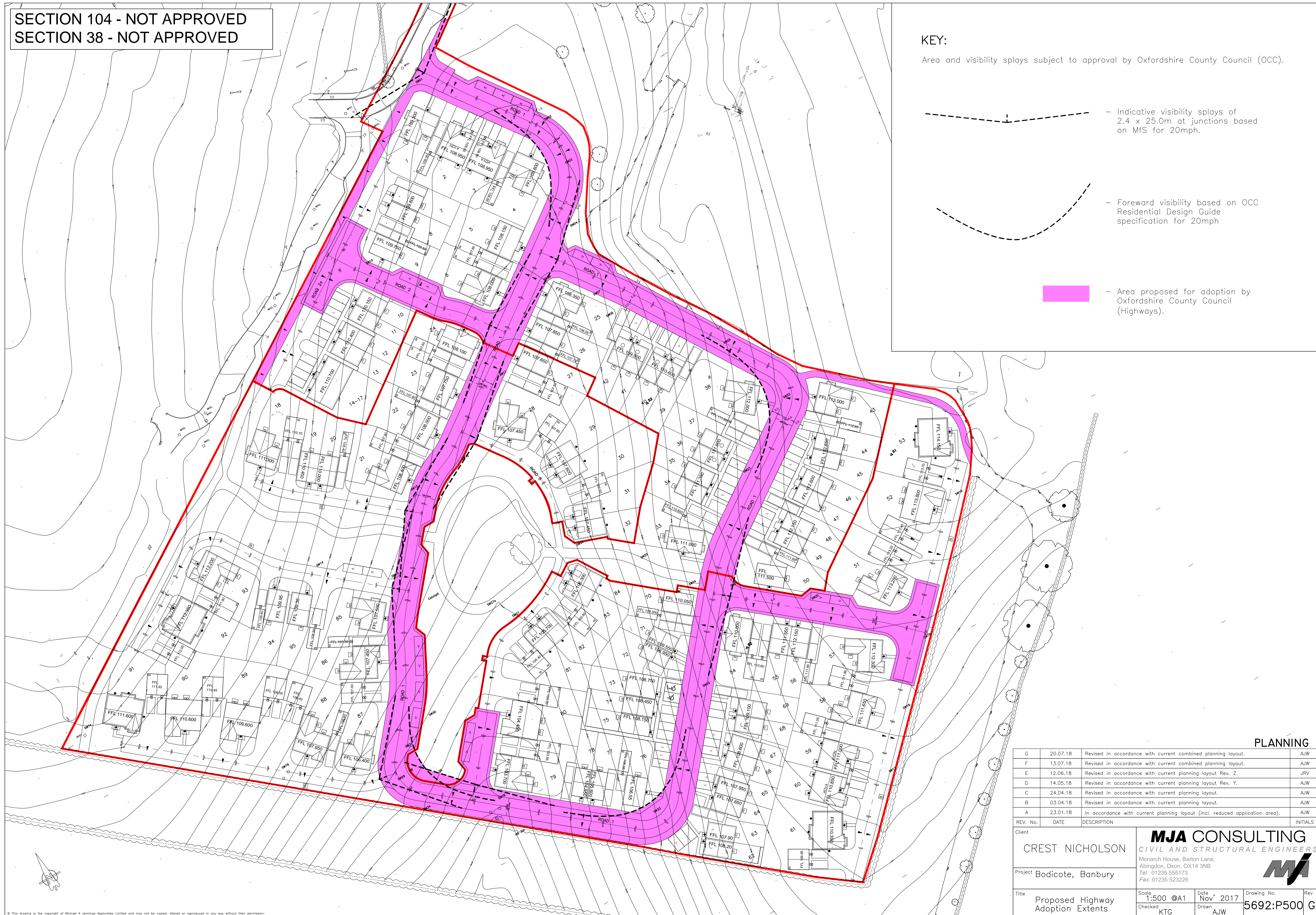
KEY:

Area and visibility splays subject to approval by Oxfordshire County Council (OCC).

 - Indicative visibility splays of 2.4 x 25.0m at junctions based on MfS for 20mph.

 - Forward visibility based on OCC Residential Design Guide specification for 20mph

 - Area proposed for adoption by Oxfordshire County Council (Highways).



PLANNING

REV. No.	DATE	DESCRIPTION	INITIALS
G	20.07.18	Revised in accordance with current combined planning layout.	AJW
F	13.07.18	Revised in accordance with current combined planning layout.	AJW
E	12.06.18	Revised in accordance with current planning layout Rev. Z.	JRV
D	14.05.18	Revised in accordance with current planning layout Rev. Y.	AJW
C	24.04.18	Revised in accordance with current planning layout.	AJW
B	03.04.18	Revised in accordance with current planning layout.	AJW
A	23.01.18	In accordance with current planning layout (incl. reduced application area).	AJW

Client CREST NICHOLSON		MJA CONSULTING CIVIL AND STRUCTURAL ENGINEERS	
Project Bodicote, Banbury		Monarch House, Barton Lane, Abingdon, Oxon, OX14 3NB Tel: 01235 555173 Fax: 01235 523226	
Title Proposed Highway Adoption Extents	Scale 1:500 @A1	Date Nov 2017	Drawing No. 5692:P500
Checked KTG	Drawn AJW	Rev G	