

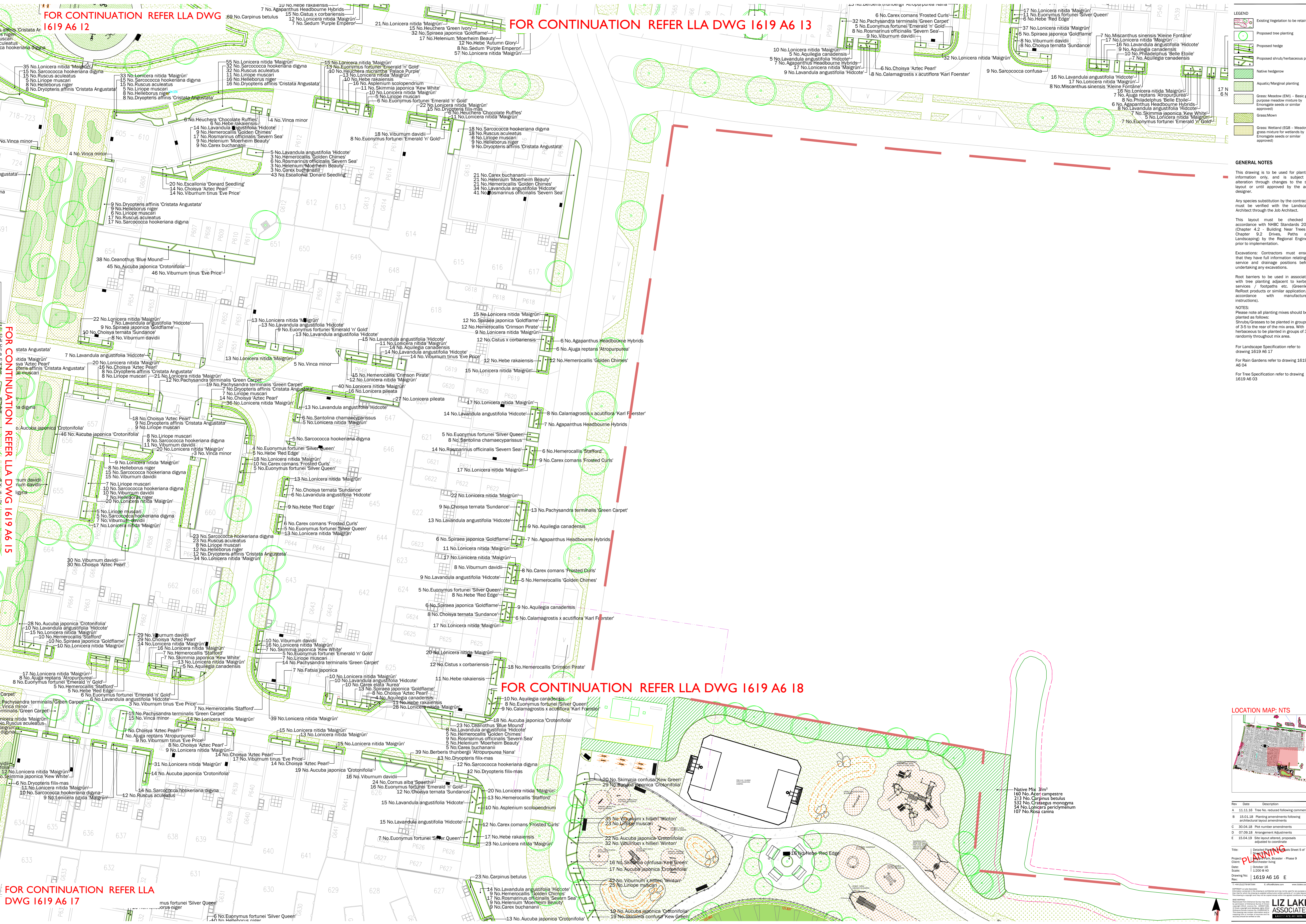
FOR CONTINUATION REFER LLA DWG 1619 A6 12

FOR CONTINUATION REFER LLA DWG 1619 A6 13

FOR CONTINUATION REFER LLA DWG 1619 A6 18

FOR CONTINUATION REFER LLA DWG 1619 A6 15

FOR CONTINUATION REFER LLA DWG 1619 A6 17



- LEGEND**
- Existing Vegetation to be retained
 - Proposed tree planting
 - Proposed shrub/herbaceous planting
 - Native hedgehog
 - Aquatic/Marginal planting
 - Grass: Meadow (EM1 - Basic general purpose meadow mixture by Erongate seeds or similar approved)
 - Grass:Mown
 - Grass: Wetland (EG8 - Meadow grass mixture for wetlands by Erongate seeds or similar approved)

GENERAL NOTES

This drawing is to be used for planting information only, and is subject to alteration through changes to the site layout or until approved by the area designer.

Any species substitution by the contractor must be verified with the Landscape Architect through the Job Architect.

This layout must be checked in accordance with NRC Standards 2013 (Chapter 4.2 - Building Near Trees & Chapter 9.2 Drives, Paths and Landscaping) by the Regional Engineer prior to implementation.

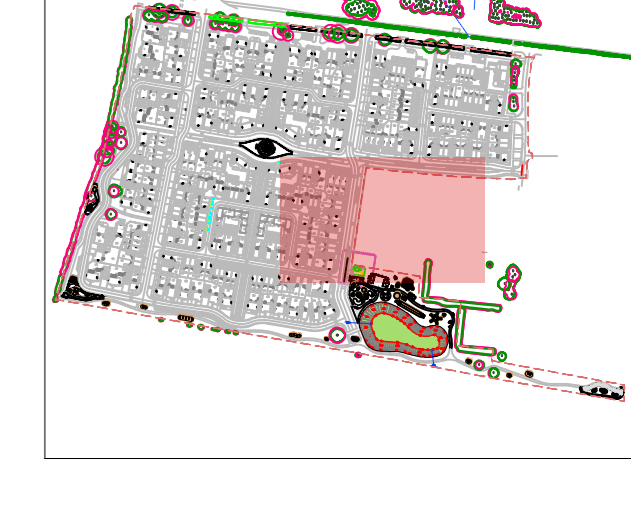
Excavations: Contractors must ensure that they have full information relating to service and drainage positions before undertaking any excavations.

Root barriers to be used in association with tree planting adjacent to kerbs / services / footpaths etc. (Greenleaf ReRoot products or similar application, in accordance with manufacturers instructions).

NOTES:
Please note all planting mixes should be planted as follows:
Shrubs/Grasses to be planted in groups of 3-5 to the rear of the mix area. With herbaceous to be planted in groups of 3 randomly throughout mix area.

For Landscape Specification refer to drawing 1619 A6 17
For Rain Gardens refer to drawing 1619 A6 04
For Tree Specifications refer to drawing 1619 A6 03

LOCATION MAP: NTS



Rev	Date	Description
A	11.11.16	Tree No. reduced following comments
B	10.01.18	Planting amendments following architectural layout amendments
C	30.04.18	Plot number amendments
D	07.09.18	Arrangement Adjustments
E	15.04.19	Site layout amended, proposals adjusted to coordinate

Project: **PLANNING**
Client: Rochester Living
Scale: 1:200 @ A0
Drawing No: 1619 A6 16 E

LIZ LAKE ASSOCIATES