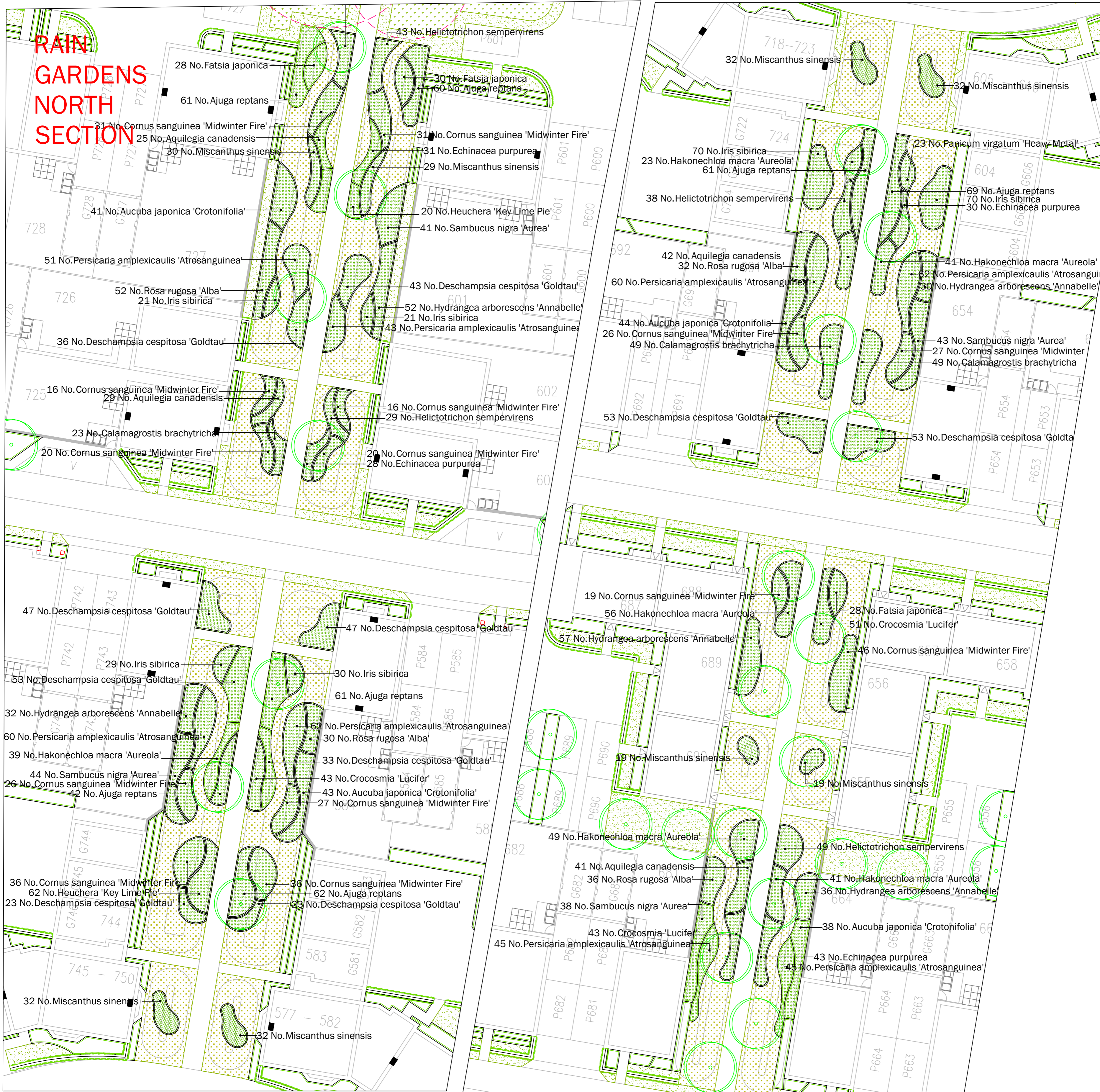


RAIN GARDENS NORTH SECTION



LEGEND

- Existing Vegetation to be retained
- Proposed Trees
- Native Hedgerow
- Hedging
- Shrub/herbaceous planting
- Aquatic/marginal planting
- Grass: Meadow (EM1 - Basic general purpose meadow mixture by Emorsgate seeds or similar approved)
- Grass:Mown
- Grass: Wetland (EG8 - Meadow grass mixture for wetlands by Emorsgate seeds or similar approved)

GENERAL NOTES

This drawing is to be used for planting information only, and is subject to alteration through changes to the site layout or until approved by the area designer.

Any species substitution by the contractor must be verified with the Landscape Architect through the Job Architect.

This layout must be checked in accordance with NHBC Standards 2013 (Chapter 4.2 - Building Near Trees & Chapter 9.2 Drives, Paths and Landscaping) by the Regional Engineer prior to implementation.

Excavations: Contractors must ensure that they have full information relating to service and drainage positions before undertaking any excavations.

Root barriers to be used in association with tree planting adjacent to kerbs / services / footpaths etc. (Greenleaf ReRoot products or similar application, in accordance with manufacturer's instructions).

NOTES: Please note all planting mixes should be planted as follows: Shrubs/Grasses to be planted in groups of 3-5 with herbaceous to be planted randomly throughout mix area.

For Landscape Specification refer to drawing 1619 A6 17

For Tree Specification refer to drawing 1619 A6 03

RAIN GARDEN PLANTING SCHEDULE

SHRUBS

| Number | Plant Name | Height | Container | Specification | Density |
|---------|-----------------------------------|---------|-----------|---------------------|------------------|
| 190 No. | Aucuba japonica 'Crotonifolia' | 40-60cm | 5L | Bushy: 3 brks: C | 4/m ² |
| 556 No. | Cornus sanguinea 'Midwinter Fire' | 60-80cm | 5L | Branched: 4 brks: C | 4/m ² |
| 163 No. | Fatsia japonica | 30-40cm | 3L | Leader: C | 5/m ² |
| 207 No. | Hydrangea arborescens 'Annabelle' | 40-60cm | 3L | Branched: 3 brks: C | 5/m ² |
| 217 No. | Rosa rugosa 'Alba' | 40-60cm | 3L | Branched: 3 brks: C | 5/m ² |
| 128 No. | Sambucus nigra 'Aurea' | 40-60cm | 3L | Branched: 3 brks: C | 4/m ² |

Total: 1461 No.

HERBACEOUS

| Number | Plant Name | Container | Specification | Density |
|---------|---------------------------------------|-----------|---------------|------------------|
| 294 No. | Ajuga reptans | 2L | Full Pot: C | 6/m ² |
| 112 No. | Aquilegia canadensis | 2L | Full Pot: C | 6/m ² |
| 146 No. | Echinacea purpurea | 2L | Full Pot: C | 6/m ² |
| 102 No. | Heuchera 'Key Lime Pie' | 2L | Full Pot: C | 6/m ² |
| 567 No. | Iris sibirica | 2L | Full Pot: C | 6/m ² |
| 432 No. | Persicaria amplexicaulis 'Atrounguea' | 2L | Full Pot: C | 6/m ² |
| 23 No. | Rudbeckia subtomentosa 'Henry Eilers' | 2L | Full pot: C | 6/m ² |

Total: 1676 No.

BULBS

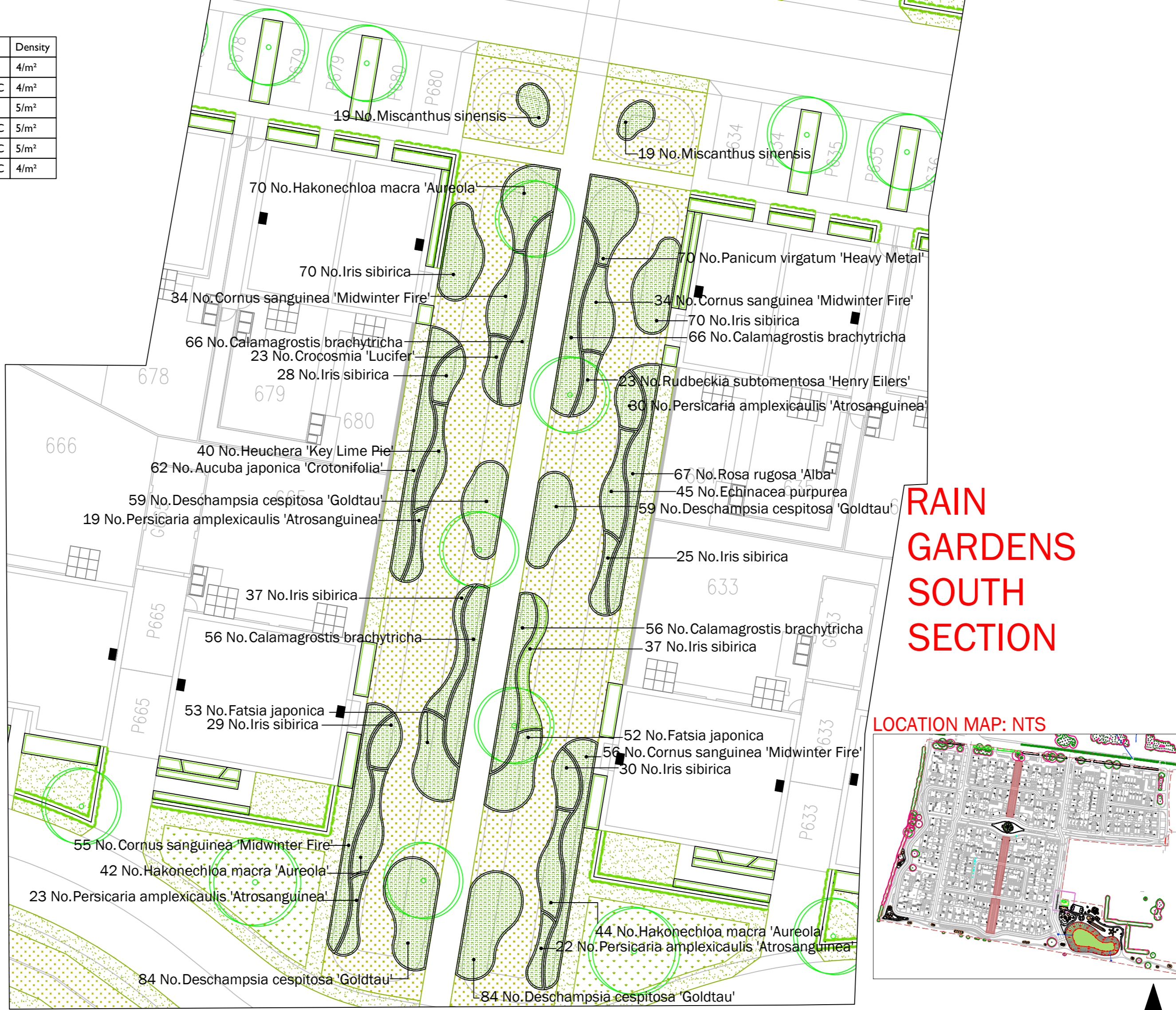
| Number | Plant Name | Pot Size | Specification | Density |
|---------|--------------------|----------|---------------|------------------|
| 160 No. | Crocsmia 'Lucifer' | 1.5-2L | Full Pot: C | 6/m ² |

Total: 160 No.

GRASSES

| Number | Plant Name | Container | Specification | Density |
|---------|---------------------------------|-----------|---------------|------------------|
| 365 No. | Calamagrostis brachytricha | 2L | Full Pot: C | 5/m ² |
| 611 No. | Deschampsia cespitosa 'Goldtau' | 2L | Full Pot: C | 5/m ² |
| 366 No. | Hakonechloa macra 'Aureola' | 2L | Full Pot: C | 6/m ² |
| 159 No. | Helictotrichon sempervirens | 2L | Full Pot: C | 6/m ² |
| 225 No. | Miscanthus sinensis | 2L | Full Pot: C | 5/m ² |
| 136 No. | Panicum virgatum 'Heavy Metal' | 2L | Full Pot: C | 6/m ² |

Total: 1862 No.



RAIN GARDENS SOUTH SECTION

LOCATION MAP: NTS



| Rev | Date | Description |
|-----|----------|---|
| A | 11.11.16 | Tree No. reduced following comments |
| B | 23.01.18 | Tree No. reduced following comments |
| C | 30.04.18 | Plot number amendments |
| D | 07.09.18 | Planting Adjustments |
| E | 15.04.19 | Site layout altered, proposals adjusted to coordinate |

Title: Rain Gardens North & South Section Proposal
 Project: The Park, Bicester - Phase 9
 Client: Bicester Living
 Date: October 16
 Scale: 1:200 @ A1
 Drawing No: 1619 A6 04 E
 Rev: 1

T: +44 (0)1295 647044 E: office@lize.co.uk www.lize.co.uk

LIZ LAKE ASSOCIATES
 LANDSCAPE ARCHITECTS