

FOR CONTINUATION REFER LLA DWG 1619 A6 16

- LEGEND**
- Existing Vegetation to be retained
 - Proposed tree planting
 - Proposed hedge
 - Proposed shrub/herbaceous planting
 - Native hedgerow
 - Aquatic/Marginal planting
 - Grass: Meadow (EM1) - Basic general purpose meadow mixture by Ernage seeds or similar approved
 - Grass:Mown
 - Grass: Wetland (EG8) - Meadow grass mixture for wetlands by Ernage seeds or similar approved

GENERAL NOTES

This drawing is to be used for planting information only, and is subject to alteration through changes to the site layout or until approved by the area designer.

Any species substitution by the contractor must be verified with the Landscape Architect through the Job Architect.

This layout must be checked in accordance with NHBC Standards 2013 (Chapter 4.2 - Building Near Trees & Chapter 9.2 Drives, Paths and Landscaping) by the Regional Engineer prior to implementation.

Excavations: Contractors must ensure that they have full information relating to service and drainage positions before undertaking any excavations.

Root barriers to be used in association with tree planting adjacent to kerbs / footpaths etc. (Greenleaf ReRoot products or similar application, in accordance with manufacturers instructions).

NOTES:
Please note all planting mixes should be planted as follows:
Shrubs/Grasses to be planted in groups of 3-5 to the rear of the mix area. With herbaceous to be planted in groups of 3 randomly throughout mix area.

For Landscape Specification refer to drawing 1619 A6 17

For Rain Gardens refer to drawing 1619 A6 04

For Tree Specification refer to drawing 1619 A6 03

For Rain Gardens refer to drawing 1619 A6 04

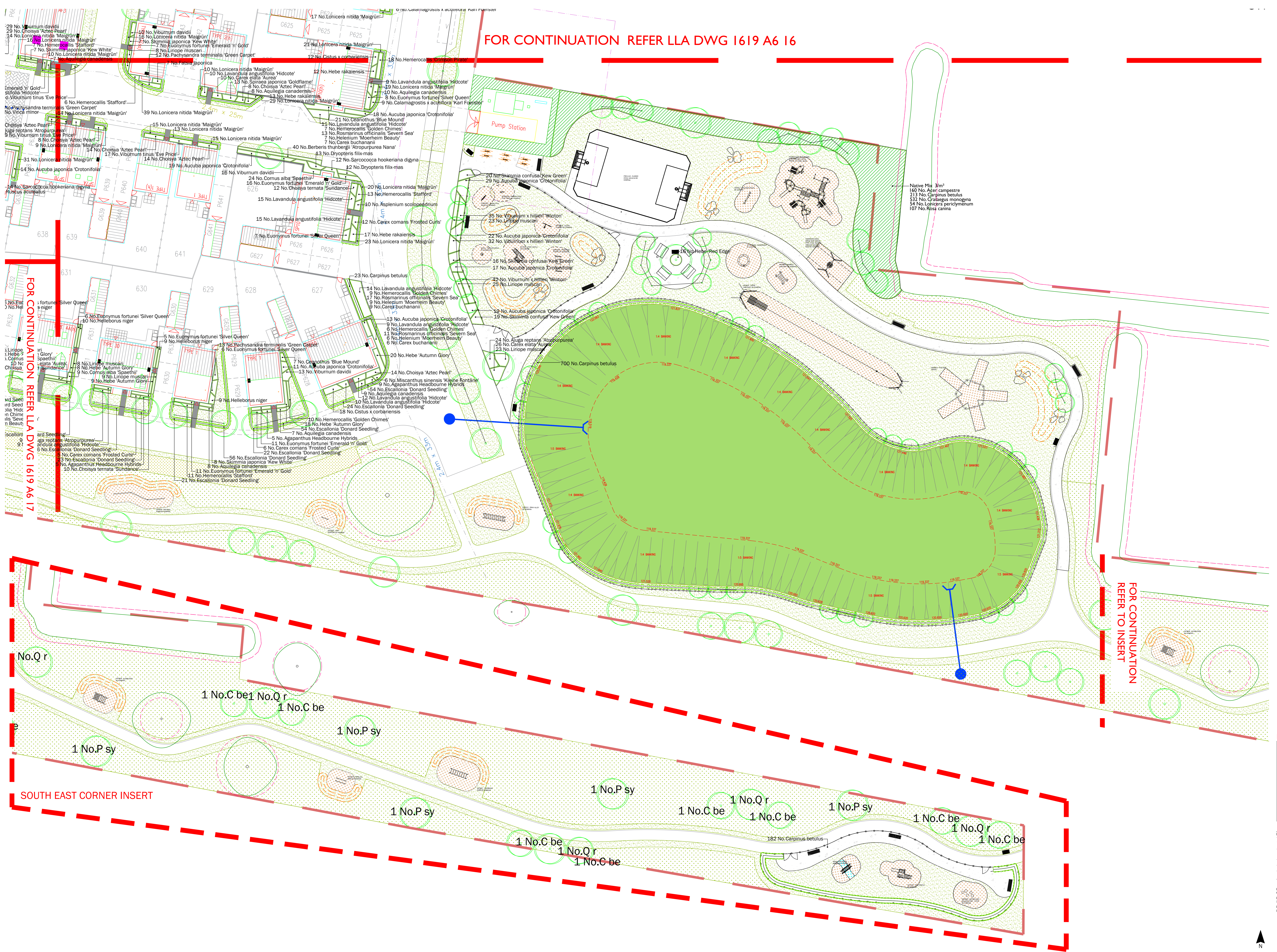
For Tree Specification refer to drawing 1619 A6 03

LOCATION MAP: NTS



Rev	Date	Description
A	11.11.16	Tree No. reduced following comments/ Tree specification updated
B	15.01.18	Planting amendments following architectural layout amendments
C	30.04.18	Plot number amendments
D	07.08.18	Arrangements & Planting Adjustments

Title: Details Planting
 Project: Rochester Living
 Client: Rochester Living
 Date: 15.01.18
 Scale: 1:200 @ A0
 Drawing No: 1619 A6 18 D
 Rev: 0



FOR CONTINUATION REFER LLA DWG 1619 A6 17

FOR CONTINUATION REFER TO INSERT

SOUTH EAST CORNER INSERT