

LEGEND	
	Existing Vegetation to be retained
	Proposed Trees

**GENERAL NOTES**

This drawing is to be used for planting information only, and is subject to alteration through changes to the site layout or until approved by the area designer.

Any species substitution by the contractor must be verified with the Landscape Architect through the Job Architect.

This layout must be checked in accordance with NHBC Standards 2013 (Chapter 4.2 - Building Near Trees & Chapter 9.2 Drives, Paths and Landscaping) by the Regional Engineer prior to implementation.

Excavations: Contractors must ensure that they have full information relating to service and drainage positions before undertaking any excavations.

Root barriers to be used in association with tree planting adjacent to kerbs / services / footpaths etc. (Greenleaf ReRoot products or similar application, in accordance with manufacturer's instructions).

For Landscape Specification refer to drawing 1619 A6 17

**TREE SCHEDULE**

Number	Abbreviation	Plant Name	Heights	Girth	Specification
8 No.	A ca	Acer campestre	500-550cm	20-25cm	Semi-Mature: 3x: RB: Clear Stem min. 200cm
39 No.	A ca 'S'	Acer campestre 'Sreetwise'	400-450cm	18-20cm	Extra Heavy Standard: 3x: RB: Clear Stem min. 200cm
12 No.	A ps	Acer pseudoplatanus	550-600cm	25-30cm	Semi-Mature: 4x: RB: Clear Stem min. 200cm
12 No.	A col	Alnus cordata	400-450cm	14-16cm	Extra Heavy Standard: C: Clear Stem min. 200cm
8 No.	A gl	Alnus glutinosa	400-450cm	14-16cm	Large Feathered: 7 trunks: 3x: RB
9 No.	A gl 'T'	Alnus glutinosa 'Imperial'	400-450cm	14-16cm	Extra Heavy Standard: 3x: RB: Clear Stem min. 200cm
56 No.	A x g 'R'H'	Amanitaceae x grandiflora 'Robin Hill'	450-625cm	16-18cm	Extra Heavy Standard: 3x: RB: Clear Stem min. 200cm
25 No.	B ni	Betula nigra	450-500cm	18-20cm	Extra Heavy Standard: 3x: RB: Clear Stem min. 200cm
39 No.	C be	Carpinus betulus	350-425cm	20-25cm	4x: Large Feathered: RB
22 No.	C be 'F'	Carpinus betulus 'Frans Fontaine'	450-500cm	18-20cm	Extra Heavy Standard: 3x: RB: Clear Stem min. 200cm
6 No.	C be 'F' P	Carpinus betulus 'Frans Fontaine'	550-600cm	25-30cm	Semi-Mature: 4x: RB: Clear Stem min. 200cm
1 No.	P p	Parrotia persica	350-400cm		Multi-Stemmed: Bushy: 3 stems min.: 4x: RB
19 No.	Q r	Quercus robur	600-650cm	30-35cm	Semi-Mature: 4x: RB: Clear Stem min. 200cm
69 No.	T co 'r'	Tilia cordata 'Greenspire'	550-600cm	25-30cm	Semi-Mature: 4x: RB: Clear Stem min. 200cm
7 No.	T co 'G'	Tilia cordata 'Greenspire'	600-650cm	30-35cm	Semi-Mature: 4x: RB: Clear Stem min. 200cm

Total: 324 No.

**CONFERS**

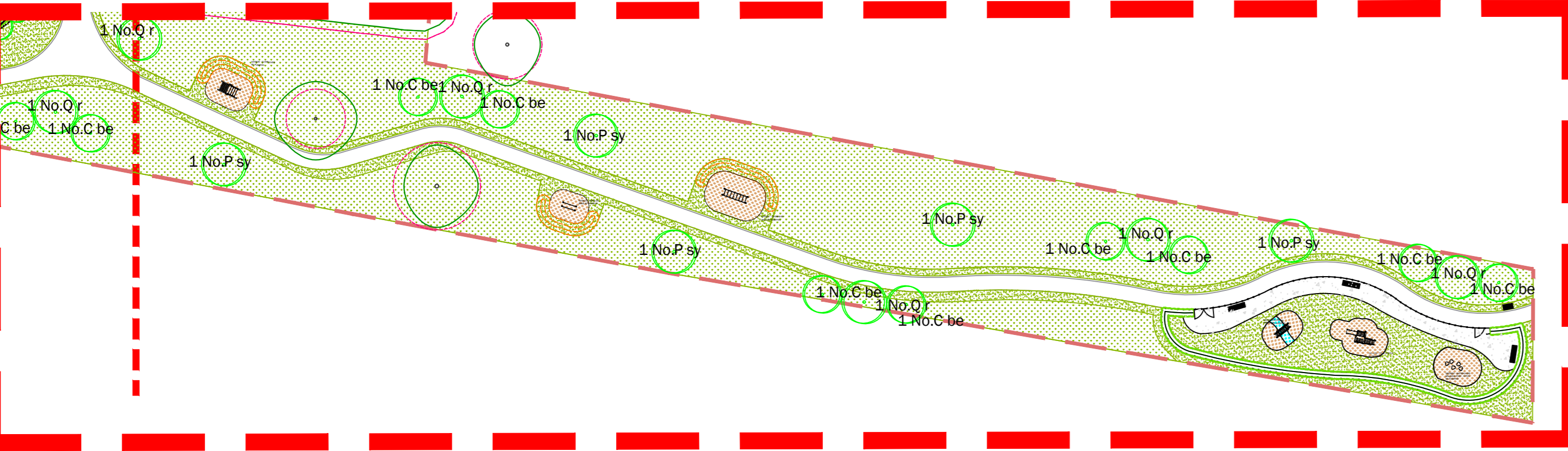
Number	Plant Name	Heights	Container	Specification	Density	Abbreviated Text
18 No.	Prunus sylvatica	300-350cm		Leader with Lateral: 5x: RB: Clear Stem min. 200cm	Counted	P sy

Total: 18 No.

Rev	Date	Description
A	11.11.18	Tree No. reduced following comments
B	23.01.18	Tree planting amendments following updated layout.
C	09.02.18	Tree planting amendments following site removal.
D	01.03.18	Tree planting amendments following layout amendments.
E	30.04.18	Plot number amendments.
F	07.09.18	Road, Attenuation & Planting adjustments.

Title: Details of residential development - Phase 9  
 Project: Rochester Living  
 Client: Sustrac  
 Scale: 1:500 @ A0  
 Drawing No: 1619 A6 03 F  
 Rev: 1619 A6 03 F

**SOUTH EAST CORNER INSERT**



FOR CONTINUATION REFER TO INSERT