

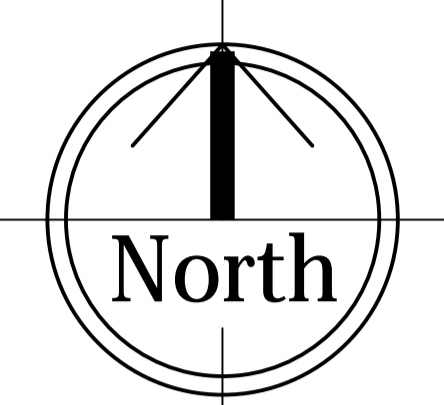
STANDARD ASPHALT CONSTRUCTION TABLE
(Use red boxed specification)

Construction Layer	Light usage eg. private drives, small office car parks			Heavier usage eg. public car parks or areas where risks of indentation, light turning or on-the-spot power assisted manoeuvring, or stay use by heavier vehicles are present		
	Alternative materials	Binder Grade (preferred grade is highlighted)	Nominal thickness mm	Alternative materials	Binder Grade (preferred grade is highlighted)	Nominal thickness mm
SURFACE COURSE (see note 1a-1e)	SMA 6 surf PD 6691 Annex D	100/150, 70/100 or 40/60	25	HRA 30/14 surf PD 6691 Annex C (see note 1d)	40/60	40
	AC 6 med surf PD 6691 Annex B	160/220	25	AC 10 close surf PD 6691 Annex B (see note 1a)	100/150	30
	AC 6 dense surf PD 6691 Annex B	160/220 or 100/150	25	AC 6 dense surf PD 6691 Annex B (see note 1b)	100/150	25
	AC 10 close surf PD 6691 Annex B	160/220 or 100/150	30	SMA 10 surf PD 6691 Annex D SMA 6 surf PD 6691 Annex D	40/60 or PMB 40/60 or PMB	30
BINDER COURSE (see note 1f)	AC 20 open bin PD 6691 Annex B	160/220	60	AC 20 dense bin PD 6691 Annex B	100/150 or 40/60	60
	AC 20 dense bin PD 6691 Annex B	100/150 or 40/60	60	HRA 60/20 bin PD 6691 Annex C	40/60	60
BASE	Hardcore (see note 1g)	-	150	Hardcore (see note 1g)	-	200
	AC 32 base PD 6691 Annex B	100/150 or 40/60	75	AC 32 base PD 6691 Annex B	100/150 or 40/60	100

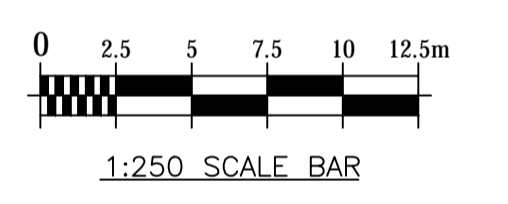
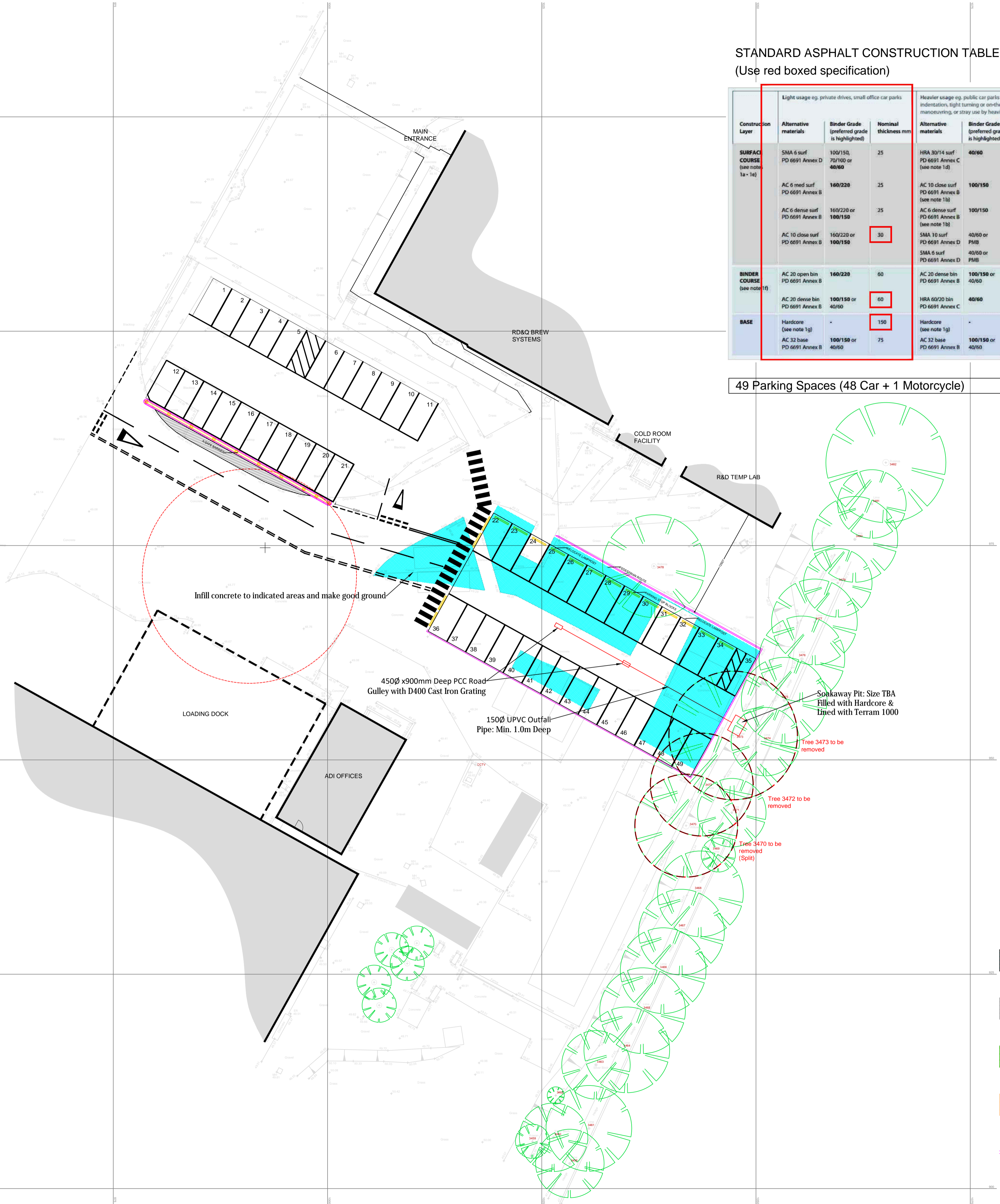
This drawing is the copyright and remains the property of Insight Architects Limited and all associated companies, and must not be reproduced in whole or in part without their written permission.

Do not scale from this drawing. Use printed dimensions only. All dimensions are to be checked by site measurements and discrepancies reported immediately.

This drawing must be read in conjunction with all Architects, Consultants, Subcontractors and other Consultants drawings, together with any specifications and other contract documents.



49 Parking Spaces (48 Car + 1 Motorcycle)



- NEW CONCRETE
- NEW ASPHALT
- NEW LANDSCAPING
- NEW PAVING (tactile to crossings)
- NEW KERBS

REV	DESCRIPTION	DATE
K	Drawings amended following comments	20/07/2017
J	Drawings amended following comments	21/11/2016
H	Drawings updated following comments	16/11/2016
G	Drawings updated following comments	17/10/2016
F	Drawings updated following comments	03/10/2016
E	Scheme revised following site meeting	29/09/2016
D	Updated following site meeting	06/07/2016
C	Revised and issued for construction	07/06/2016
B	Car park revised following site meeting	25/04/2016
A	Car park & Compound layout revised	21/04/2016
-	First Issue	19/04/2016

INSIGHT ARCHITECTS LIMITED

Unit A1, Croft Road Business Park, Shearmanhope, Huddersfield, HD8 9EB
Tel: 01484 881808, Email: info@insightarchitects.design, Web: www.insightarchitects.design

adi Total Engineered Solutions **JDE**

Client: ADI

Project: JDE Banbury

Title: PROPOSED RECONFIGURED CAR PARK Option 2

Date: 19/04/2016 Scale: 1:250 Sheet Size: A1

Drawn: AC Email: design@insightarchitects.design

Issue: FOR COMMENT

Project Ref.	Drawing No.	Revision
1612-04	C101 - 2	K