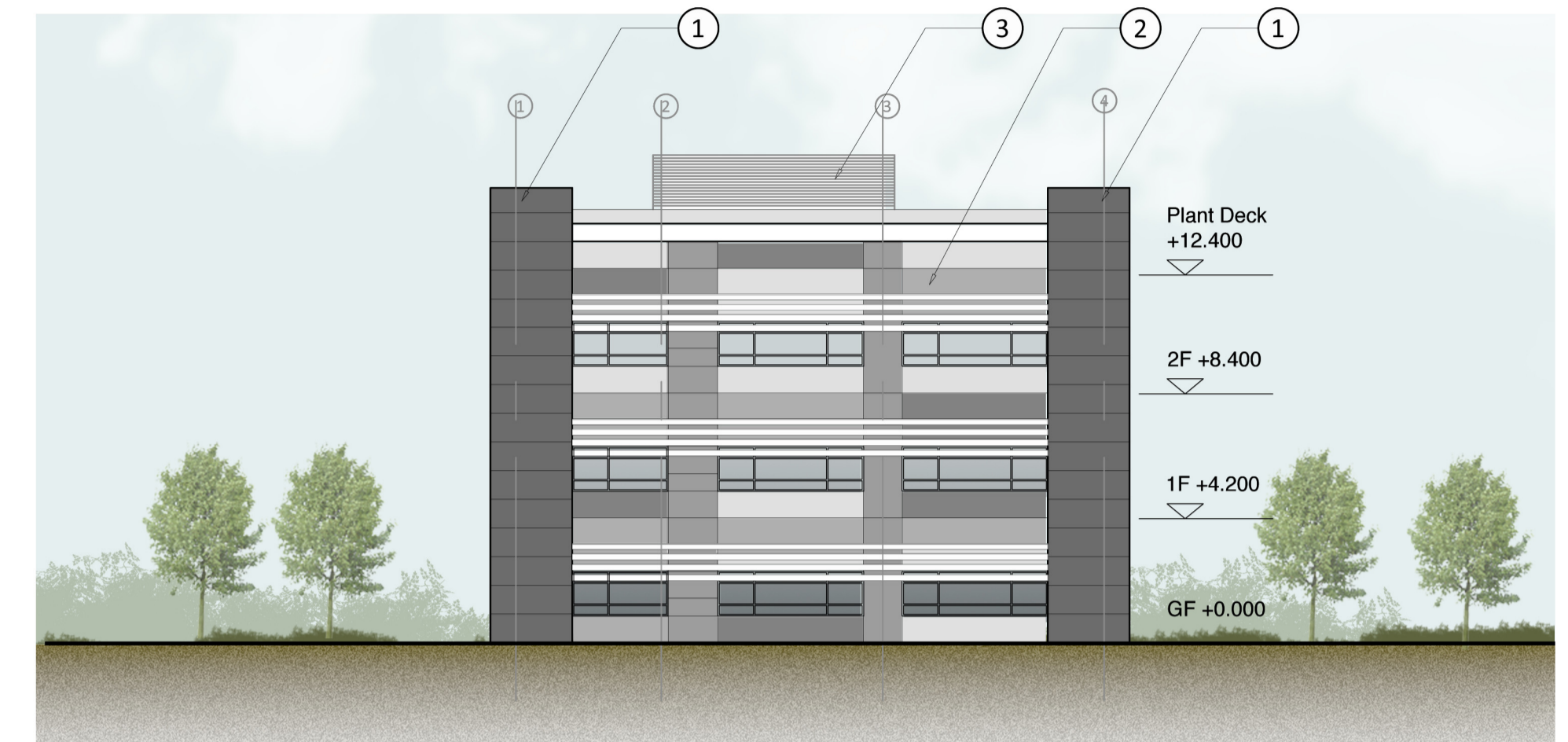
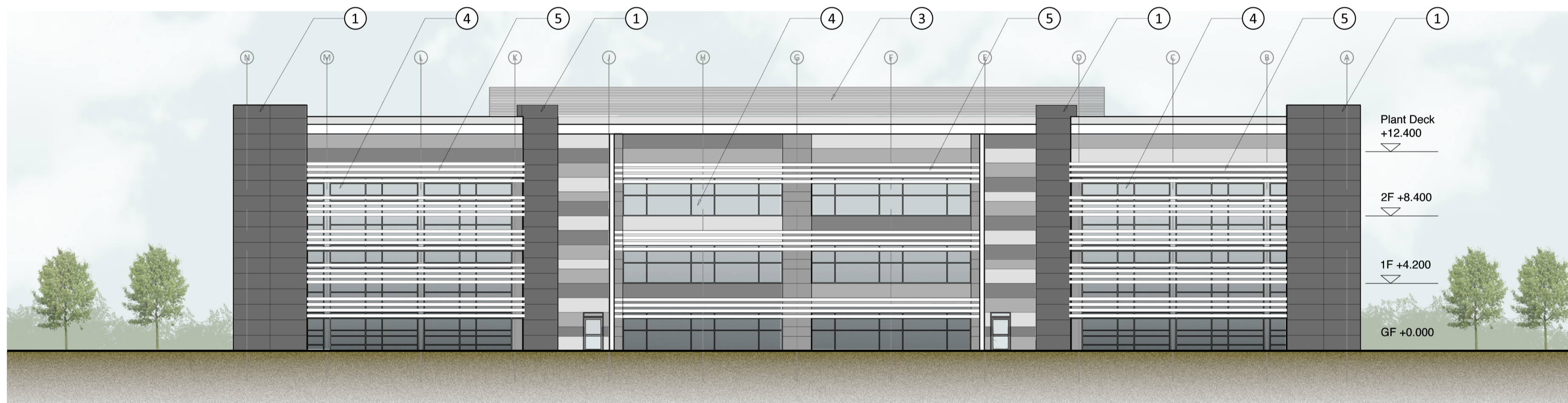


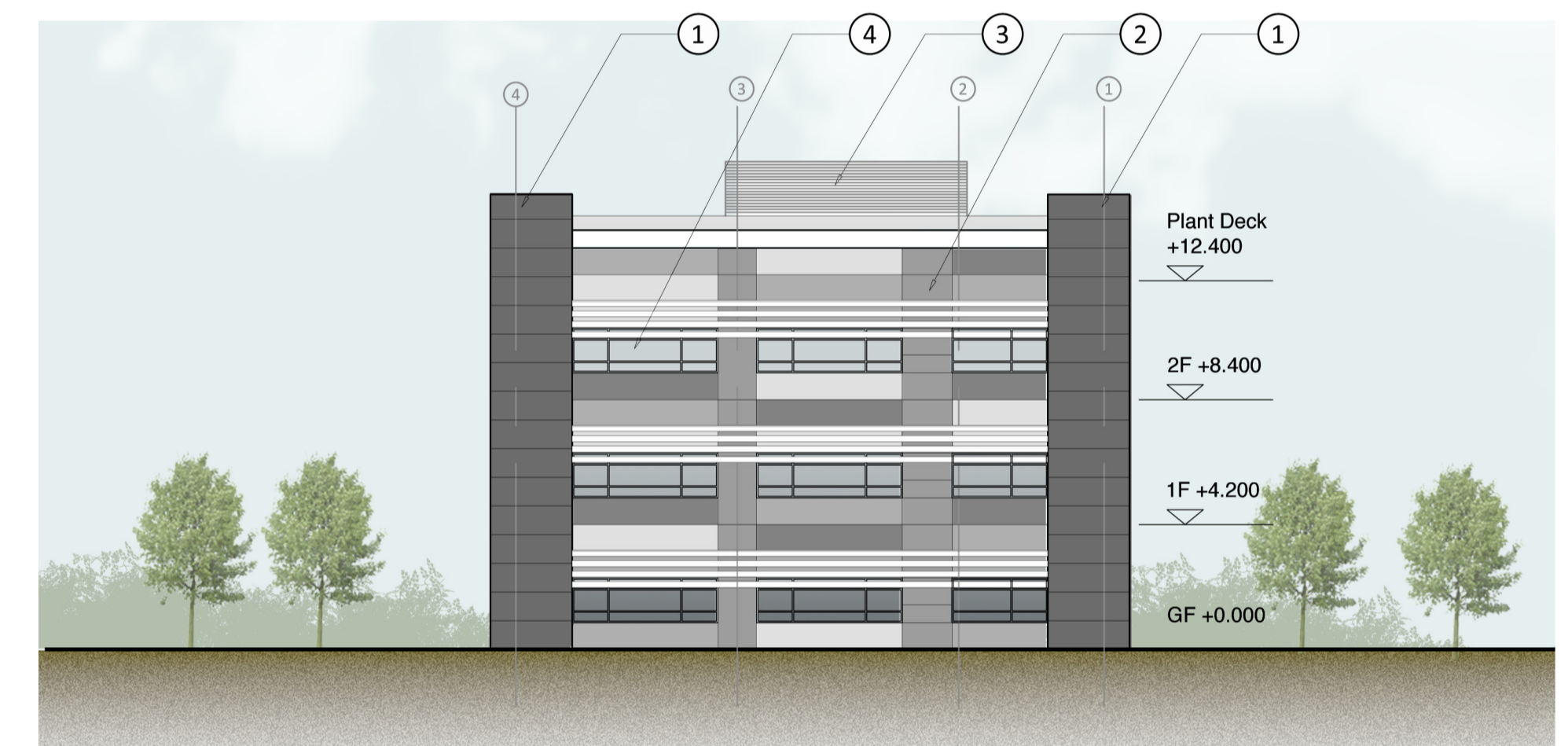
**North Elevation** 1:200 @ A1



**West Elevation** 1:200 @ A1



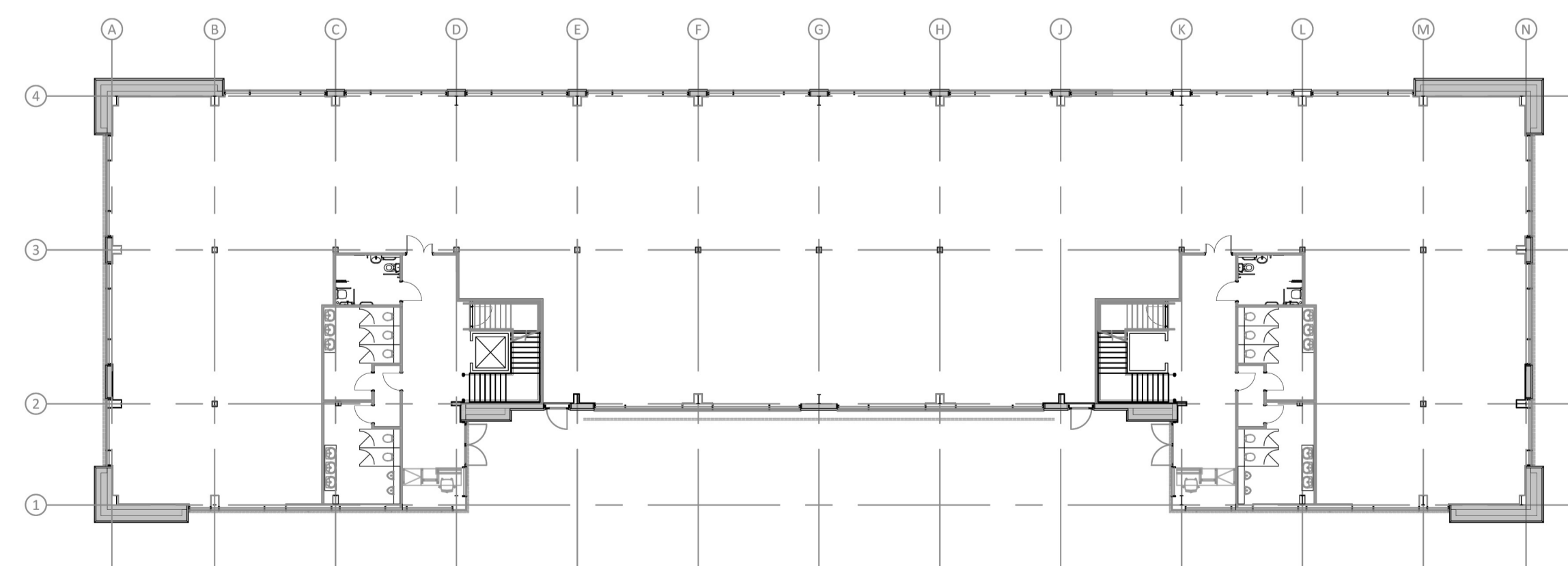
**South Elevation** 1:200 @ A1



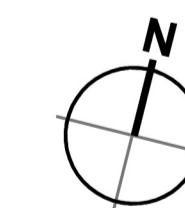
**East Elevation** 1:200 @ A1

**Materials Key:**

- ① Glass fibre reinforced concrete (or similar) cladding, colour to be dark grey.
- ② Kingspan (or similar) insulated Flat Panel cladding system with preformed corners, colours to be agreed.
- ③ Kingspan Long Span (or similar) Louvre profile insulated wall panel, colour to be agreed.
- ④ Fully thermally broken, polyester powder coated aluminium window system complete with factory sealed double glazed units, spandrel panels are to be Pilkington Spandrel Glass (or similar) opaque glass panels.
- ⑤ Aluminium fixed blade solar shading system to be suited to curtain wall system and incorporate brackets, flanges, supporting arms and connections to the curtain wall facade, colour to be agreed.



**Key Plan**



1m SCALE 1:200

rev | amendments | by | ckd | date

**Oxford Technology Park**  
Unit 1 - Elevations



Newark Beacon Innovation Centre, Calferton Way, Newark, Nottinghamshire NG24 2TN  
 o. +44 (0)1636 653027 | f. +44 (0)1636 653010 | e. info@umcarchitects.com

Drawing Status:	PLANNING
Drawn:	AS
Date:	06.06.2017
Scale:	1:200 A1
Drawing no:	Revision:
13045 RM1006	P0