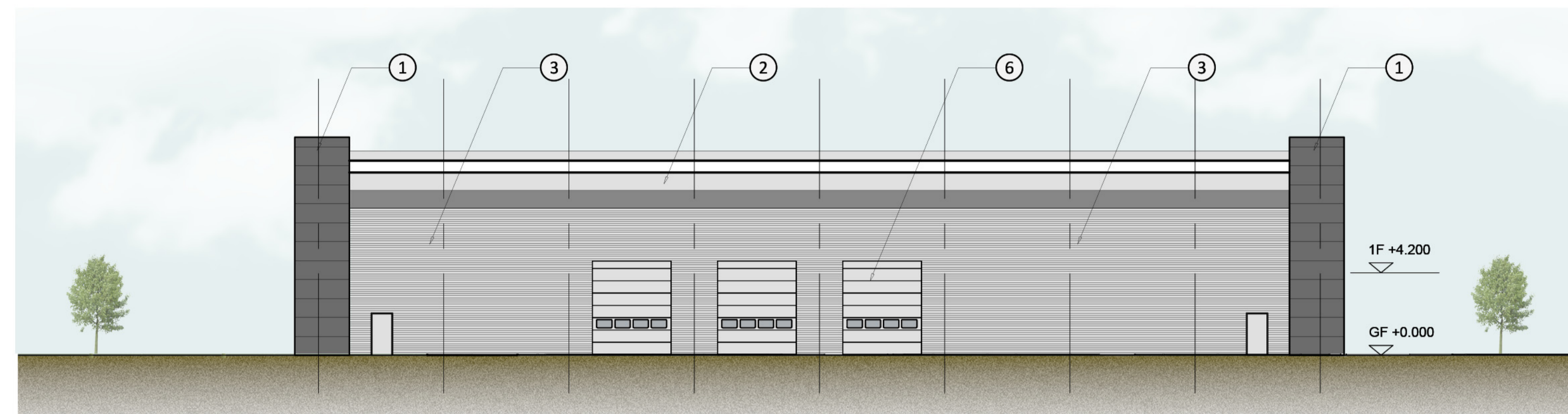
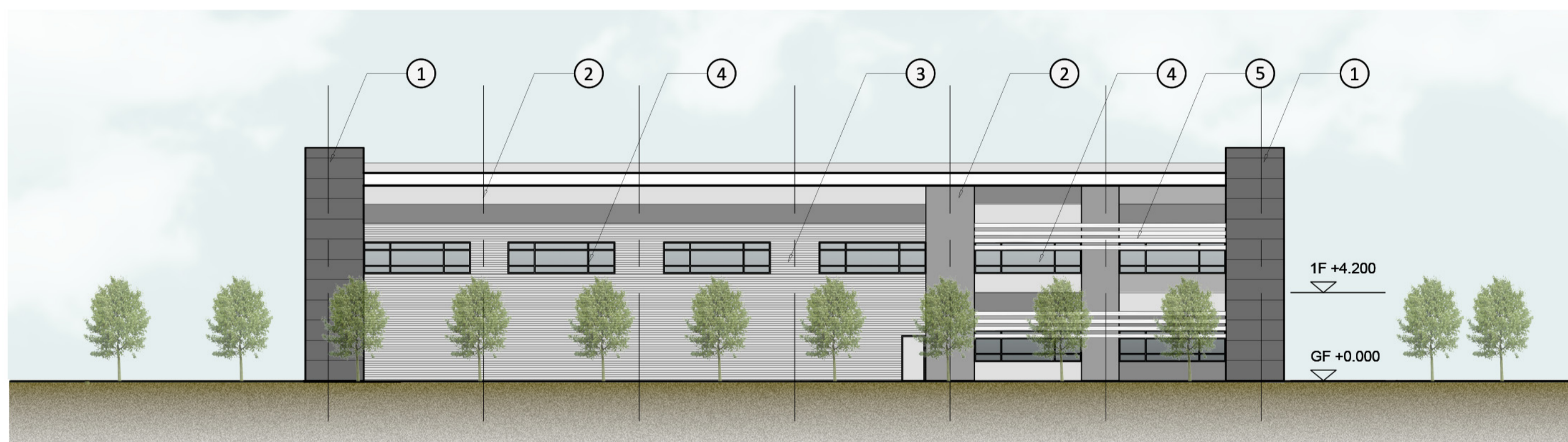


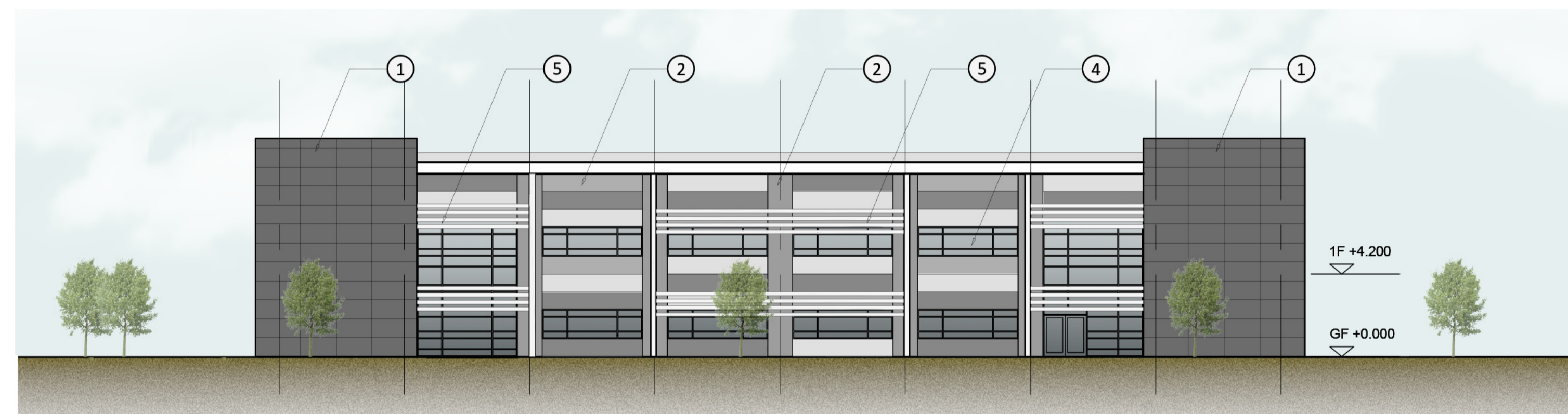
South Elevation 1:200 @ A1



East Elevation 1:200 @ A1



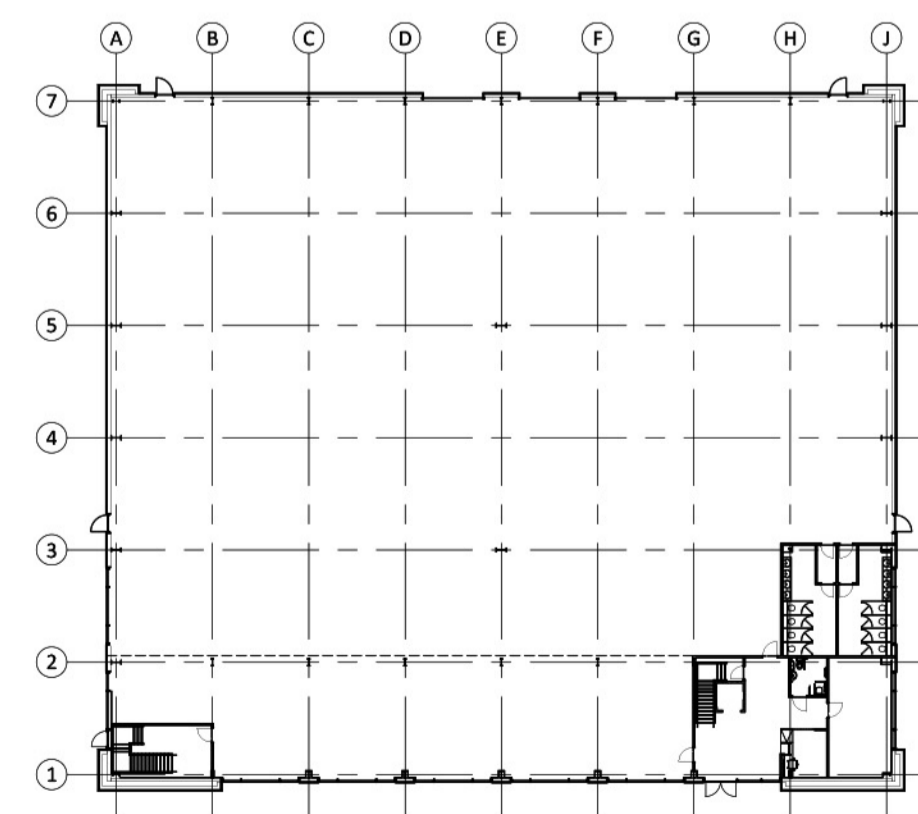
North Elevation 1:200 @ A1



West Elevation 1:200 @ A1

Materials Key:

- ① Glass fibre reinforced concrete (or similar) cladding, colour to be dark grey.
- ② Kingspan (or similar) insulated Flat Panel cladding system with preformed corners, colours to be agreed.
- ③ Kingspan Box Profile (or similar) insulated wall panel, colour to be agreed.
- ④ Fully thermally broken, polyester powder coated aluminium window system complete with factory sealed double glazed units, spandrel panels are to be Pilkington Spandrel Glass (or similar) opaque glass panels.
- ⑤ Aluminium fixed blade solar shading system to be suited to curtain wall system and incorporate brackets, flanges, supporting arms and connections to the curtain wall facade, colours to be agreed.
- ⑥ Colour coated insulated vertical shutter doors, colour to be agreed.



Key Plan

rev	amendments	by	ckd	date

Oxford Technology Park
 Unit 3 - Elevations



Newark Beach Innovation Centre, Callerata Way, Newark, Nottinghamshire NG24 2TN
 ☎ +44 (0)1636 653027 📠 +44 (0)1636 653010 🌐 info@umcarchitects.com

Drawing Status:	PLANNING
Drawn:	AS
Date:	06.06.2017
Scale:	1:200 A1
Drawing no:	Revision:
13045 RM1025	P0

