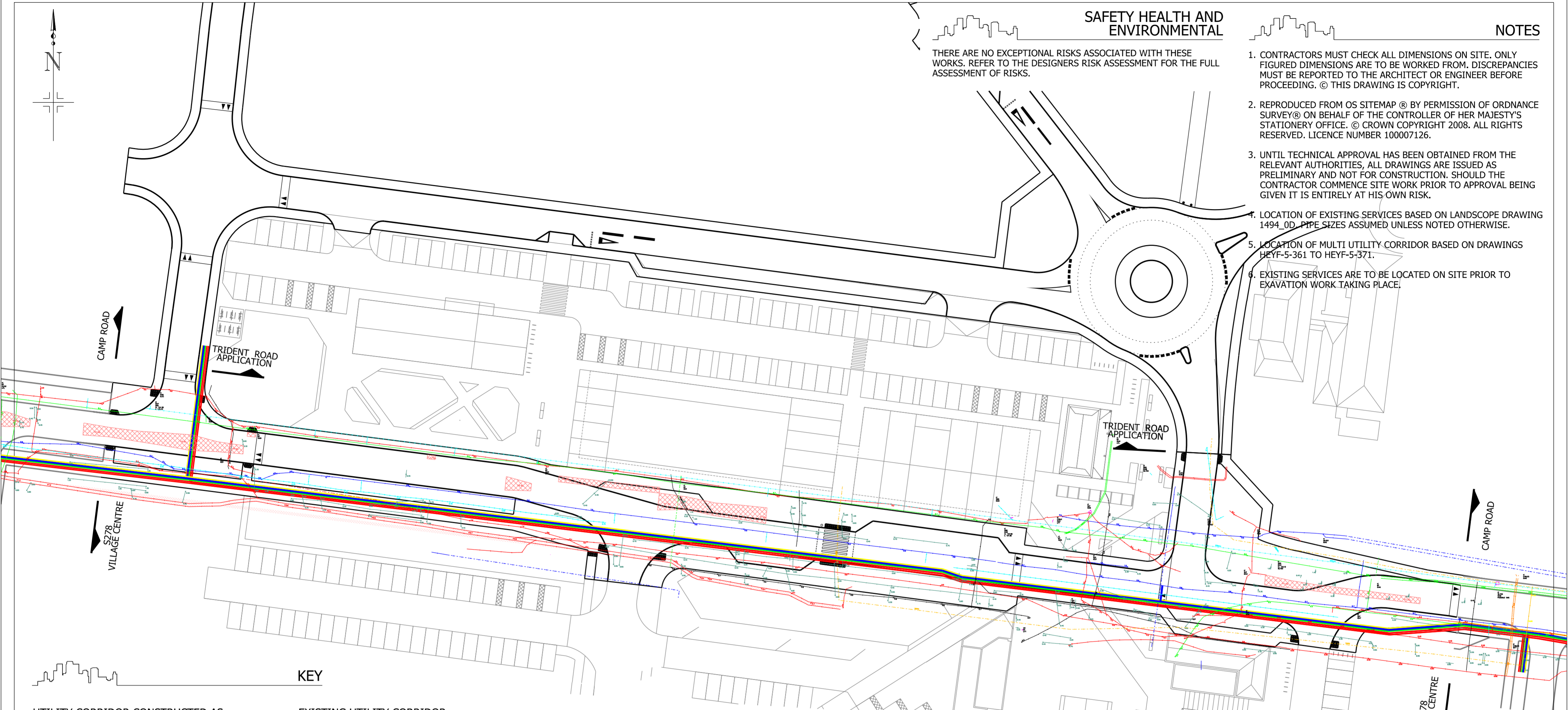
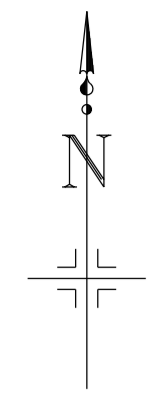


THERE ARE NO EXCEPTIONAL RISKS ASSOCIATED WITH THESE WORKS. REFER TO THE DESIGNERS RISK ASSESSMENT FOR THE FULL ASSESSMENT OF RISKS.

1. CONTRACTORS MUST CHECK ALL DIMENSIONS ON SITE. ONLY FIGURED DIMENSIONS ARE TO BE WORKED FROM. DISCREPANCIES MUST BE REPORTED TO THE ARCHITECT OR ENGINEER BEFORE PROCEEDING. © THIS DRAWING IS COPYRIGHT.
2. REPRODUCED FROM OS SITEMAP © BY PERMISSION OF ORDNANCE SURVEY © ON BEHALF OF THE CONTROLLER OF HER MAJESTY'S STATIONERY OFFICE. © CROWN COPYRIGHT 2008. ALL RIGHTS RESERVED. LICENCE NUMBER 100007126.
3. UNTIL TECHNICAL APPROVAL HAS BEEN OBTAINED FROM THE RELEVANT AUTHORITIES, ALL DRAWINGS ARE ISSUED AS PRELIMINARY AND NOT FOR CONSTRUCTION. SHOULD THE CONTRACTOR COMMENCE SITE WORK PRIOR TO APPROVAL BEING GIVEN IT IS ENTIRELY AT HIS OWN RISK.
4. LOCATION OF EXISTING SERVICES BASED ON LANDSCAPE DRAWING 1494_OD. PIPE SIZES ASSUMED UNLESS NOTED OTHERWISE.
5. LOCATION OF MULTI UTILITY CORRIDOR BASED ON DRAWINGS HEYF-5-361 TO HEYF-5-371.
6. EXISTING SERVICES ARE TO BE LOCATED ON SITE PRIOR TO EXAVATION WORK TAKING PLACE.



KEY

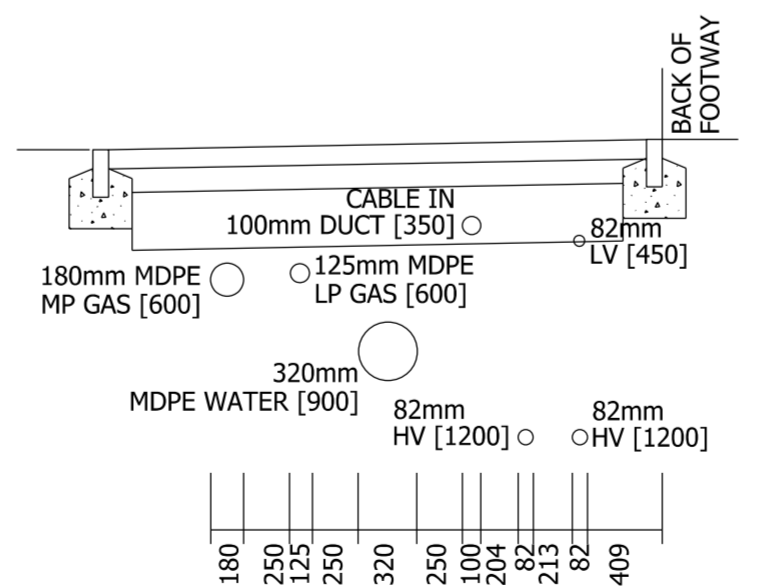
UTILITY CORRIDOR CONSTRUCTED AS PART OF PREVIOUS S278 APPLICATION

- ELECTRICITY HV
- ELECTRICITY LV
- CABLE TV/ COMMUNICATIONS
- - - GAS MP
- GAS LP
- WATER
- - - TELECOMMUNICATIONS

EXISTING UTILITY CORRIDOR

- $\times 0.8 / 0.8G$
- ELECTRICITY
- TELECOMS
- GAS
- CABLE TELEVISION
- WATER
- UNIDENTIFIED FROM SURVEY
- DUCT
- MISCELLANEOUS CABLES
- SURFACE WATER SEWER
- FOUL WATER SEWER
- UNIDENTIFIED BURIED ANOMALY DETECTED BY GPR WITH DEPTH SHOWN IN METRES

ORIGINAL PROPOSED ARRANGMENT OF SERVICES WITHIN MULTI UTILITY CORRIDOR IN A FOOTWAY



- NOTES:**
1. ORDER AND SIZE OF SERVICES IS BASED ON CLIENT/ GTC/ ALBION INFORMATION.
 2. WHERE SERVICES ARE WITHIN THE ROAD, THE COVER WILL BE INCREASED TO 600MM FOR CABLE, 750MM FOR LV AND 750MM FOR GAS.
 3. WHERE EXISTING LIVE SERVICES ARE ENCOUNTERED AT THE LEVEL OF THE MULTI UTILITY CORRIDOR SERVICES ARE TO BE DEEPEENED ACCORDINGLY.

REVISION	DESCRIPTION	DRAWN	CHECKED	DATE
PRELIMINARY	INFORMATION	TENDER	CONSTRUCTION	AS BUILT

WOODS HARDWICK
ARCHITECTS, ENGINEERS AND DEVELOPMENT CONSULTANTS

TITLE **CAMP ROAD UPPER HEYFORD**
DETAILS **VILLAGE CENTRE - S278 EXISTING UTILITY LAYOUT**

SCALE: 1:500 @ A2 DATE: FEB 2017 DRAWN: CG CHK: AT

Please consider the environment before printing this drawing
Filepath: F:\Engineer

15-17 GOLDINGTON ROAD
BEDFORD, MK40 3NH
T. +44 (0)1234 268862
FORT DUNLOP, FORT PARKWAY
BIRMINGHAM, B24 9FE
UNITED KINGDOM
T. +44 (0)121 6297700
MAIL@WOODSHARDWICK.COM
WWW.WOODSHARDWICK.COM

HEYF-5-231

