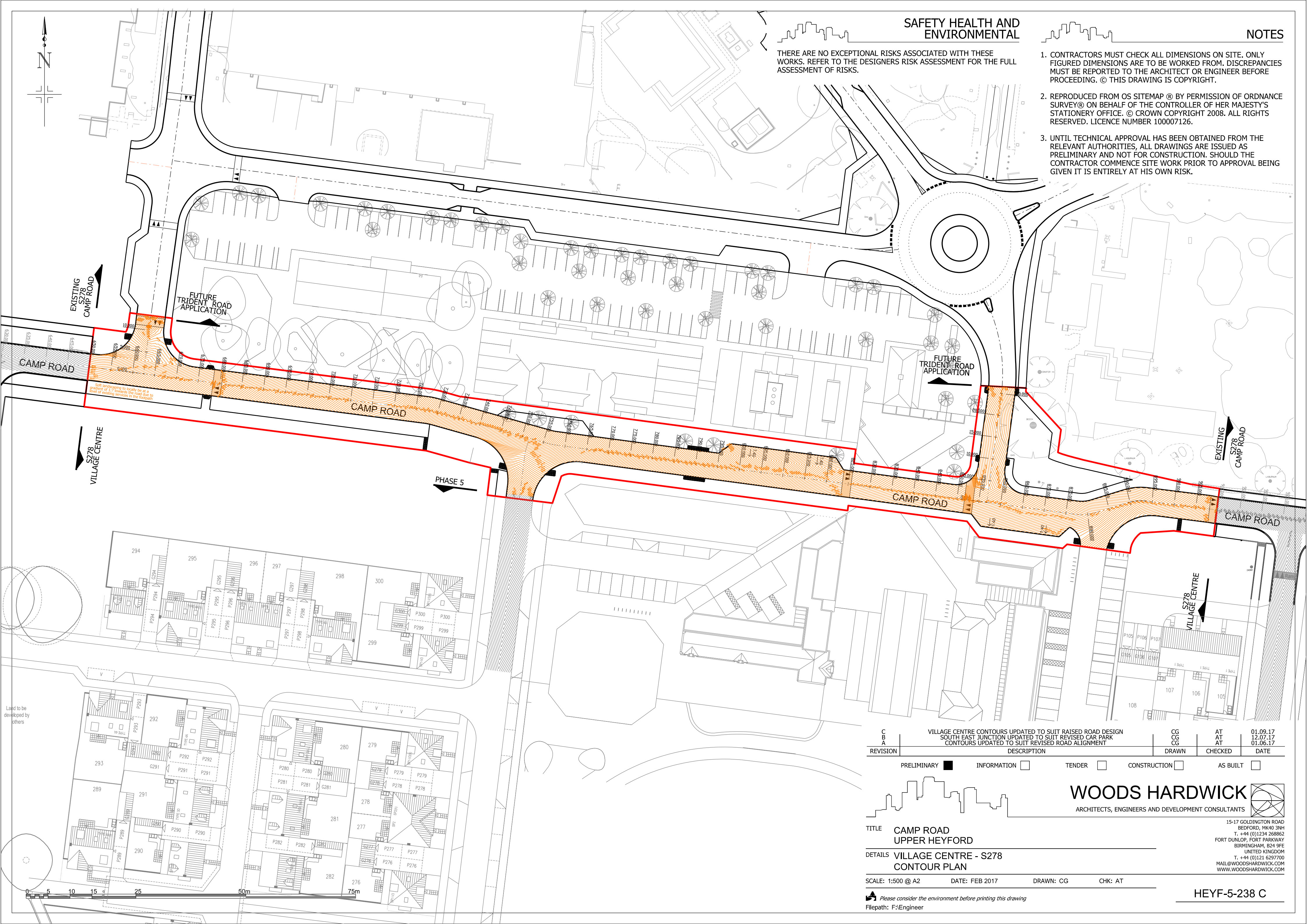


SAFETY HEALTH AND ENVIRONMENTAL

THERE ARE NO EXCEPTIONAL RISKS ASSOCIATED WITH THESE WORKS. REFER TO THE DESIGNERS RISK ASSESSMENT FOR THE FULL ASSESSMENT OF RISKS.

NOTES

1. CONTRACTORS MUST CHECK ALL DIMENSIONS ON SITE. ONLY FIGURED DIMENSIONS ARE TO BE WORKED FROM. DISCREPANCIES MUST BE REPORTED TO THE ARCHITECT OR ENGINEER BEFORE PROCEEDING. © THIS DRAWING IS COPYRIGHT.
2. REPRODUCED FROM OS SITEMAP ® BY PERMISSION OF ORDNANCE SURVEY® ON BEHALF OF THE CONTROLLER OF HER MAJESTY'S STATIONERY OFFICE. © CROWN COPYRIGHT 2008. ALL RIGHTS RESERVED. LICENCE NUMBER 100007126.
3. UNTIL TECHNICAL APPROVAL HAS BEEN OBTAINED FROM THE RELEVANT AUTHORITIES, ALL DRAWINGS ARE ISSUED AS PRELIMINARY AND NOT FOR CONSTRUCTION. SHOULD THE CONTRACTOR COMMENCE SITE WORK PRIOR TO APPROVAL BEING GIVEN IT IS ENTIRELY AT HIS OWN RISK.

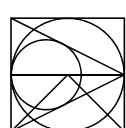


REVISION	DESCRIPTION	DRAWN	CHECKED	DATE
C	VILLAGE CENTRE CONTOURS UPDATED TO SUIT RAISED ROAD DESIGN	CG	AT	01.09.17
B	SOUTH EAST JUNCTION UPDATED TO SUIT REVISED CAR PARK	CG	AT	12.07.17
A	CONTOURS UPDATED TO SUIT REVISED ROAD ALIGNMENT	CG	AT	01.06.17

PRELIMINARY ☒ INFORMATION ☐ TENDER ☐ CONSTRUCTION ☐ AS BUILT ☐

WOODS HARDWICK

ARCHITECTS, ENGINEERS AND DEVELOPMENT CONSULTANTS



15-17 GOLDINGTON ROAD
BEDFORD, MK40 3NH
T. +44 (0)1234 268862
FORD DUNLOP, FORT PARKWAY
BIRMINGHAM, B24 9FE
UNITED KINGDOM
T. +44 (0)121 6297700
MAIL@WOODSHARDWICK.COM
WWW.WOODSHARDWICK.COM

TITLE CAMP ROAD
UPPER HEYFORD

DETAILS VILLAGE CENTRE - S278
CONTOUR PLAN

SCALE: 1:500 @ A2 DATE: FEB 2017 DRAWN: CG CHK: AT

Please consider the environment before printing this drawing
Filepath: F:\Engineer

HEYF-5-238 C