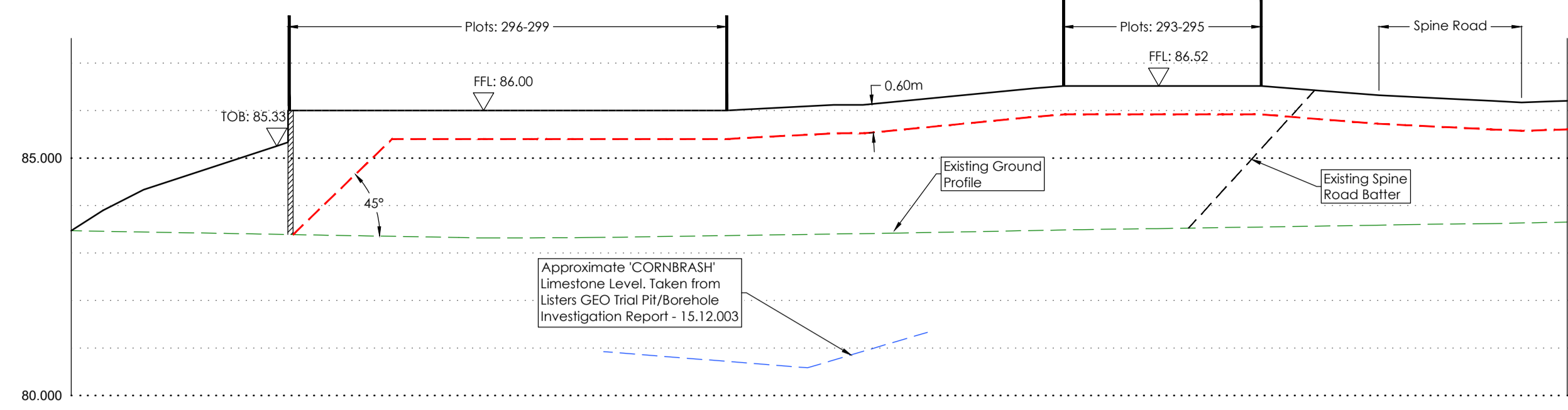




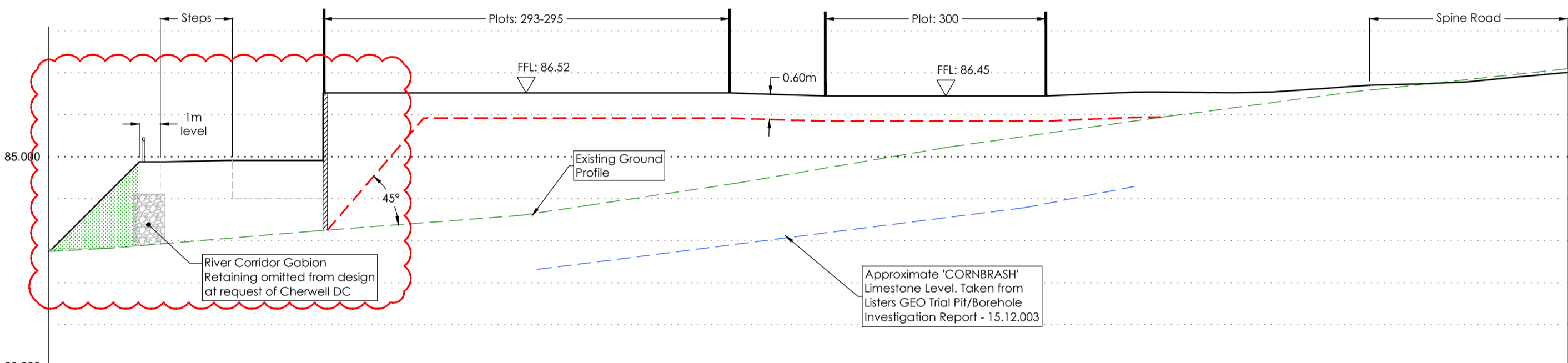
1:500 @ A1



CHAINAGE	0.000	1.345	5.000	10.000	15.000	16.315	20.000	22.415	25.000	30.000	35.000	36.041	40.000	45.000	50.000	55.000	60.000	62.977	
BRASH LEVEL							80.922	80.820	80.622	80.622	81.175	81.330							
PROPOSED LEVEL	83.897	84.654	86.000	86.000	86.000	86.000	86.000	86.000	86.006	86.006	86.202	86.444	86.444	86.520	86.520	86.325	86.199	86.205	
BASE LEVEL				83.326	83.321	83.348	83.384	83.421	83.469	83.509	83.547	83.586	83.622	83.651					

Section C-C

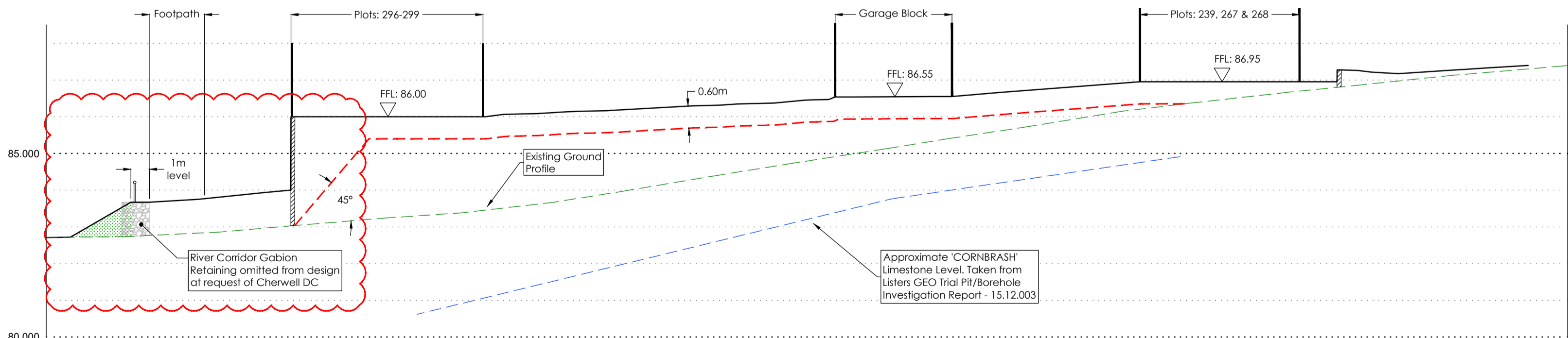
Scale: 1:200 Horizontal  
1:100 Vertical



CHAINAGE	0.000	5.000	10.000	15.000	20.000	22.285	25.000	30.000	35.000	40.000	45.000	50.000	51.750	55.000	60.000	65.000	70.000	72.375	
BRASH LEVEL						82.316	82.425	82.741	83.057	83.374	83.690	84.123	84.293						
PROPOSED LEVEL	82.745	84.890	84.000	86.520	86.520	86.520	86.520	86.520	86.480	86.450	86.450	86.501	86.534	86.534	86.599	86.729	86.900	87.008	
BASE LEVEL	82.745	82.908	83.117	83.317	83.506	83.788	84.162	84.558	84.983	85.377	85.729	86.070	86.401	86.687	86.987	87.086			

Section B-B

Scale: 1:200 Horizontal  
1:100 Vertical



CHAINAGE	0.000	5.000	10.000	15.000	20.000	20.181	25.000	30.000	35.000	40.000	45.000	50.000	55.000	60.000	61.697	65.000	70.000	75.000	80.000	80.629	82.767	
BRASH LEVEL					80.620	81.206	81.815	82.424	83.033	83.641	84.057	84.423	84.789	84.813								
PROPOSED LEVEL	82.712	83.820	85.300	86.000	86.000	86.063	86.159	86.291	86.392	86.540	86.580	86.578	86.550	86.550	86.950	86.950	86.950	87.219	87.376	87.395	87.390	
BASE LEVEL	82.712	82.750	82.884	83.099	83.284	83.520	83.861	84.275	84.683	85.074	85.471	85.890	86.235	86.523	86.789	87.048	87.275	87.376	87.395			

Section A-A

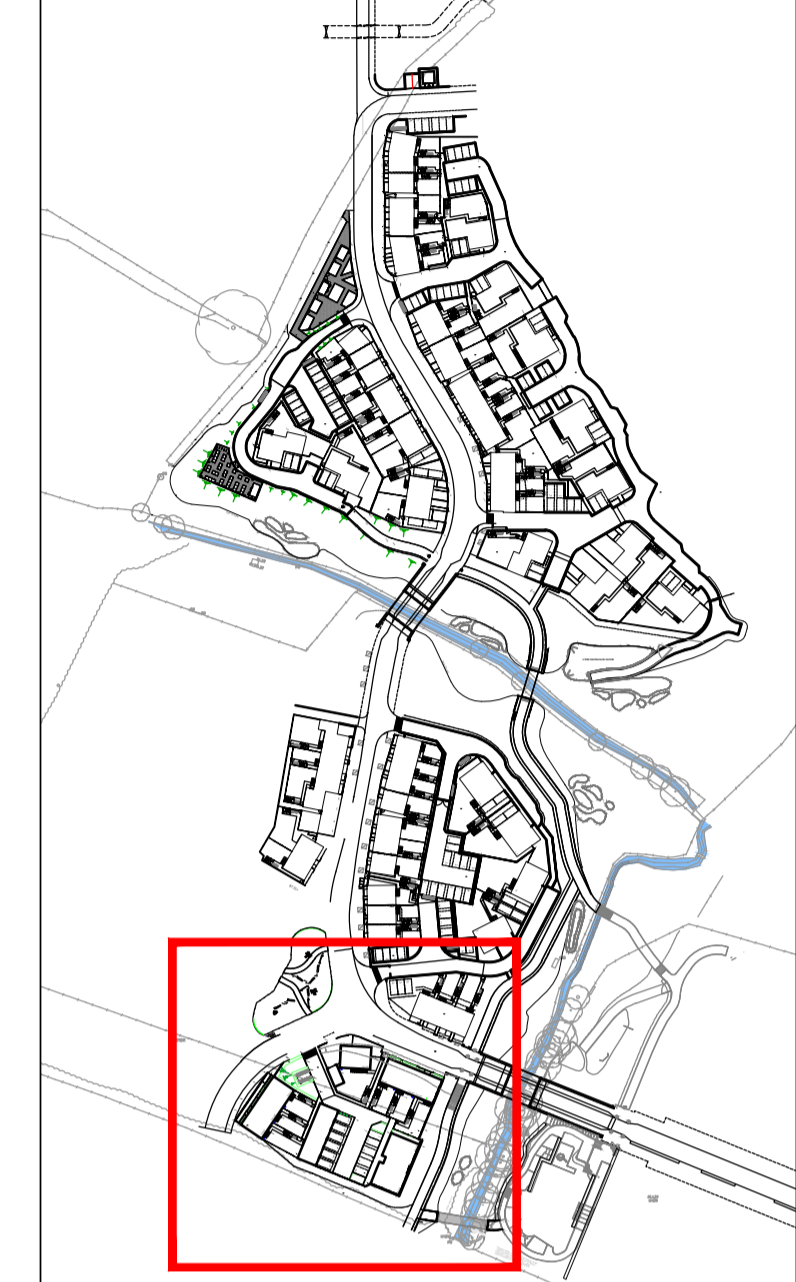
Scale: 1:200 Horizontal  
1:100 Vertical

**SURVEY INFORMATION**  
MK Surveys - 01908 545561  
DRG NUMBER: 17523 - Sheets 1-12  
DATE RECEIVED: 17/12/2014

**ARCHITECT SITE PLAN INFORMATION**  
PRP Architects - 020 7453 3464  
DRG NUMBER: AL6157C-3000-B/3100-D  
DATE RECEIVED: Sept 2016

**NOTES**

- All dimensions and levels are in metres unless otherwise noted
- This drawing is to be read in conjunction with the relevant Architects/Engineers drawings, specifications and CDM documentation
- This drawings has been produced electronically and may have been photo reduced or enlarged when copied. Work to figured dimensions only (DO NOT SCALE). All dimensions to be checked on site. Any errors or omissions to be reported to the engineer immediately.
- This drawing contains coloured lines / information that may not be clear if reproduced in black and white.



Sheet Arrangement (1:2500)

**Key:**

	Retaining Element
	River Corridor Retaining - Green Slope
	Typical Fill Level

P02	NJ	TST	Amendments following comments from Planning Authority	03/11/16
P01	SNN	TST	Initial issue	22/02/16
Rev	Drawn by	Chk'd by	Comments	Date

**DRAWING TITLE**  
Site Cross Sections  
Sheet 1 of 4

**PROJECT**  
Phase 2  
Bicester Eco Village  
Bicester  
Oxon

DESIGNED BY TST	DRAFTED BY SNN	APPROVED BY DJ
DATE 22/02/2016	STATUS <b>INFORMATION</b>	
SCALE As Noted		

**CLIENT**

JOB NUMBER 15-1859	DRAWING NUMBER 44-1	REVISION P02
-----------------------	------------------------	-----------------