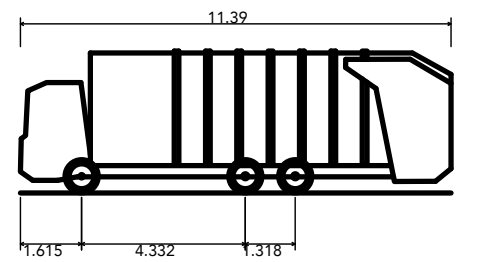


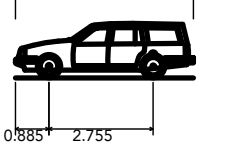


- REVISIONS:
- A. 2016-03-08. Minor landscaping amendments, garage added to plot 409 and hatching added to existing buildings at clients request. Tracking added to plots 374 & 405. PVA
 - B. 2016-04-14. Minor layout amendments, tracking unaffected. MED
 - C. 2016-07-18. Layout amended, tracking updated accordingly. DW/MED
 - D. 2016-08-11. Vehicle Tracking Layout amended to suit the newest revision D of 0521-PH8-102 Planning Layout. DW

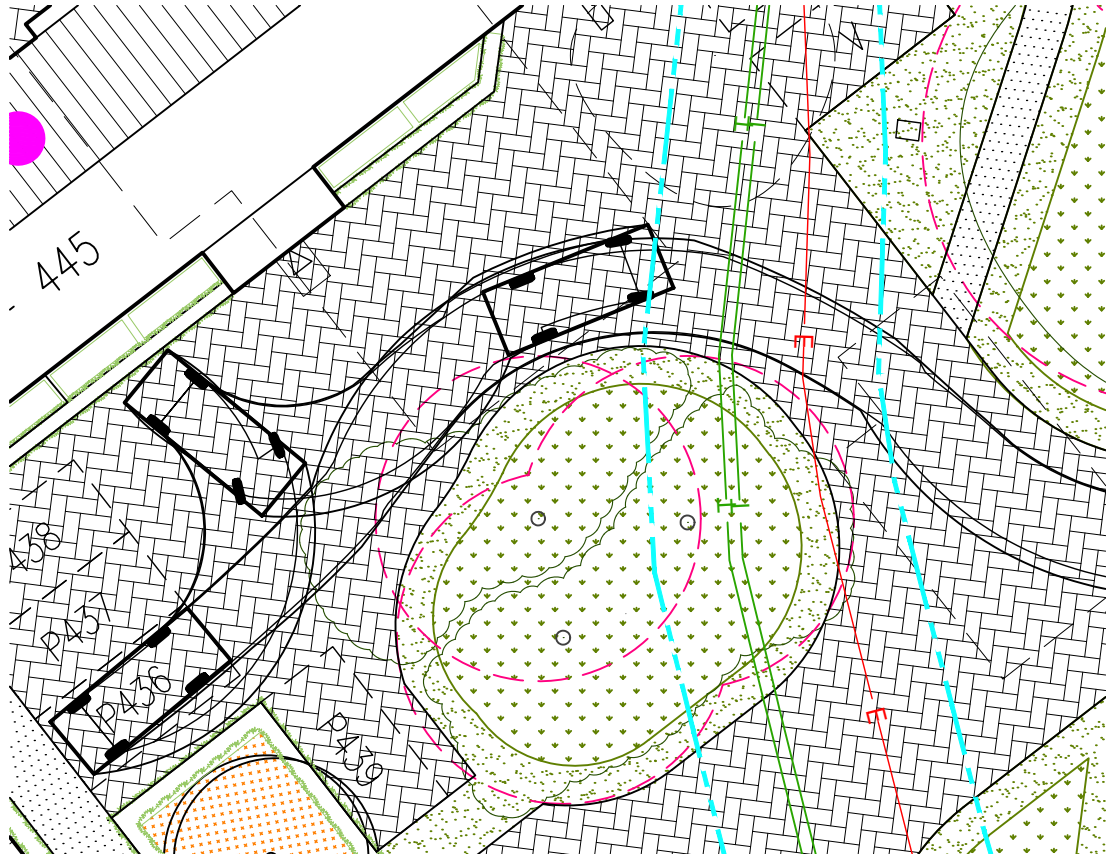
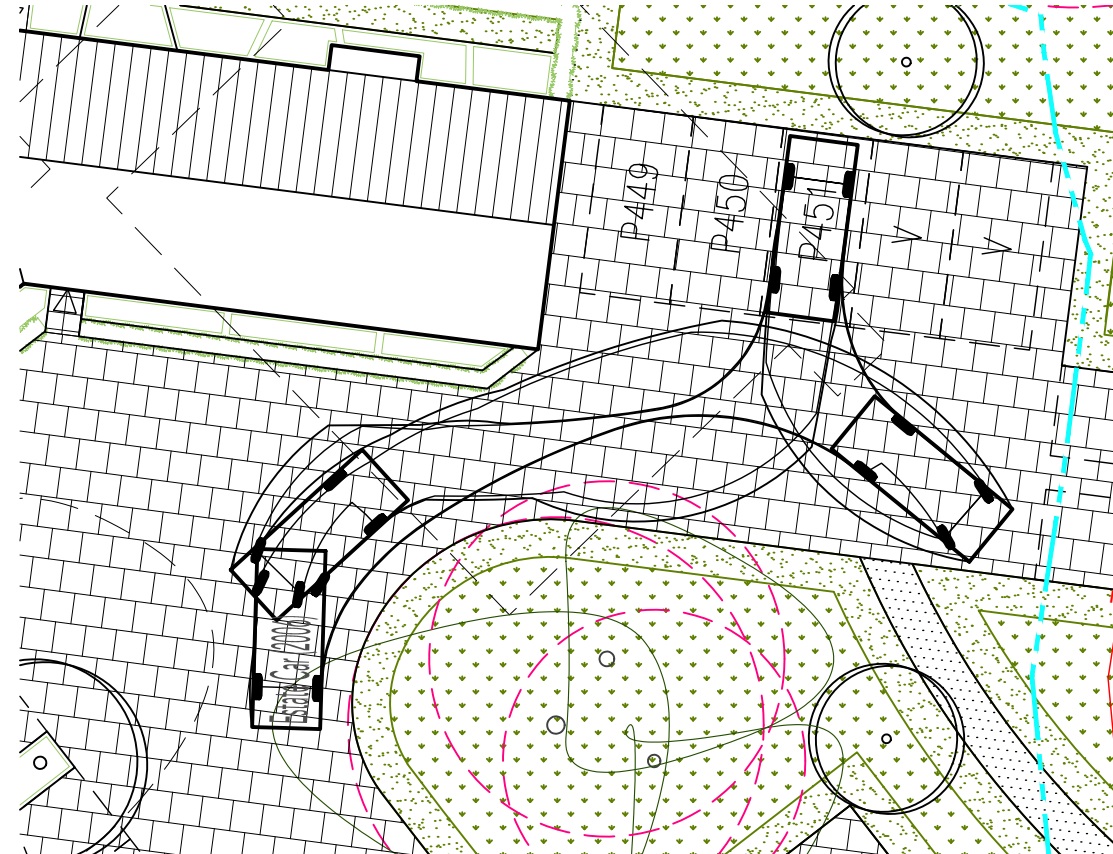
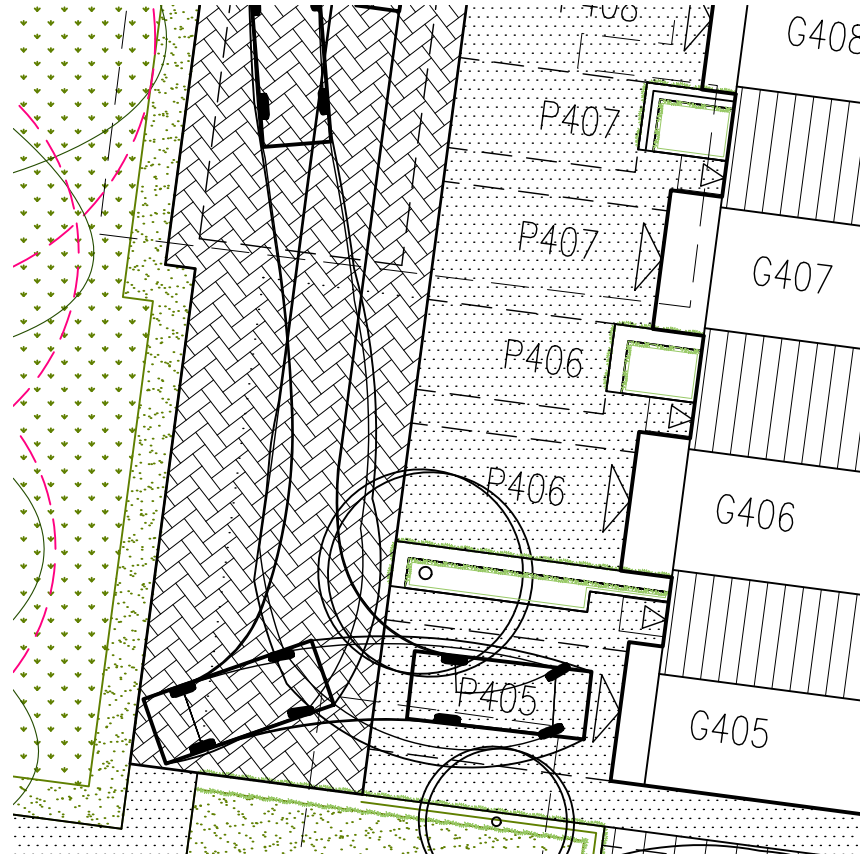
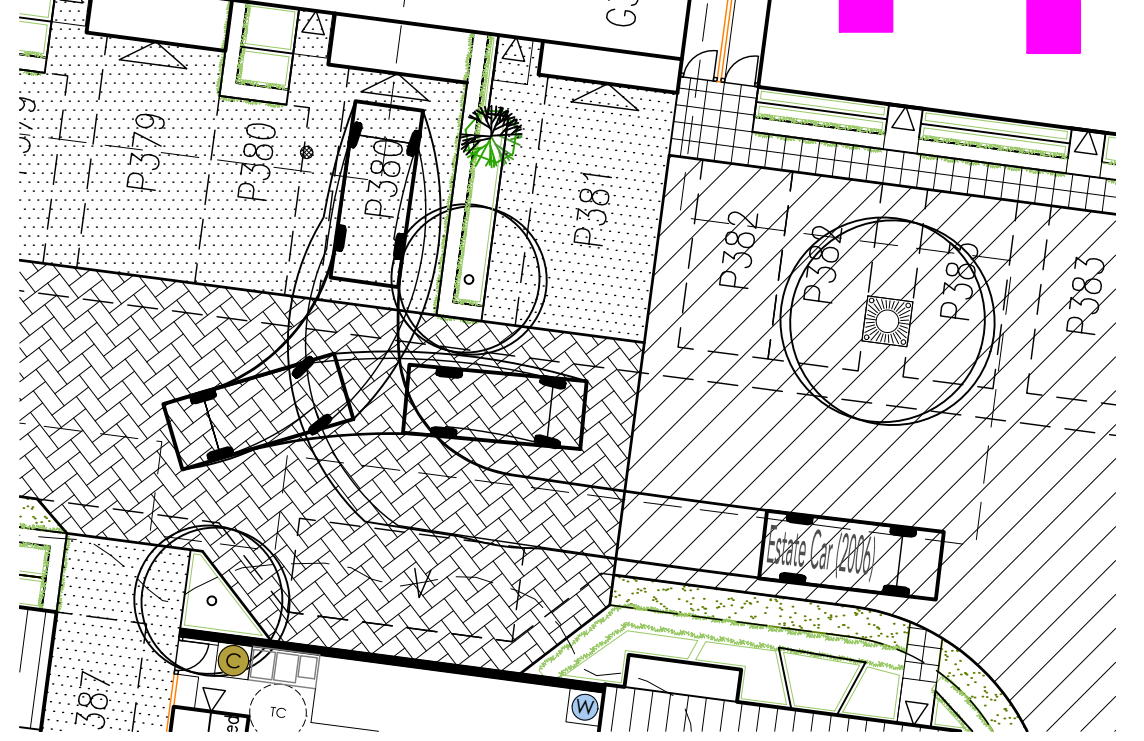
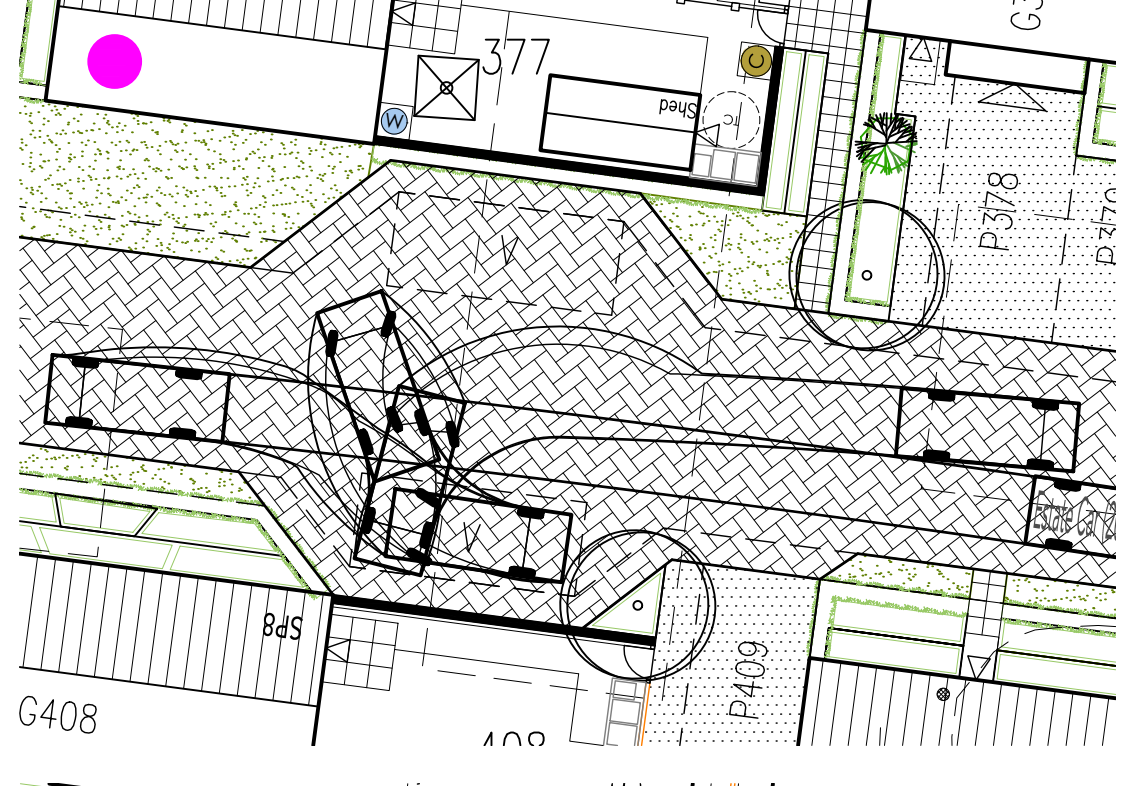
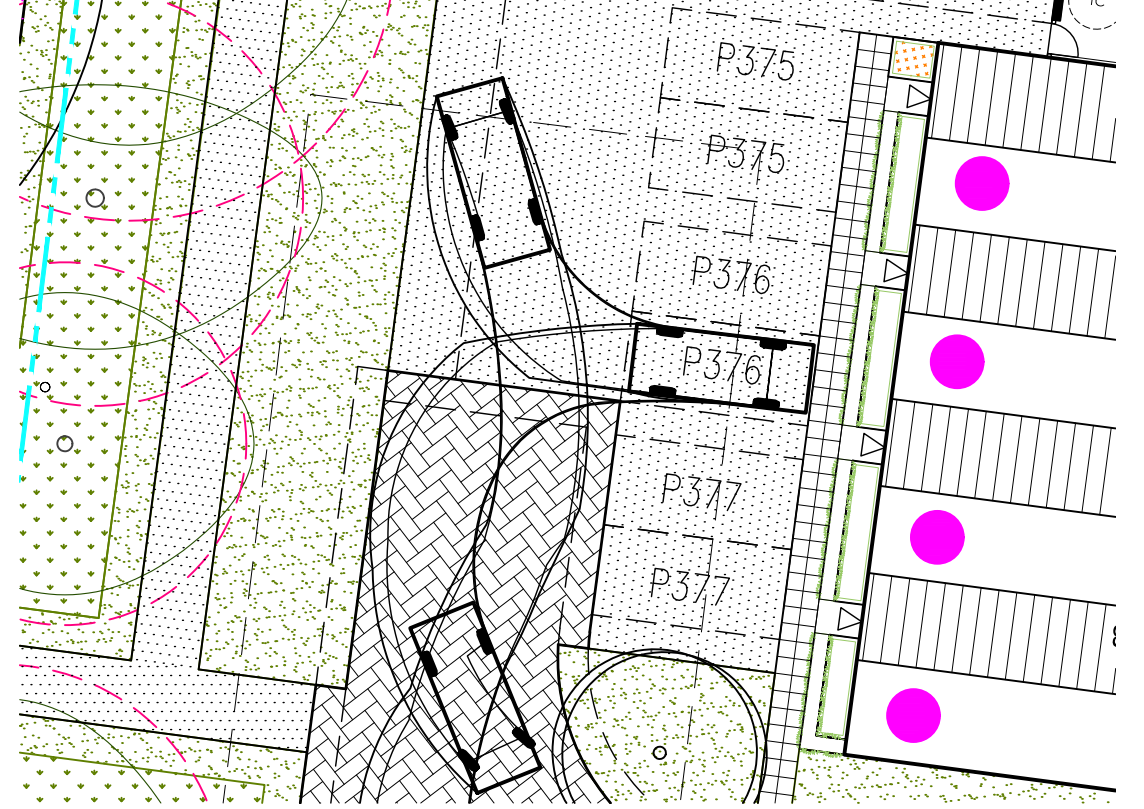
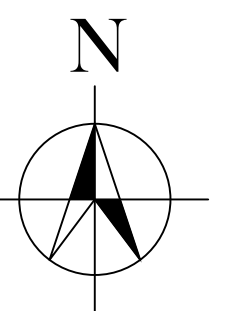
LEGEND



Dennis Eagle Olympus Smooth Body RCV EuroSW 6x2RS
 Overall Length 11.390m
 Overall Width 2.530m
 Overall Body Height 3.751m
 Min Body Ground Clearance 0.304m
 Track Width 2.500m
 Lock-to-lock time 4.00s
 Curb to Curb Turning Radius 7.500m



Estate Car (2006)
 Overall Length 4.710m
 Overall Width 1.804m
 Overall Body Height 1.442m
 Min Body Ground Clearance 0.207m
 Max Track Width 1.756m
 Lock-to-lock time 4.00s
 Curb to Curb Turning Radius 5.950m



VEHICLE TRACKING LAYOUT

SCALE: 1:200 @ A1

DATE: DECEMBER 2015
 DRAWN: DJE

DRAWING TITLE: VEHICLE TRACKING LAYOUT
 DRAWING NO: 0521-PH8-105