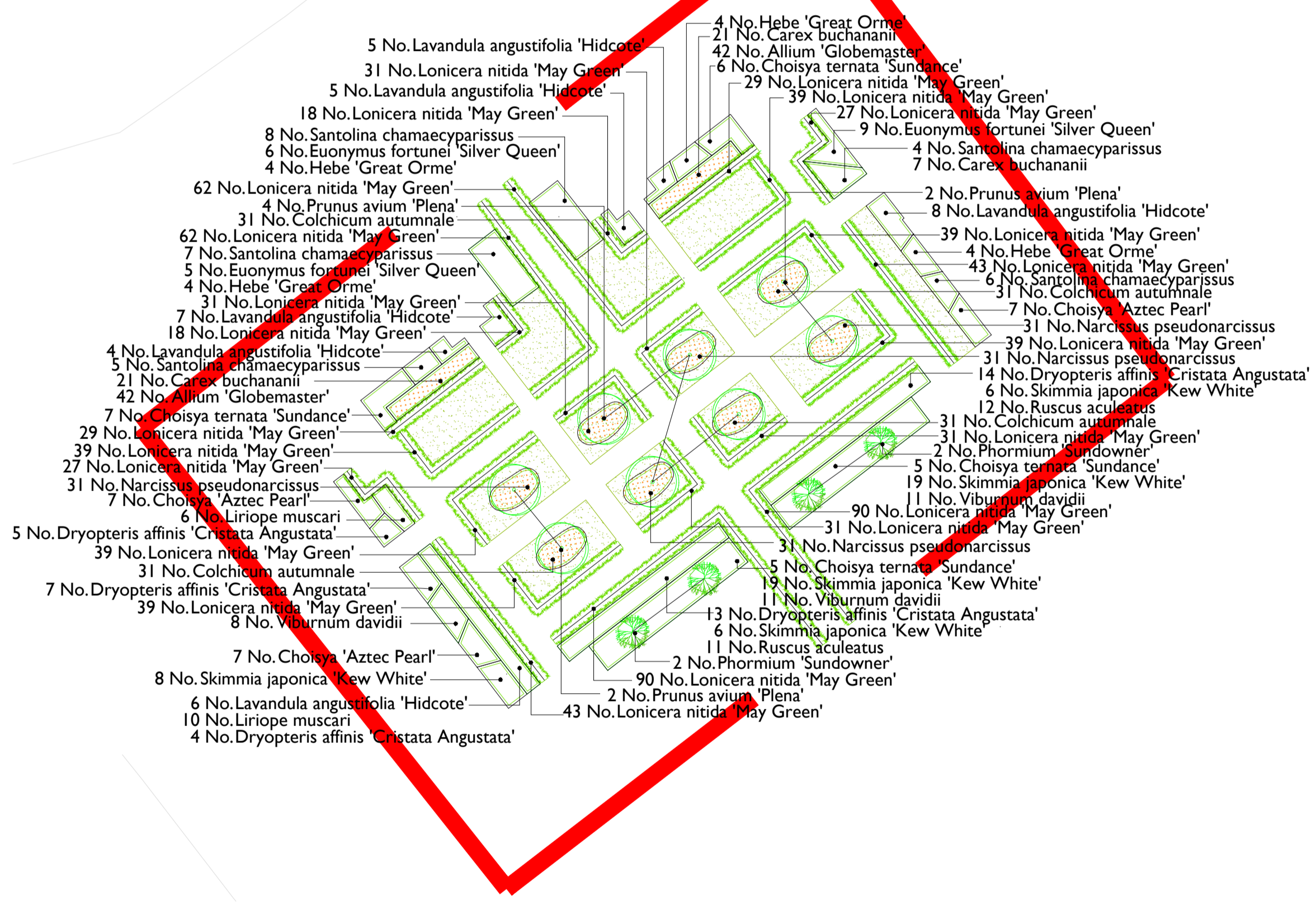
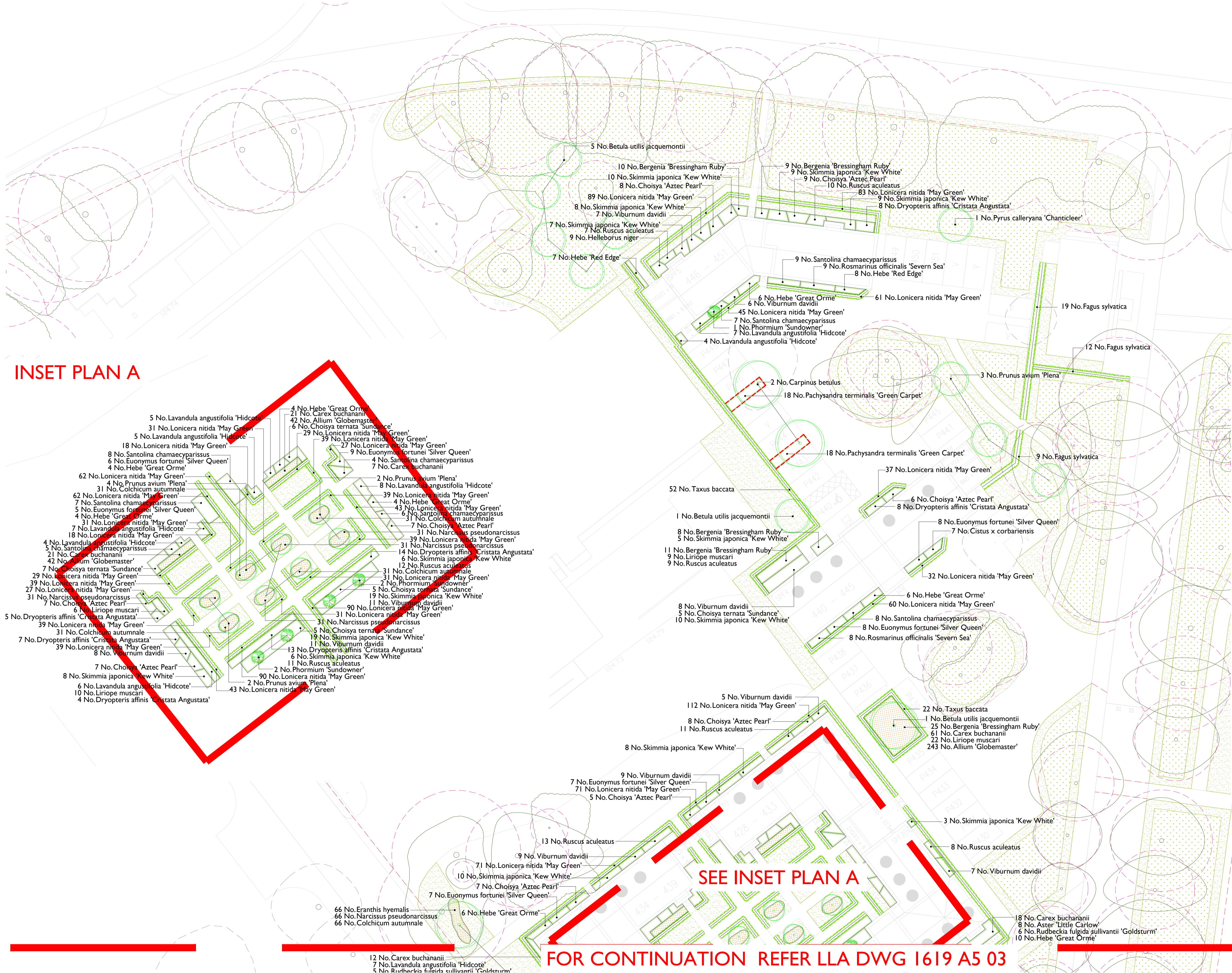


INSET PLAN A



SEE INSET PLAN A

FOR CONTINUATION REFER LLA DWG 1619 A5 02

FOR CONTINUATION REFER LLA DWG 1619 A5 03

- LEGEND**
- Existing Vegetation
 - Proposed root barrier (Green Blue Urban ReRoot 2000 or similar approved)
 - Proposed Trees in hard landscape
 - Proposed Trees in soft landscape
 - Proposed Specimens
 - Hedging
 - Shrub/herbaceous planting
 - Bulbous planting
 - Grass: Wildflower
 - Grass: Mown

GENERAL NOTES

This drawing is to be used for planting information only, and is subject to alteration through changes to the site layout or until approved by the area designer.

Any species substitution by the contractor must be verified with the Landscape Architect through the Job Architect.

This layout must be checked in accordance with NHBC Standards 2013 (Chapter 4.2 - Building Near Trees & Chapter 9.2 Drives, Paths and Landscaping) by the Regional Engineer prior to implementation.

Excavations: Contractors must ensure that they have full information relating to service and drainage positions before undertaking any excavations.

Root barriers to be used in association with tree planting adjacent to kerbs / services / footpaths etc. (Greenleaf ReRoot products or similar application, in accordance with manufacturer's instructions).

NOTES:

Please note all planting mixes should be planted as follows:
 Shrubs/Grasses to be planted in groups of 3-5 with herbaceous to be planted randomly throughout mix area.

Rev	Date	Description
A	22.01.16	Amendments to architects drawings
B	25.02.16	Amendments to architects drawings
C	29.02.16	LAP additions
D	29.02.16	Path added
E	10.03.16	Amendments to architects drawings
F	22.03.16	Amendments from comments
G	15.04.16	Architectural amendments
H	15.07.16	Architectural amendments
I	18.07.16	Architectural amendments
J	19.07.16	Architectural amendments
K	06.01.17	Tree amendments

Title: Detailed Planting Proposals
1 of 4

Project: Heyford Park, Bicester Parcel 8
 Client: Dorchester Living
 Date: January 2016
 Scale: 1:200@A1

Drawing No: 1619 A5 01 K
 Rev: 1

T: +44 (0)1295 647044 E: office@l2l.co.uk www.l2l.co.uk

© COPYRIGHT L2L Associates
 Information contained in this drawing is confidential and may not be used for any purpose other than that for which it is provided without prior written authority of L2L Associates.
 This drawing is copyright and may not be copied, altered or reproduced without the prior written authority of L2L Associates.