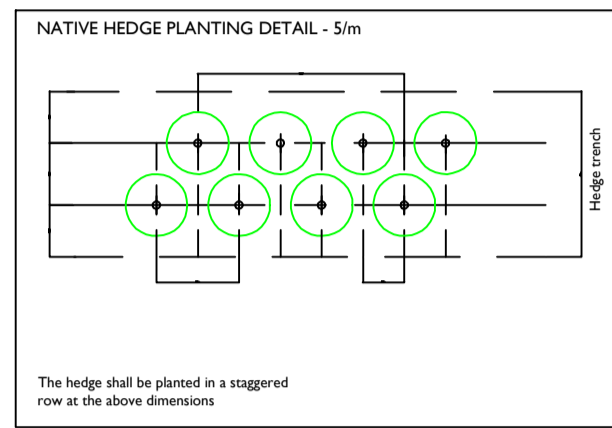
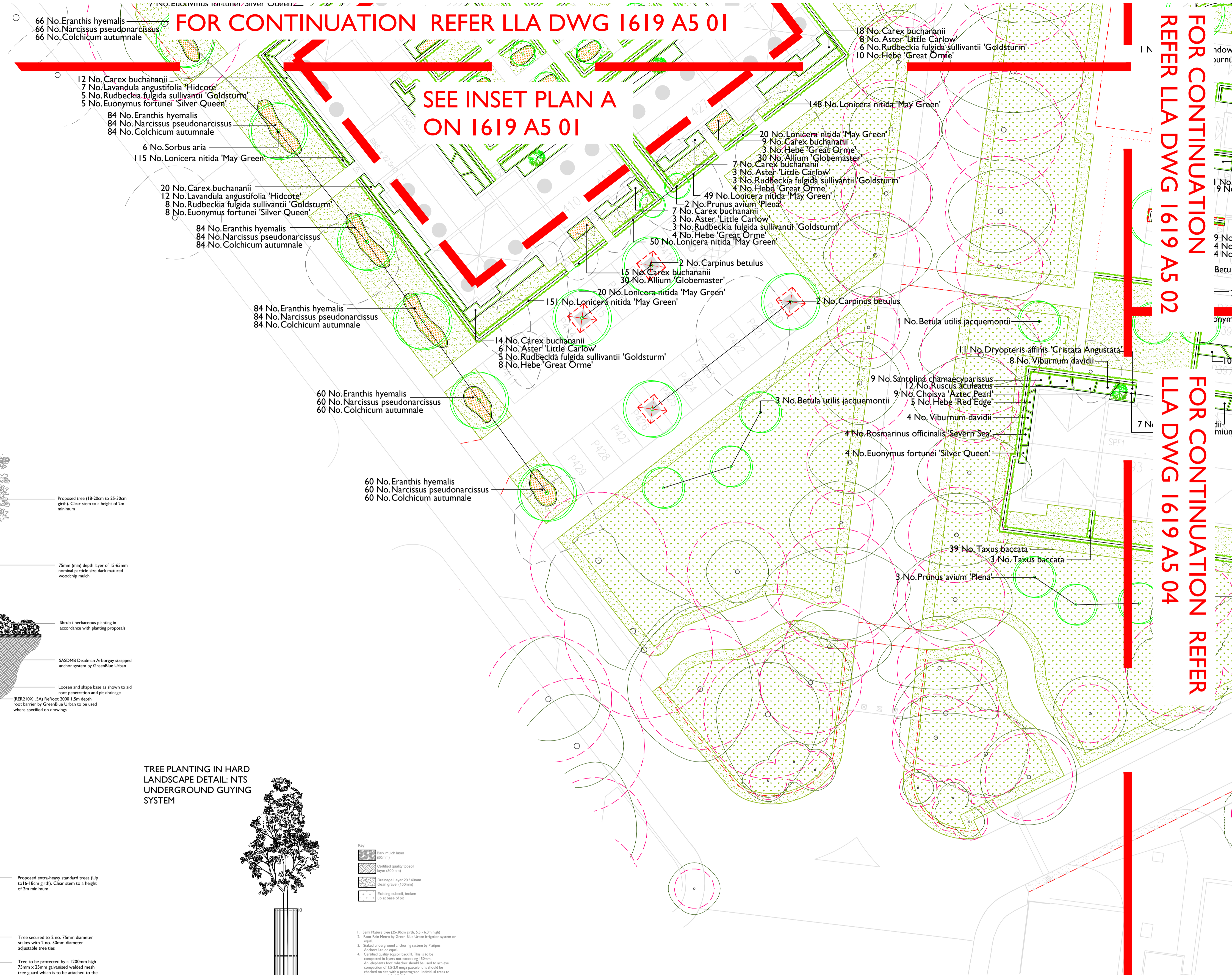


FOR CONTINUATION REFER LLA DWG 1619 A5 01

SEE INSET PLAN A ON 1619 A5 01

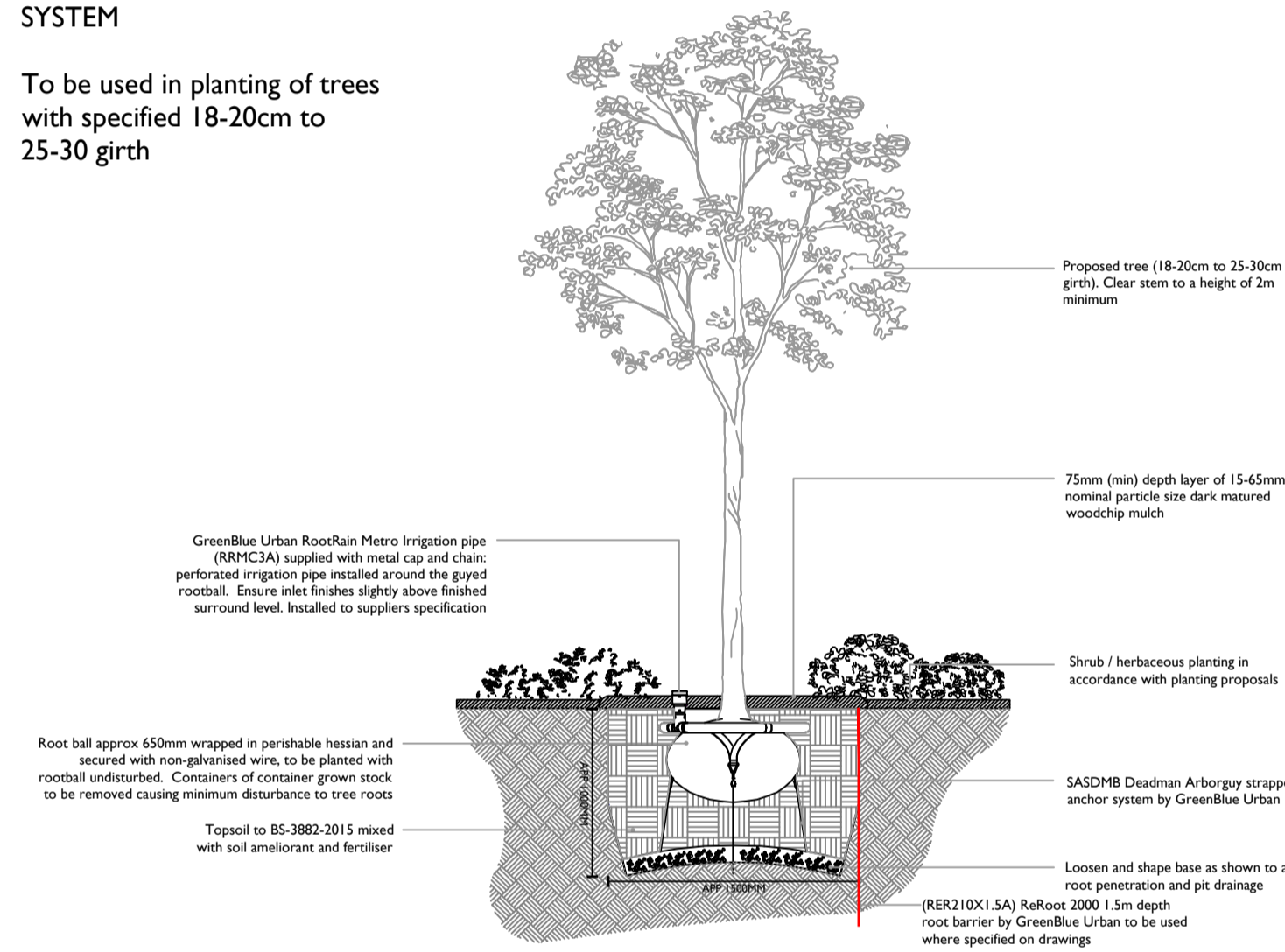
FOR CONTINUATION REFER LLA DWG 1619 A5 02

FOR CONTINUATION REFER LLA DWG 1619 A5 04



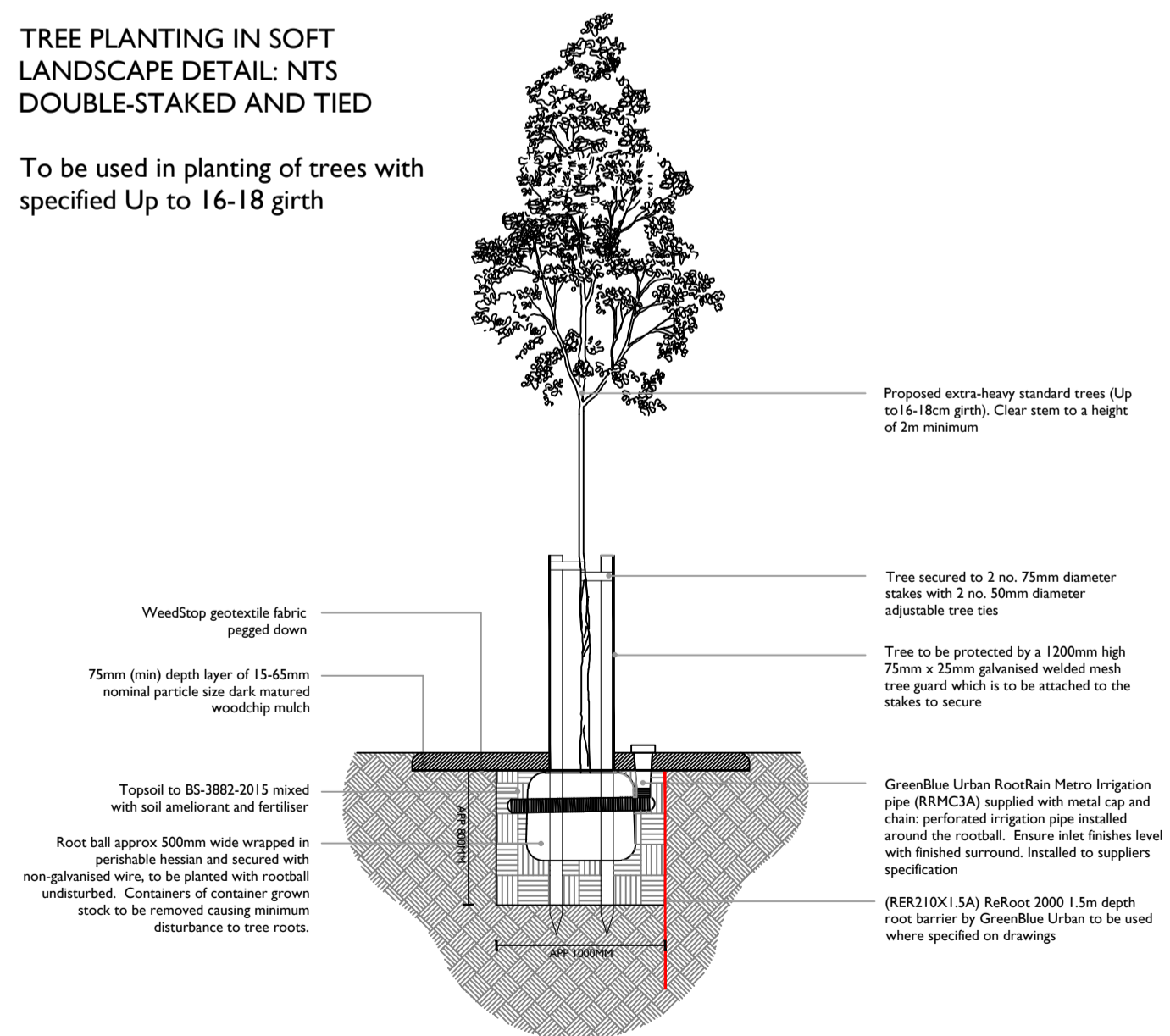
TREE PLANTING IN SOFT LANDSCAPE DETAIL: NTS UNDERGROUND GUYING SYSTEM

To be used in planting of trees with specified 18-20cm to 25-30 girth

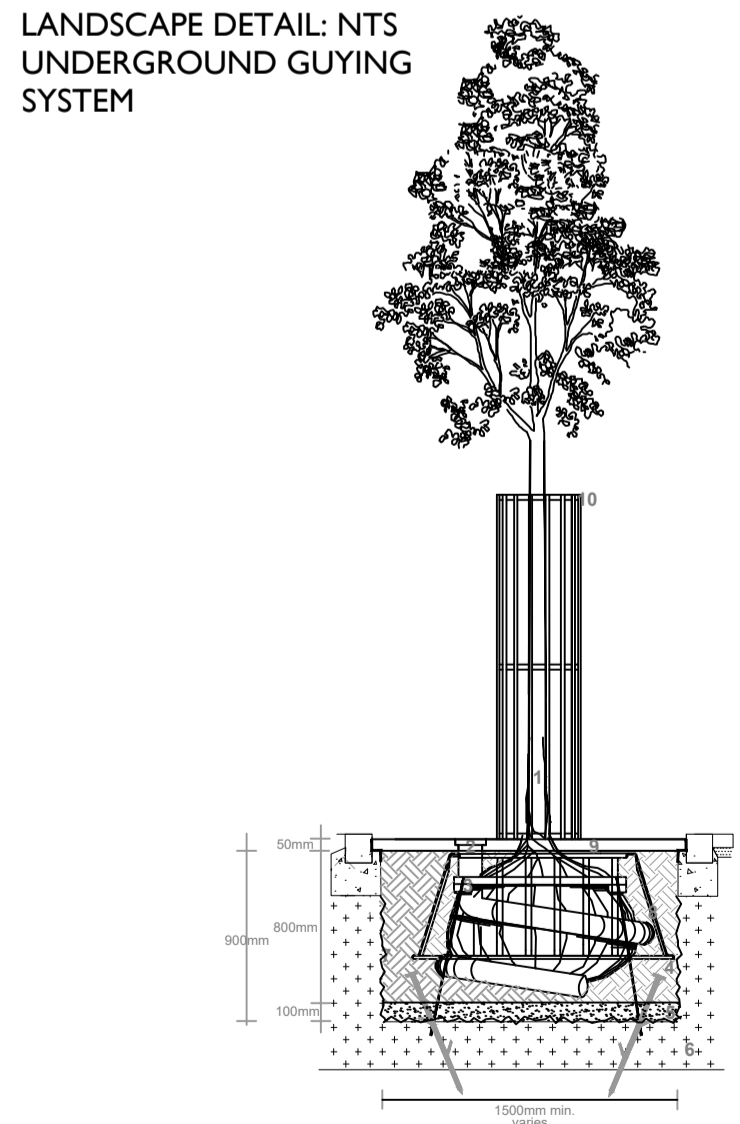


TREE PLANTING IN SOFT LANDSCAPE DETAIL: NTS DOUBLE-STAKED AND TIED

To be used in planting of trees with specified Up to 16-18 girth

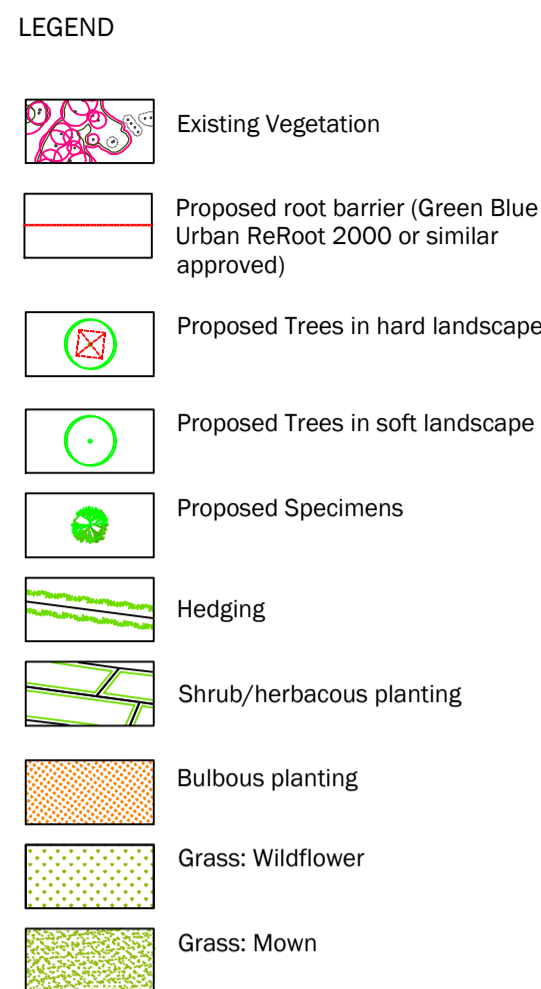


TREE PLANTING IN HARD LANDSCAPE DETAIL: NTS UNDERGROUND GUYING SYSTEM



1. Semi Mature tree (25-30cm girth, 4.5 - 6.0m high)
2. Root Rain Metro by Green Blue Urban irrigation system or equal
3. Dated underground anchoring system by Platypus Anchor Ltd or equal
4. Certified quality topsoil backfill. This is to be compacted to 95% proctor maximum (95mm). An 'optimum floor' which should be used to witness compression of 15.0-20mm depth. Individual trees to be planted in a 1.0m dia hole.
5. Drainage layer: 100mm depth - 20/40mm Ø clean gravel
6. Existing subsoil broken up at base of pit
7. Joint edges of all prior to building
8. Root barrier system such as Green Blue Urban Root Barrier 600/1000 installed per manufacturer's instructions
9. 120mm x 120mm galvanized medium duty frame, containing a 75mm thick Arborguy surface layer, finished flush with the top of the frame. (Pit size: 400mm square, set on wet-cast concrete with uncracked joints)
10. C16 Street Furniture type 1150 (see spec) 1800mm high secured to tree grille with applied string. Finish to match grille. All metal work to match site wide RAL colour.

\*Additional linear root barrier (Green Blue Urban RaRooc 600) to be used where service fall within 2 metres of tree root spread area



**GENERAL NOTES**

This drawing is to be used for planting information only, and is subject to alteration through changes to the site layout or until approved by the area designer.

Any species substitution by the contractor must be verified with the Landscape Architect through the Job Architect.

This layout must be checked in accordance with NHBC Standards 2013 (Chapter 4.2 - Building Near Trees & Chapter 9.2 Drives, Paths and Landscaping) by the Regional Engineer prior to implementation.

Excavations: Contractors must ensure that they have full information relating to service and drainage positions before undertaking any excavations.

Root barriers to be used in association with tree planting adjacent to kerbs / services / footpaths etc. (Greenleaf ReRoot products or similar application, in accordance with manufacturer's instructions).

NOTES:  
Please note all planting mixes should be planted as follows:  
Shrubs/Grasses to be planted in groups of 3-5 with herbaceous to be planted randomly throughout mix area.

Rev	Date	Description
A	22.01.16	Amendments to architects drawings
B	25.02.16	Amendments to architects drawings & LAP Proposals
C	10.03.16	Amendments to architects drawings
D	22.03.16	Amendments from comments
E	15.04.16	Architectural amendments
F	15.07.16	Architectural amendments
G	18.07.16	Architectural amendments
H	19.07.16	Architectural amendments
I	15.11.16	Tree specifications updated in relation to condition 6.
J	06.01.17	Tree amendments

Title: Detailed Planting Proposals 3 of 4  
 Project: Heyford Park, Biester Parcel 8 Dorchester Living  
 Client: Dorchester Living  
 Date: January 2016  
 Scale: 1:200@A1  
 Drawing No: 1619 A5 03 J  
 Rev:

T: +44 (0)1279 647044 E: office@icake.com www.icake.com

ICAKE Ltd. All rights reserved. Information contained in this drawing is confidential and may not be used for any purpose other than that for which the drawing is supplied without prior written authority of ICAKE. All other rights reserved. This drawing is copyright and may not be copied or reproduced without the prior written authority of ICAKE.

BSL Mapping: Reproduced from Ordnance Survey map data by permission of Ordnance Survey map data © Crown Copyright and the Controller of Her Majesty's Stationery Office, 2016. Ordnance Survey Licence No. 1000029000. This drawing may contain information and/or mapping from a number of sources and its accuracy should be verified on site.

