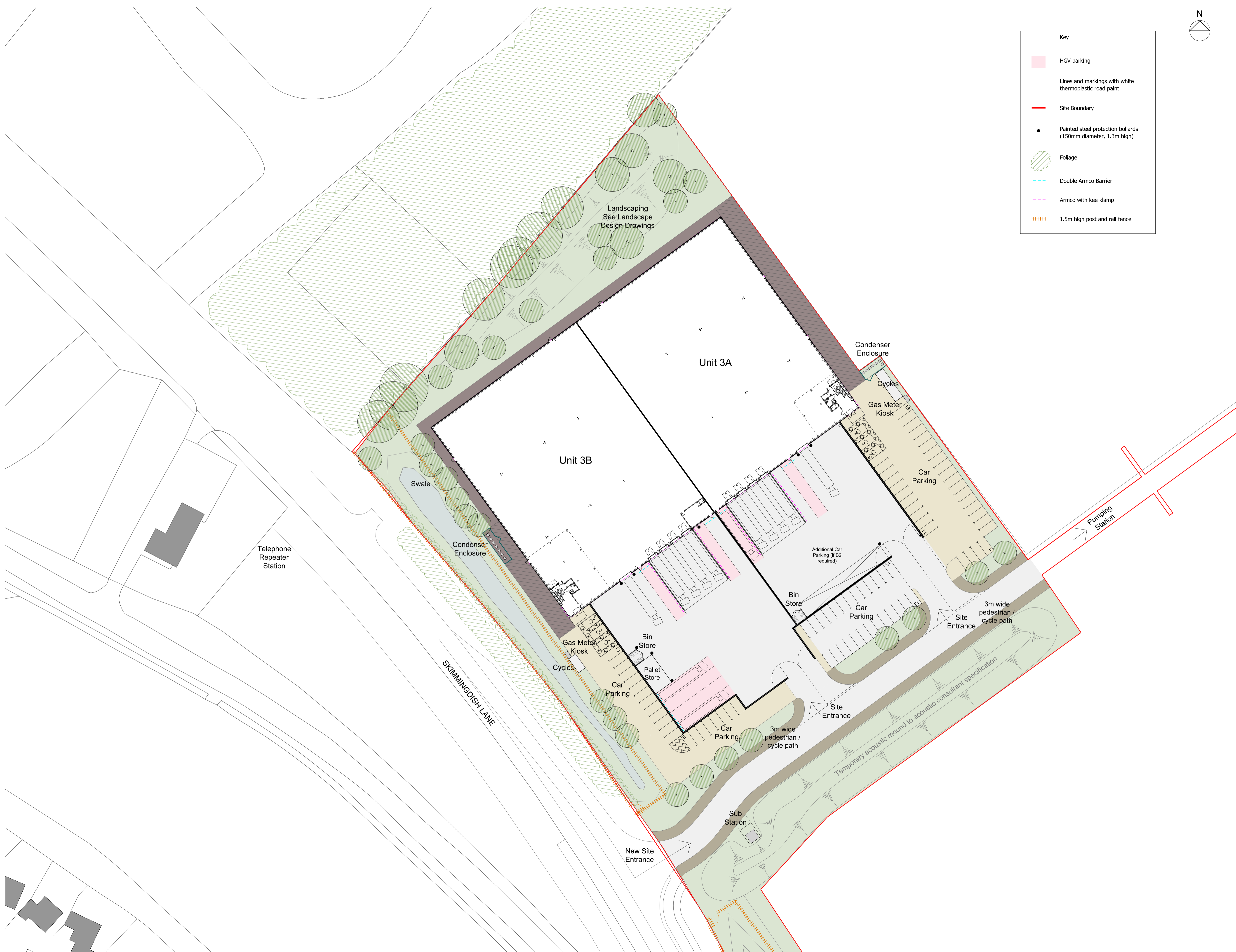


Key	
	HGV parking
	Lines and markings with white thermoplastic road paint
	Site Boundary
	Painted steel protection bollards (150mm diameter, 1.3m high)
	Foliage
	Double Armco Barrier
	Armco with kee klamp
	1.5m high post and rail fence



G	Condenser(s), Gas Kiosks + Sub-Station integrated. Landscaping moved to east of units, open area rail fence to parking(s) and armco barriers to parking area added. Parking bollards car parking added to site + new landscaping	SM	11.04.18
F	Canopy and landscape updated	CG	29.09.17
E	Access road updated, Lorry turning added.	SM	20.07.17
D	Planning Issue - Internal setting out and car parking updated.	SM	12.06.17
C	Planning Issue	AS	09.06.17
B	M&E details added to site	AS	07.06.17
A	Gates and fence revised, site layout updated	AS	01.06.17
Rev	Description	Chkd	Date

Peer House
8 -14 Verulam Street
London WC1X 8LZ
tel +44(0)20 7400 2120
enquiries@cornisharchitects.com
www.cornisharchitects.com

cornisharchitects

Project
**LINK 9 - SKIMMINGDISH LANE
BICESTER
PLOT 3**

Orig Title
**Site Plan at ground floor level
As Proposed**

Status
PLANNING

Scale
1:500 @ A1

Date
22/05/2017

Orig No
17007 / TP / 010

Rev
G