



31 Carswell
 T1—Sycamore—Remove
 to ground level





5 Whitley Drive.
**Walnut—Reduce and reshape by up-
to 2m.**

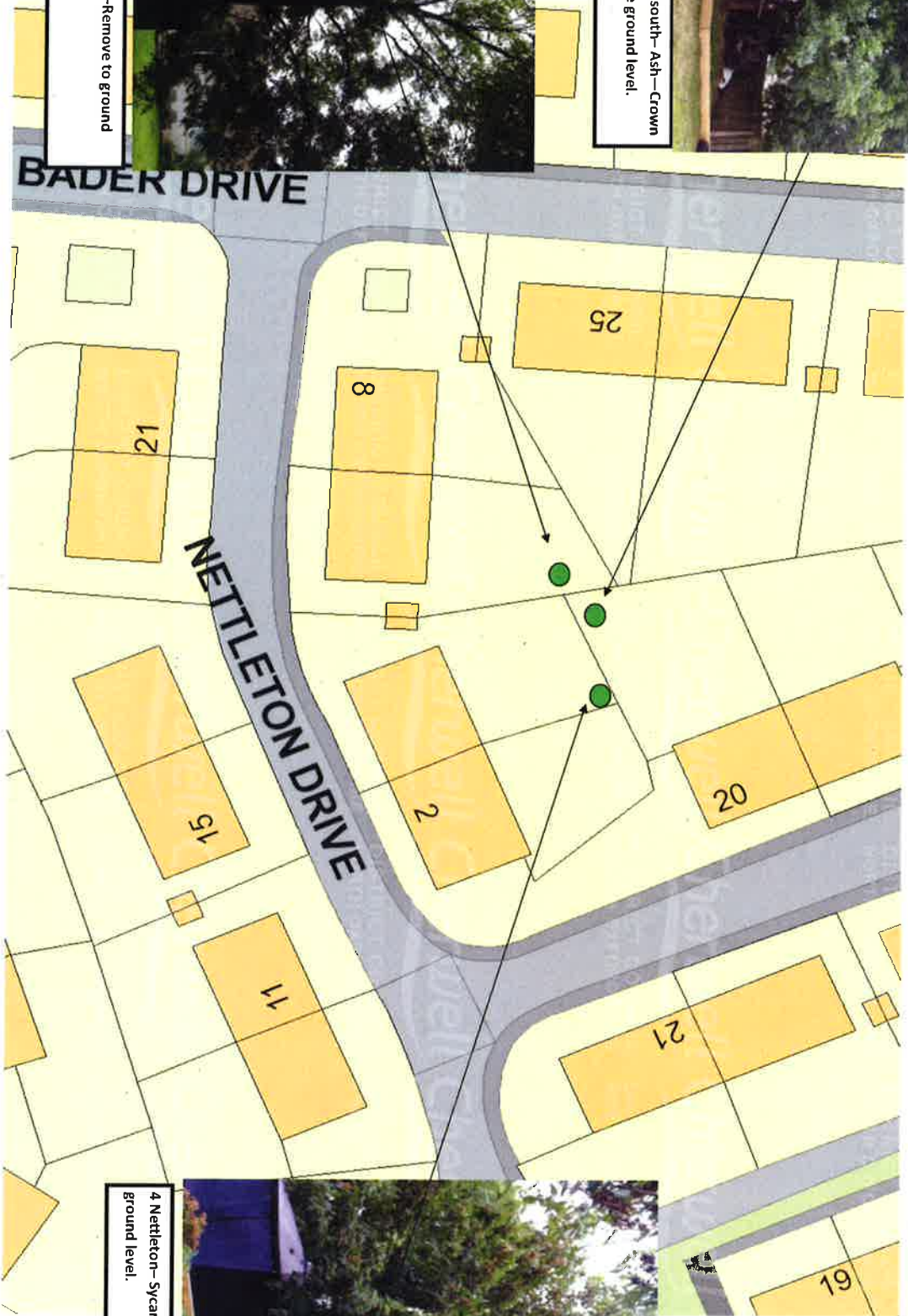
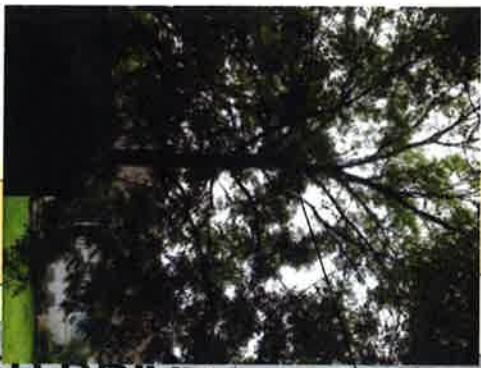


4 Portal Drive North -
Lime—Remove to ground level

20 Portal Drive south— Ash— Crown lift to 4m above ground level.

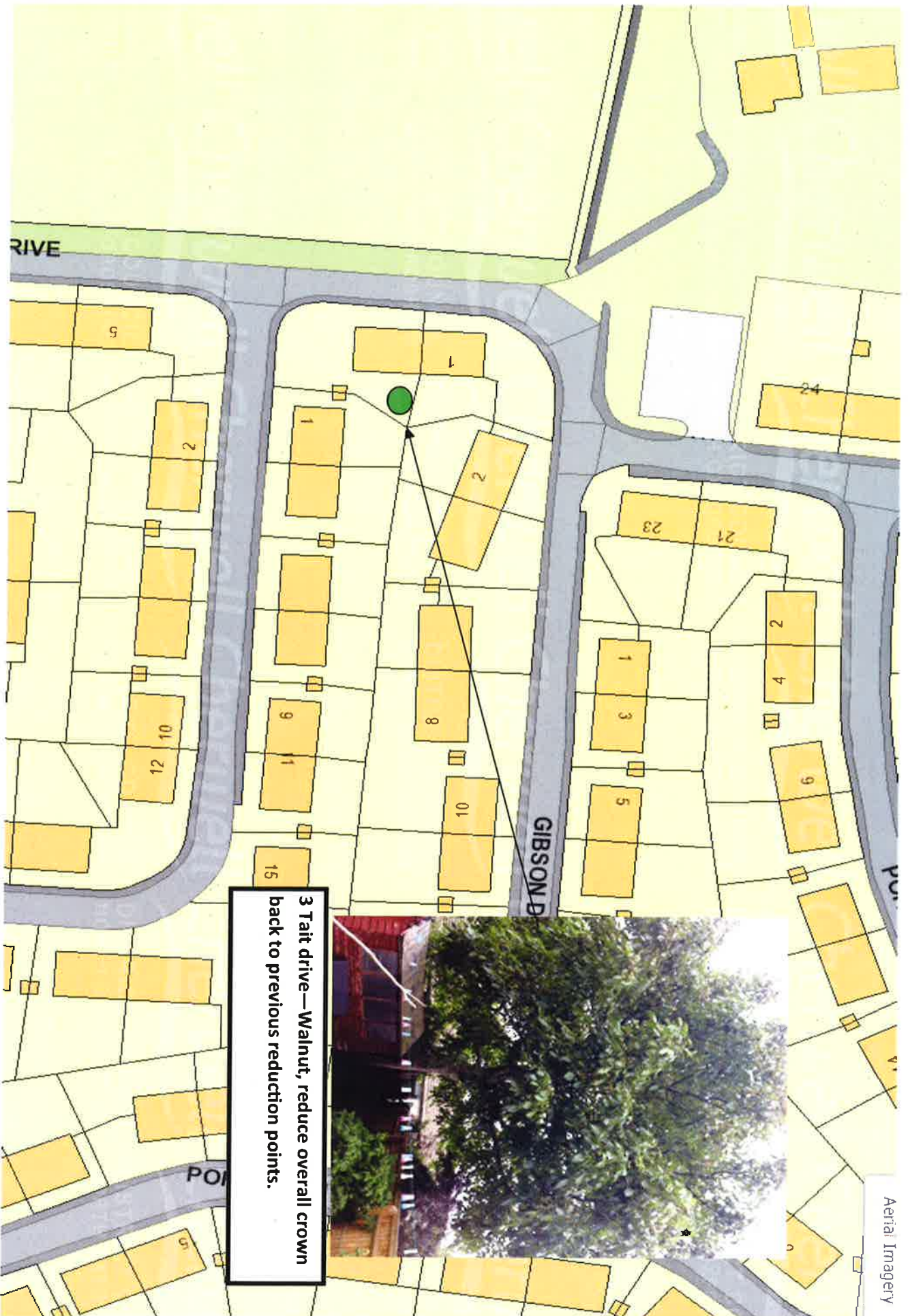


6 Nettleton—Ash—Remove to ground level.



4 Nettleton—Sycamore—Remove to Ground level.

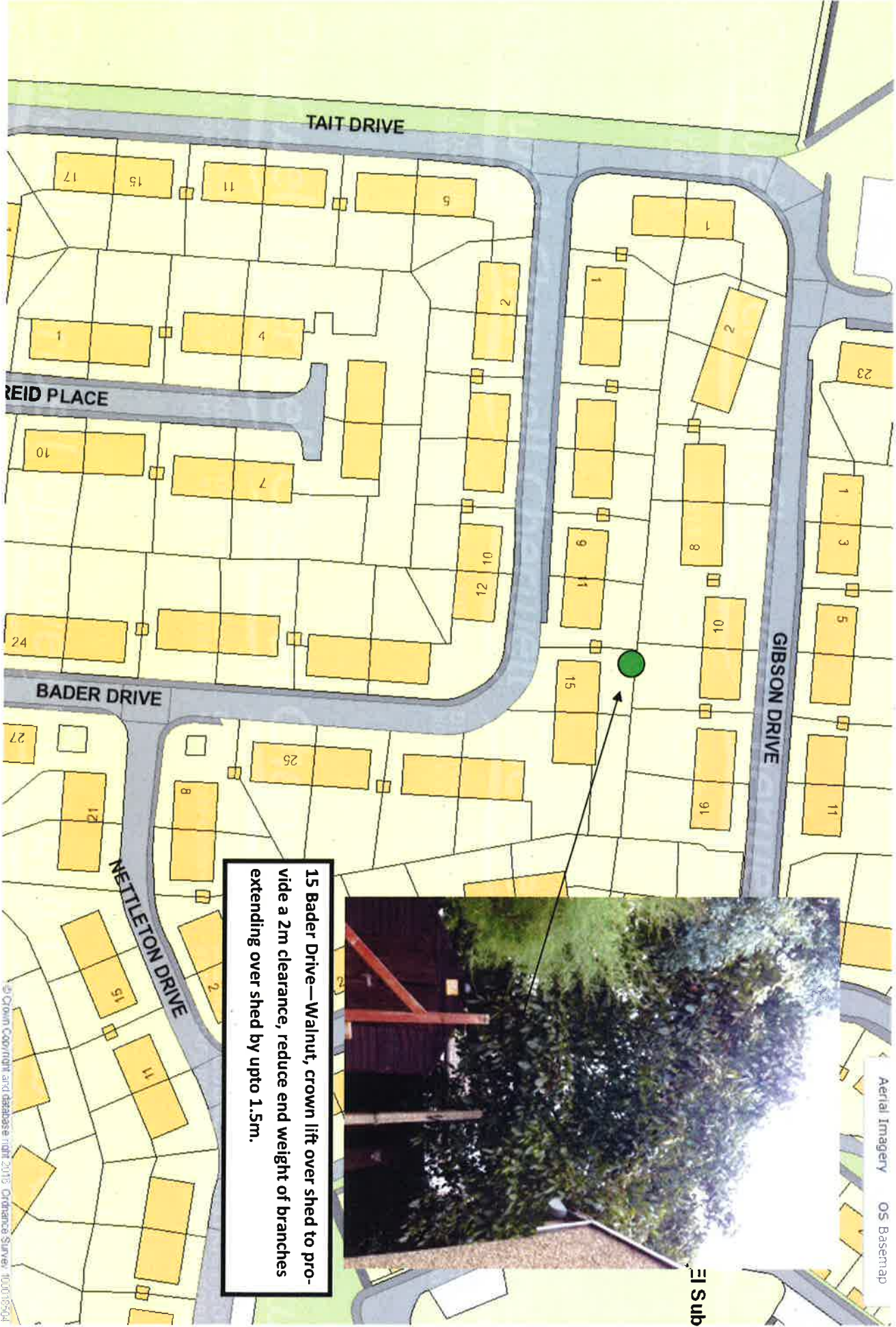




Aerial Imagery



3 Tait drive—Walnut, reduce overall crown back to previous reduction points.



15 Bader Drive—Walnut, crown lift over shed to provide a 2m clearance, reduce end weight of branches extending over shed by upto 1.5m.



El Sub