



destination**research**
delivering results : measuring what matters



Produced by:

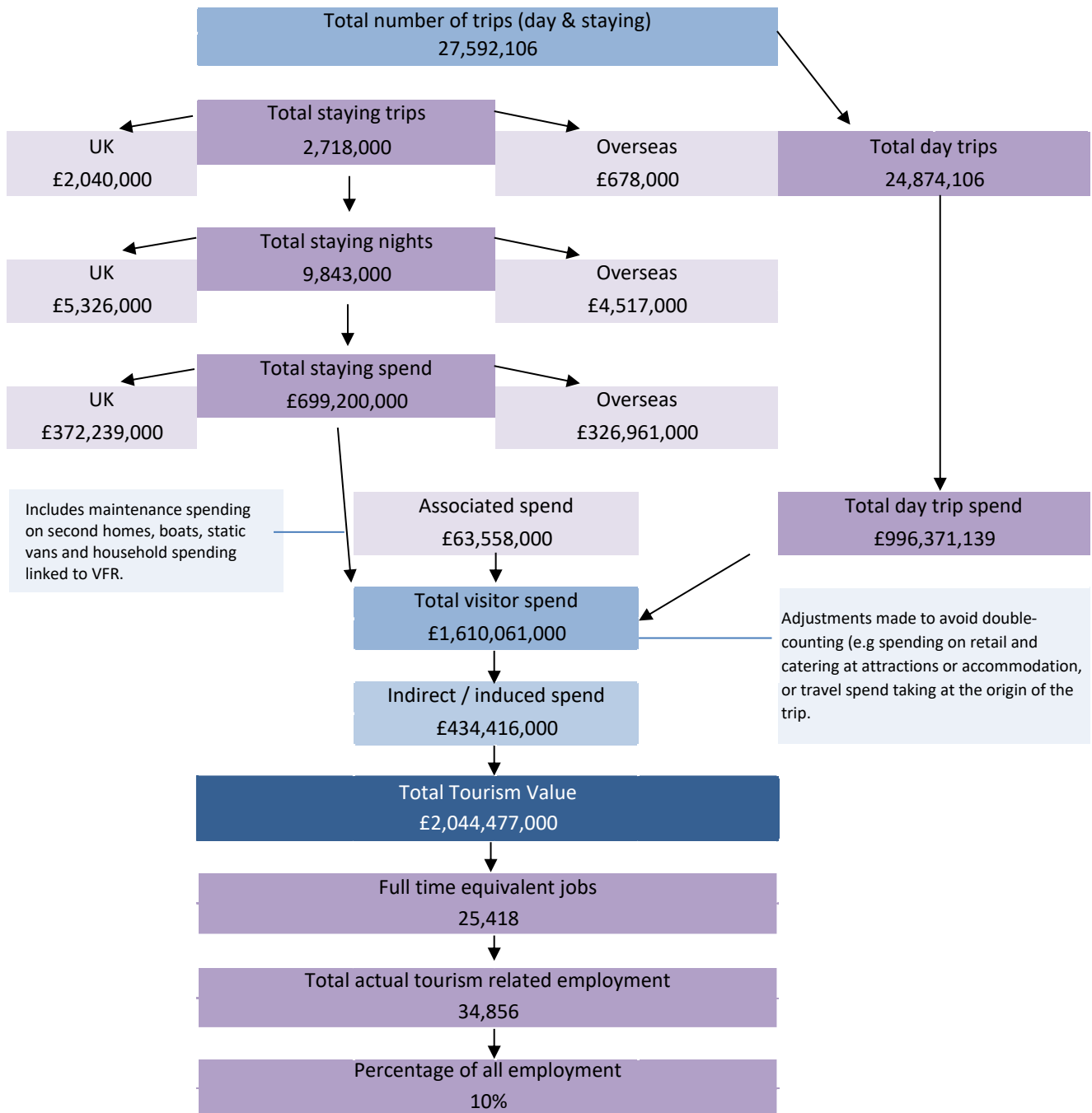
Destination Research
Sergi Jarques, Director

Economic Impact of Tourism

Oxfordshire - 2016

Economic Impact of Tourism – Headline Figures

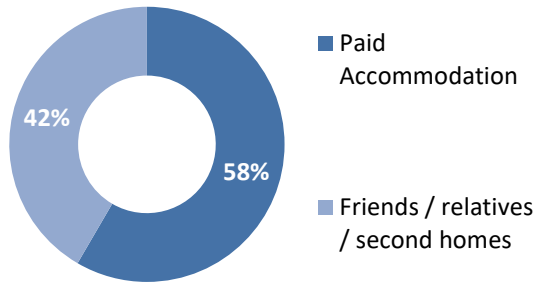
Oxfordshire - 2016



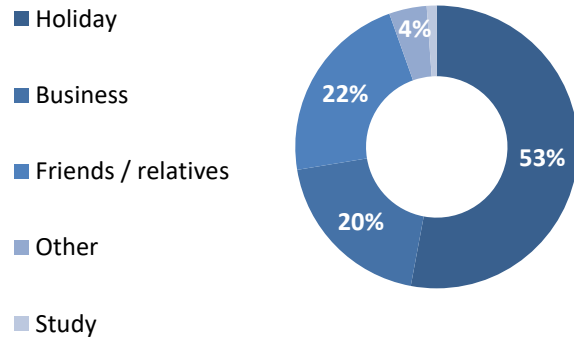
Economic Impact of Tourism – Year on year comparisons

<u>Day Trips</u>	2015	2016	Annual variation
Day trips Volume	23,917,410	24,874,106	4.0%
Day trips Value	£931,187,980	£996,371,139	7.0%
<u>Overnight trips</u>			
Number of trip	2,628,000	2,718,000	3.4%
Number of nights	9,529,000	9,843,000	3.3%
Trip value	£689,766,000	£699,200,000	1.4%
Total Value	£1,959,009,000	£2,044,477,000	4.4%
Actual Jobs	33,447	34,856	4.2%

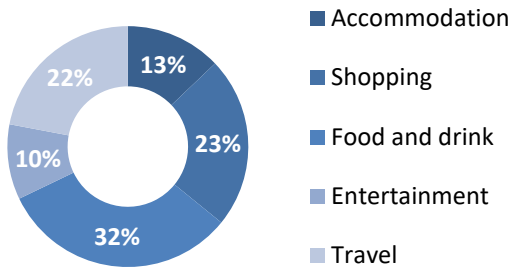
Type of Accommodation



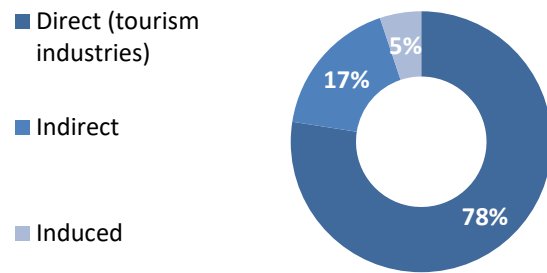
Trips by Purpose



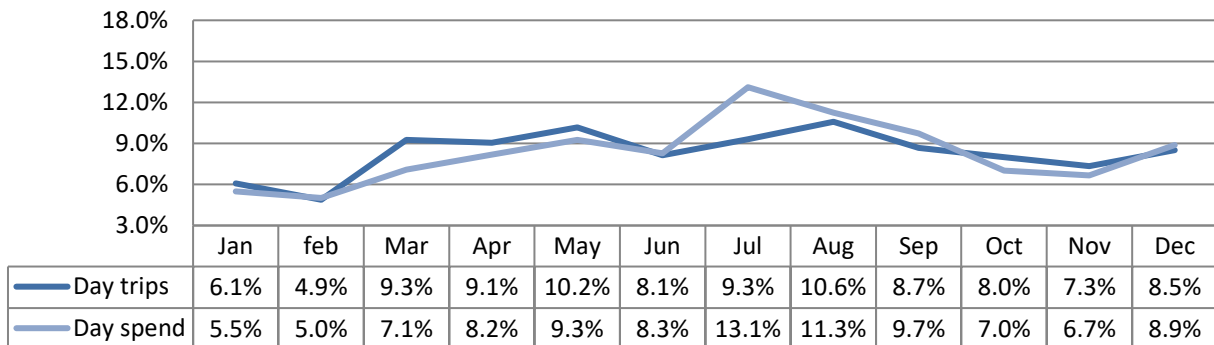
Breakdown of expenditure



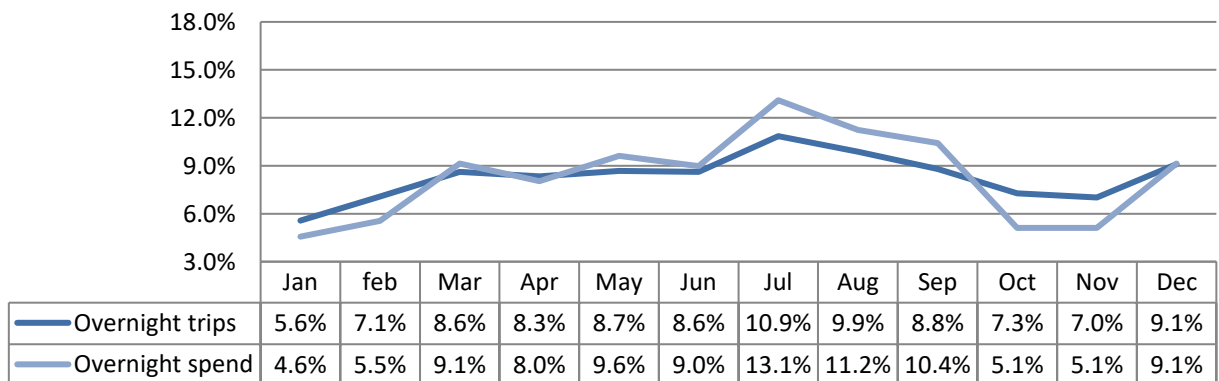
Type of employment



Seasonality - Day visitors



Seasonality - Overnight visitors



Contents	
<u>Contextual Analysis</u>	5
<u>Volume of Tourism</u>	8
Staying Visitors - Accommodation Type	9
Trips by Accommodation	
Nights by Accommodation	
Spend by Accommodation Type	
Staying Visitors - Purpose of Trip	10
Trips by Purpose	
Nights by Purpose	
Spend by Purpose	
Day Visitors	10
Trips and Spend by Urban, Rural and Coastal Area	
<u>Value of Tourism</u>	11
Expenditure Associated With Trips	12
Direct Expenditure Associated with Trips	
Other expenditure associated with tourism activity	
Direct Turnover Derived From Trip Expenditure	
Supplier and Income Induced Turnover	
Total Local Business Turnover Supported by Tourism Activity	
<u>Employment</u>	14
Direct	15
Full time equivalent	
Estimated actual jobs	
Indirect & Induced Employment	15
Full time equivalent	
Estimated actual jobs	
Total Jobs	16
Full time equivalent	
Estimated actual jobs	
Tourism Jobs as a Percentage of Total Employment	16
Appendix I - Cambridge Model - Methodology	18

INTRODUCTION

This report examines the volume and value of tourism and the impact of visitor expenditure on the local economy in 2016 and provides comparative data against previously published data (2015). The results are derived using the Cambridge Economic Impact Model under licence by Destination Research Ltd based on the latest data from national tourism surveys and regionally/locally based data.

CONTEXTUAL ANALYSIS

The three key surveys used to measure volume and expenditure from tourism trips are the GB Tourism Survey (for domestic overnight trips), the International Passenger Survey (IPS) for visits from overseas, and the GB Day Visitor Survey (GBDVS), which measures tourism day visits. In addition, data from accommodation occupancy and visitors to visitor attractions have been used to estimate year-on-year changes in the volume and value of tourism related visits to the area.

Domestic tourism

National Performance

In 2016, British residents took 99.3 million overnight trips in England, totalling 295 million nights away from home. The number of domestic trips was 4% lower than in 2014, and nights were down by 5% in 2015.

Holiday Trips in England in 2016 increased by +2% compared to the same period last year, with 44.7 million trips recorded. Visits to friends and relatives decreased by -9% to 36.9 million. Business trips increased for the January to December period, up by +2% to 14.1 million.

Regional performance

The South East of England region experienced a 9% increase in overnight trips during 2016. Bednights were up by 6% on 2015 and expenditure was up by approximately 6%. This resulted in a marginal decrease in the average length of trips (the number of night per trip) from 2.77 nights per trip in 2015 to 2.69 in 2016.

The region received more visitors in 2016 than in the previous year. However, those who did visit stayed for a slightly shorter period of time, resulting in a lower average spend per trip. The average spend per night was unchanged at £56.4 and the spend per trip was down from £156.10 in 2015 to £151.80 in 2016.

The GB Tourism Survey data is a key driver for the Cambridge model. However, it is not specifically designed to produce highly accurate results at sub-regional level. In order to improve the accuracy of results we have applied a 3-year rolling average to this data to help smooth out short term market fluctuations and highlight longer-term trends.

Domestic visits to Oxfordshire

The domestic tourism results for Oxfordshire used in this model show that the volume of domestic trips to Oxfordshire between 2015 and 2016 were up by 2.4%. Visitor nights were up 3.3% and expenditure was also up by 1.4% (See page 9)

Visits from overseas

National Performance

The number of visits in 2016 grew 4% to a record 37.6 million, after several years of growth since 2010. The number of visitor nights spent in the UK increased by 2% in 2016 to 277 million, with the average number of nights per visit declining at 7.4.

The value of spending increased by 2% to £22.5 billion. Average spend per visit was £599 in 2016, down from the peak of £650 per visit in 2013 and reflecting a lower spend per visit, due to shorter average length of stay.

Regional performance

The number of Overseas trips to the South East of England in 2016 grew 1.4% to reach 5.2 million overnight trips. The total number of nights was down by 2.8% to 36.3 million. Spend was down by 1.3% to £2.2 billion in 2016.

Overseas visits to Oxfordshire

The International Passenger Survey (IPS) data is a key driver for the Cambridge model. However, as with the GBTS, it is not specifically designed to produce highly accurate results at sub-regional level. In order to improve the accuracy of results we have applied a 3-year rolling average to this data to help smooth out short term market fluctuations and highlight longer-term trends. Based on data for the period 2014-2016 the model assumes that the number of overseas trips to Oxfordshire in 2016 was up by 6.6%. The total number of visitor nights was up by 3.3%. Spend was slightly up (1.3%). See page 9.

Tourism Day Visits

National Performance

During 2016, GB residents took a total of 1,834 million Tourism Day Visits to destinations in England, Scotland or Wales, 3% up from 2015. Around £64 billion was spent during these trips, less than 1% up from 2015.

The largest proportion of visits were taken to destinations in England (1,557 million visits or 85% of the total). The distribution of expenditure during visits broadly reflects this pattern, with a total value of day trips to England totalling £53.5 billion (84%) of the total for GB).

Regional performance

During 2016, the volume tourism day visits in the South East of England decreased by 3% to 242 million. However, the Visits to Visitor Attractions Survey (2016) shows that the volume of visitors to fee paying attractions in the South East was up by 5% between 2015 and 2016.

Tourism Day Visit related expenditure was up by 13% to approximately £8.6 billion. In terms of expenditure incurred at visitor attractions, we used changes in admission charges to visitor attractions as well as gross revenue levels to estimate likely visitor expenditure levels. The results show an approximate 4% increase in admission fees and a 10% growth in gross revenue. However, not all areas experienced the same level of growth. Growth revenue was up 6% in coastal areas, 5% up in rural areas and 8% up in more urban areas.

Day visits to Oxfordshire

As with overnight visits, and in order to improve the accuracy of results we have applied a 3-year rolling average to this data to help smooth out short term market fluctuations and highlight longer-term trends. The model assumes day trips to be up 4% and expenditure to increase by approximately 7%, meaning that expenditure per trip has increased slightly between 2015 and 2016. See page 10.

Volume of Tourism

Staying Visitors - Accommodation Type

Trips by Accommodation

	UK		Overseas		Total	
Serviced	780,000	38%	283,000	42%	1,063,000	39%
Self catering	55,000	3%	20,000	3%	75,000	3%
Camping	42,000	2%	16,000	2%	58,000	2%
Static caravans	5,000	0%	1,000	0%	6,000	0%
Group/campus	89,000	4%	81,000	12%	170,000	6%
Paying guest	0	0%	0	0%	0	0%
Second homes	12,000	1%	7,000	1%	19,000	1%
Boat moorings	19,000	1%	0	0%	19,000	1%
Other	149,000	7%	34,000	5%	183,000	7%
Friends & relatives	890,000	44%	212,000	31%	1,102,000	41%
Total	2016	2,040,000	678,000		2,718,000	
Comparison	2015	1,992,000	636,000		2,628,000	
Difference		2.4%	6.6%		3.4%	

Nights by Accommodation

	UK		Overseas		Total	
Serviced	1,556,000	29%	838,000	19%	2,394,000	24%
Self catering	207,000	4%	252,000	6%	459,000	5%
Camping	236,000	4%	53,000	1%	289,000	3%
Static caravans	32,000	1%	3,000	0%	35,000	0%
Group/campus	165,000	3%	1,172,000	26%	1,337,000	14%
Paying guest	0	0%	0	0%	0	0%
Second homes	18,000	0%	155,000	3%	173,000	2%
Boat moorings	122,000	2%	0	0%	122,000	1%
Other	610,000	11%	73,000	2%	683,000	7%
Friends & relatives	2,380,000	45%	1,646,000	36%	4,026,000	41%
Total	2016	5,326,000	4,517,000		9,843,000	
Comparison	2015	5,156,000	4,373,000		9,529,000	
Difference		3.3%	3.3%		3.3%	

Spend by Accommodation Type

	UK		Overseas		Total	
Serviced	£220,380,000	59%	£160,018,000	49%	£380,398,000	54%
Self catering	£12,454,000	3%	£16,308,000	5%	£28,762,000	4%
Camping	£9,917,000	3%	£1,019,000	0%	£10,936,000	2%
Static caravans	£734,000	0%	£105,000	0%	£839,000	0%
Group/campus	£12,834,000	3%	£60,134,000	18%	£72,968,000	10%
Paying guest	£0	0%	£0	0%	£0	0%
Second homes	£686,000	0%	£2,038,000	1%	£2,724,000	0%
Boat moorings	£6,929,000	2%	£0	0%	£6,929,000	1%
Other	£25,711,000	7%	£9,068,000	3%	£34,779,000	5%
Friends & relatives	£82,593,000	22%	£57,886,000	18%	£140,479,000	20%
Total	2016	£372,239,000	£326,961,000		£699,200,000	
Comparison	2015	£367,099,000	£322,667,000		£689,766,000	
Difference		1.4%	1.3%		1.4%	

Serviced accommodation includes hotels, guesthouses, inns, B&B and serviced farmhouse accommodation. Paying guest refers to overseas visitors staying in private houses, primarily language school students. Other trips includes nights spent in transit, in lorry cabs and other temporary accommodation.

Staying Visitors - Purpose of Trip

Trips by Purpose

	UK		Overseas		Total	
Holiday	1,192,000	58%	247,000	36%	1,439,000	53%
Business	365,000	18%	164,000	24%	529,000	19%
Friends & relatives	392,000	19%	210,000	31%	602,000	22%
Other	91,000	4%	26,000	4%	117,000	4%
Study	0	0%	31,000	5%	31,000	1%
Total	2016	2,040,000	678,000		2,718,000	
Comparison	2015	1,992,000	636,000		2,628,000	
Difference		2.4%	6.6%		3.4%	

Nights by Purpose

	UK		Overseas		Total	
Holiday	3,296,000	62%	1,044,000	23%	4,340,000	44%
Business	875,000	16%	607,000	13%	1,482,000	15%
Friends & relatives	954,000	18%	1,548,000	34%	2,502,000	25%
Other	201,000	4%	342,000	8%	543,000	6%
Study	0	0%	976,000	22%	976,000	10%
Total	2016	5,326,000	4,517,000		9,843,000	
Comparison	2015	5,156,000	4,373,000		9,529,000	
Difference		3.3%	3.3%		3.3%	

Spend by Purpose

	UK		Overseas		Total	
Holiday	£241,414,000	65%	£93,817,000	29%	£335,231,000	48%
Business	£70,483,000	19%	£66,012,000	20%	£136,495,000	20%
Friends & relatives	£50,650,000	14%	£82,315,000	25%	£132,965,000	19%
Other	£9,693,000	3%	£18,989,000	6%	£28,682,000	4%
Study	£0	0%	£65,828,000	20%	£65,828,000	9%
Total	2016	£372,239,000	£326,961,000		£699,200,000	
Comparison	2015	£367,099,000	£322,667,000		£689,766,000	
Difference		1.4%	1.3%		1.4%	

Day Visitors

Total Volume and Value of Day Trips

		Trips	Spend
Total	2016	24,874,106	£996,371,139
Comparison	2015	23,917,410	£931,187,980
Difference		4.0%	7.0%

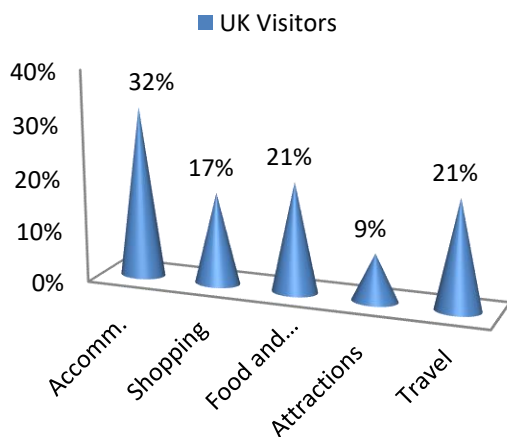
Value of Tourism

Expenditure Associated with Trips:

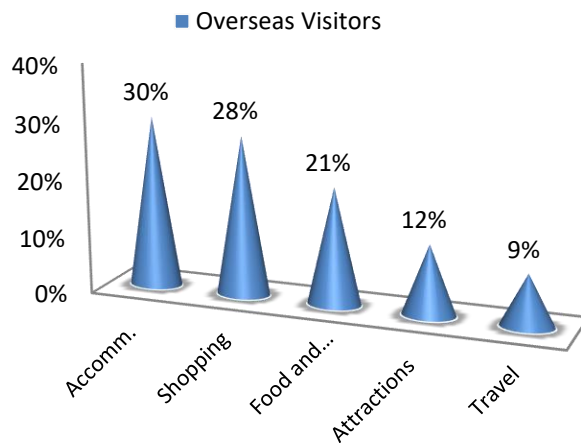
Direct Expenditure Associated with Trips

		Accomm.	Shopping	Food and Drink	Attractions	Travel	Total
UK Visitors		£120,197,000	£64,501,000	£77,341,000	£33,262,000	£76,938,000	£372,239,000
Overseas Visitors		£98,280,000	£91,342,000	£67,100,000	£40,399,000	£29,840,000	£326,961,000
Total Staying		£218,477,000	£155,843,000	£144,441,000	£73,661,000	£106,778,000	£699,200,000
Total Staying (%)		31%	22%	21%	11%	15%	100%
Total Day Visitors		£0	£233,900,000	£398,548,000	£97,455,000	£266,851,000	£996,754,000
Total Day Visitors (%)		0%	23%	40%	10%	27%	100%
Total 2016		£218,477,000	£389,743,000	£542,989,000	£171,116,000	£373,629,000	£1,695,954,000
%		13%	23%	32%	10%	22%	100%
Comparison 2015		£217,694,000	£369,120,000	£517,158,000	£161,243,000	£356,095,000	£1,621,310,000
Difference		0.4%	5.6%	5.0%	6.1%	4.9%	4.6%

Breakdown of expenditure



Breakdown of expenditure



Other expenditure associated with tourism activity

Other expenditure associated with tourism activity - Estimated spend				
Second homes	Boats	Static vans	Friends & relatives	Total
£1,163,000	£2,156,000	£60,000	£60,179,000	£63,558,000

Spend on second homes is assumed to be an average of £2,000 on rates, maintenance, and replacement of furniture and fittings. Spend on boats assumed to be an average of £2,000 on berthing charges, servicing and maintenance and upgrading of equipment. Static van spend arises in the case of vans purchased by the owner and used as a second home. Expenditure is incurred in site fees, utility charges and other spending and is estimated at £2,000. Additional spending is incurred by friends and relatives as a result of people coming to stay with them. A cost of £175 per visit has been assumed based on national research for social and personal visits.

Direct Turnover Derived From Trip Expenditure

Business turnover arises as a result of tourist spending, from the purchase of supplies and services locally by businesses in receipt of visitor spending and as a result of the spending of wages in businesses by employees whose jobs are directly or indirectly supported by tourism spending.

	UK Overnight	Overseas	Day Visitors	Total
Accommodation	£121,786,000	£99,580,000	£7,971,000	£229,337,000
Retail	£63,856,000	£90,429,000	£231,561,000	£385,846,000
Catering	£75,021,000	£65,087,000	£386,592,000	£526,700,000
Attractions	£34,618,000	£42,046,000	£103,779,000	£180,443,000
Transport	£46,163,000	£17,904,000	£160,110,000	£224,177,000
Non-trip spend	£63,558,000	£0	£0	£63,558,000
Total Direct 2016	£383,338,000	£336,710,000	£890,013,000	£1,610,061,000
Comparison 2015	£377,343,320	£331,444,680	£831,789,000	£1,540,577,000
Difference	1.6%	1.6%	7.0%	4.5%

Adjustments have been made to recognise that some spending on retail and food and drink will fall within attractions or accommodation establishments. It is assumed that 40% of travel spend will take place at the origin of the trip rather than at the destination.

Supplier and Income Induced Turnover

	UK Overnight	Overseas	Day Visitors	Total
Indirect spend	£80,538,000	£70,741,000	£171,712,000	£322,991,000
Non trip spending	£12,712,000	£0	£0	£12,712,000
Income induced	£38,217,000	£33,568,000	£26,928,000	£98,713,000
Total 2016	£131,467,000	£104,309,000	£198,640,000	£434,416,000
Comparison 2015	£123,931,270	£108,856,730	£185,644,000	£418,432,000
Difference	6.1%	-4.2%	7.0%	3.8%

Income induced spending arises from expenditure by employees whose jobs are supported by tourism spend.

Total Local Business Turnover Supported by Tourism Activity – Value of Tourism

	UK Overnight	Overseas	Day Visitors	Total
Direct	£383,338,000	£336,710,000	£890,013,000	£1,610,061,000
Indirect	£131,467,000	£104,309,000	£198,640,000	£434,416,000
Total Value 2016	£514,805,000	£441,019,000	£1,088,653,000	£2,044,477,000
Comparison 2015	£501,274,590	£440,301,410	£1,017,433,000	£1,959,009,000
Difference	2.7%	0.2%	7.0%	4.4%

Domestic, 53%

Overseas, 47%

Employment

Employment

The model generates estimates of full time equivalent jobs based on visitor spending. The total number of 'actual' jobs will be higher when part time and seasonal working is taken into account. Conversion of full time equivalent jobs into actual jobs relies on information from business surveys in the sectors receiving visitor spending.

Direct employment

Full time equivalent (FTE)					
	UK Overnight	Overseas	Day Visitor	Total	
Accommodation	1,726	1,412	113	3,251	18%
Retailing	530	750	1,921	3,201	17%
Catering	1,005	872	5,180	7,057	38%
Entertainment	473	575	1,418	2,466	13%
Transport	317	123	1,098	1,538	8%
Non-trip spend	537	472	0	1,009	5%
Total FTE	2016	4,588	4,203	9,731	18,522
Comparison	2015	4,611	4,050	9,094	17,756
Difference		-0.5%	3.8%	7.0%	4.3%
Estimated actual jobs					
	UK Overnight	Overseas	Day Visitor	Total	
Accommodation	2,555	2,089	167	4,811	18%
Retailing	795	1,125	2,882	4,802	18%
Catering	1,508	1,308	7,770	10,586	39%
Entertainment	667	810	2,000	3,477	13%
Transport	447	173	1,549	2,168	8%
Non-trip spend	612	538	0	1,150	4%
Total Actual	2016	6,583	6,044	14,367	26,995
Comparison	2015	6,627	5,821	13,428	25,875
Difference		-0.7%	3.8%	7.0%	4.3%

Indirect & Induced Employment

Full time equivalent (FTE)				
	UK Overnight	Overseas	Day Visitors	Total
Indirect jobs	1,386	1,217	2,726	5,329
Induced jobs	607	533	427	1,567
Total FTE	2016	1,992	1,750	3,153
Comparison	2015	1,967	1,728	2,947
Difference		1.3%	1.3%	7.0%

Estimated actual jobs				
	UK Overnight	Overseas	Day Visitors	Total
Indirect jobs	1,580	1,388	3,107	6,075
Induced jobs	692	607	487	1,786
Total Actual	2016	2,271	1,995	3,594
Comparison	2015	2,243	1,970	3,359
Difference		1.3%	1.3%	7.0%

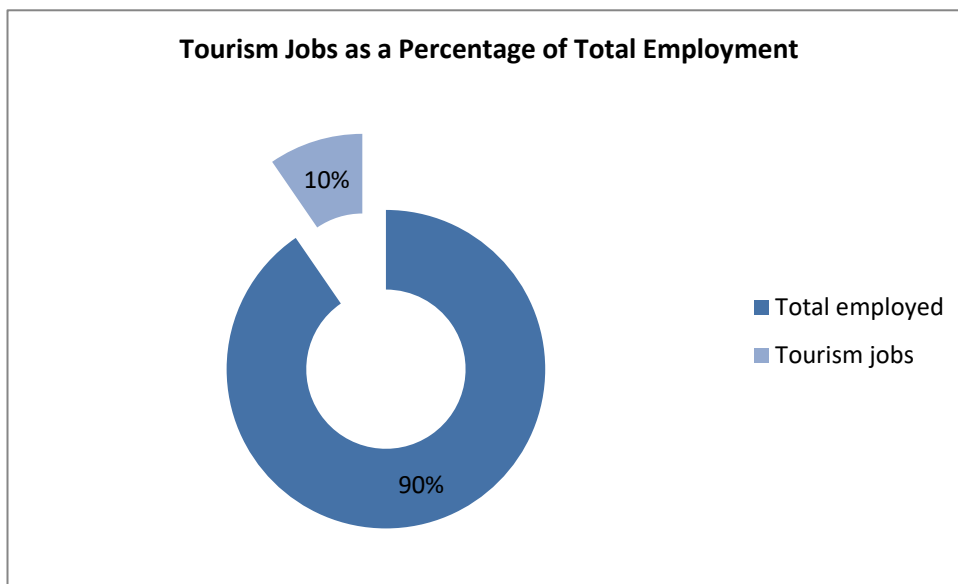
Total Jobs

Actual jobs are estimated from surveys of relevant businesses at locations in England and take account of part time and seasonal working.

Full time equivalent (FTE)						
	UK Overnight	Overseas	Day Visitor		Total	
Direct	4,588	4,203	9,731	76%	18,522	73%
Indirect	1,386	1,217	2,726	21%	5,329	21%
Induced	607	533	427	3%	1,567	6%
Total FTE	2016	6,581	5,953	12,884	25,418	
Comparison	2015	6,578	5,778	12,041	24,398	
Difference		0.0%	3.0%	7.0%	4.2%	
Estimated actual jobs						
	UK Overnight	Overseas	Day Visitor		Total	
Direct	6,583	6,044	14,367	80%	26,995	77%
Indirect	1,580	1,388	3,107	17%	6,075	17%
Induced	692	607	487	3%	1,786	5%
Total Actual	2016	8,855	8,039	17,962	34,856	
Comparison	2015	8,870	7,791	16,787	33,447	
Difference		-0.2%	3.2%	7.0%	4.2%	

Tourism Jobs as a Percentage of Total Employment

	UK Overnight	Overseas	Day visitors	Total
Total employed	363,900	363,900	363,900	363,900
Tourism jobs	8,855	8,039	17,962	34,856
Proportion all jobs	2.4%	2.2%	4.9%	9.6%
Comparison	2015	8,870	8,039	16,787
Difference		-0.2%	0.0%	7.0%



The key 2016 results of the Economic Impact Assessment are:

27.6 million trips were undertaken in the area

24.9 million day trips

2.7 million staying trips

9.8 million nights in the area as a result of staying trips

£1,696 million spent by tourists during their visit to the area

£141 million spent on average in the local economy each month.

£699 million generated by staying trips

£996 million generated from irregular day trips.

£2,044 million spent in the local area as result of tourism, taking into account multiplier effects.

34,856 jobs supported, both for local residents and for those living nearby

26,995 tourism jobs directly supported

7,861 non-tourism related jobs supported linked to multiplier spend from tourism.

Key DOMESTIC staying trips

2.0 million staying trips

5.3 million nights spent in the area as a result of staying trips.

2.6 nights per trip.

£372 million spent by tourists during their visit to the area.

£182.47 spend per trip.

£69.89 spend per night.

£31 million spent on average in the local economy each month.

Key OVERSEAS staying trips

0.7 million staying trips

4.5 million nights spent in the area as a result of staying trips.

6.7 nights per trip.

£327 million spent by tourists during their visit to the area.

£482.24 spend per trip.

£72.38 spend per night.

£27 million spent on average in the local economy each month.

Appendix I - Introduction to Cambridge Model

This report examines the volume and value of tourism and the impact of that expenditure on the local economy. The figures were derived using the Cambridge Economic Impact Model and the research was undertaken by Destination Research.

The model utilises information from national tourism surveys and regionally based data held by Destination Research. It distributes regional activity as measured in those surveys to local areas using 'drivers' such as the accommodation stock and occupancy which influence the distribution of tourism activity at local level.

Limitations of the Model

The methodology and accuracy of the above sources varies. The results of the model should therefore be regarded as estimates which are indicative of the scale and importance of visitor activity in the local area. It is important to note that in the national tourism surveys the sample sizes for each area changes year on year. This is as a result of the random probability nature of the methodology. As such, the results of the Cambridge Model are best viewed as a snapshot in time and we would caution against year-on-year comparisons.

It should be noted that the model cannot take into account any leakage of expenditure from tourists taking day trips out of the area in which they are staying. While it is assumed that these may broadly balance each other in many areas, in locations receiving significant numbers of day visitors from London, there is likely to be an underestimate in relation to the number of overseas day visitors staying in holiday accommodation in London.

Whilst it is important to be aware of these issues, we are confident that the estimates we have produced are as reliable as is practically possible within the constraints of the information available.

Rounding

All figures used in this report have been rounded. In some tables there may therefore be a slight discrepancy between totals and sub totals.

Data sources

The main national surveys used as data sources in stage one include:

- Great Britain Tourism Survey (GBTS) - information on tourism activity by GB residents;
- International Passenger Survey (IPS) information on overseas visitors to the United Kingdom;
- Day Visits in the annual Great Britain Day Visitor Survey using information on visits lasting more than 3 hours and taken on an irregular basis

These surveys provide information down to a regional level. In order to disaggregate data to a local level the following information sources are used:

- Records of known local accommodation stock held by Destination Research;
- VisitEngland's surveys of Visits to Attractions, which provide data on the number of visitors to individual tourist attractions;
- Mid- 2016 estimates of resident population as based on the 2011 Census of Population;
- Selected data from the 2011 Census of Employment;
- Selected data on the countryside including national designations.

Staying Visitors

The GBTS provides information on the total number of trips to the region and the relative proportions using different types of accommodation. By matching these figures to the supply of such accommodation, the regional average number of trips per bedspace or unit of accommodation can be derived. The IPS provides information on the total number of trips by overseas visitors to the region. The model uses three year rolling averages to reduce extreme highs and lows which are due to small sample sizes, rather than being a reflection on drastic changes in demand year-on-year.

Day Visitors

Information on day trips at the regional level is available from the Day Visits in Great Britain survey. The survey includes all leisure-related trips from home. It should be noted that a large proportion are local trips made by people resident in the locality. The model uses information from the survey to estimate the number of longer day trips (defined as those lasting at least 3 hours and involving travel of more than 20 miles) and irregular trips lasting more than 3 hours.

Impact of tourism expenditure

This section examines the impact of the tourism expenditure in terms of the direct, indirect and induced expenditure as well as an estimate of the actual jobs (both direct and indirect) supported by tourism expenditure in the district.

The GBTS, IPS and Day Visits to Great Britain survey data on the breakdown of visitor spending. The impact of this initial round of expenditure will be subsequently increased by multiplier effects. These arise from the purchase of supplies and services by the businesses in receipt of visitor expenditure (indirect impacts), and by the income induced-effects arising from the spending of wages by employees in the first round of business and in subsequent expenditure in supplier business (induced impacts).

The New Earnings Survey which provides information on wage levels by industry sector and region; an internal business database which includes data on the structure of business expenditure, local linkages and multiplier ratios drawn from a wide range of business and economic studies carried out by Geoff Broom Associates, PA Cambridge Economic Consultants and others. By applying the breakdown to the estimates of visitor spending, the model generates estimates of total direct spending.

Evidence from national studies suggests that some minor adjustments are required to match visitor spend to business turnover – for example, some expenditure on food and drink actually takes place in inns and hotels that fall in the accommodation sector and within attractions. More significantly, expenditure on travel costs associated with individual trips is equally likely to take place at the origin of the trip as at the destination. Therefore the model assumes that only 40% of travel expenditure accrues to the destination area.

Number of full time job equivalents

Having identified the value of turnover generated by visitor spending, it is possible to estimate the employment associated with that spending. Wages for staff and drawings for the proprietors will absorb a proportion of that turnover. By applying these proportions to the overall additional turnover in each sector, the amount of money absorbed by employment costs can be calculated. The New Earnings Survey provides data from which the average costs by business sector, adjusted to take account of regional differences, can be calculated.

After allowing for additional costs such as National Insurance and pension costs, an average employment cost per full time equivalent job can be estimated. The number of such jobs in the local area can then be estimated by dividing the amount of business expenditure on wages and drawings by the average employment cost per job.

Number of Actual Jobs

The model generates estimates of full time equivalent jobs based on visitor spending. However, the total number of actual jobs will be higher when part time and seasonal working is taken into account. The full time equivalent jobs arising directly from visitor spending are converted into actual jobs using information from business surveys in the sectors receiving visitor spending. In general, the conversion factor varies around 1.5 in those sectors.

The indirect and induced jobs arise across a much wider range of employment sectors. Therefore, the average 1.16 for all sectors based on Census of Employment data has been used to convert full time equivalent jobs in this sector to actual jobs.

The employment estimates generated by the model include both self employed and employed people supported by visitor expenditure. The model also includes an estimate of the additional jobs arising in the attractions sector, which are not related to visitor expenditure. However, the numbers do not include other tourism-related employment such as jobs in local authorities arising from their tourism functions, e.g. tourist information staff, additional public health, parks and gardens, public conveniences, maintenance sections and jobs arising from capital investment in tourism facilities.

Produced by:



Registered in England No. 9096970
VAT Registration No. GB 192 3576 85

45 Colchester Road
Manningtree
CO11 2BA

Sergi Jarques
Director
Tel: 01206 392528
info@destinationresearch.co.uk
www.destinationresearch.co.uk