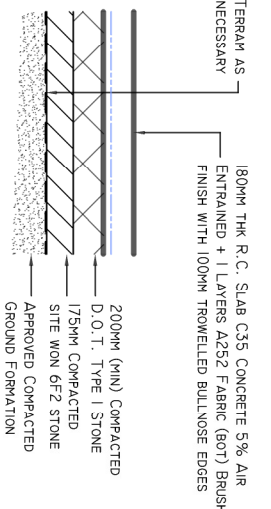
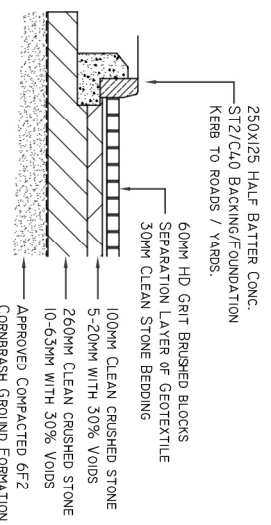


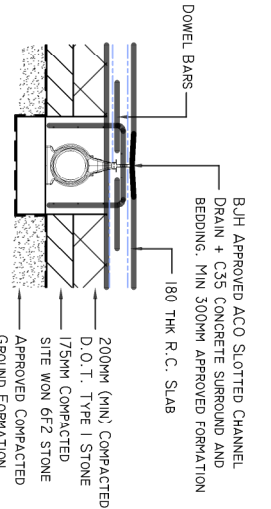
RC YARD KERB DETAIL 1:25



RC YARD DETAIL 1:25



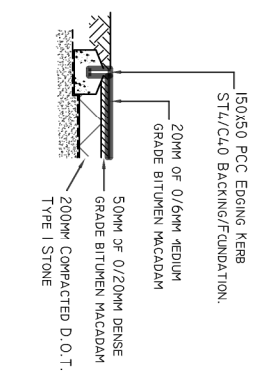
PERMEABLE BLOCK CARPARK 1:25



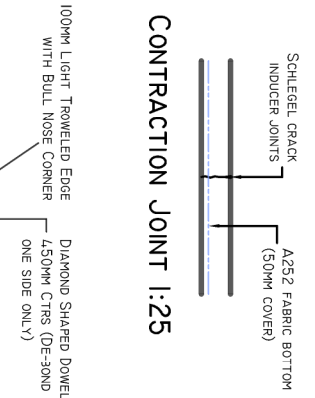
HD LINE DRAIN 1:25

**KEY:**

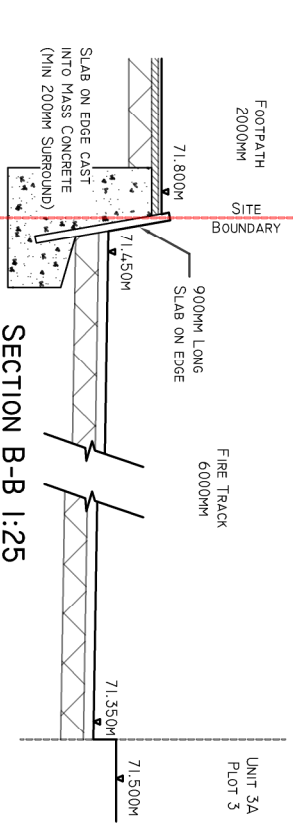
- 180MM THK RC YARD SLAB
- PERMEABLE BLOCK PAVING CARPARK
- BAKEL BUILDING
- ACC GROUND GUARD
- FIRE TRACK
- SWALE



PATH EDGING DETAIL 1:25

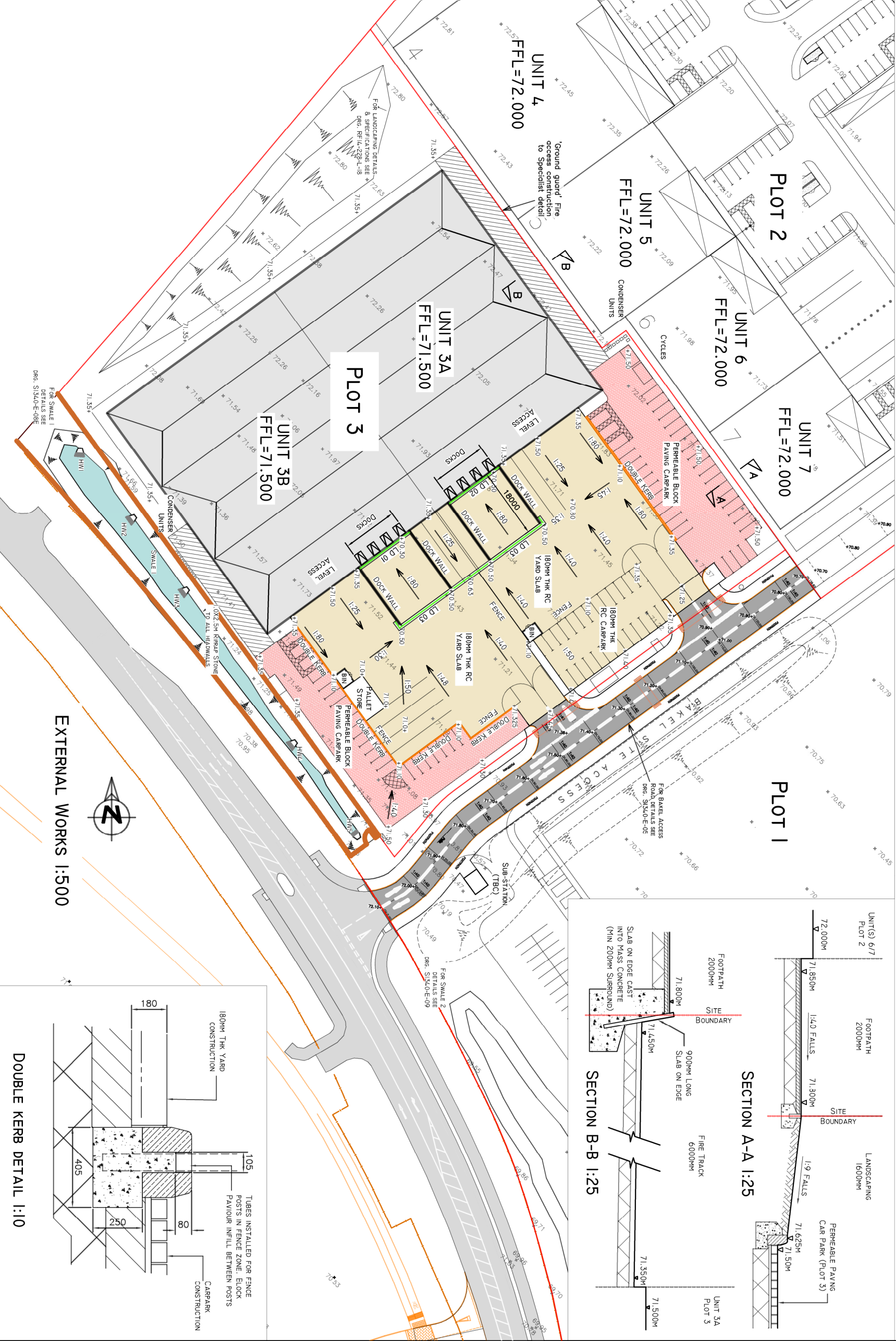


CONTRACTION JOINT 1:25



SECTION B-B 1:25

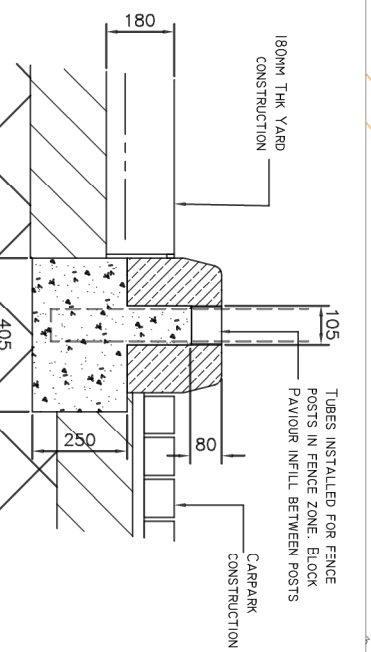
SECTION A-A 1:25



EXTERNAL WORKS 1:500



DOUBLE KERB DETAIL 1:10



**CONSTRUCTION**

1. THIS DRAWING IS TO BE READ IN CONJUNCTION WITH ALL RELEVANT ARCHITECTS AND BAILEY JOHNSON HAYES DRAWINGS AND SPECIFICATIONS.
2. THE SITE IS TO BE STRIPPED OF ALL TOPSOIL AND ANY DELETERIOUS MATERIAL. SUFFICIENT TOPSOIL IS TO BE STOCKPILED FOR LATER REUSE IN LANDSCAPED AREAS. ANY SURPLUS MATERIAL TO BE REMOVED FROM SITE. SITE STRIP LEVEL TO BE VERIFIED ON SITE AND APPROVED BY THE ENGINEER.
3. ALL FORMATIONS TO BE PROOF ROLLED WITH 2 PASSES OF A SMOOTH TWIN WHEELED VIBRATORY ROLLER (AS BELOW)
4. IF SITE STRIP LEVEL IS FOUND TO BE LOWER THAN FORMATION LEVEL DIFFERENCE TO BE MADE UP USING IMPORTED WELL GRADED STONE FILL 75MM - DUST TO BE APPROVED BY THE ENGINEER. THE HARDCORE SHALL BE LAID IN 150MM LAYERS (MAX) AND COMPACTED WITH 8 PASSES OF A SMOOTH WHEELED VIBRATORY ROLLER HAVING A STATIC LOAD OF NOT LESS THAN 35KGS/25MM WIDTH.

H	06.12.17	Minor Revis
G	04.12.17	Sections added & Minor Revis
F	26.11.17	Double kerbs strom - detail added
E	18.11.17	Minor revis
D	07.11.17	Updated to latest Architects plan
C	21.08.17	1 Line drain removed
B	31.07.17	Updated to latest Architects plan
A	03.06.17	Updated to latest Architects plan

**CLIENT:**  
ALBION LAND (2013) LTD

**BAKEL**  
External Works Layout

**BAILEY JOHNSON HAYES**  
Consulting Engineers

STABRAGE: Suite 4, Phoenix House, 63 Campbell Rd, STABRAGES HILLS, AU 571  
MANCHESTER: Gange House, John Dalton Street, MANCHESTER, M2 6JW

Scale: 1:500, 25  
Date: 31.05.17  
Drawn: JNG

**S1340-E-03H**