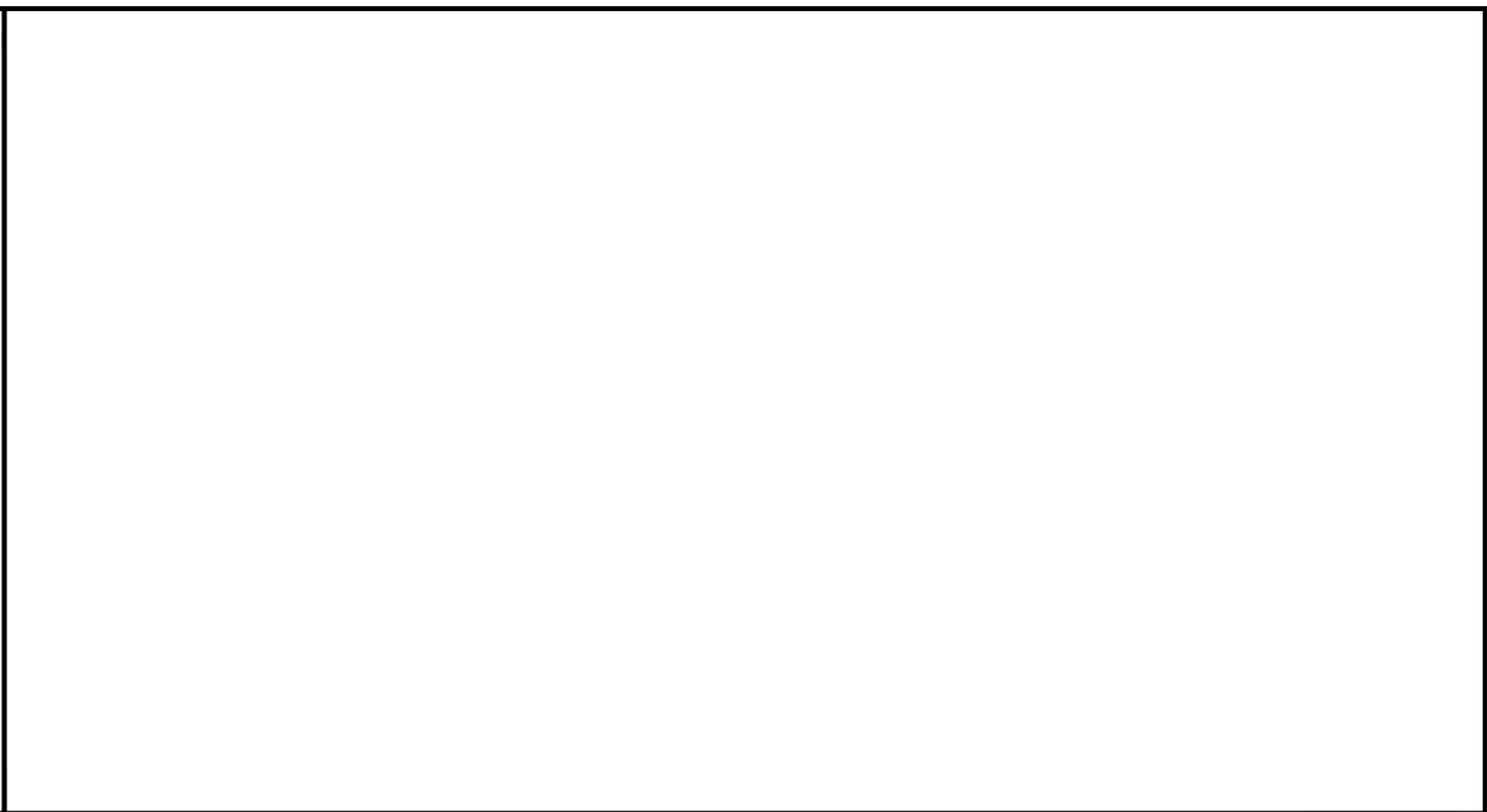
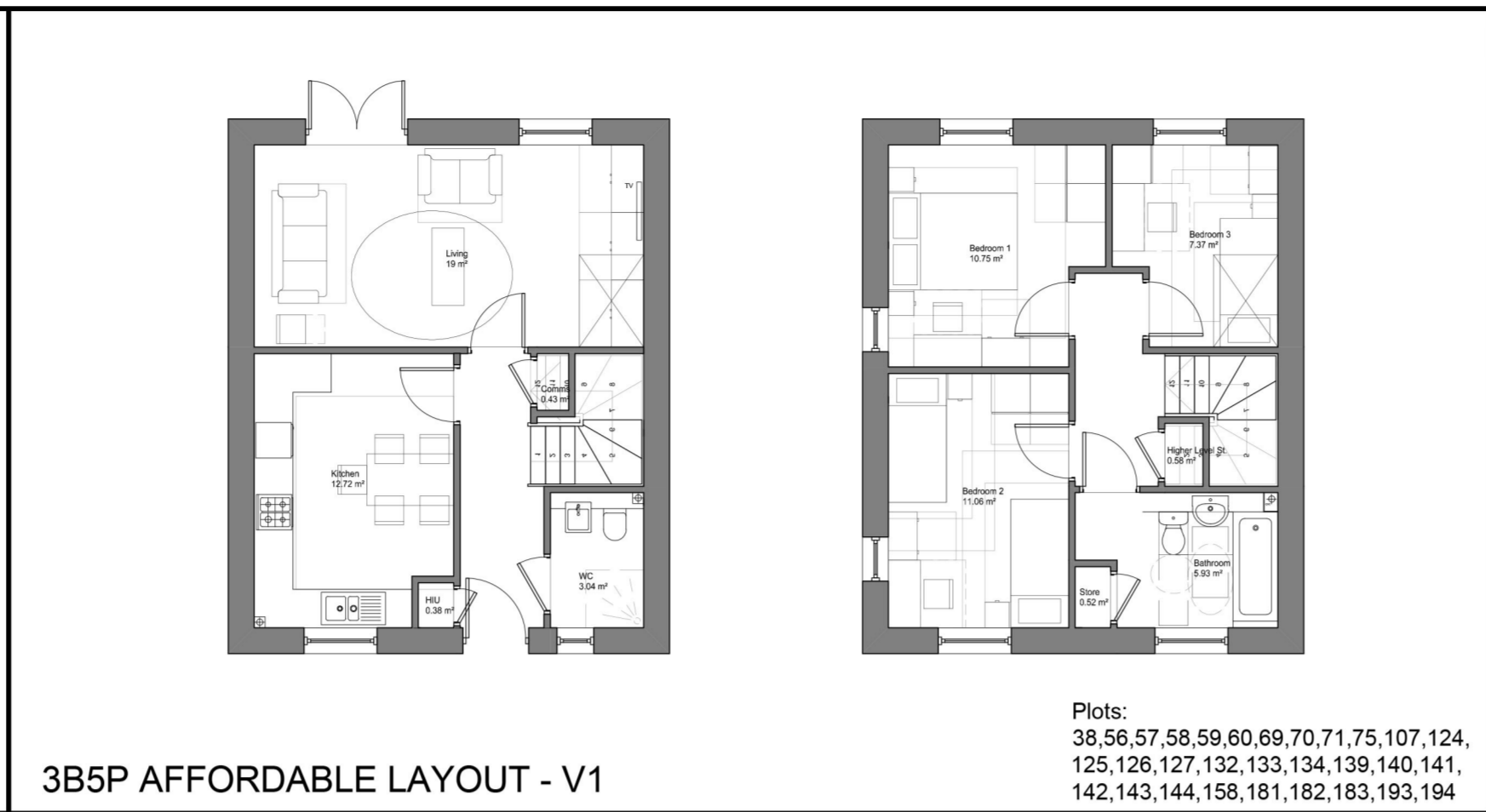
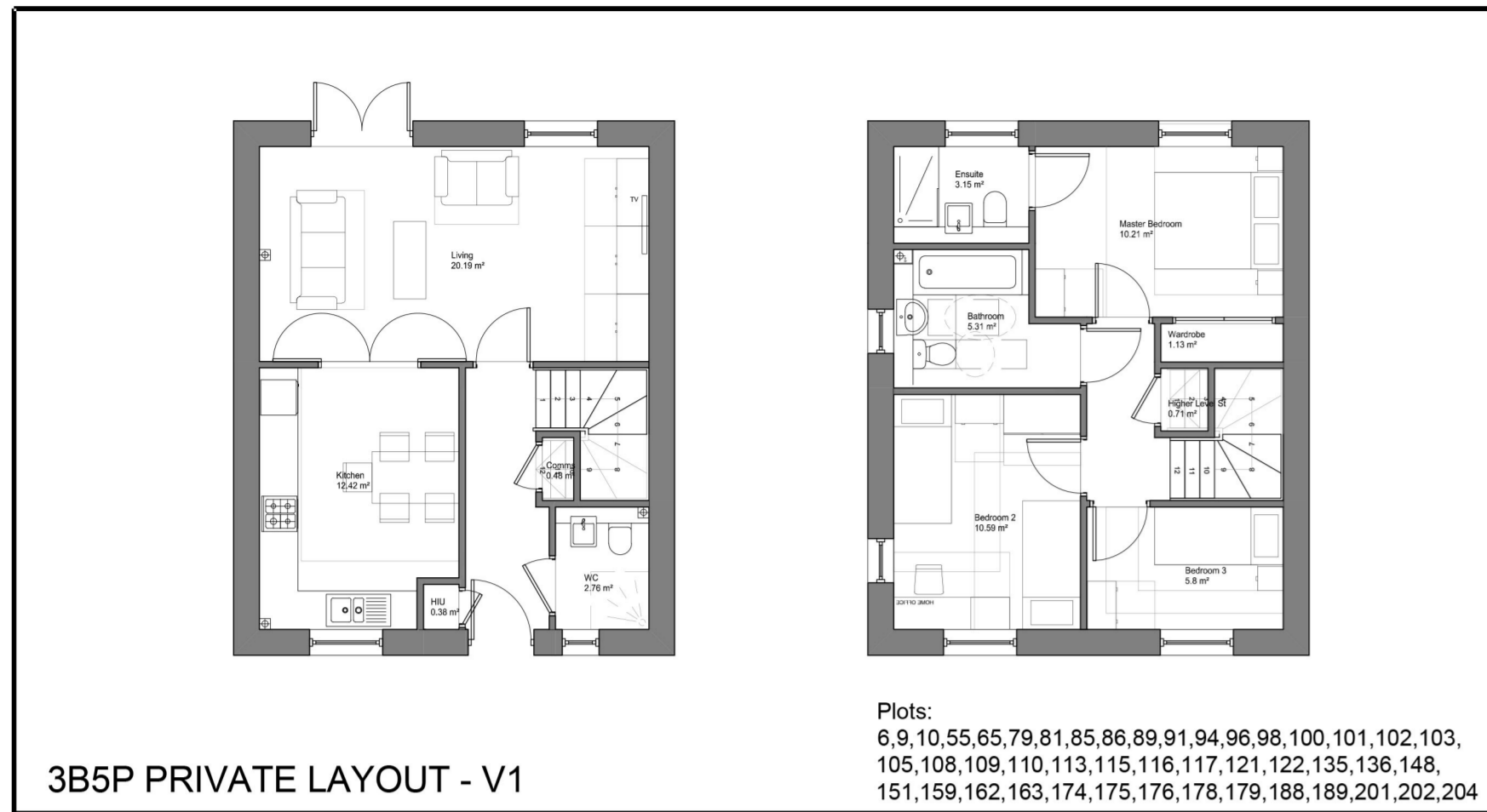


The contractor is responsible for checking dimensions, tolerances and references. Any discrepancy to be verified with the Architect before proceeding with the works. Where an item is covered by drawings to different scales the larger scale drawing is to be worked to.  
 Do not scale drawing. Figured dimensions to be worked to in all cases.  
 CDM REGULATIONS 2015. All current drawings and specifications for the project must be read in conjunction with the Designer's Hazard and Environment Assessment Record  
 All intellectual property rights reserved.



**3B5P Area: 90.8m2**

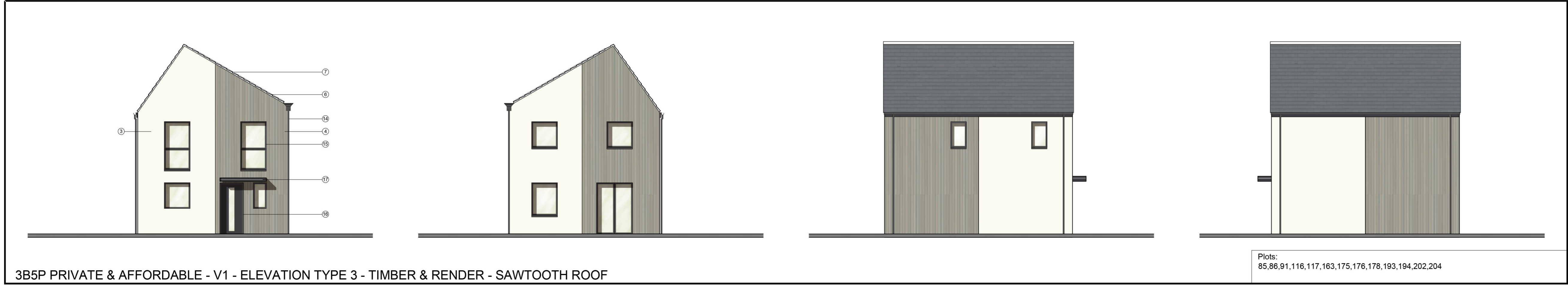
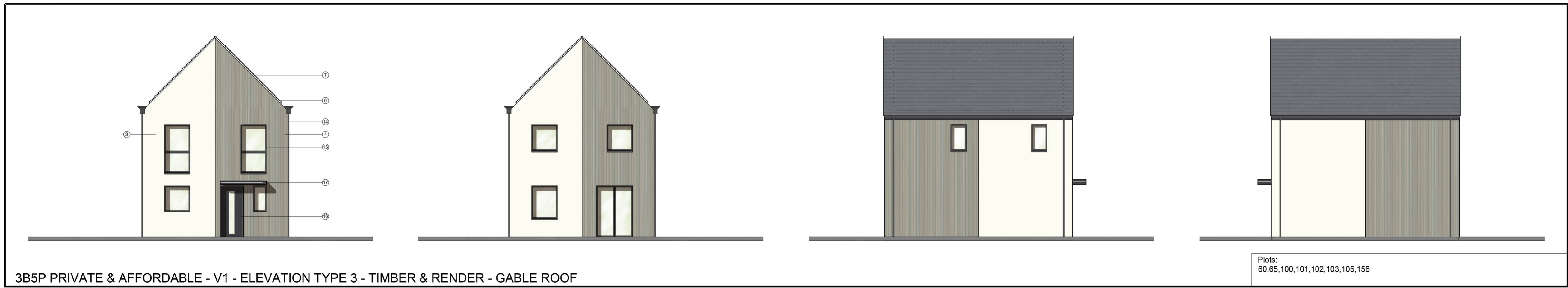
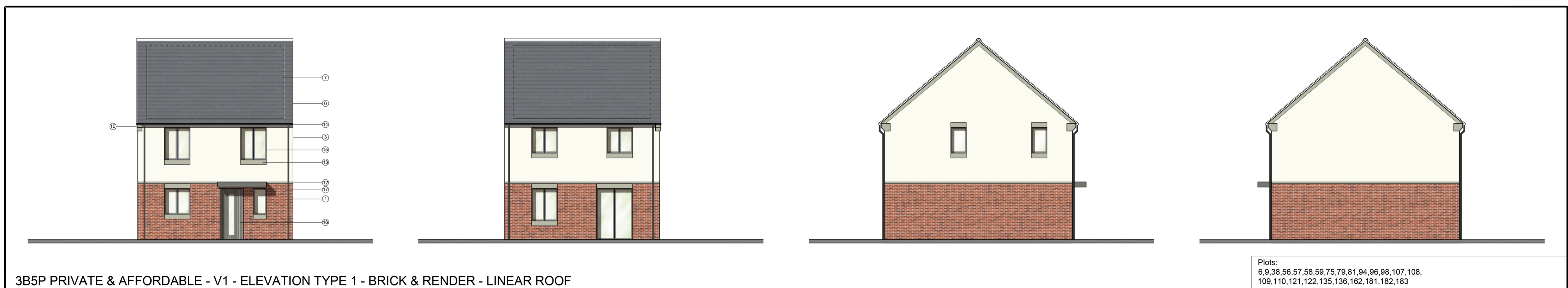
**Handed Plots:**  
 38, 69, 75, 79, 81, 100, 101, 102, 113, 115, 124, 132, 139, 143, 174

**NOTE A:** Gable windows will only apply to plots indicated on drawing: 'AA2699(3)\_2007'

**NOTE B:** For individual plot roof materials refer to drawing 'AA2699(3)2006'

**NOTE C:** All windows to bathrooms are to be obscured

**NOTE D:** Enriched plots that are handed should maintain a south facing roof orientation for P panels.



- Materials and details key**
- ① Face brickwork - Type 1, red multi, Type 3, red multi, Enriched, red multi.
  - ② Recessed alternate coursed brick detail.
  - ③ Through colour render; colour ivory
  - ④ Horizontal/Vertical timber cladding.
  - ⑤ Coursed stonework.
  - ⑥ Dark grey or Bradstone roof tiles - Refer to drawing AA2699C(3)2006
  - ⑦ PV to south facing roof.
  - ⑧ Clipped verge detail - Stone/stone effect to match head and sills.
  - ⑨ Clipped verge detail
  - ⑩ Reconstituted stone corbel unit (colour: Portland)
  - ⑪ Brickwork corbel; type / colour to match face brickwork
  - ⑫ Projecting reconstituted stone string course (colour Portland)
  - ⑬ Re-constituted stone (colour Portland) heads & sills
  - ⑭ UPVC gutters & down pipes; colour to match window frames
  - ⑮ Window frames - Type 1: Light grey, Type 3: Dark grey, Enriched: Black
  - ⑯ Entrance door - Type 1: Light grey, Type 3: Dark grey, Enriched: Black
  - ⑰ Entrance canopy; style to match dwelling type and colour to match doors and windows.
  - ⑱ Up and over garage door; colour to match windows
  - ⑲ Double glazed roof light
  - ⑳ Inset horizontal timber cladding (Thermowood; with natural untreated finish)
  - ㉑ Standing seam roof
  - ㉒ Double height opening with glazing and grey powder coated metal spandrel panels. Colour: grey
  - ㉓ Projecting stone window surround

| Rev | Date     | Description  | Dwn | Ckd |
|-----|----------|--|-----|-----|
| A   | 30/10/17 | Handed plots note updated to reflect site plan. Scale bar added. | SW  | RS  |
| /   | 19/10/17 | First Issue...Planning   | SW  | RS  |

**Bicester Eco Town - Phases 3&4**  
 3B5P Private & Affordable - V1 House Types

**AA2699C(3)/2103** **A**  
 PLANNING  
 Drawn SW Checked RS Date OCT 2017 Scale @ A1 1:100

