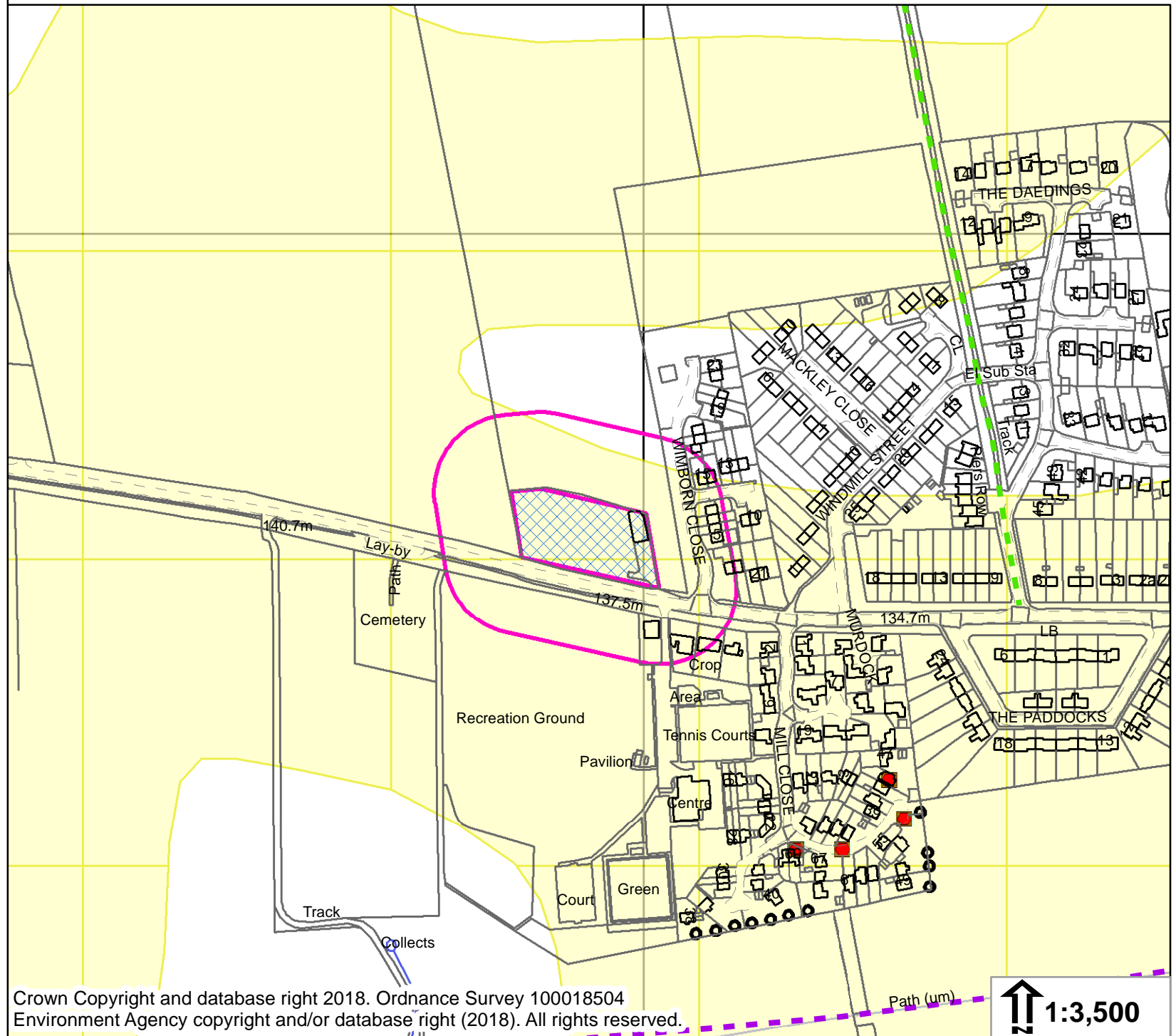


**PUBLIC RIGHTS OF WAY**

- Public Footpath
- Public Bridleway
- Restricted Byway
- Byway Open to all Traffic
- SWIFT\_RECORDS
- PROTECTED\_AND\_NOTABLE\_SPECIES
- PROTECTED\_SPECIES\_BUFFER
- ROAD\_VERGE\_NATURE\_RESERVES
- EIL\_TEXT
- ASSETS OF COMMUNITY VALUE
- Area TPOs
- Group TPOs
- TPO Trees
- Woodland TPOs
- LISTED BUILDINGS**
- GRADE**
- I\*
- II\*
- II
- DL
- CURTILAGE LISTING
- LOCALLY\_LISTED\_BUILDINGS
- ARTICLE\_4
- ARCHAEOLOGICAL\_CONSTRAINT\_PRIORITY\_AREAS
- SCHEDULED\_ANCIENT\_MONUMENT
- EIL\_REGIONS
- PONDS\_MAPPING (INCLUDING GREAT CRESTED NEWTS)
- NERC ACT S41 Habitats (Previously UKBP PRIORITY HABITATS)
- REGISTERED\_COMMON\_LAND
- SPECIAL\_SITES\_OF\_SCIENTIFIC\_INTEREST
- SPECIAL\_AREAS\_OF\_CONSERVATION
- ANCIENT\_WOODLAND
- CONSERVATION\_AREAS
- DISTRICT\_WILDLIFE\_SITES
- LOCAL\_WILDLIFE\_SITES
- PROPOSED\_NEW\_LWS\_AND\_EXTENSIONS\_LWS
- LOCAL\_NATURE\_RESERVE
- PARKS\_AND\_GARDENS
- AREAS\_OF\_OUTSTANDING\_NATURAL\_BEAUTY
- RAILWAY\_TUNNEL
- HIGH\_PRESSURE\_GAS\_PIPELINES
- LGS\_POINTS
- LGS\_POLYGONS
- POTENTIALLY CONTAMINATED LAND**
- Buffer Distance**
- EA\_LANDFILL\_SITES
- Buffer Distance**
- 0
- 50
- 250
- HISTORIC\_LANDFILL\_SITES\_10K
- BANK\_TOP\_WIDTH\_PLANNING
- CRT\_HOUSEHOLD\_AND\_MINOR\_SCALE\_DEVELOPMENTS
- CRT\_EIA\_AND\_MAJOR\_SCALE\_DEVELOPMENTS
- Flood Zone 3
- Flood Zone 2
- NAT\_FSA
- NAT\_DEFENCES
- NAT\_AREAS\_BENEFIT
- NAT\_CENTRELINES
- HS2 SAFEGUARDING\_ZONES**
- Type**
- Safeguarding Limits
- Sub-Surface
- Surface
- NATURALLY\_ELEVATED\_ARSENIC
- GREEN\_BELT
- CONSERVATION\_TARGET\_AREAS
- CONSERVATION\_TARGET\_AREAS\_NEW\_EXTENSIONS\_MODIFICATIONS
- MINERAL\_CONSULTATION\_AREAS
- MINERAL\_CONSULTATION\_REGION
- Neighbourhood Development Plans**
- Details**
- Neighbourhood Plan Area
- Important Amenity Green Spaces
- Local Green Spaces
- NATIONAL\_GRID\_REFERENCE
- WARDS
- PARISHES



Crown Copyright and database right 2018. Ordnance Survey 100018504  
 Environment Agency copyright and/or database right (2018). All rights reserved.

↑ 1:3,500