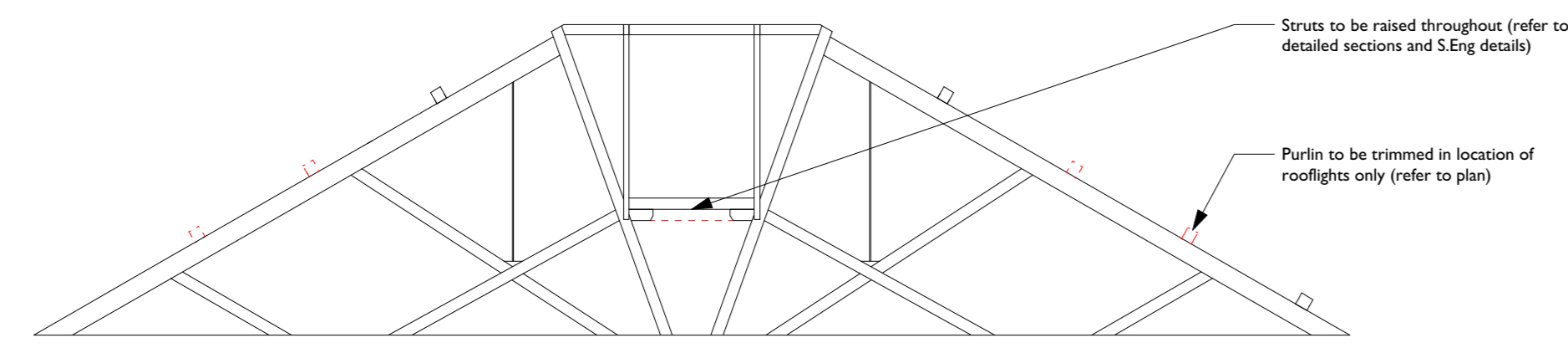


DO NOT SCALE THIS DRAWING USE DIMENSIONS ONLY
 VERIFY ALL DIMENSIONS ON SITE BEFORE COMMENCING ANY WORK OR SHOP DRAWINGS
 INFORM THE ARCHITECT BEFORE ANY WORK STARTS IF THIS DRAWING EXCEEDS THE QUANTITIES IN ANY WAY

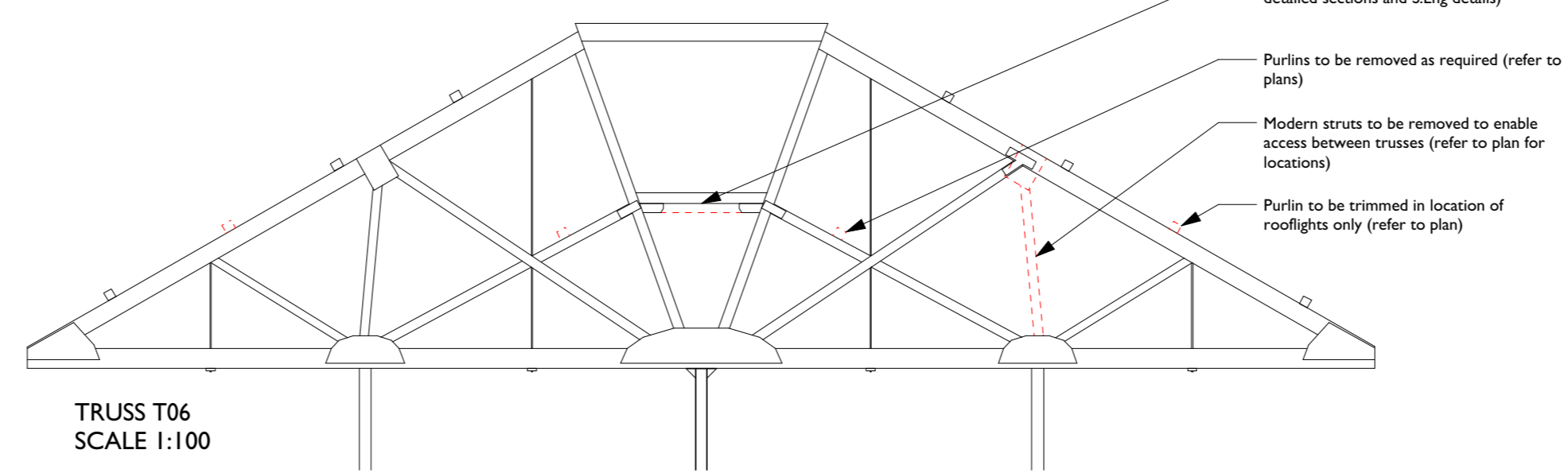
Revision	Date
A	Mar-18

Posts under trusses added and plan updated



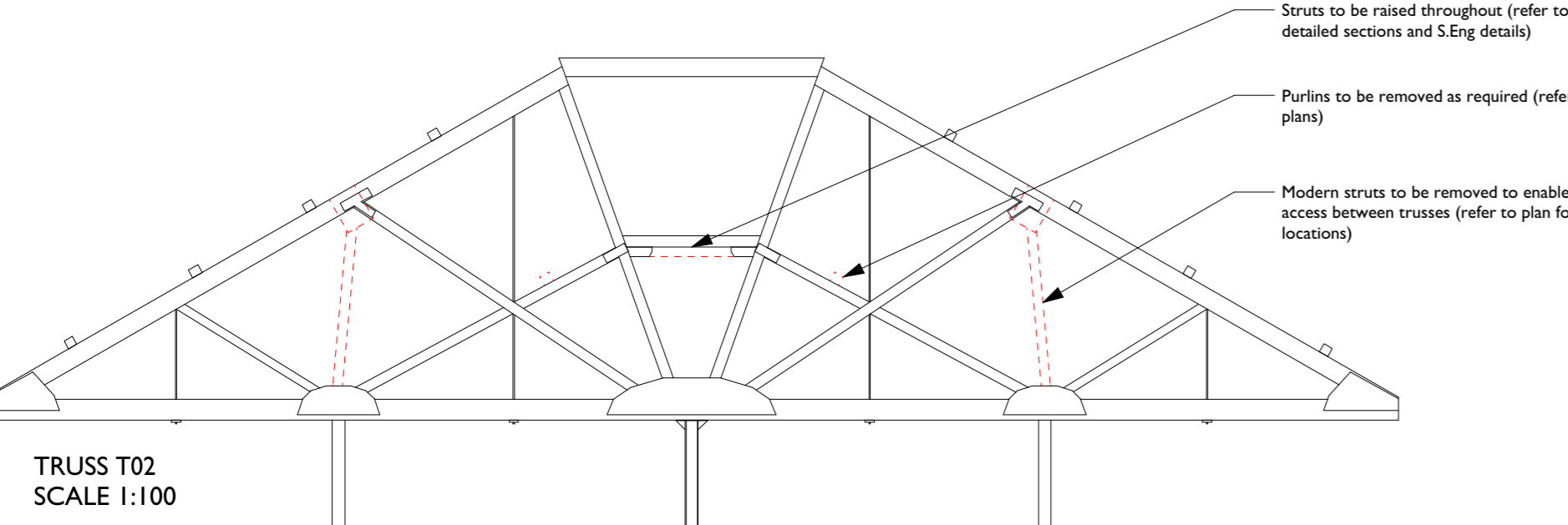
TRUSS T01
SCALE 1:100

Struts to be raised throughout (refer to detailed sections and S.Eng details)
 Purlin to be trimmed in location of rooflights only (refer to plan)



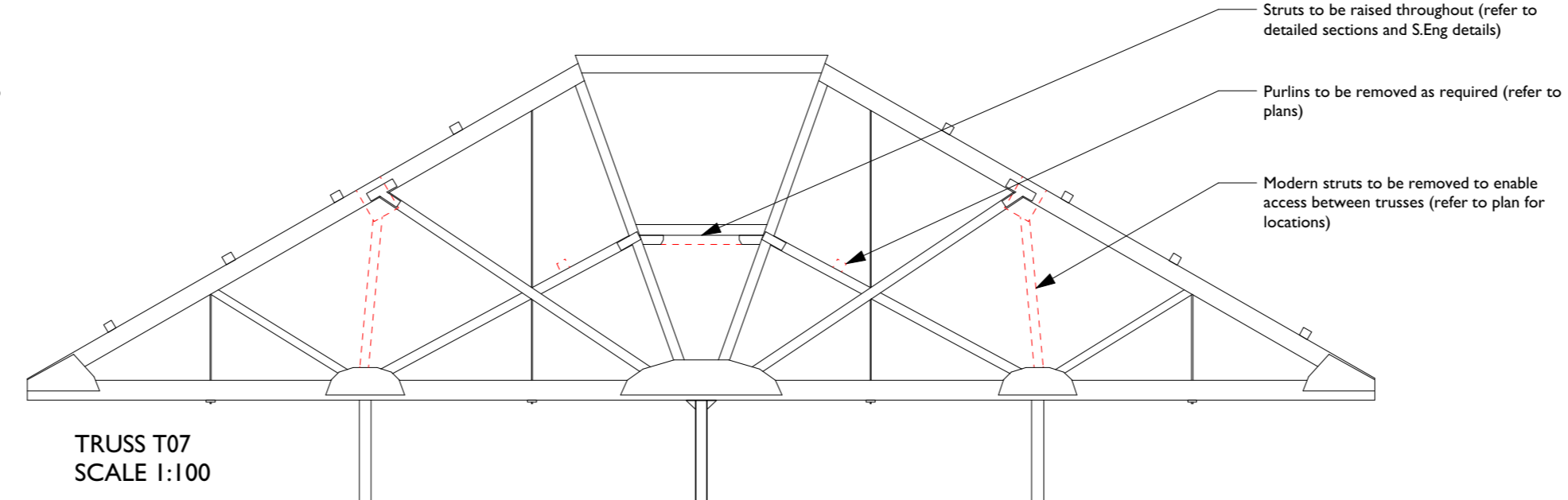
TRUSS T06
SCALE 1:100

Struts to be raised throughout (refer to detailed sections and S.Eng details)
 Purlins to be removed as required (refer to plans)
 Modern struts to be removed to enable access between trusses (refer to plan for locations)
 Purlin to be trimmed in location of rooflights only (refer to plan)



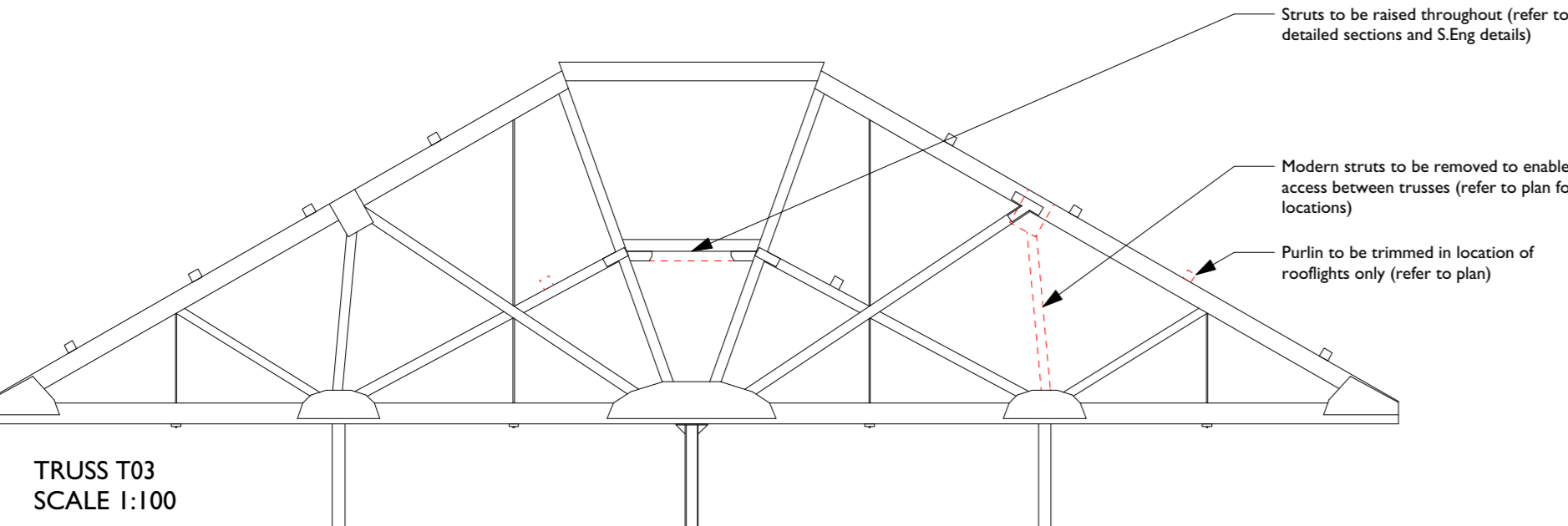
TRUSS T02
SCALE 1:100

Struts to be raised throughout (refer to detailed sections and S.Eng details)
 Purlins to be removed as required (refer to plans)
 Modern struts to be removed to enable access between trusses (refer to plan for locations)



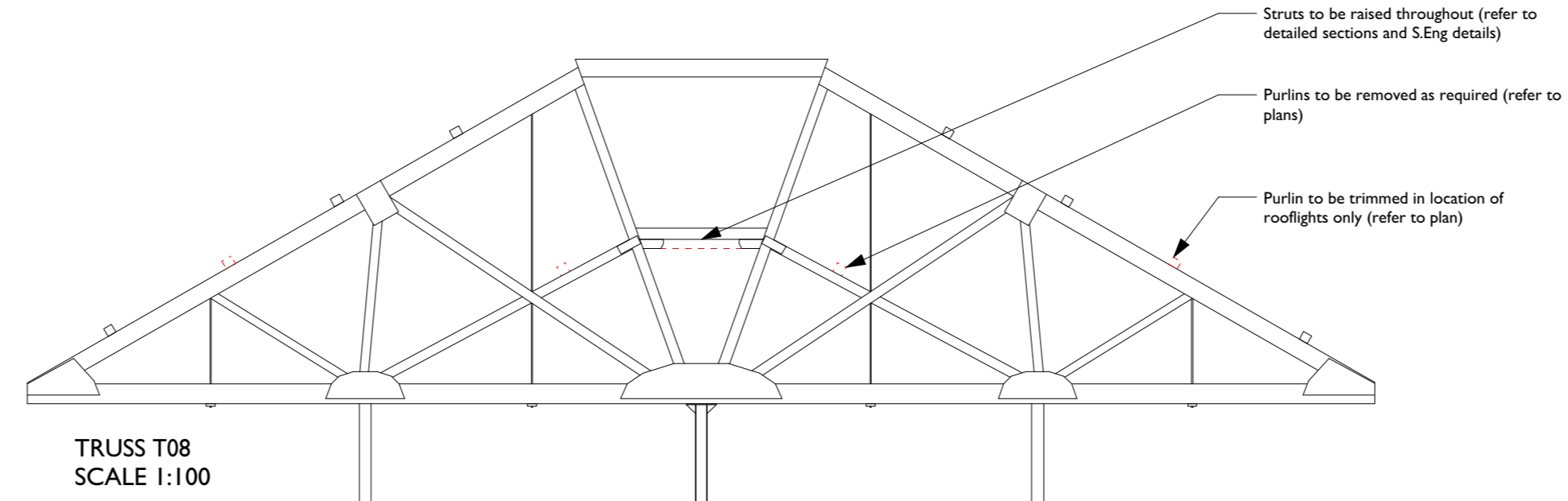
TRUSS T07
SCALE 1:100

Struts to be raised throughout (refer to detailed sections and S.Eng details)
 Purlins to be removed as required (refer to plans)
 Modern struts to be removed to enable access between trusses (refer to plan for locations)



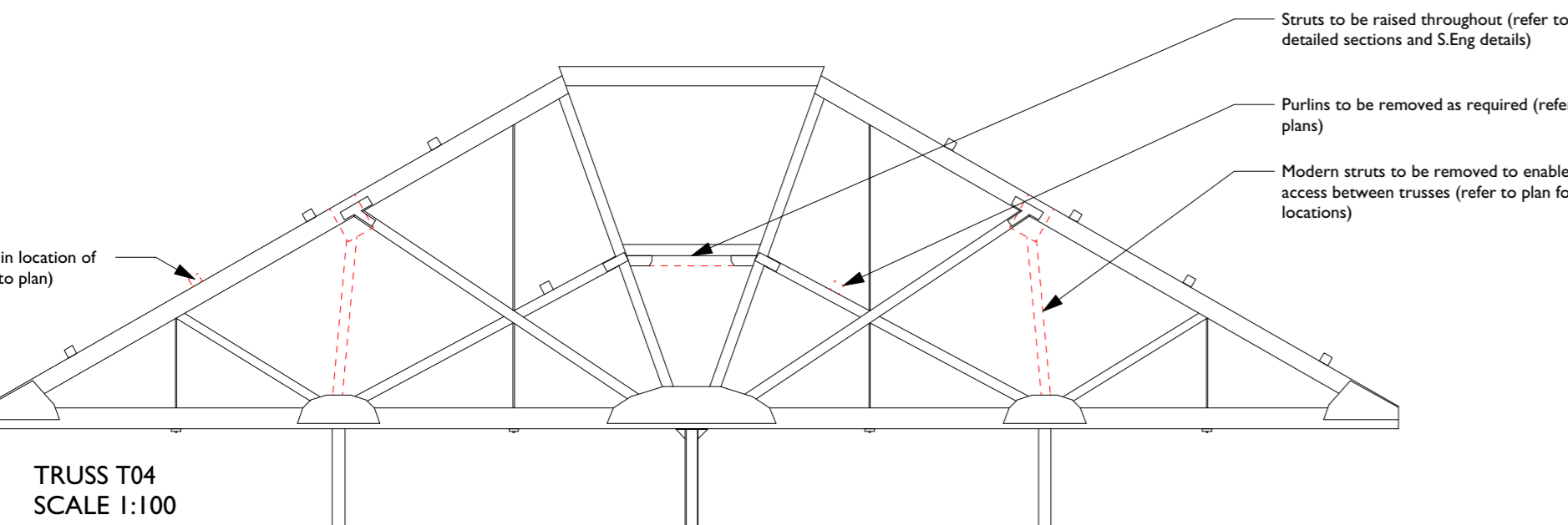
TRUSS T03
SCALE 1:100

Struts to be raised throughout (refer to detailed sections and S.Eng details)
 Modern struts to be removed to enable access between trusses (refer to plan for locations)
 Purlin to be trimmed in location of rooflights only (refer to plan)



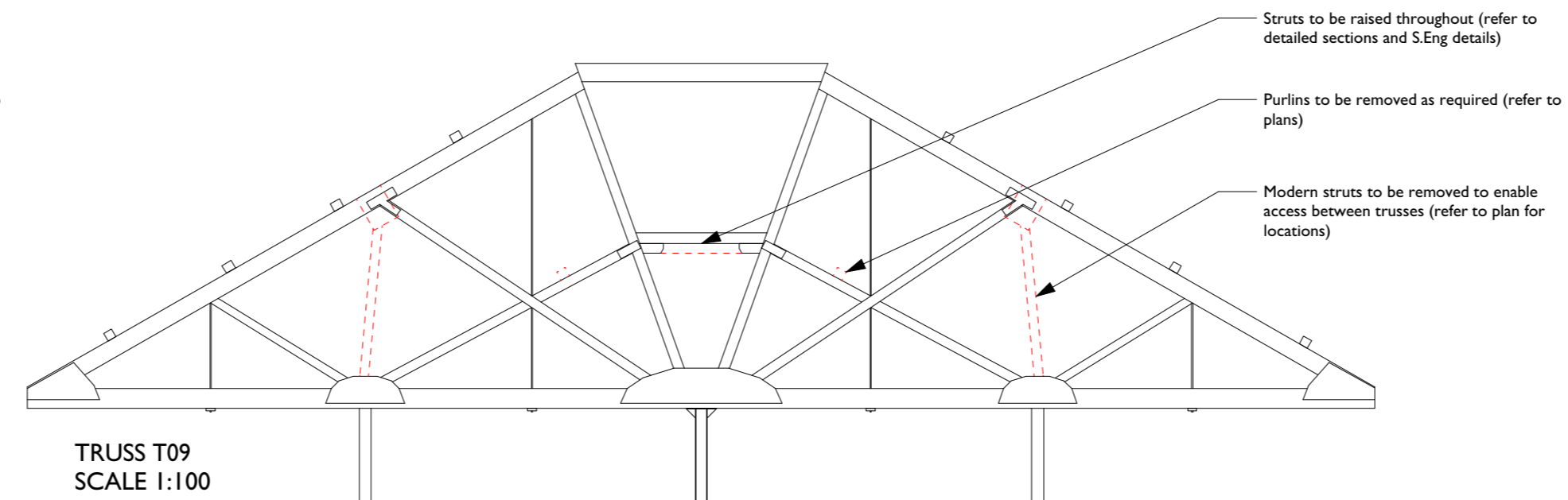
TRUSS T08
SCALE 1:100

Struts to be raised throughout (refer to detailed sections and S.Eng details)
 Purlins to be removed as required (refer to plans)
 Purlin to be trimmed in location of rooflights only (refer to plan)



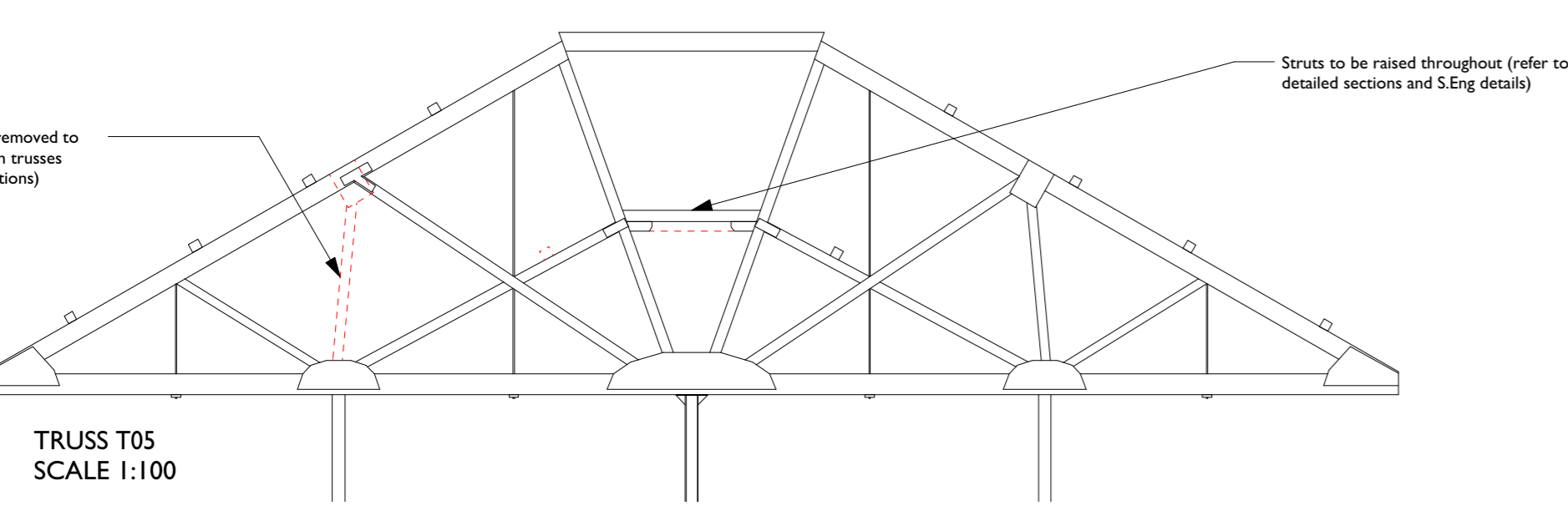
TRUSS T04
SCALE 1:100

Struts to be raised throughout (refer to detailed sections and S.Eng details)
 Purlins to be removed as required (refer to plans)
 Modern struts to be removed to enable access between trusses (refer to plan for locations)



TRUSS T09
SCALE 1:100

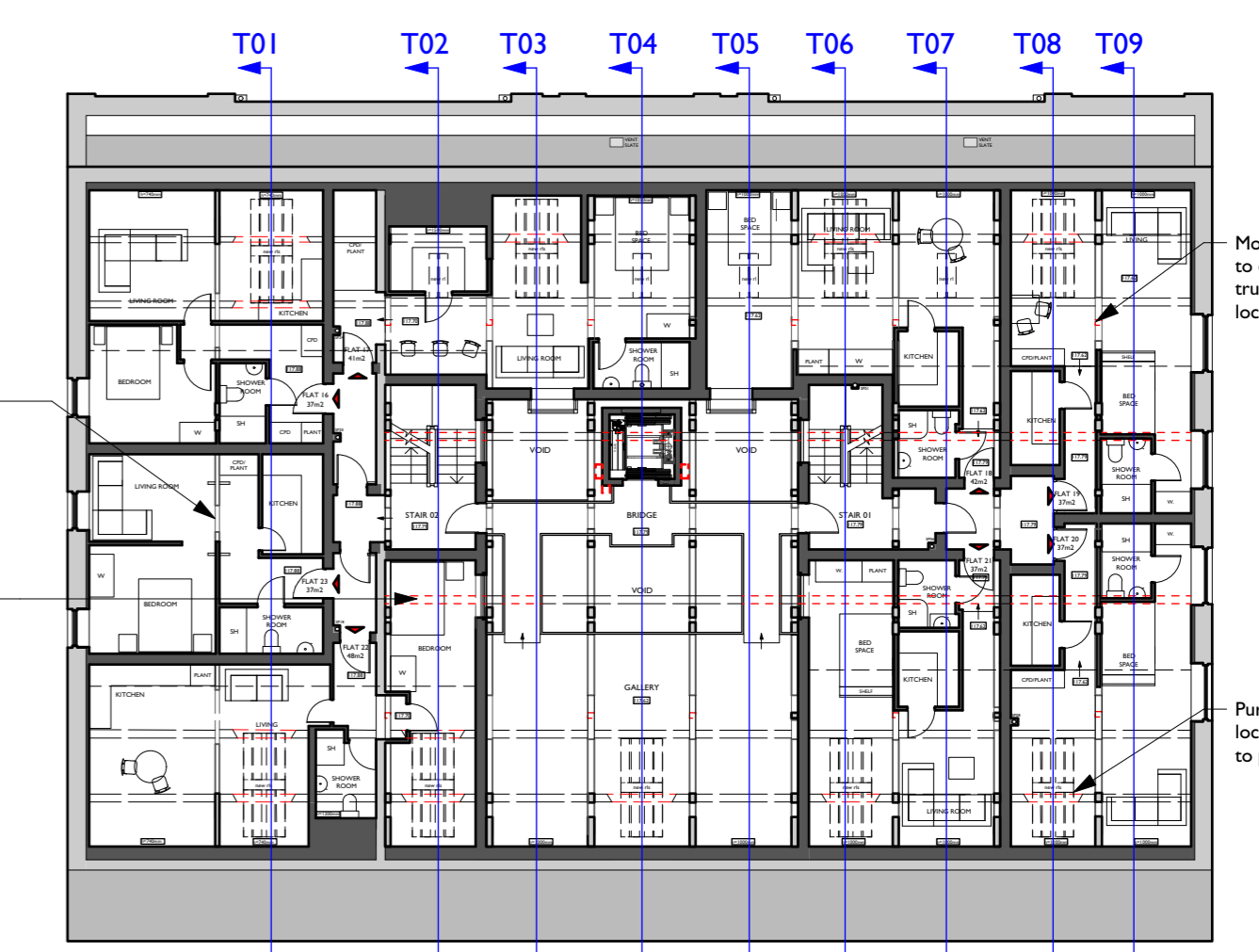
Struts to be raised throughout (refer to detailed sections and S.Eng details)
 Purlins to be removed as required (refer to plans)
 Modern struts to be removed to enable access between trusses (refer to plan for locations)



TRUSS T05
SCALE 1:100

Struts to be raised throughout (refer to detailed sections and S.Eng details)

Modern struts to be removed to enable access between trusses (refer to plan for locations)



KEY PLAN
1:200

Central struts to be raised throughout (refer to detailed sections and S.Eng details)
 Purlins to be removed as required (refer to plans)

Modern struts to be removed to enable access between trusses (refer to plan for locations)

Purlins to be trimmed in location of rooflights only (refer to plan)

----- Demolitions dotted

CLIENT
Morrison Developments

PROJECT
The Old Malt House
Banbury

TITLE
Diagram showing amendments to trusses



Acanthus Clews
architects

SCALE
1:100/200 @ A1

DATE
Feb 2018

JOB N°
17_057

DRAWN
Interlock Surveys / CJW

DRAWING N°
239A

Acanthus House
57 Hightown Road
Banbury • Oxfordshire
OX16 9BE
Tel: 01295 702600
Fax: 01295 702601
architects@acanthusclews.co.uk
www.acanthusclews.co.uk