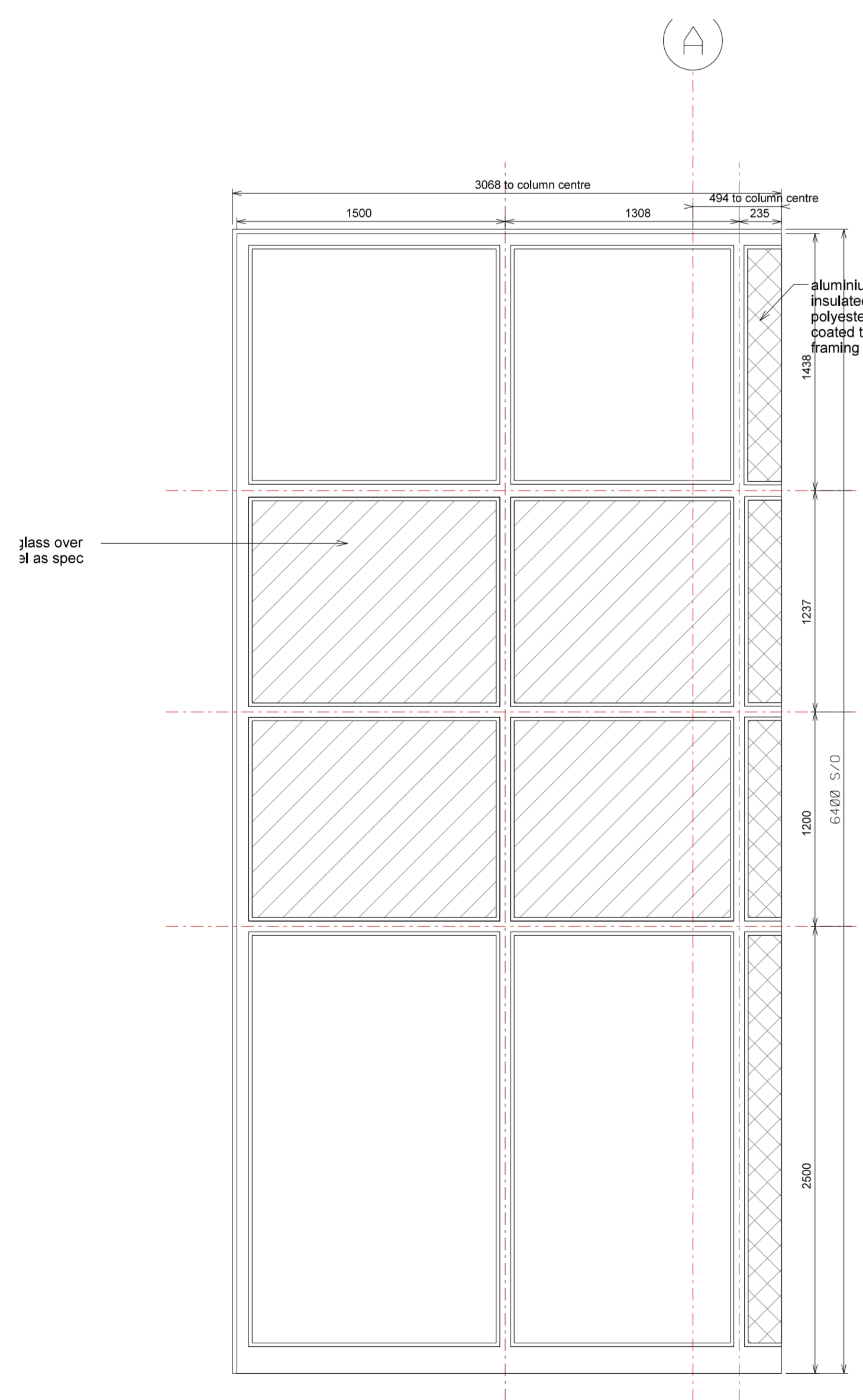
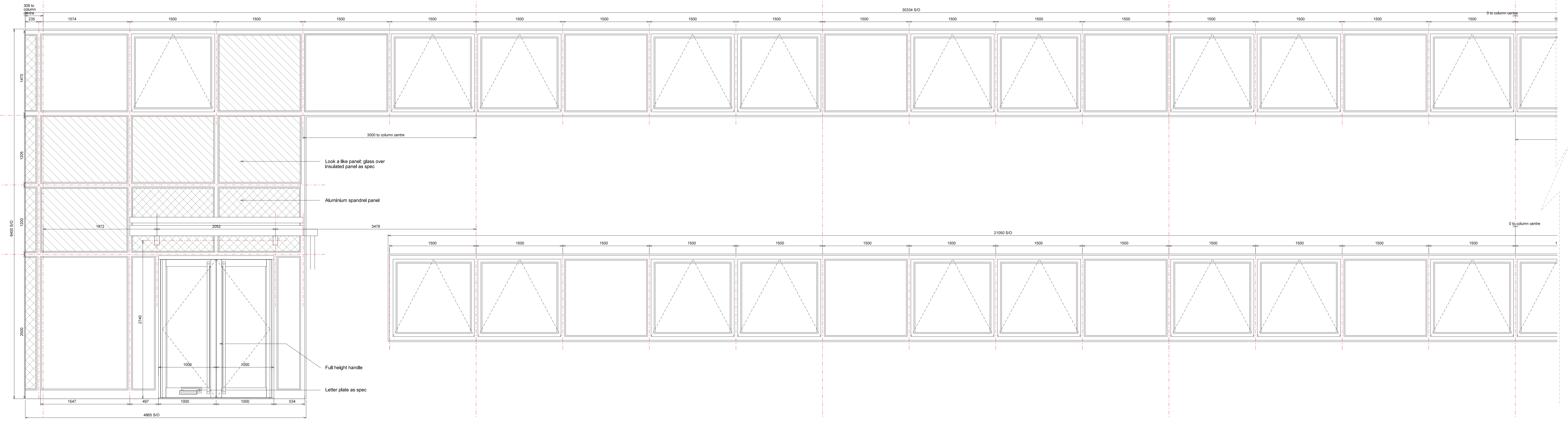


Hazardous Materials.
Working in confined spaces.
Risk of falling.

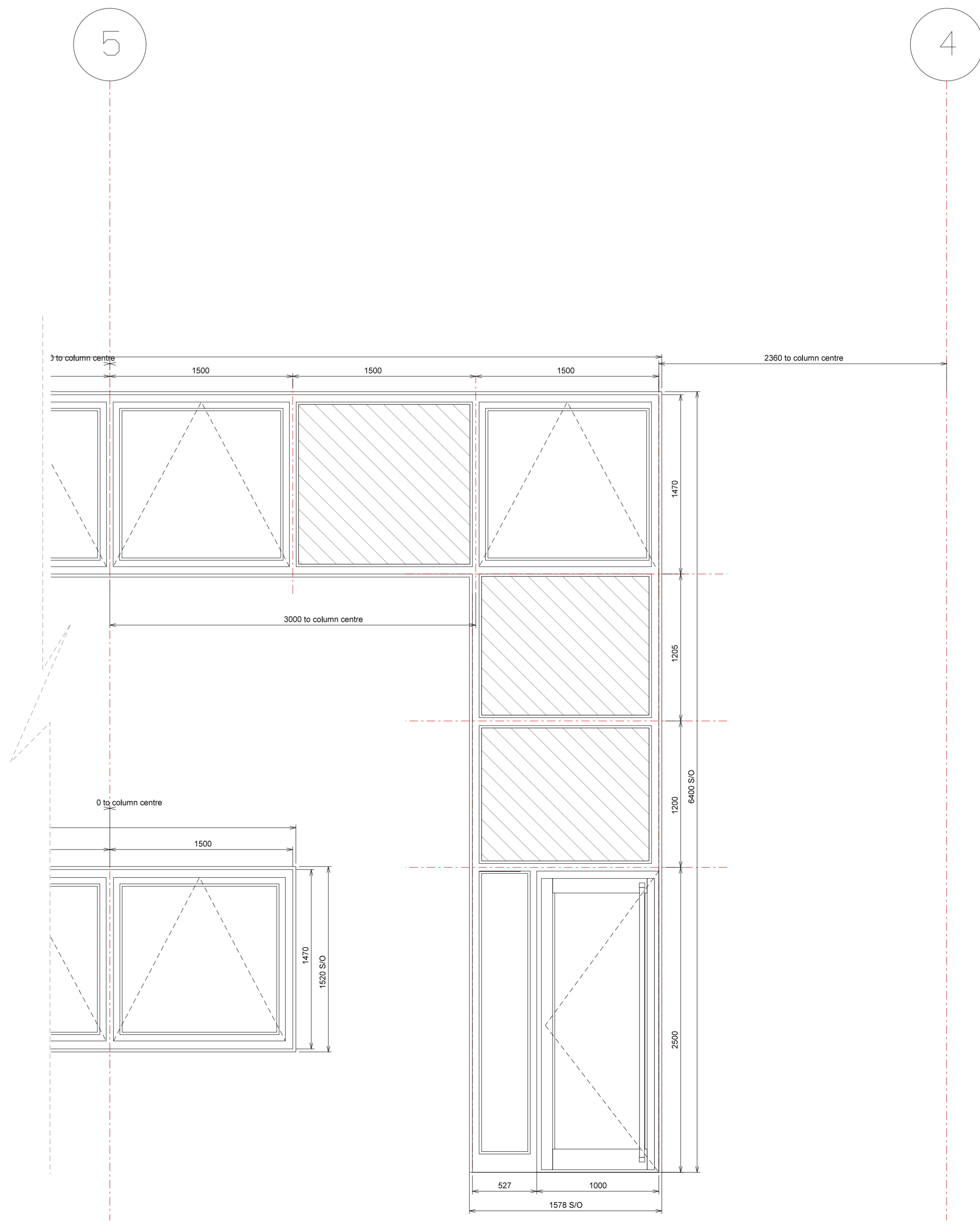
Subject to Statutory Approvals.

Where applicable this drawing is to be read in conjunction with other consultants drawings and with the specification.

All dimensions to be checked on site prior to commencement of work.



PPC Aluminium double glazed windows and curtain walling, colour RAL 7016



C	Corner windows updated	CG	02.02.18
B	Canopy added	RC	25.01.18
A	Glazing updated	CG	18.01.18
Rev	Description	CHK'd	Date

Peer House
 8-14 Venable Street
 London WC1X 8LZ
 Tel +44(0)20 7400 2120
 enquiries@cornisharchitects.com
 www.cornisharchitects.com

Project
**LINK 9 - SKIMMINGDISH LANE
 BICESTER
 PLOT 2**

Dwg Title
**WINDOW SCHEDULE
 UNIT 4**

Status
FOR CONSTRUCTION

Scale
 1:25 @ A0

Dwg No
17007 / WD / 2504