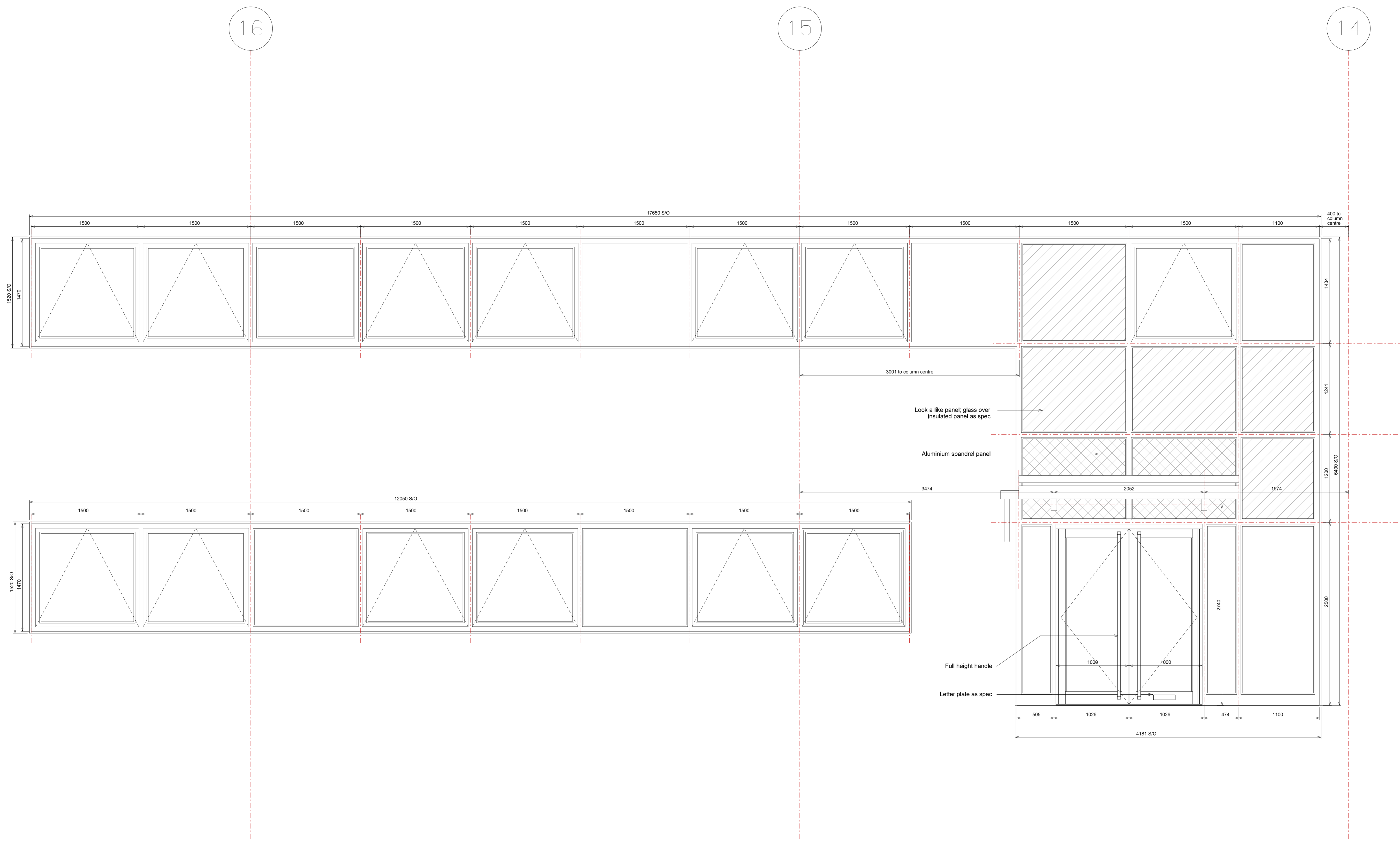


Subject to Statutory Approvals.

Where applicable this drawing is to be read in conjunction with other consultants drawings and with the specification.

All dimensions to be checked on site prior to commencement of work.

CDM Pre-Construction Information	
The following information is provided in pursuance of Regulations 9 (4) of the CDM Regulations 2015. Refer to Cornish Architects CDM design record.	
Hazardous Materials.	
Working in confined spaces.	
Risk of falling.	



PPC Aluminium double glazed windows and curtain walling, colour RAL 7016

D	Opening windows added	CG	05.02.18
C	Corner windows updated	CG	02.02.18
B	Canopy added	RC	25.01.18
A	Glazing updated	CG	18.01.18
Rev	Description	Chkd	Date

Peer House
8-14 Venable Street
London WC1X 8LZ
tel +44(0)20 7400 2120
enquiries@cornisharchitects.com
www.cornisharchitects.com

Project
**LINK 9 - SKIMMINGDISH LANE
BICESTER
PLOT 2**

Dwg Title
**WINDOW SCHEDULE
UNIT 6**

Status
FOR CONSTRUCTION

Scale
1:25 @ A0
Date
30/11/2017

Dwg No
17007 / WD / 2506
Rev
D