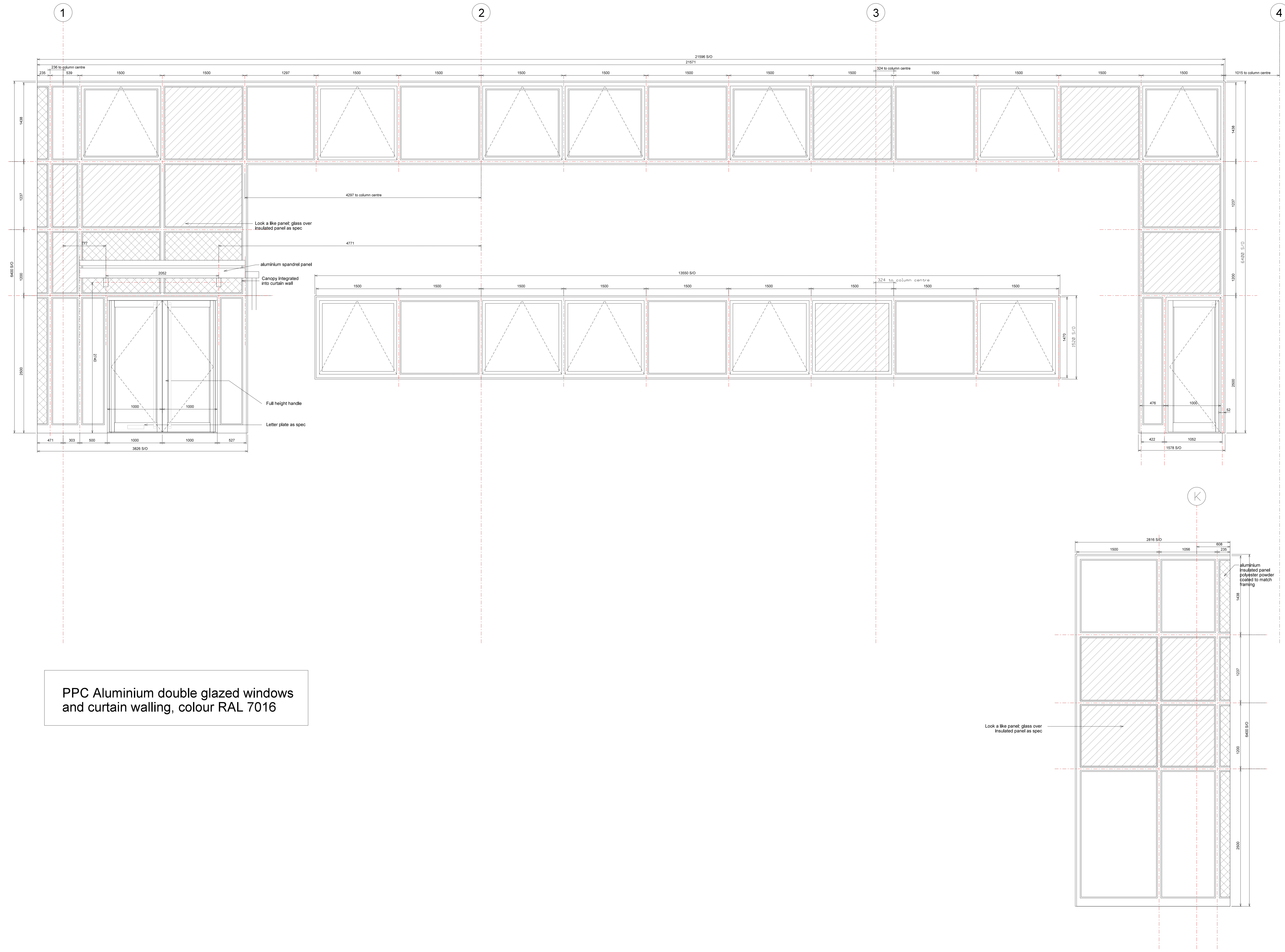


**CDM Pre-Construction Information**  
 The following information is provided in pursuance of Regulations 9 (4) of the CDM Regulations 2015. Refer to Cornish Architects CDM design record.  
 Hazardous Materials.  
 Working in confined spaces.  
 Risk of falling.

Subject to Statutory Approvals.

Where applicable this drawing is to be read in conjunction with other consultants drawings and with the specification.  
 All dimensions to be checked on site prior to commencement of work.



PPC Aluminium double glazed windows and curtain walling, colour RAL 7016

Rev	Description	Chkd	Date
C	Corner windows updated	CG	02.02.18
B	Canopy added	RC	25.01.18
A	Glazing updated	CG	18.01.18

Peer House  
 8-14 Venable Street  
 London WC1X 8LZ  
 Tel +44(0)20 7400 2120  
 enquiries@cornisharchitects.com  
 www.cornisharchitects.com

Project  
**LINK 9 - SKIMMINGDISH LANE  
 BICESTER  
 PLOT 2**

Dwg Title  
**WINDOW SCHEDULE  
 UNIT 2**

Status  
**FOR CONSTRUCTION**

Scale  
 1:25 @ A0  
 Date  
 30/11/2017

Dwg No  
**17007 / WD / 2502**  
 Rev  
**C**