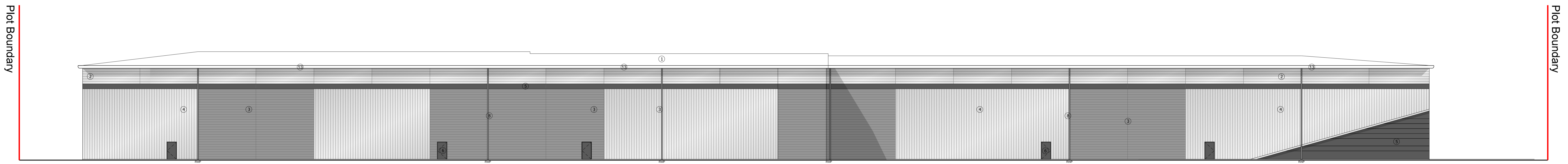


Subject to Statutory Approvals.

All dimensions to be checked on site prior to commencement of work.

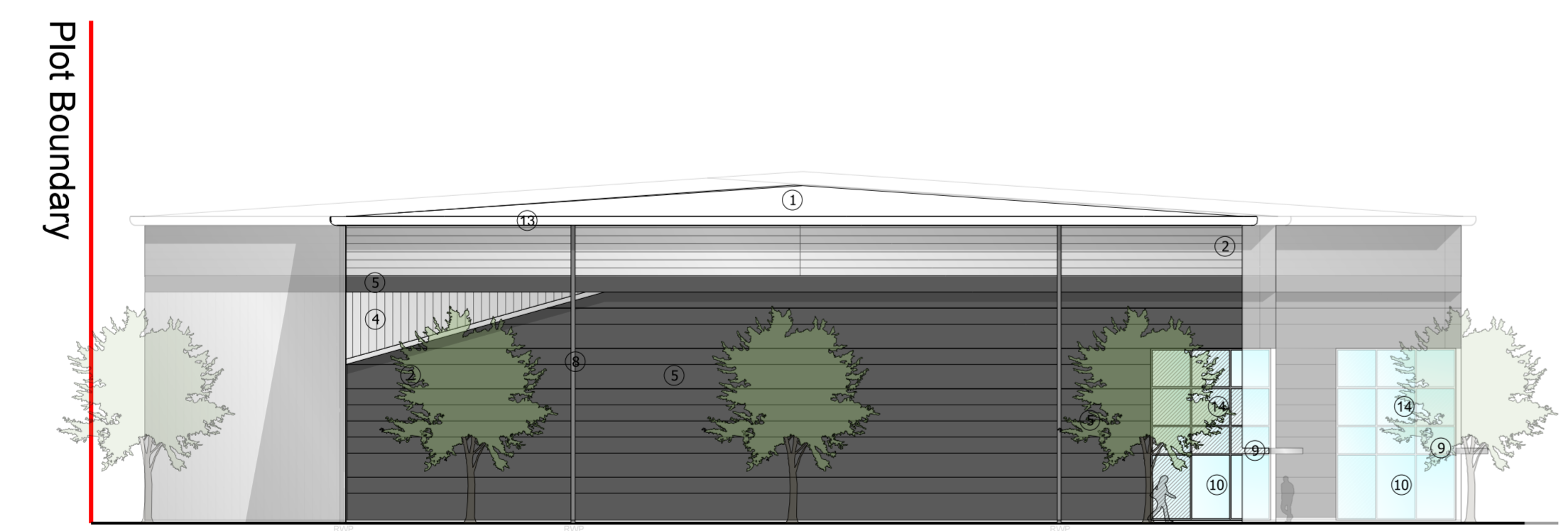
- ① Composite roofing system
- ② Horizontal built-up cladding system - Corus Colorcoat Prisma - Sirius
- ③ Horizontal built-up cladding system - Corus Colorcoat Prisma - Orion
- ④ Vertical built-up cladding system - Corus Colorcoat Prisma - Sirius
- ⑤ Microrib composite cladding - Corus Colorcoat Prisma - Zeus
- ⑥ Steel fire escape door, colour RAL 7016
- ⑦ Loading door, colour RAL 5010
- ⑧ Rainwater pipe, colour Sirius
- ⑨ Main entrance canopy 1.5m projection, painted steel frame
- ⑩ PPC Aluminium double glazed curtain walling, colour RAL 7016
- ⑪ PPC Aluminium double glazed windows, colour RAL 7016
- ⑫ Dock level loading doors, colour RAL 5010 incorporating standard dock shelter
- ⑬ Eaves and verge flashings, colour Zeus
- ⑭ Look-a-like panels - obscured glass
- ⑮ Steel fire escape door, colour RAL 5010



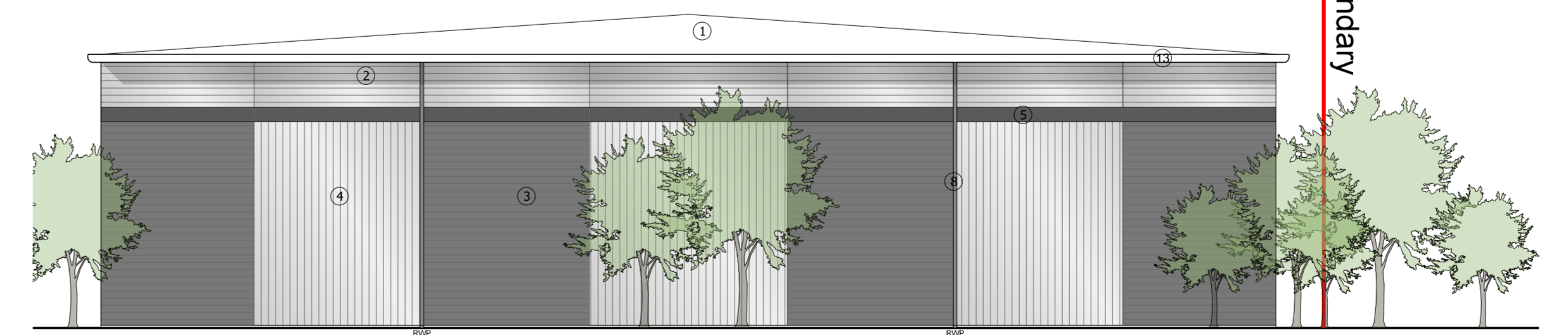
01
2015 West Elevation



02
2015 East Elevation



03
2015 South Elevation



04
2015 North Elevation

Rev	Description	Chkd	Date
	Peer House 8-14 Venable Street London WC1X 8LZ Tel +44(0)20 7400 2120 enquiries@cornisharchitects.com www.cornisharchitects.com		

Project
**LINK 9 - SKIMMINGDISH LANE
BICESTER
PLOT 2**

Dwg Title
**Elevations - Unit D, E, F & G
Zone 02**

Status
PLANNING

Scale
1:200 @ A0

Date
09/08/2017

Dwg No
17007 / TP / 2015