

Subject to Statutory Approvals.

All dimensions to be checked on site prior to commencement of work.

- ① Composite roofing system
- ② Horizontal built-up cladding system - Corus Colorcoat Prisma - Sirius
- ③ Horizontal built-up cladding system - Corus Colorcoat Prisma - Orion
- ④ Vertical built-up cladding system - Corus Colorcoat Prisma - Sirius
- ⑤ Microrib composite cladding - Corus Colorcoat Prisma - Zeus
- ⑥ Steel fire escape door, colour RAL 7016
- ⑦ Loading door, colour RAL 5010
- ⑧ Rainwater pipe, colour Sirius
- ⑨ Main entrance canopy 1.5m projection, painted steel frame
- ⑩ PPC Aluminium double glazed curtain walling, colour RAL 7016
- ⑪ PPC Aluminium double glazed windows, colour RAL 7016
- ⑫ Dock level loading doors, colour RAL 5010 incorporating standard dock shelter
- ⑬ Eaves and verge flashings, colour Zeus
- ⑭ Look-a-like panels - obscured glass
- ⑮ Steel fire escape door, colour RAL 5010



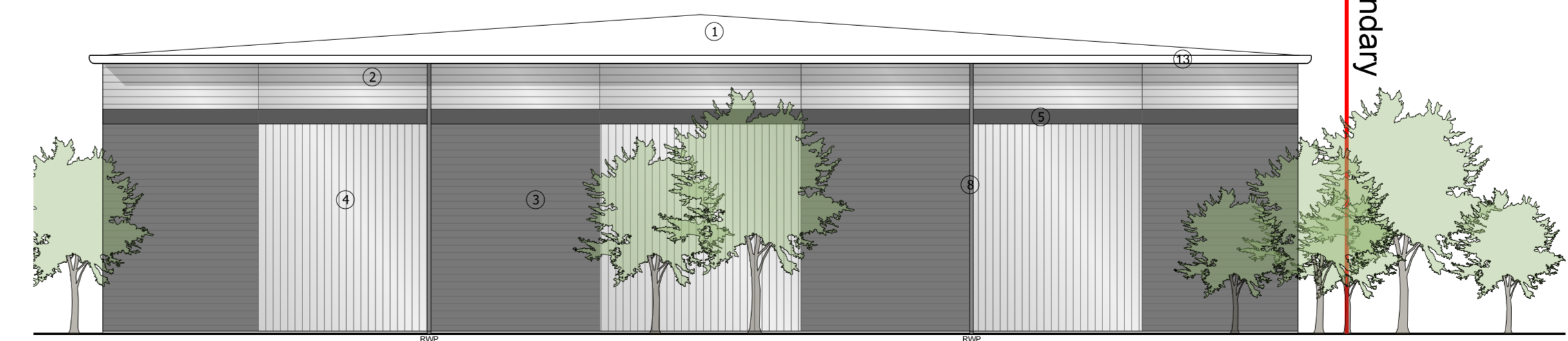
01 2015 West Elevation



02 2015 East Elevation



03 2015 South Elevation



04 2015 North Elevation

Rev	Description	Chkd	Date
A	F and G west elevation revised	RC	30.10.17

Project: Peer House
 8-14 Venable Street
 London WC1X 8LZ
 Tel: +44(0)20 7400 2120
 enquiries@cornisharchitects.com
 www.cornisharchitects.com

Project: LINK 9 - SKIMMINGDISH LANE BICESTER PLOT 2

Dwg Title: Elevations - Unit D, E, F & G Zone 02

Status: PLANNING

Scale: 1:200 @ A0 Date: 09/08/2017

Dwg No: 17007 / TP / 2015 Rev: A