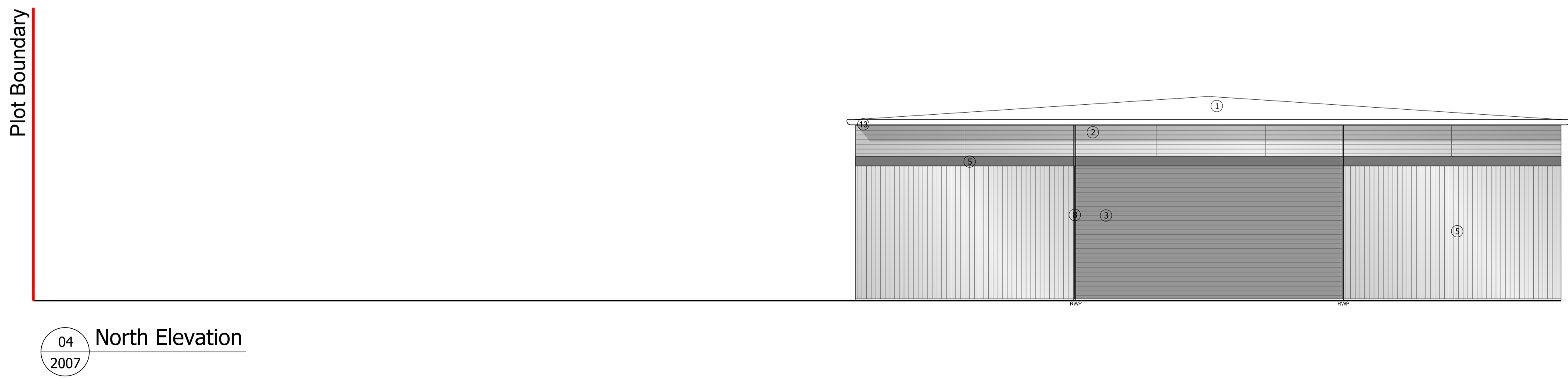
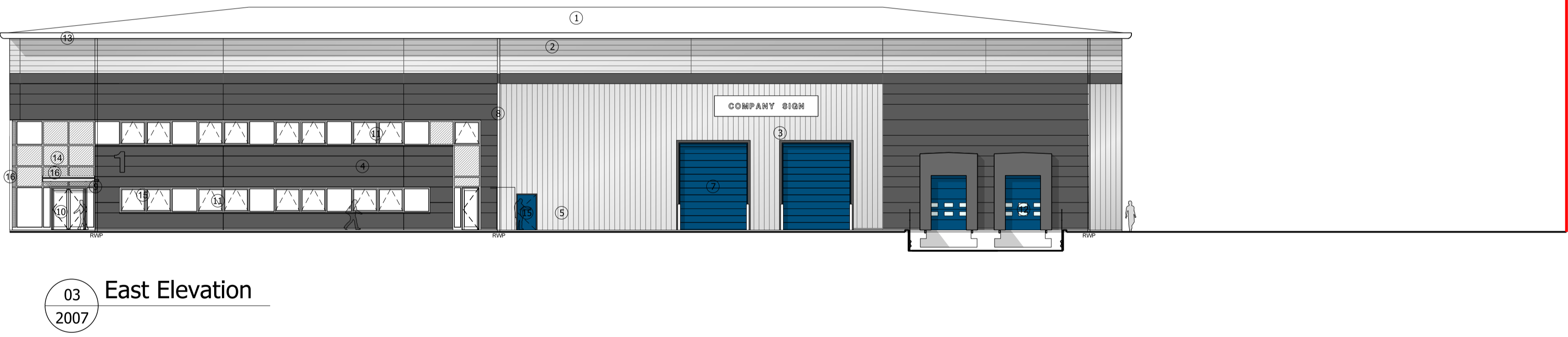
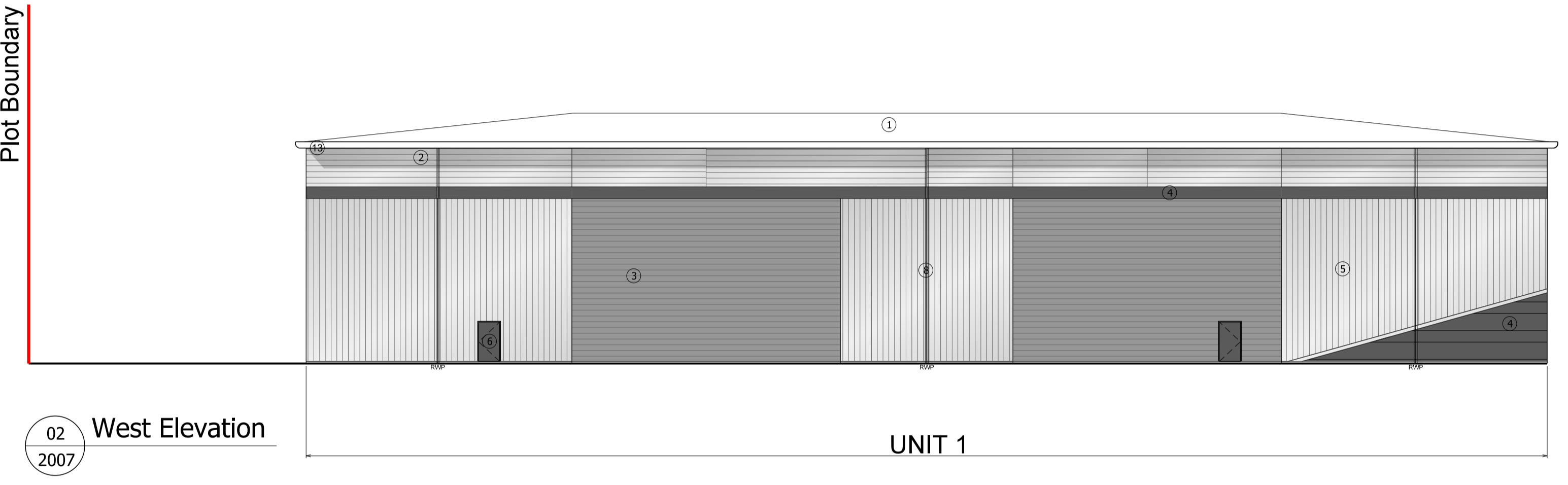
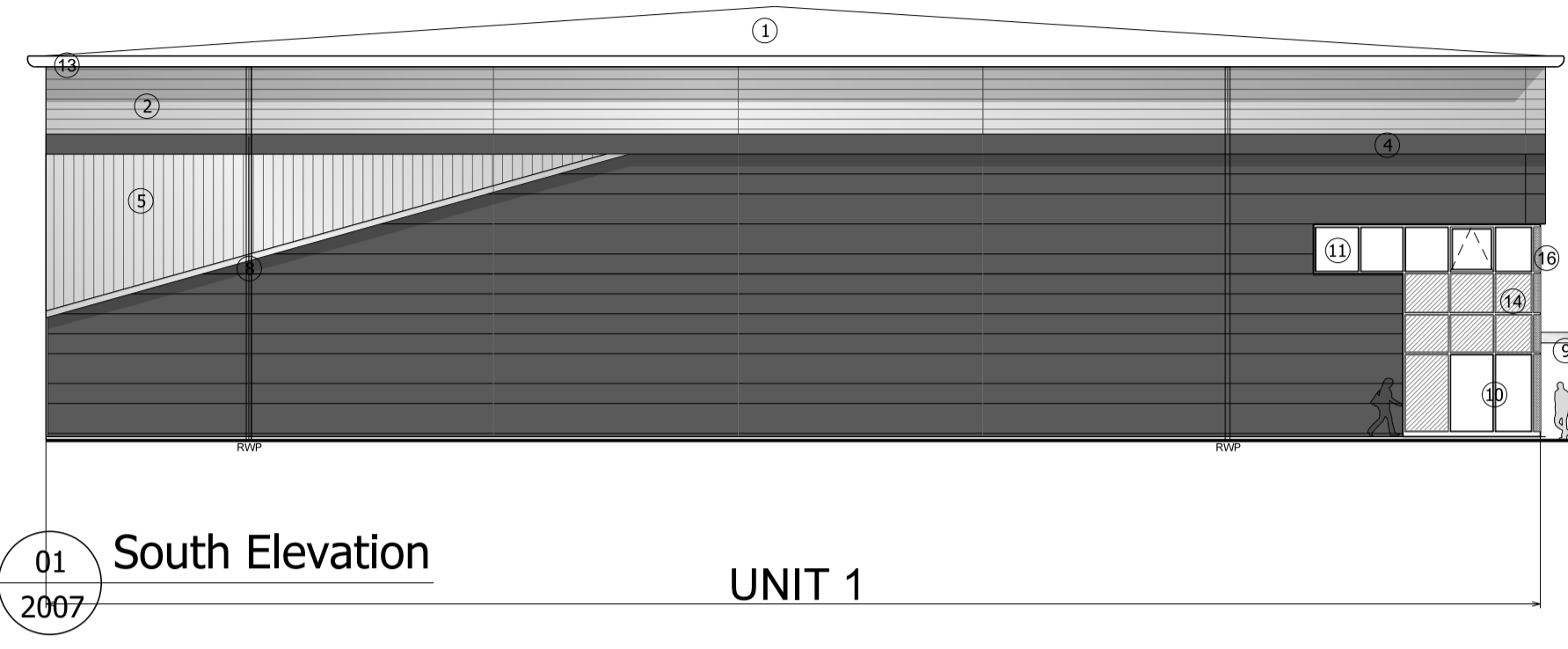


- ① Composite roofing system
- ② Horizontal built-up cladding system - Corus Colorcoat Prisma - Sirius
- ③ Horizontal built-up cladding system - Corus Colorcoat Prisma - Orion
- ④ Microrib composite cladding system - Corus Colorcoat Prisma - Zeus
- ⑤ Vertical built-up cladding system - Corus Colorcoat Prisma - Sirius
- ⑥ Steel fire escape door, colour RAL 7016
- ⑦ Loading door, colour RAL 5010
- ⑧ Rainwater pipe, colour Sirius
- ⑨ Main entrance canopy 1.5m projection, painted steel frame
- ⑩ PPC Aluminium double glazed curtain walling, colour RAL 7016
- ⑪ PPC Aluminium double glazed windows, colour RAL 7016
- ⑫ Dock level loading doors, colour RAL 5010 incorporating standard dock shelter
- ⑬ Eaves and verge flashings, colour Sirius
- ⑭ Look-a-like panels - obscured glass
- ⑮ Steel fire escape door, colour RAL 5010
- ⑯ Aluminium insulated panel polyester powder coated to match framig



Plot Boundary

Plot Boundary

Plot Boundary

Plot Boundary

Subject to Statutory Approvals.

All dimensions to be checked on site prior to commencement of work.

Rev	Description	Chkd	Date
A	Windows, canopy and eaves colour updated	CG	01.02.18

Peer House
8 -14 Verulam Street
London WC1X 8LZ
tel +44(0)20 7400 2120
enquiries@cornisharchitects.com
www.cornisharchitects.com

cornisharchitects

Project
**LINK 9 - SKIMMINGDISH LANE
BICESTER
PLOT 2**

Org Title
**Elevations - Unit A
Zone 02**

Status
PLANNING



Scale	1:200 @ A1	Date	09/08/2017
Org No	17007 / TP /2007	Rev	A