

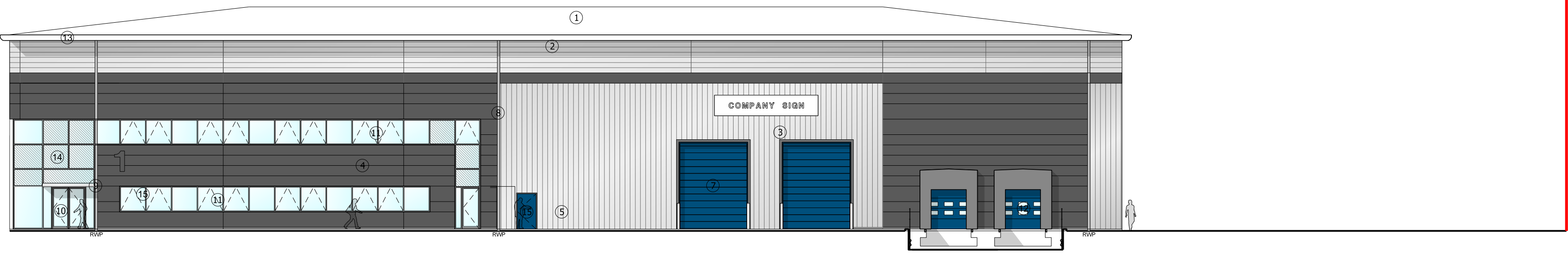
- ① Composite roofing system
- ② Horizontal built-up cladding system - Corus Colorcoat Prisma - Sirius
- ③ Horizontal built-up cladding system - Corus Colorcoat Prisma - Orion
- ④ Microrib composite cladding system - Corus Colorcoat Prisma - Zeus
- ⑤ Vertical built-up cladding system - Corus Colorcoat Prisma - Sirius
- ⑥ Steel fire escape door, colour RAL 7016
- ⑦ Loading door, colour RAL 5010
- ⑧ Rainwater pipe, colour Sirius
- ⑨ Main entrance canopy 1.5m projection, painted steel frame
- ⑩ PPC Aluminium double glazed curtain walling, colour RAL 7016
- ⑪ PPC Aluminium double glazed windows, colour RAL 7016
- ⑫ Dock level loading doors, colour RAL 5010 incorporating standard dock shelter
- ⑬ Eaves and verge flashings, colour Zeus
- ⑭ Look-a-like panels - obscured glass
- ⑮ Steel fire escape door, colour RAL 5010



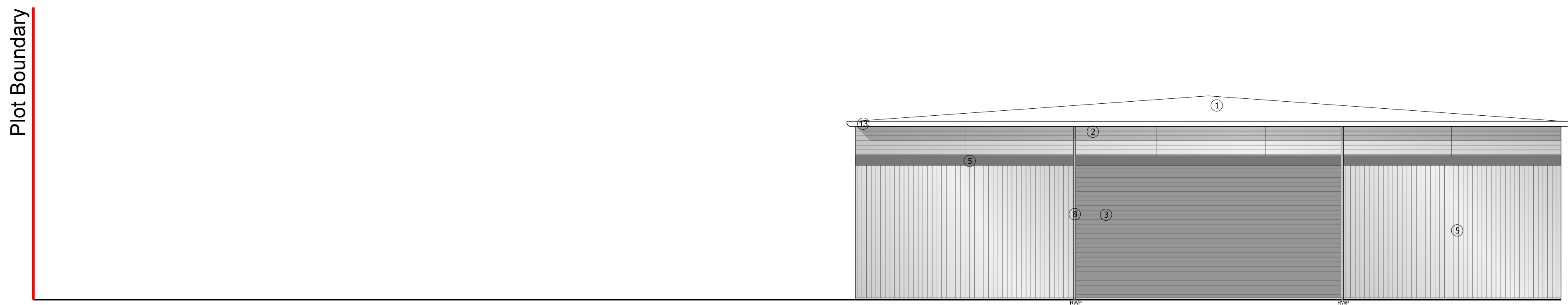
01 South Elevation
2007



02 West Elevation
2007



03 East Elevation
2007



04 North Elevation
2007

Plot Boundary

Plot Boundary

Subject to Statutory Approvals.

All dimensions to be checked on site prior to commencement of work.

Rev	Description	Chkd	Date

Peer House
8 -14 Verulam Street
London WC1X 8LZ
tel +44(0)20 7400 2120
enquiries@cornisharchitects.com
www.cornisharchitects.com

cornish architects

Project
**LINK 9 - SKIMMINGDISH LANE
BICESTER
PLOT 2**

Org Title
**Elevations - Unit A
Zone 02**

Status
PLANNING



Scale
1:200 @ A1
Date
09/08/2017

Org No
17007 / TP /2007
Rev