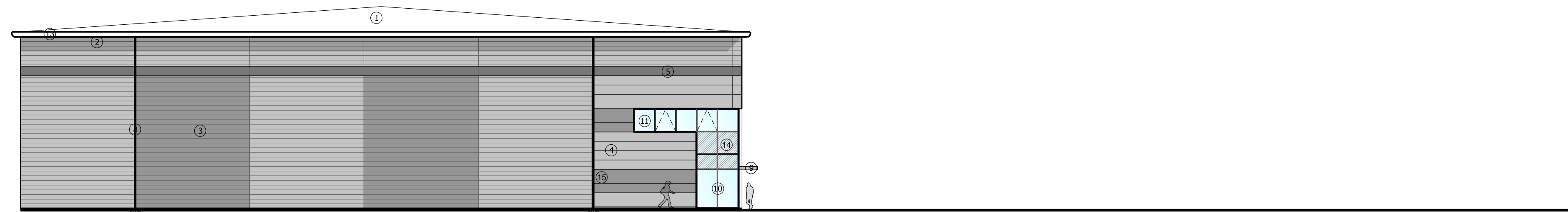


Subject to Statutory Approvals.

All dimensions to be checked on site prior to commencement of work.

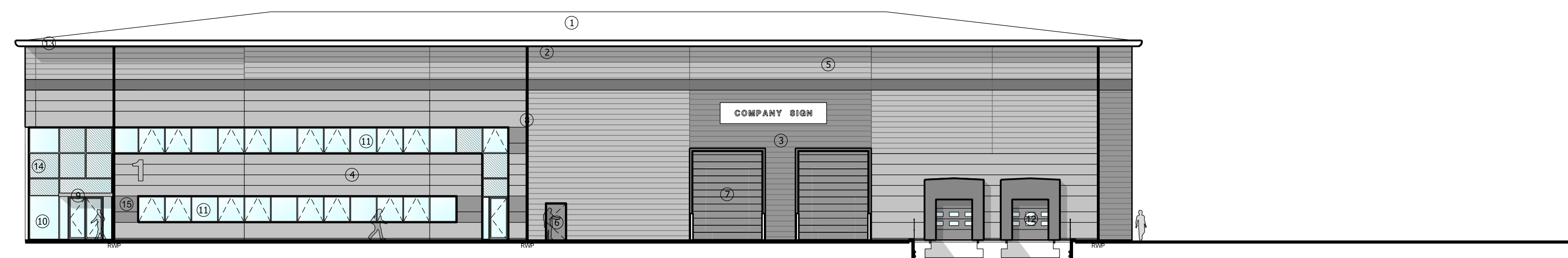
- ① Composite roofing system
- ② Horizontal built-up cladding system - Corus Colorcoat Prisma - Sirius
- ③ Horizontal built-up cladding system - Corus Colorcoat Prisma - Orion
- ④ Microrib composite cladding system - Corus Colorcoat Prisma - Sirius
- ⑤ Microrib composite cladding feature band - Corus Colorcoat Prisma - Zeus
- ⑥ Steel fire escape door, colour RAL 7016
- ⑦ Loading door, colour RAL 7016
- ⑧ Rainwater pipe, colour Sirius
- ⑨ Main entrance canopy 1.5m projection, painted steel frame
- ⑩ PPC Aluminium double glazed curtain walling, colour RAL 7016
- ⑪ PPC Aluminium double glazed windows, colour RAL 7016
- ⑫ Dock level loading doors, colour RAL 7016 incorporating standard dock shelter
- ⑬ Eaves and verge flashings, colour Zeus
- ⑭ Look-a-like panels - obscured glass
- ⑮ Microrib composite cladding system - Corus Colorcoat Prisma - Orion



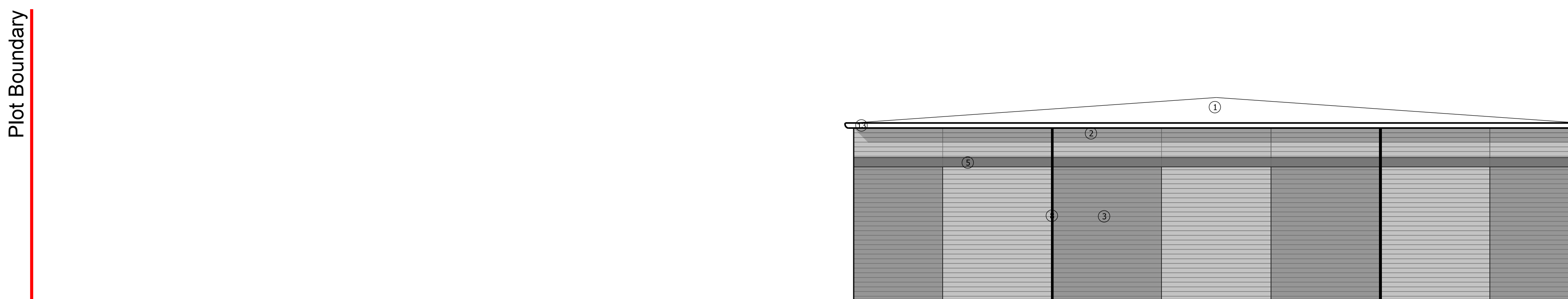
01 South Elevation
007



02 West Elevation
007



03 East Elevation
007



04 North Elevation
007

Plot Boundary

Plot Boundary

Plot Boundary

Plot Boundary

Rev	Description	Chkd	Date
A	Windows at ground floor	AS	11.08.17

Peer House
8 -14 Verulam Street
London WC1X 8LZ

tel +44(0)20 7400 2120

enquiries@cornisharchitects.com
www.cornisharchitects.com

cornisharchitects

Project
**LINK 9 - SKIMMINGDISH LANE
BICESTER
PLOT 2**

Drwg Title
**Elevations - Unit A
Zone 02**

Status
PLANNING

0 10 m

Scale 1:200 @ A1 Date 09/08/2017

Drwg No 17007 / TP / 007 Rev A

Copyright of Cornish Architects ©