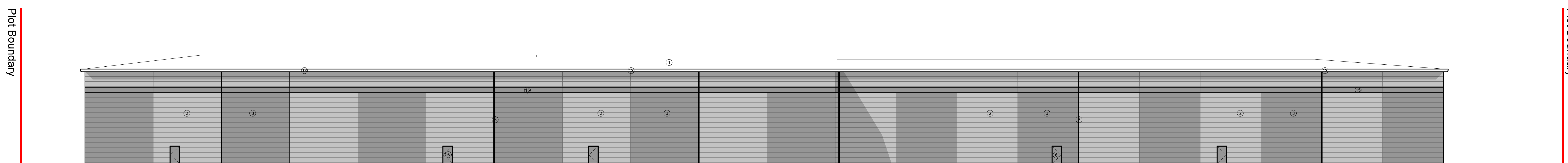


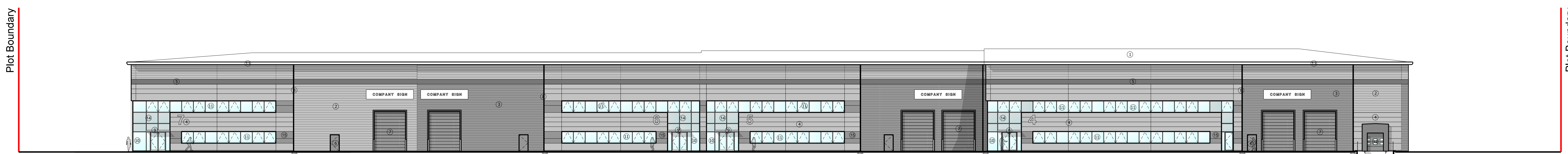
Subject to Statutory Approvals.

All dimensions to be checked on site prior to commencement of work.

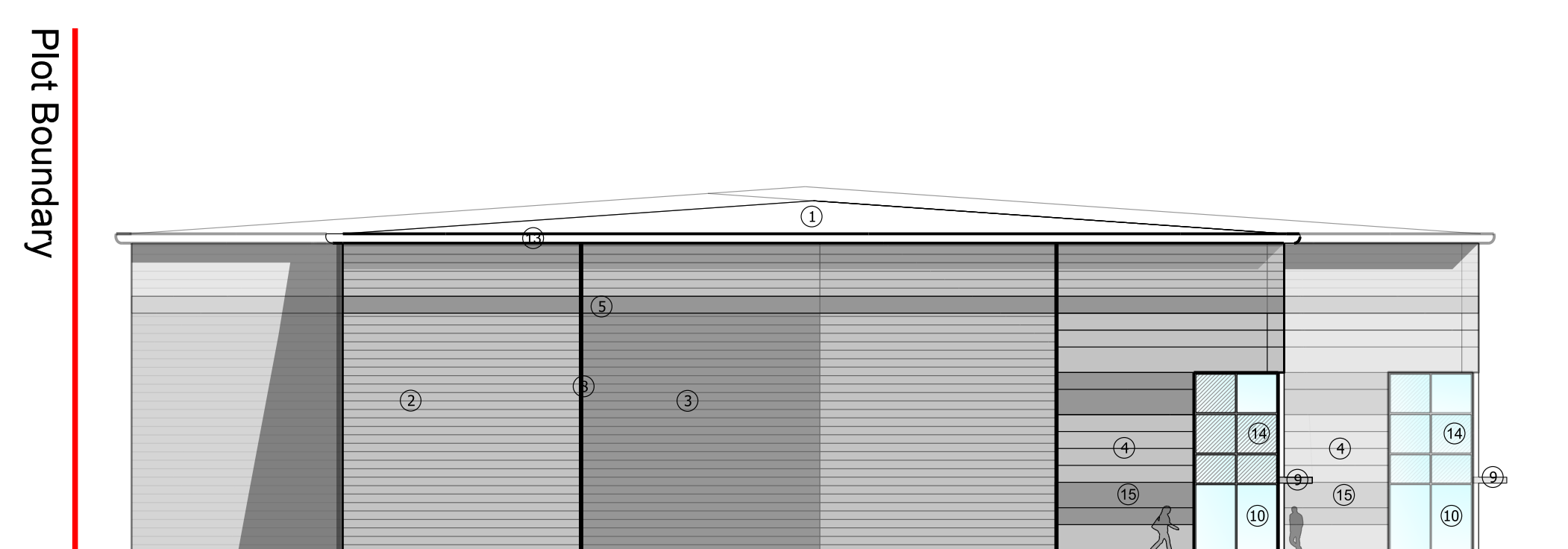
- ① Composite roofing system
- ② Horizontal built-up cladding system - Corus Colorcoat Prisma - Sirius
- ③ Horizontal built-up cladding system - Corus Colorcoat Prisma - Orion
- ④ Microrib composite cladding system - Corus Colorcoat Prisma - Sirius
- ⑤ Microrib composite cladding feature band - Corus Colorcoat Prisma - Zeus
- ⑥ Steel fire escape door, colour RAL 7016
- ⑦ Loading door, colour RAL 7016
- ⑧ Rainwater pipe, colour Sirius
- ⑨ Main entrance canopy 1.5m projection, painted steel frame
- ⑩ PPC Aluminium double glazed curtain walling, colour RAL 7016
- ⑪ PPC Aluminium double glazed windows, colour RAL 7016
- ⑫ Dock level loading doors, colour RAL 7016 incorporating standard dock shelter
- ⑬ Eaves and verge flashings, colour Zeus
- ⑭ Look-a-like panels - obscured glass
- ⑮ Microrib composite cladding system - Corus Colorcoat Prisma - Orion



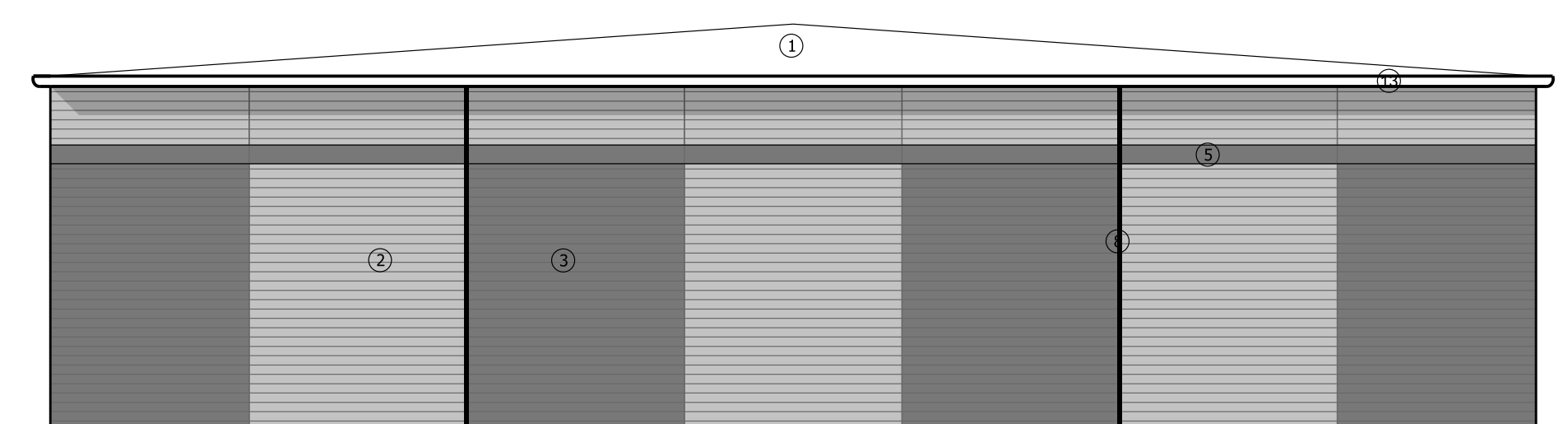
01 West Elevation  
015



02 East Elevation  
015



03 South Elevation  
015



04 North Elevation  
015

Rev	Description	AS	11.06.17
A	Windows at ground floor	AS	11.06.17

Project: Peer House  
 8-14 Vindham Street  
 London WC1X 8LZ  
 Tel: +44(0)20 7400 2120  
 enquiries@cornisharchitects.com  
 www.cornisharchitects.com

Project  
LINK 9 - SKIMMINGDISH LANE  
BICESTER  
PLOT 2

Dwg Title  
Elevations - Unit D, E, F & G  
Zone 02

Status  
PLANNING

Scale  
1:200 @ A0

Date  
09/08/2017

Dwg No  
17007 / TP / 015

Rev  
A

Copyright of Cornish Architects

cornisharchitects