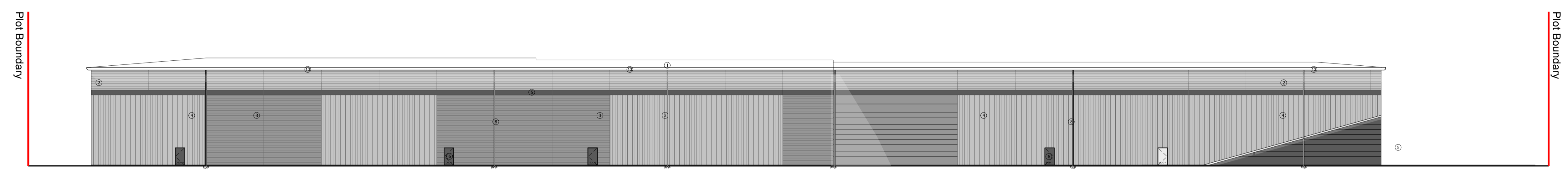


Subject to Statutory Approvals.

All dimensions to be checked on site prior to commencement of work.

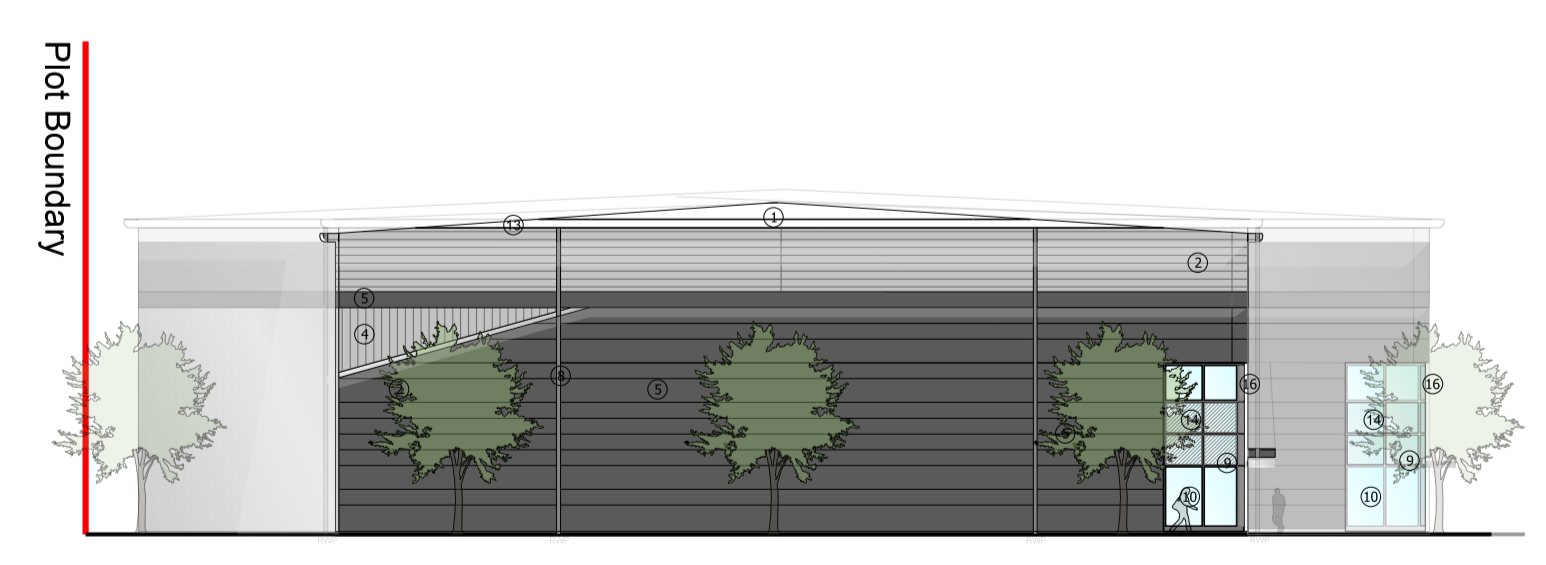
- ① Composite roofing system
- ② Horizontal built-up cladding system - Corus Colorcoat Prisma - Sirius
- ③ Horizontal built-up cladding system - Corus Colorcoat Prisma - Orion
- ④ Vertical built-up cladding system - Corus Colorcoat Prisma - Sirius
- ⑤ Microrib composite cladding - Corus Colorcoat Prisma - Zeus
- ⑥ Steel fire escape door, colour RAL 7016
- ⑦ Loading door, colour RAL 5010
- ⑧ Rainwater pipe, colour Sirius
- ⑨ Main entrance canopy 1.5m projection, painted steel frame
- ⑩ PPC Aluminium double glazed curtain walling, colour RAL 7016
- ⑪ PPC Aluminium double glazed windows, colour RAL 7016
- ⑫ Dock level loading doors, colour RAL 5010 incorporating standard dock shelter
- ⑬ Eaves and verge flashings, colour Sirius
- ⑭ Look-a-like panels - obscured glass
- ⑮ Steel fire escape door, colour RAL 5010
- ⑯ Aluminium insulated panel polyester powder coated to match framig



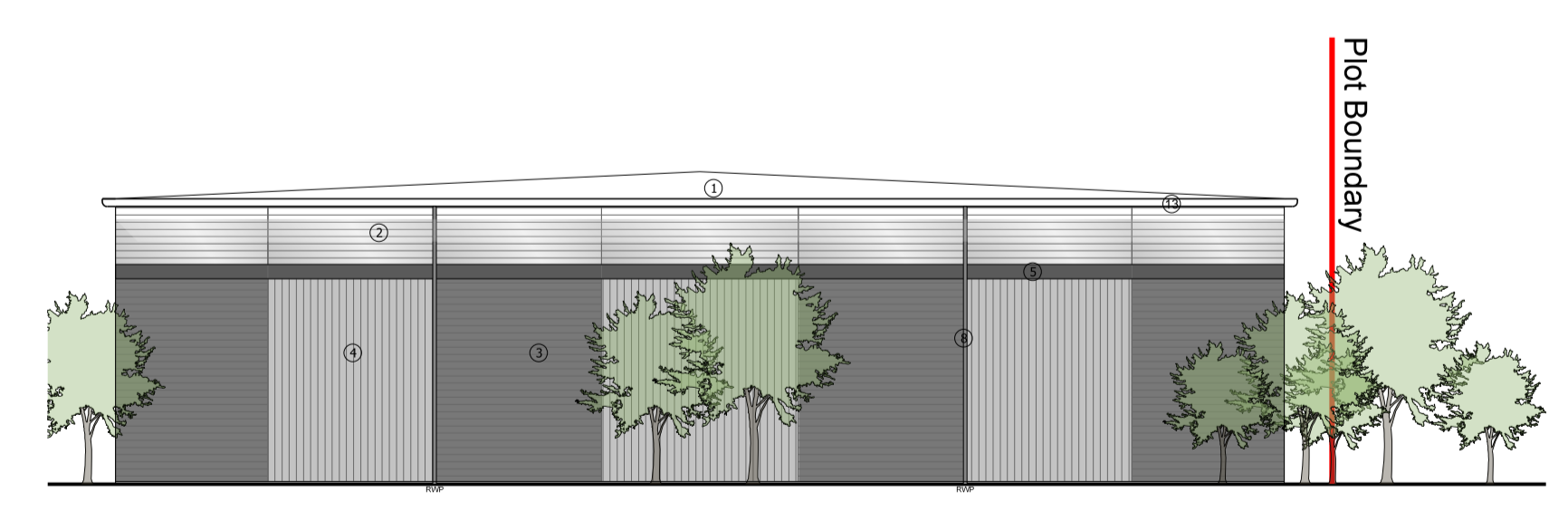
01 West Elevation
2015



02 East Elevation
2015



03 South Elevation
2015



04 North Elevation
2015

B	Windows, canopy and eaves colour updated. Opening windows added on units E and F	CG	01.02.18
A	F and G west elevation revised	RC	30.10.17
Rev	Description	Chkd	Date

Peer House
8-14 Ventulam Street
London WC1X 8LZ
tel +44(0)20 7400 2120
enquiries@cornisharchitects.com
www.cornisharchitects.com

Project
**LINK 9 - SKIMMINGDISH LANE
BICESTER
PLOT 2**

Dwg Title
**Elevations - Unit D, E, F & G
Zone 02**

Status
PLANNING

Scale
1:200 @ A0
Date
09/08/2017

Dwg No
17007/ TP / 2015
Rev
B