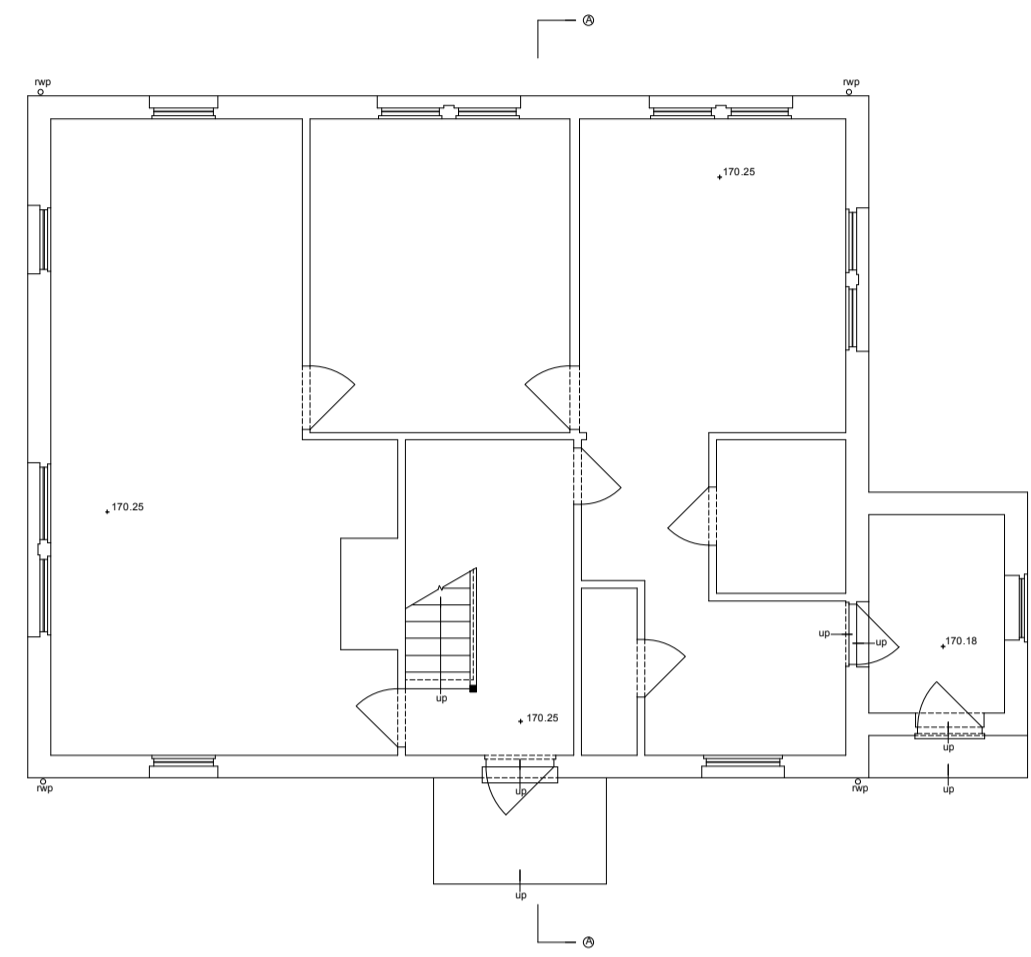


**General Notes:**

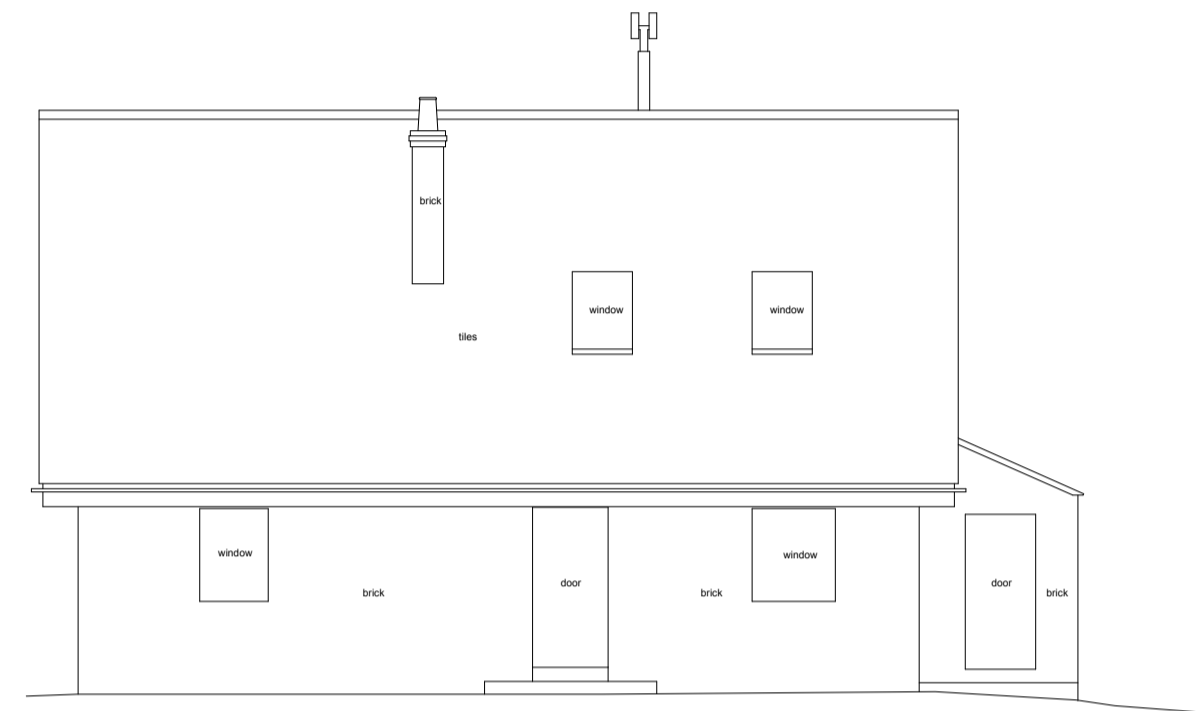
1. This drawing is to be read in conjunction with other consultants drawings
2. Check site conditions prior to commencement of work
3. Discrepancies must be reported directly to the Architect
4. Do not scale off drawing, use figured dimensions only
5. This drawing may be issued in colour, and may be a non-standard paper size

**BUILDING SURVEY KEY - (WHERE APPLICABLE)**

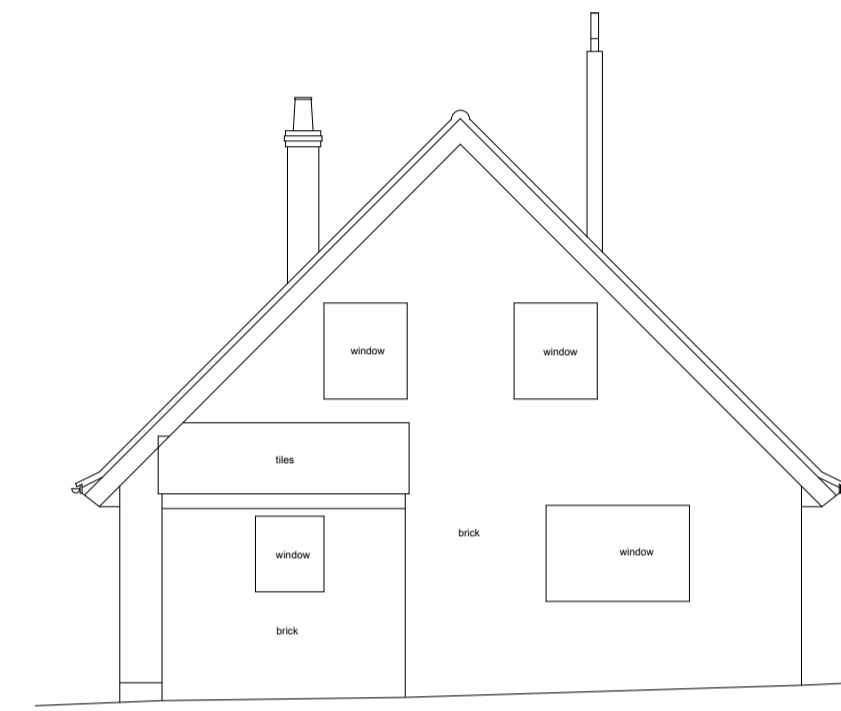
- |   |  |
|---|--|
| <ul style="list-style-type: none"> <li>TM - temporary bench mark</li> <li>ff - finished floor level</li> <li>fl - finished level</li> <li>fh - floor to head height</li> <li>ah - all to head height</li> <li>fs - floor to sill height</li> <li>uh - underside height</li> <li>ah - arch head height</li> <li>sp - arch springing point height</li> <li>(R) - room height</li> <li>rd - radiator</li> <li>tr - heater</li> <li>trst - heated towel rail</li> <li>hw - hot water tank</li> <li>wc - toilet</li> <li>wb - wash basin</li> <li>sh - shower</li> <li>bd - bidet</li> <li>ur - urinal</li> <li>hd - hand dryer</li> <li>wg - waste pipe</li> <li>vp - vent pipe</li> <li>rw - rain water pipe</li> <li>wf - water fountain</li> <li>g - gully</li> <li>rf - roof light</li> <li>sc - suspended ceiling</li> </ul> | <ul style="list-style-type: none"> <li>elec - electricity</li> <li>emtr - electricity meter</li> <li>gmtr - gas meter</li> <li>fr - fire hose reel</li> <li>bl - telecommunications point</li> <li>as - single electricity socket</li> <li>ds - double electricity socket</li> <li>ls - light switch</li> <li>cp - cooker point</li> <li>cb - gas box</li> <li>fl - light fitting</li> <li>fr - fluorescent light fitting</li> <li>bar - intruder alarm sensor</li> <li>fsr - fire alarm sensor</li> <li>ab - alarm box</li> <li>wm - water meter</li> <li>wf - water</li> <li>ic - inspection chamber</li> <li>mh - manhole cover</li> <li>cl - cover level</li> <li>il - invert level</li> <li>pc - pipe diameter</li> <li>fb - floorboard</li> <li>conc - concrete</li> <li>bk - brick</li> <li>gl - quarry tiles</li> <li>fp - fire plate</li> </ul> |
|---|--|



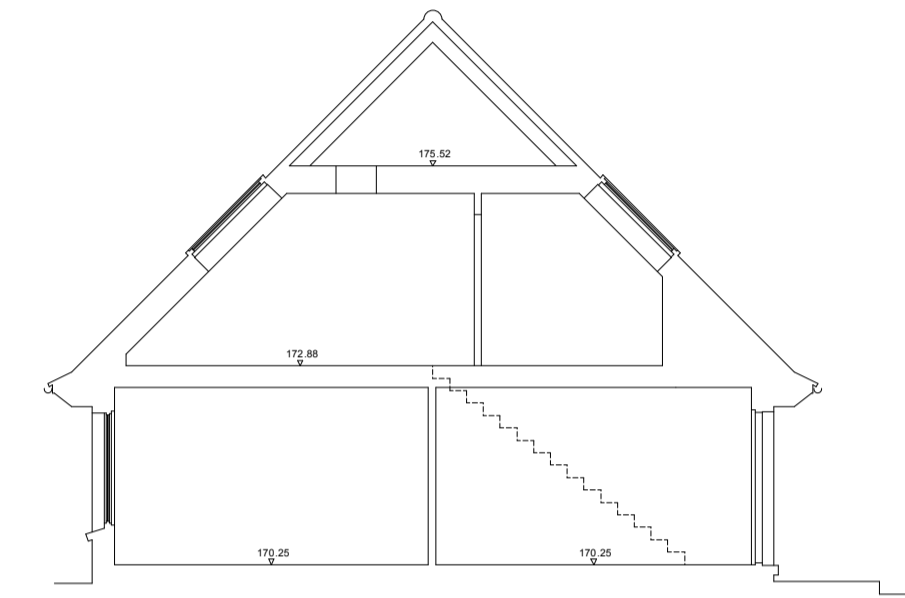
GROUND FLOOR PLAN



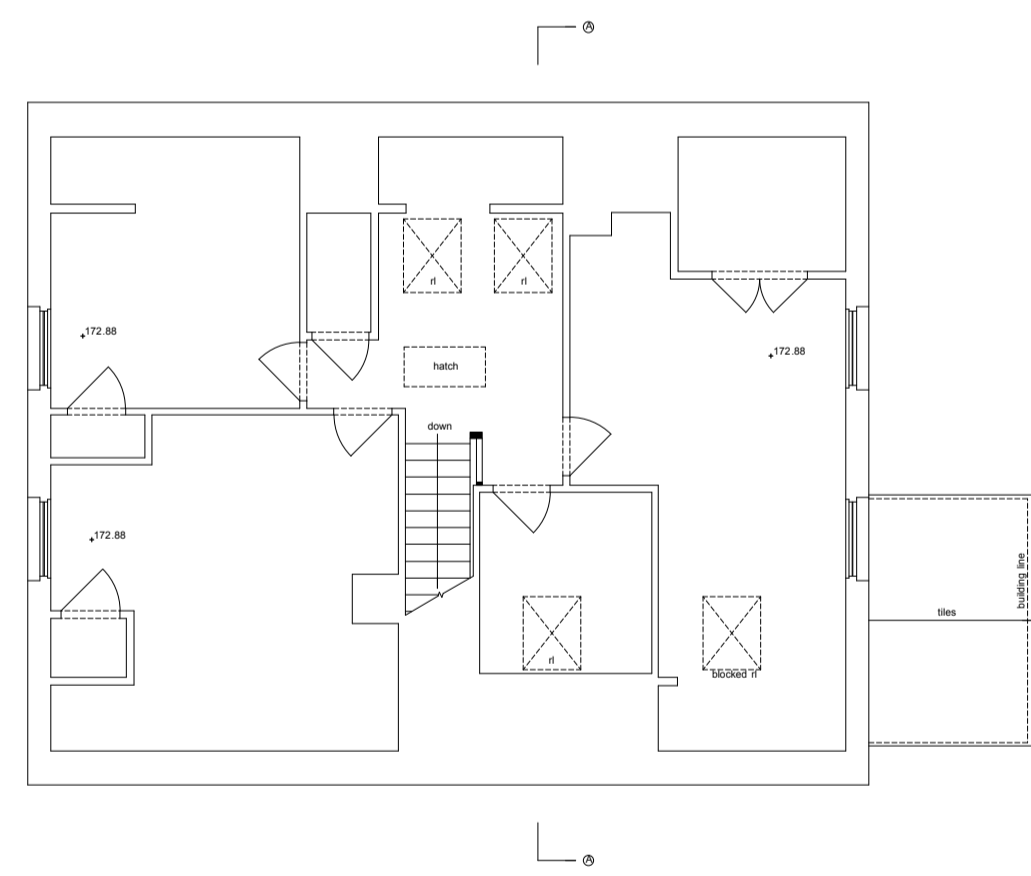
Datum 165.00m  
SOUTH EAST ELEVATION



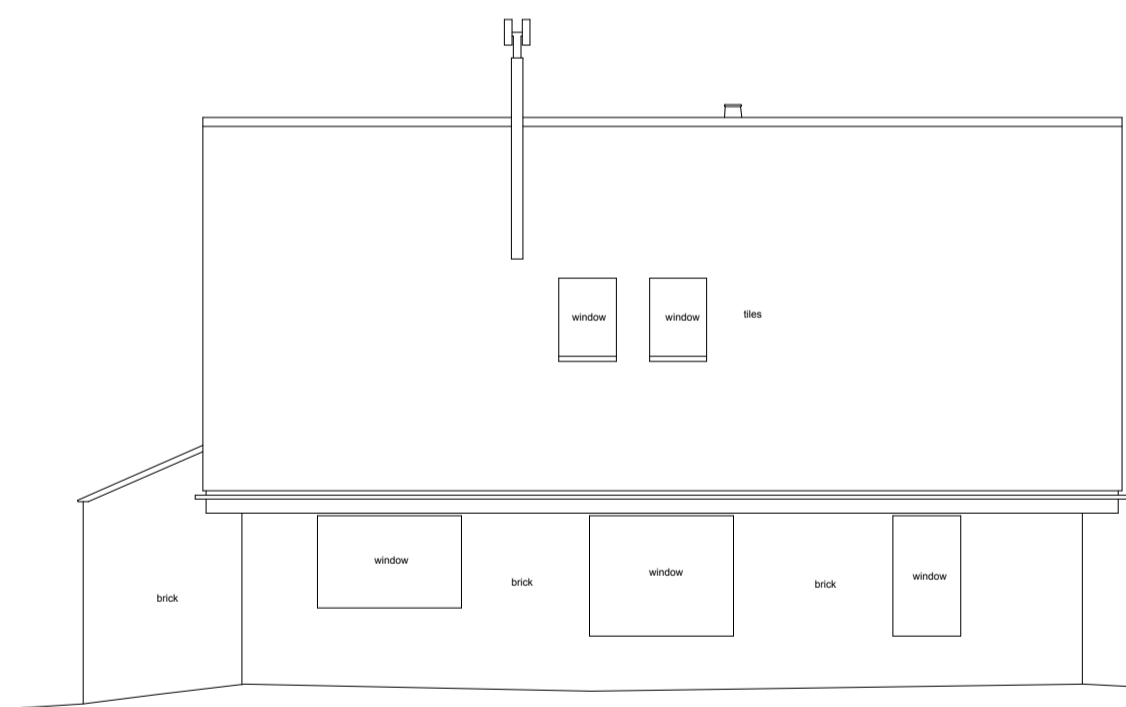
Datum 165.00m  
NORTH EAST ELEVATION



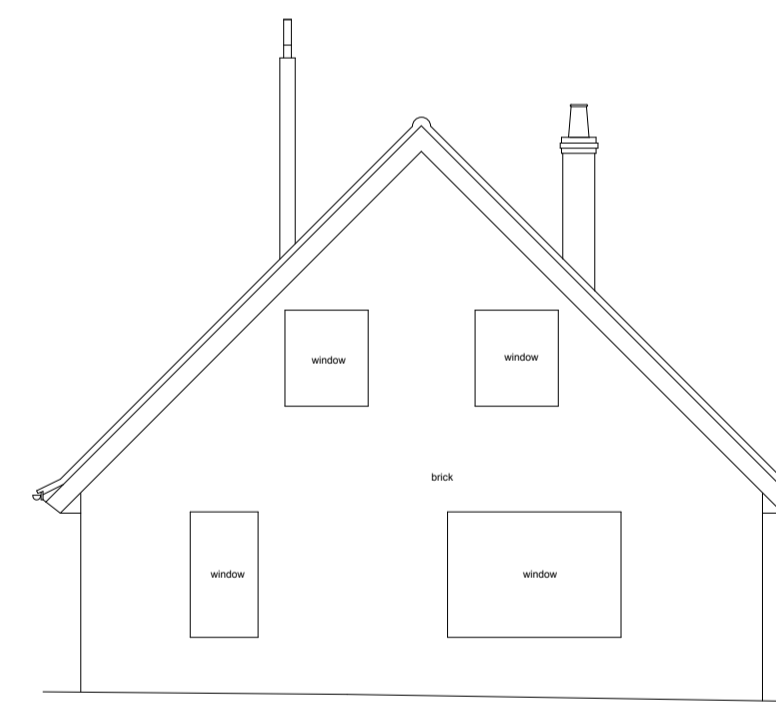
Datum 165.00m  
SECTION A-A



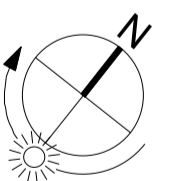
FIRST FLOOR PLAN



Datum 165.00m  
NORTH WEST ELEVATION



Datum 165.00m  
SOUTH WEST ELEVATION



A	12.12.14	Planning Issue	RF
Rev	Date	Notes	Drawn
Scale 1 : 100 @ A1			

QA Serial Number 19363

**YIANGOU**  
YIANGOU ARCHITECTS

Dyer House, 3 Dyer Street  
Cirencester, Glouce, GL7 2PP  
+ 01286 888 150  
e: oncall@yiangou.com  
w: www.yiangou.com

Client	Mr & Mrs. Besterman
Project Address	Muddle Barn Farm, Sibford Gower, Oxon, OX15 5RY
Project Description	Replacement Dwelling
Drawing Title	Existing Farmhouse Plans and Elevations
Drawing No.	1759.011
Rev.	A