

Outline

Application

NW Bicester Planning Application 1

Transport Assessment Appendices

List of Appendices

Appendix 1.1 – Transport Assessment Scoping Note

Appendix 3.1 – Accident Data

Appendix 3.2 – Base Year Junction Modelling Outputs

Appendix 8.1 - TRICS Outputs

Appendix 9.1 – WYG Technical Note on the NW Bicester Modelling

Appendix 9.2 – Bicester Saturn Model Outputs, Link Flows:

- Appendix 9.2a – Base Year 2012 AM Peak
- Appendix 9.2b – Base Year 2012 PM Peak
- Appendix 9.2c – Reference Case 2031 AM Peak
- Appendix 9.2d – Reference Case 2031 PM Peak
- Appendix 9.2e – NW Bicester full development 2031 AM Peak
- Appendix 9.2f – NW Bicester full development 2031 PM Peak

Appendix 9.3 – Bicester Saturn Model Outputs, Difference Plots:

- Appendix 9.3a - NW Bicester full development scenario minus the Reference Case AM Peak
- Appendix 9.3b - NW Bicester full development scenario minus the Reference Case PM Peak

Appendix 11.1 – Proposed Link Road and Access Junctions Modelling Outputs

Appendix 11.2 – Off-Site Junctions Modelling Outputs

Appendix 11.3 – Town Centre Vissim Model Flows and Results



NW Bicester Application 1: Land North of the Railway Line

Transport Assessment Scoping Note

Hyder Consulting (UK) Limited

2212959

HCL House
Fortran Road
St Mellons Business Park
St Mellons
Cardiff CF3 0EY
United Kingdom

Tel: +44 (0)29 2092 6700

Fax: +44 (0)29 2079 9275

www.hyderconsulting.com



NW Bicester Application 1: Land North of the Railway Line

Transport Assessment Scoping Note

Author Janice Hughes

Checker Janice Hughes

Approver Philip Harker

Report No 008-UA005241-UE31R-01

Date 10th June 2014

This report has been prepared for A2 Dominion in accordance with the terms and conditions of appointment for NW Bicester Land North of Railway Line dated March 2014. Hyder Consulting (UK) Limited (2212959) cannot accept any responsibility for any use of or reliance on the contents of this report by any third party.



CONTENTS

1	Introduction	1
2	Existing Situation	3
3	Transport and Development Commitments.....	6
4	Development Proposals	8
5	Trip Generation.....	9
6	Impact Assessment and Mitigation	10

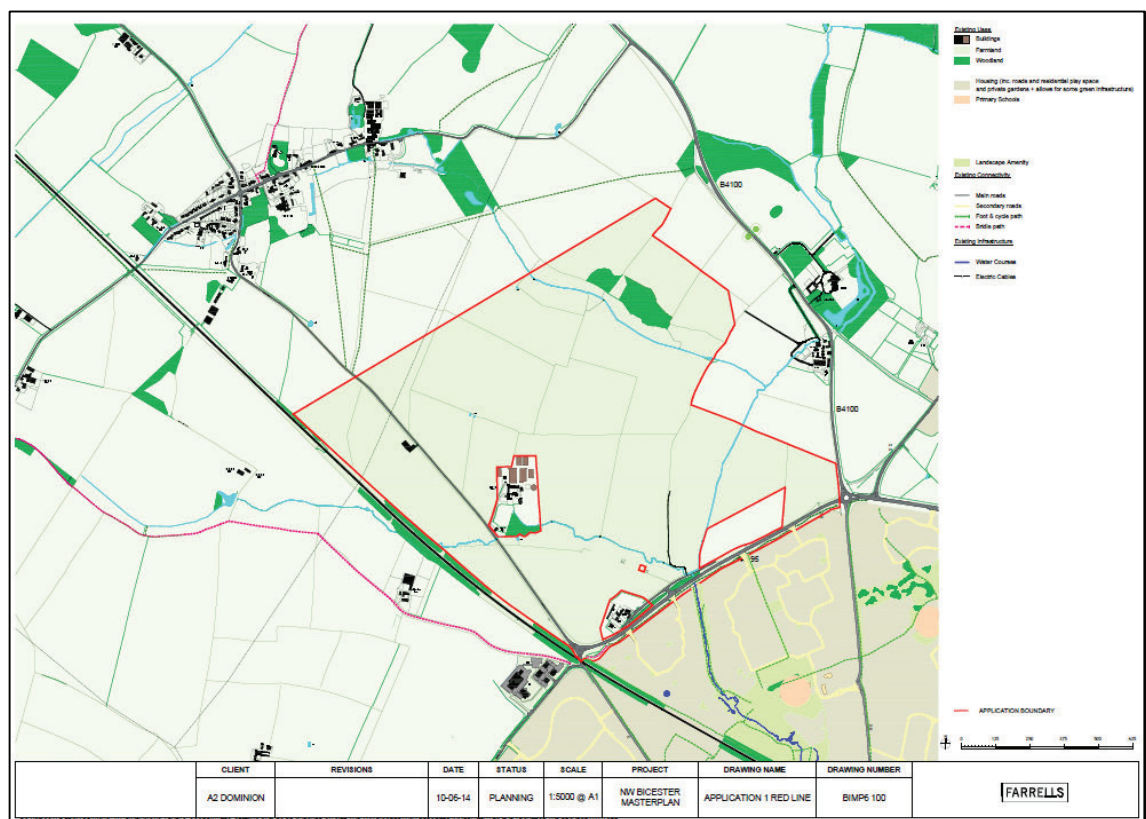
1 Introduction

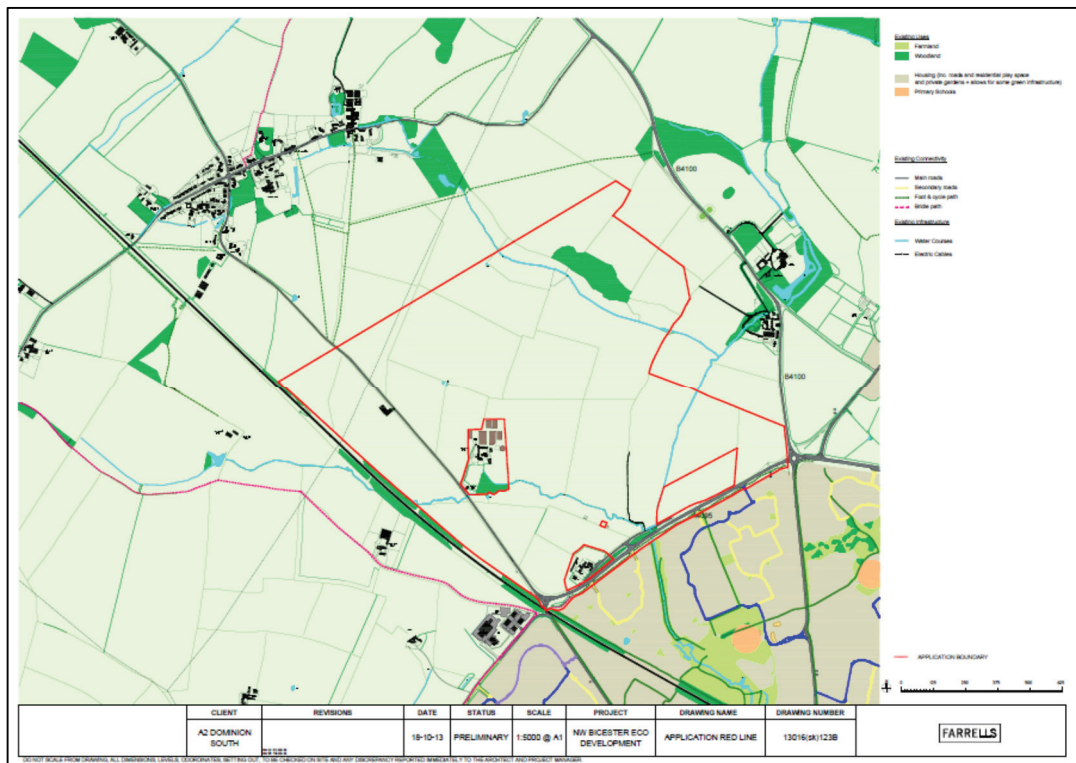
This note provides the scope for the production of a Transport Assessment for the Outline planning application for land north of the railway line, forming part of the NW Bicester development. The development comprises 2,600 homes, extra care housing, employment, shopping and community facilities, a primary school and an extension of the capacity of the Exemplar primary school.

The scoping note sets out the approach and methodology for undertaking a Transport Assessment in order to seek the agreement of the Local Highway Authority (LHA), Oxfordshire County Council (OCC) and the Highways Agency (HA).

The area included within the red line boundary for the development is shown in Figure 1 below.

Figure 1 – Land North of the Railway Line





This scoping note includes the outcome of various discussions to agree a number of aspects during the development of the Access and Travel Strategy for the NW Bicester Masterplan and further conversations on the relationship of the Masterplan work to the Transport Assessment for Application 1.

This Scoping Note broadly follows the proposed format of the Transport Assessment which will be produced in accordance with the Department for Transport (DfT) Guidance on Transport Assessment. It is noted that Oxfordshire County Council do not currently have specific guidance available.

A separate scoping submission has been made for the Transport Chapter of the Environmental Statement.

2 Existing Situation

Policy Context

A policy review will be undertaken including the national and local context of NPPF, PPS1 Annex on Eco Towns, Circular 02/13 on 'The Strategic Road Network and the delivery of sustainable development', Oxfordshire LTP3, Cherwell Proposed Submission Local Plan, Bicester Masterplan – Supplementary Planning Document and the Bicester Movement Study 2013.

Description of Networks

A description of the existing networks will be provided with a site location plan illustrating the relationship between the site and the pedestrian/ public rights of way, cycle, public transport and road network.

Highway Network

A detailed description of the local highway network will be provided. The report will identify any critical junctions on the existing road network that may be affected by traffic generated by the development.

Existing Travel Patterns

Existing travel patterns in the area will be provided using available data such as the 2011 Census, the National Travel Survey and the 2010 Bicester Household Travel Diary Survey. Accessibility to external facilities, such as retail, health and education, will be detailed, noting the current distances to such facilities.

Access for Pedestrians and Cyclists

A non-motorised user audit will be included which provides an assessment of the capacity, standard and safety of the local pedestrian and cycle network with descriptions of how they may be affected by the development. This will be extracted from the detailed audit of walking and cycling undertaken as part of the NW Bicester Masterplan.

Public Transport Accessibility

The accessibility of public transport will be described in terms of existing local public transport services, destinations and their frequency. An analysis of bus stop locations within close proximity will be provided. The distance of the site to the Bicester North and Bicester Town rail stations, access to rail stations by sustainable modes and the rail services available will also be set out.

Baseline Traffic

The Base Year 2012 traffic from the Bicester Saturn Model (BSM) will be used to provide the existing situation with regards to traffic volumes in the vicinity of the development.

The Bicester SATURN model was built using 2007 traffic data, and hence the model has a 2007 base year. In order to validate the use of the model with a 2012 Base Year, a series of vehicle counts were carried out by Oxfordshire County Council (OCC) in 2012/2013 and supplied to Halcrow who undertook a validation exercise. In total 35 automatic traffic counts were undertaken. The validation report is included as part of the evidence base for the Cherwell Local Plan.

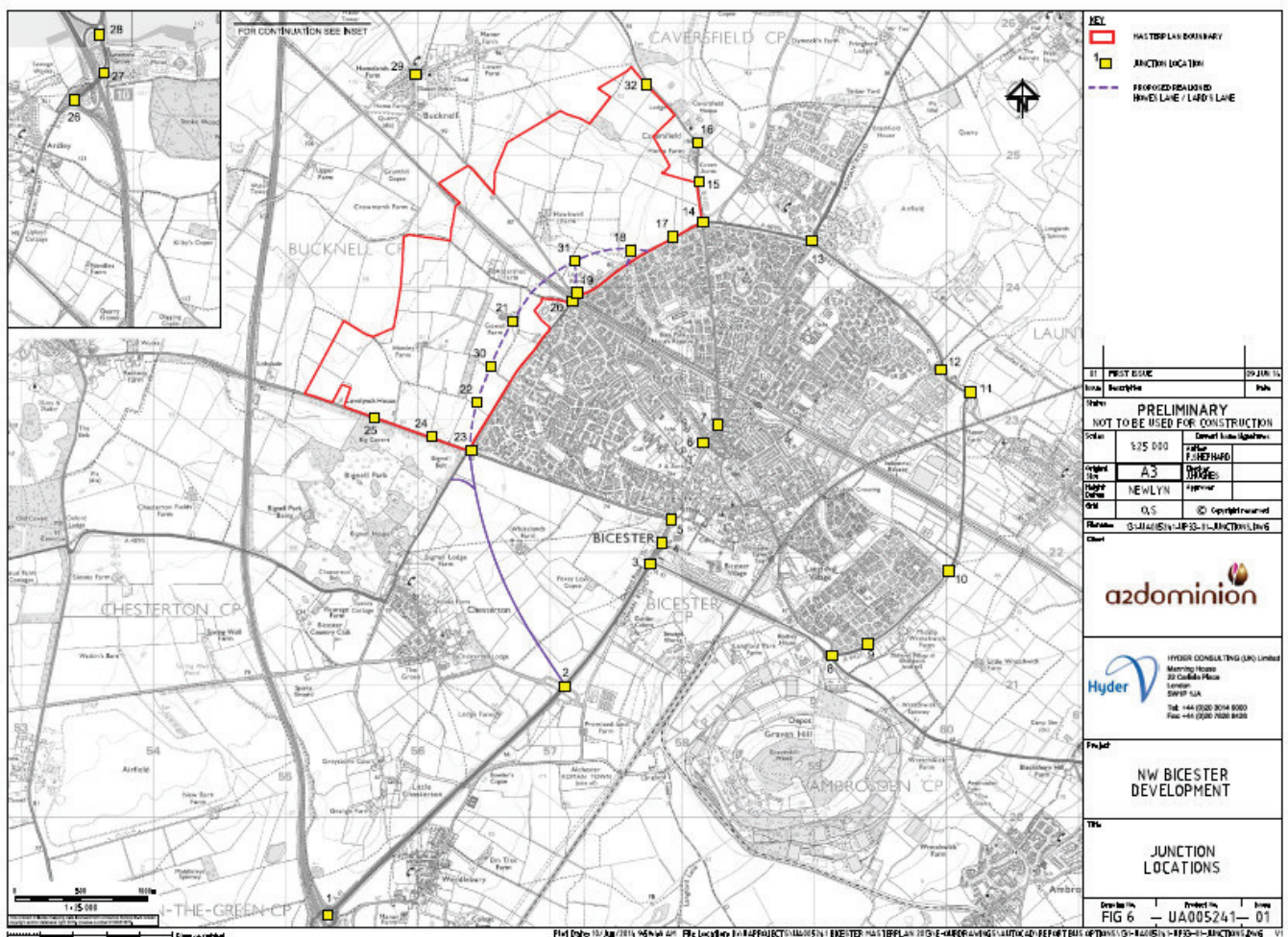
The 2012/2013 observed count data has been compared to modelled traffic flow data from the 2007 base year Bicester AM and PM peak scenarios. The validation checks show that the model nearly validates to the criteria set out in DMRB. The most significant issue is the overestimation of modelled flows on the B430. When considering the validation of the model within the town itself, the DMRB criteria are met.

It is recognised that for larger schemes which are expected to have a more strategic impact (i.e. effecting changes on the M40 or to the area surrounding Bicester) then the Central Oxfordshire Transport Model would generally be the most appropriate assessment tool. Hyder is aware that Oxfordshire County Council is undertaking work to update the strategic model but the model has not been available for the testing of the impact of NW Bicester for the Masterplan submission or planning applications for Land North or South of the Railway.

The Bicester Saturn Model has thus been recommended and agreed with OCC as the only appropriate tool for assessing the impacts of NW Bicester Land North of the Railway Line within the submission timescale.

The extent of the road network and junctions included in the Base Year analysis is shown in Figure 2 below (this includes various junctions which are proposed).

Figure 2 – Road Network and Junctions included in Assessment

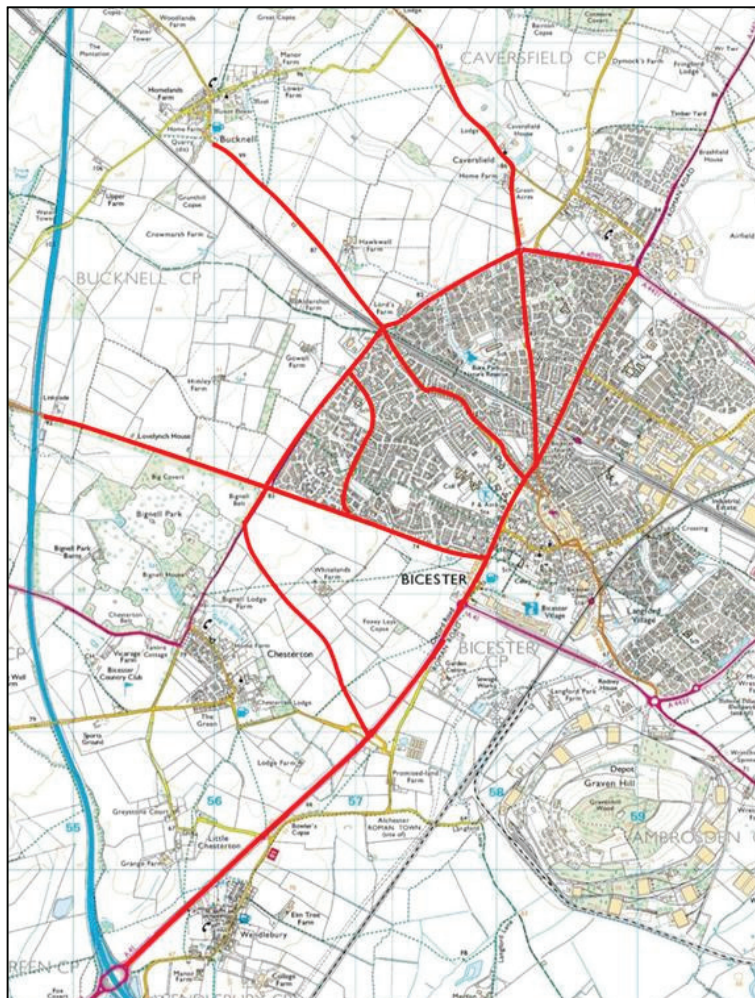


Accident Analysis

An analysis of personal injury accidents (PIA) that were recorded on the surrounding carriageway of the site and the main transport corridors in Bicester in the period between February 2009 and February 2014 will be undertaken.

This will seek to establish any clusters of accidents (deemed to have occurred within 25m of each other) and identify common causation factors within clusters. Accidents involving pedestrians, cyclists and buses will be analysed to ascertain any common causation factors or potential concerns. Critical junctions on the existing road network that may be affected by the traffic generated by the development will be analysed. The study area is shown in Figure 3, denoted by the red links.

Figure 3 – Accident Analysis Area



3 Transport and Development Commitments

Transport Proposals

The following transport proposals are planned and will be included in the modelling of the 2031 Reference Case (without development) as well as alongside proposals for NW Bicester:

- Town centre access improvements;
- Changes implemented as part of the town centre redevelopment;
- Traffic calming and 30mph speed limit on Middleton Stoney Road;
- Changes at the Pingle Drive junction, A41 / Oxford Road (ESSO) junction and along the A41 corridor as part of the mitigation measures from Tesco's move and Bicester Village phase 4;
- Park & ride entrance / exit at the junction of Vendee Drive and the A41;
- A4095 / B4100 junction alterations as part of NW Bicester Exemplar site;
- Alterations to the A41 / London Road (Rodney House) junction as part of Graven Hill mitigation;
- M40 Junction 9 phase 2 improvements;
- M40 Junction 10 pinch point scheme;
- London Road level crossing will be closed permanently to through traffic at points immediately north and south of the current rail level crossing; and
- Removal of the existing level crossing at Charbridge Lane.

Committed Development

Committed housing and employment has been considered within the Bicester Saturn Model as set out below, including the degree of uncertainty associated with the development:

Table 1 – Committed Development Uncertainty Log

Input	Uncertainty	Comments
393 house/2,900sqm employment development at NW Bicester exemplar	Near certain	Site approved and S106 signed. Expecting to implement by the end of 2013.
4,607 house/25.5Ha employment development at NW Bicester Masterplan	Near certain	Site accepted by central government for eco-development. Is in the emerging Local Plan as BICESTER 1. Masterplan to be submitted for SPD in Spring 2014.
Additional 1,000 houses on NW Bicester Masterplan	More than likely	This is additional housing numbers than Cherwell District Council have previously discussed but can be fitted within the red line boundary of the Masterplan site
1,900 house/104,000 sqm employment development at Graven Hill	Near certain	BICESTER 2 in the proposed Local Plan. Approved subject to S106
1,631 house development at SW Bicester	Near certain	Under construction.
720 house development at SW Bicester	More than likely	Site identified in emerging Local Plan as BICESTER 3. Application going to Planning Committee imminently
Additional 100 houses at SW Bicester	More than likely	Currently being considered
46,200 sqm employment development at Bicester Business Park, including relocation of Tesco store	More than likely	Outline permission granted in 2010. Identified in the proposed Local Plan as BICESTER 4.
Town centre redevelopment phase 1	Certain	Has just opened, including superstore, cinema and smaller retail units
Town centre redevelopment phase 2	Reasonably foreseeable	Proposed in the emerging Local Plan as BICESTER 6. CDC considering now that phase 1 is open.
RAF Bicester	Near certain	In the Local Plan as BICESTER 8. Plans being drawn up.
19,800 sqm employment at Bicester Gateway	More than likely	Identified in the proposed Local Plan submission as BICESTER 10.
26,400 sqm employment development at NE Bicester Business Park	More than likely	Identified in the proposed Local Plan submission document as BICESTER 11.

800 houses / 64,812 sqm employment development at SE Bicester	More than likely	Identified in the emerging Local Plan as BICESTER 12.
Bicester Village phase 4	Near certain	Approval subject to S106
Caversfield, Fringford Lane	Near Certain	200 dwellings
RAF Bicester (new houses in Caversfield)	Certain	Under construction

Source: White Young Green February 2014

4 Development Proposals

The assessed quantum of development for the Application 1 for land north of the railway is included in Table 2 below. The total for residential units includes 250 extra care dwellings.

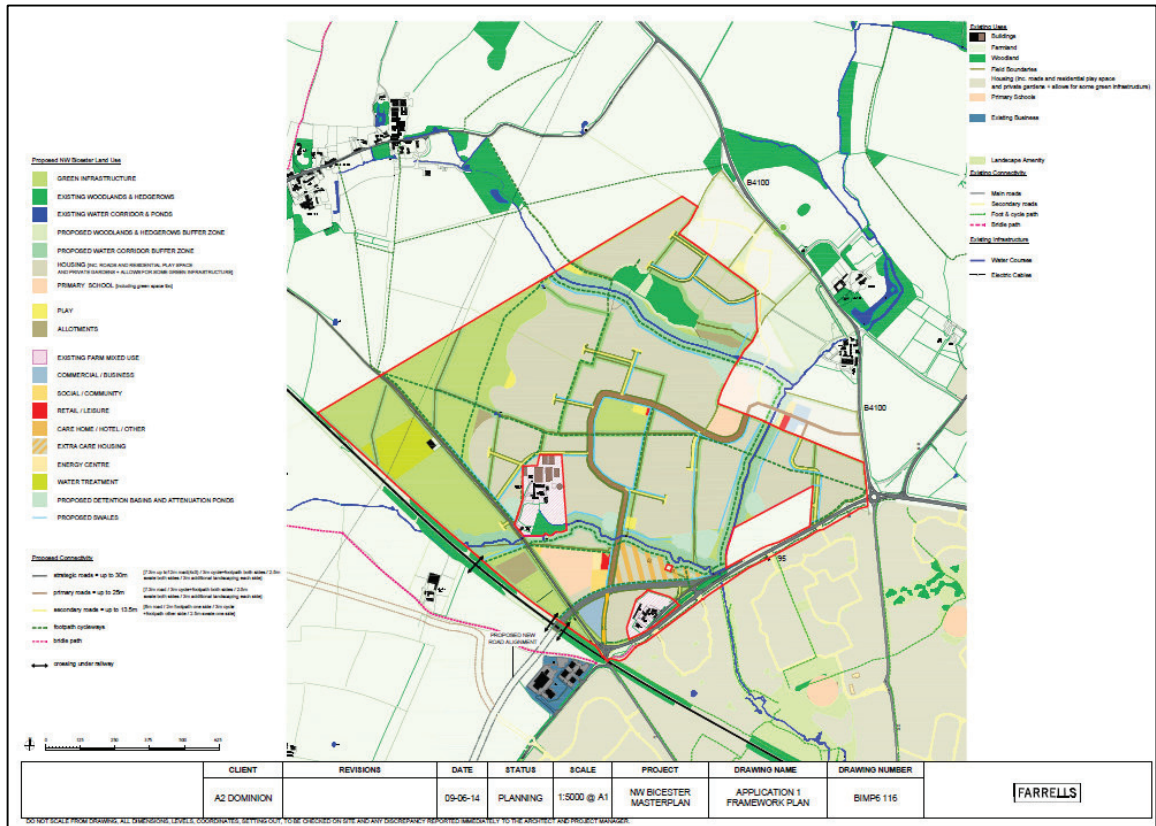
Table 2 – Land North of Railway Line Development Quantum

	Units	Quantum
Residential – Privately Owned * 70%	Dwellings	1820
Residential – Affordable Housing * 30%	Dwellings	780
		2600
Children's Nursery	Children	63
Primary School	Pupils	630
B1 Office Business Park / Eco Business Centre	m2	3850
B2/B8 Industrial Units/Storage and Distribution	m2	974
Local Shops/restaurants/A2 business	m2	1771
Community Hall/Multi Faith Centre	m2	2220
Energy Centre	m2	440

Source: Farrell's BIMP6 116 10/06/2014

Figure 4 shows the masterplan for the land uses included within the Application 1 development.

Figure 4 – Land North of Railway Line Masterplan



Travel by Non-motorised Modes

Proposals for good quality walking and cycling routes will be outlined in relation to the proposed development. A strategy for travel by non-motorised modes will be developed for the land north of the railway line from the overarching walking and cycling strategy for NW Bicester.

Travel by Public Transport

Information will be provided regarding future public transport provision relating to the development. Provisional details on how buses may circulate within the site will be provided – which will focus on a bus route running through the site for local bus services. The strategy for buses will be developed for the land north of the railway Line from the overarching bus strategy for NW Bicester.

Parking Provision

Overall standards for cycle and car parking provision for the site will be set out for the development. This will be consistent with the overall approach for NW Bicester.

Access Routes and Junctions

Details will be provided of new access routes and proposed new junctions onto the highway network which will be provided as part of the Application 1 proposal. It is proposed that a realigned Howes Lane/ Lord's lane is provided with a new underpass of the railway. This is the subject of a separate planning application but is intrinsically linked to the delivery of the development. The access strategy will be set out in the Transport Assessment.

5 Trip Generation

Trip Rates

Appendix 5 to the NW Bicester Masterplan Access and Travel Strategy sets out the total person trip rates to be used for the overall NW Bicester development. These same trip rates will apply to the land uses contained in the Application 1 to determine total person trip generations.

Modal Share and Containment

Appendix 4 to the NW Bicester Masterplan Access and Travel Strategy sets out proposed targets for mode share and containment for the overall development. This is based on an improvement in the level of containment compared to existing and the PPS1 target modal share.

In discussions with the County Council, it has been agreed that the same methodology for trip and traffic generation used for the Masterplan should apply to the individual developments in recognition that they each form an intrinsic part of the whole.

The Transport Assessment will set out the anticipated mode share and containment from the Application 1 mix of land uses once the Masterplan assumptions are applied. The Application 1 site will have the same access to public transport, walking and cycling and travel planning measures as the overall NW Bicester development and therefore the modal share targets for different distances travelled for each of the land uses will remain unchanged. Whilst the same approach will be used, the mode share expected to be achieved in the different parts of the Masterplan will vary depending on the mix of land uses (more/ less education, more/ less employment etc.)

Trip and Traffic Generation

The trip and traffic generation will be provided using the same method of calculation as the Masterplan. The development mix for Application 1 gives rise to 39.5% of the Masterplan traffic generation over the 12 hours, 38.1% in the AM peak hour and 41.5% in the PM peak hour.

6 Impact Assessment and Mitigation

Assessment Scenarios

The assessment of the impact of Application 1 will use the results of the modelling undertaken for the Masterplan (contained in the Appendix 7 to the Masterplan Access and Travel Strategy). The modelling has used 2031 as the opening year for the full development of NW Bicester, whilst it is recognised that build-out of the development will take longer. The use of 2031 for the Opening Year is the approach taken as this fits with the end date of the Local Plan and is the furthest model year available.

The use of 2031 as the future year is consistent with paragraph 25 of Circular 02/13 which identifies that the assessment review period should be 10 years after registration or the end of the Local Plan period, whichever is the greater. It is noted in paragraph 36 that “where a development is to be brought forward in phases, any mitigation needs will be assessed based on the opening of the final phase”. In this instance, 2031 is assumed to be the Opening Year of the final phase.

Traffic impact has been assessed for the full development of NW Bicester and as such, the approach to the impact of Application 1 will comprise the following:

- An analysis of the impact of the Application 1 development on junction turning movements and link flows across the study area network, by means of factoring flows from the proportion of traffic generation from the LNRL relative to the Masterplan
 - Junctions serving the Masterplan and on the new link have been modelled and designed to accommodate the full development. The TA will provide a commentary on the phasing and delivery of each junction relative to the Application 1 development. The full modelling results for the full Masterplan will be included.
 - With respect to off-site junction mitigation, proposals for improvements will be indicated for the following junctions:
 - Bucknell Road/ Field Street/ St John’s Street area of the town centre
 - B4100 Banbury Road/ A4095 Lord’s Lane
 - A4421 Buckingham Road/ A4095
- This will include an assessment of the need for and timing of improvements relative to the development traffic and other traffic growth.
- Off-site mitigation will also be set out for the Shakespeare Drive/ Blenheim Drive area and walking and cycling connections to the town centre.

Preliminary layouts for off-site improvements will be developed for the full Masterplan and the Transport Assessment will indicate the proportionate impact of the Application 1 development.

The impact assessment is based on the scenario of 85thile trip rates for residential in NW Bicester and does not include the implementation of a SE Link Road in Bicester. The TA will give an overview of the implications of Average trip rates and the SE Link Road on the traffic impact of the Application 1 development.

The TA will also set out proposals for off-site improvements for walking and cycling and bus connections.

The TA will be accompanied by a separate Framework Travel Plan which will identify the range of measures proposed for Application 1 to achieve sustainable travel targets. This will provide a Framework for sustainable travel, consistent with the overall Masterplan Access and Travel Strategy and the agreed measures for the Exemplar development.

Accidents between dates 01/01/2009 and 31/01/2014 (61) months

Selection: Notes:

Selected using Manual Selection

Table 1 - Accidents by Month

	2009	2010	2011	2012	2013	2014	Total
January	2	-	3	2	4	3	14
February	1	1	2	1	3	-	8
March	1	-	4	3	2	-	10
April	2	1	4	1	2	-	10
May	-	-	2	1	-	-	3
June	-	1	4	3	1	-	9
July	-	1	3	2	2	-	8
August	1	1	2	4	3	-	11
September	4	1	1	2	2	-	10
October	2	2	3	1	2	-	10
November	3	2	5	3	1	-	14
December	1	1	3	1	1	-	7
TOTAL	17	11	36	24	23	3	114

Table 2 - Casualties by Month

	2009	2010	2011	2012	2013	2014	Total
January	2	-	3	2	10	4	21
February	1	2	2	3	4	-	12
March	1	-	5	3	2	-	11
April	3	1	6	1	2	-	13
May	-	-	5	2	-	-	7
June	-	2	5	8	1	-	16
July	-	2	5	2	2	-	11
August	1	1	2	6	4	-	14
September	5	2	1	2	2	-	12
October	2	4	3	2	2	-	13
November	3	2	6	3	1	-	15
December	2	1	6	1	1	-	11
TOTAL	20	17	49	35	31	4	156

Table 3 - All Accidents by Severity

	2009	2010	2011	2012	2013	2014	Total
Fatal	0	1	0	1	0	0	2
Serious	3	0	3	3	5	0	14
Slight	14	10	33	20	18	3	98
TOTAL	17	11	36	24	23	3	114

Table 4 - Casualties by Severity

	2009	2010	2011	2012	2013	2014	Total
Fatal	0	2	0	1	0	0	3
Serious	3	0	6	3	5	0	17
Slight	17	15	43	31	26	4	136
TOTAL	20	17	49	35	31	4	156

Accidents between dates 01/01/2009 and 31/01/2014 (61) months

Selection: Notes:

Selected using Manual Selection

Table 5 - Pedestrian Accidents by Severity

	2009	2010	2011	2012	2013	2014	Total
Fatal	0	0	0	1	0	0	1
Serious	2	0	1	1	0	0	4
Slight	1	0	5	0	3	0	9
TOTAL	3	0	6	2	3	0	14

Table 6 - Cycle Accidents by Severity

	2009	2010	2011	2012	2013	2014	Total
Fatal	0	0	0	0	0	0	0
Serious	0	0	0	0	1	0	1
Slight	0	1	3	2	2	0	8
TOTAL	0	1	3	2	3	0	9

Table 7 - Motor Vehicle Only Accidents by Severity

	2009	2010	2011	2012	2013	2014	Total
Fatal	0	1	0	0	0	0	1
Serious	1	0	2	2	4	0	9
Slight	13	9	25	18	13	3	81
TOTAL	14	10	27	20	17	3	91

Table 8 - OAP Accidents by Severity

	2009	2010	2011	2012	2013	2014	Total
Fatal	0	0	0	0	0	0	0
Serious	0	0	1	0	1	0	2
Slight	2	1	4	2	2	0	11
TOTAL	2	1	5	2	3	0	13

Table 9 - Child Accidents by Severity

	2009	2010	2011	2012	2013	2014	Total
Fatal	0	1	0	0	0	0	1
Serious	0	0	0	0	0	0	0
Slight	0	1	3	1	1	0	6
TOTAL	0	2	3	1	1	0	7

Table 10 - P2W Accidents by Severity

	2009	2010	2011	2012	2013	2014	Total
Fatal	0	0	0	0	0	0	0
Serious	1	0	0	0	2	0	3
Slight	2	0	2	4	3	0	11
TOTAL	3	0	2	4	5	0	14

AccsMap - Accident Analysis System

Accidents between dates 01/01/2009 and 31/01/2014 (61) months

Selection:

Notes:

Selected using Manual Selection

Wednesday 07/01/2009 Time 1045 Slight at A41 SBOUND RBT J/W A41 BICESTER BYPASS & B4030 OXFORD RD BICESTER

E: 457749 N: 221885 Junction Detail: 1 Control 4

Fine without high winds Road surface Dry

Vehicle Reference 1 Car Moving from NE to S Daylight:street lights present

On main carriageway

Vehicle Reference 2 Bus or coach

Moving from NE to S Going ahead other

On main carriageway

Casualty Reference: 1

Age: 29

Male

Driver/rider

Severity: Slight Injured by vehicle: 2

Monday 26/01/2009 Time 1035 Slight at A41 SBOUND C/WAY AT ENTRANCE TO BLOOMS GARDEN CENTRE CHESTERTON

E: 457521 N: 221497 Junction Detail: 3 Control 4

Fine without high winds Road surface Wet/Damp

Vehicle Reference 1 Other motor vehicle Moving from NE to S Daylight: no street lighting

On main carriageway

Vehicle Reference 2 Car

Moving from NE to S Going ahead other

On main carriageway

Casualty Reference: 1

Age: 52

Male

Passenger

Severity: Slight Injured by vehicle: 2

AccsMap - Accident Analysis System

Accidents between dates 01/01/2009 and 31/01/2014 (61) months

Selection:

Notes:

Selected using Manual Selection

Monday 16/02/2009 Time 1820 Slight at A4095 SOUTHWOLD LANE BY TOUCAN XING JUST E OF J/W FRINGFORD RD CAVERSFIELD

E: 458291 N: 224481 Junction Detail: 3 Control 4

Fine without high winds Road surface Dry

Vehicle Reference 1 Car Moving from N to E

Darkness: street lights present and lit

Turning left

On main carriageway

Vehicle Reference 2 Motor Cycle over 50

Going ahead other

On main carriageway

Casualty Reference: 1

Age: 41

Female

Driver/rider

Severity: Slight Injured by vehicle: 2

Tuesday 24/03/2009 Time 1830 Serious at KINGS END APPROX 60 M S OF J/W QUEENS AVENUE BICESTER

E: 458010 N: 222420 Junction Detail: 0 Control

Fine without high winds Road surface Dry

Moving from S to NE

Daylight:street lights present

Going ahead other

On main carriageway

Vehicle Reference 1 Car

Going ahead other

On main carriageway

Moving from S to NE

On main carriageway

Overtaking moving vehicle O/S

On main carriageway

Casualty Reference: 1

Age: 26

Male

Driver/rider

Severity: Serious Injured by vehicle: 2

Accidents between dates 01/01/2009 and 31/01/2014 (61) months

Selection: Notes:

Selected using Manual Selection

Saturday	11/04/2009	Time	1135	Slight	at	HOWES LANE J/W SHAKESPEARE DRIVE	BICESTER	
E: 456934	N: 223598	Junction Detail:	3	Control	2			
Other		Road surface		Wet/Damp		Daylight:street lights present		
Vehicle Reference 1	Car	Moving from	NE to S	Going ahead other			On main carriageway	
Vehicle Reference 2	Car	Moving from	SE to NE	Turning right			On main carriageway	
Casualty Reference:	1	Age:	38	Male	Passenger		Severity: Slight	Injured by vehicle: 2
Casualty Reference:	2	Age:	34	Female	Driver/rider		Severity: Slight	Injured by vehicle: 2
Tuesday	14/04/2009	Time	1040	Slight	at	SHAKESPEARE DRIVE J/W BLENHEIM DRIVE	BICESTER	
E: 457086	N: 223139	Junction Detail:	3	Control	4			
Fine without high winds		Road surface		Dry		Daylight:street lights present		
Vehicle Reference 1	Car	Moving from	SE to S	Turning left			On main carriageway	
Vehicle Reference 2	Car	Moving from	NE to S	Going ahead other			On main carriageway	
Casualty Reference:	1	Age:	72	Female	Driver/rider		Severity: Slight	Injured by vehicle: 2

Accidents between dates 01/01/2009 and 31/01/2014 (61) months

Selection:

Selected using Manual Selection

Notes:

Tuesday 04/08/2009 Time 1854 Slight at BUCKNELL RD O/S NO 82 APPROX 30M NW OF J/W THE OVAL BICESTER

E: 457766 N: 223391 Junction Detail: 0 Control

Raining without high winds

Road surface

Wet/Damp

Daylight:street lights present

Vehicle Reference 1 Car

Moving from N to SE

Going ahead other

On main carriageway

Vehicle Reference 2 Car

Moving from SE to

Parked

On main carriageway

Vehicle Reference 3 Car

Moving from N to SE

Starting

On main carriageway

Casualty Reference: 1 Age: 48 Male Driver/rider Severity: Slight Injured by vehicle: 3

Friday 18/09/2009 Time 1215 Serious at QUEENS AVE NEAR PELICAN CROSSING JUST N OF POLICE STATION BICESTER

E: 458132 N: 222716 Junction Detail: 0 Control

Fine without high winds

Road surface

Dry

Daylight:street lights present

Vehicle Reference 1 Car

Moving from S to N

Going ahead other

On main carriageway

Casualty Reference: 1 Age: 23 Female Pedestrian Severity: Serious Injured by vehicle: 1

AccsMap - Accident Analysis System

Accidents between dates 01/01/2009 and 31/01/2014 (61) months

Selection:

Notes:

Selected using Manual Selection

Monday 21/09/2009 Time 1930 Serious at BUCKINGHAM ROAD BY VICTORIA HOSUE SURGERY APPROX 40M S OF MINI RBT J/W CHURCHILL ROAD
BICESTER

E: 458574 N: 223575 Junction Detail: 9 Control 4

Fine without high winds Road surface Dry

Darkness: street lights present and lit

Vehicle Reference 1 Car Moving from N to S

Going ahead other

On main carriageway

Casualty Reference: 1

Age: 18

Male

Pedestrian

Severity: Serious Injured by vehicle: 1

Friday 25/09/2009 Time 0704 Slight at A4095 SOUTHWOLD LANE AT RBT J/W A4421 BUCKINGHAM ROAD BICESTER

E: 458951 N: 224354 Junction Detail: 1 Control 4

Fine without high winds Road surface Dry

Daylight:street lights present

Vehicle Reference 1 Car Moving from W to E

Going ahead other

On main carriageway

Casualty Reference: 1

Age: 63

Female

Driver/rider

Severity: Slight Injured by vehicle: 1

Vehicle Reference 2 Van or Goods 3.5 to

Stopping

On main carriageway

Accidents between dates 01/01/2009 and 31/01/2014 (61) months

Selection:

Notes:

Selected using Manual Selection

Monday	28/09/2009	Time	1900	Slight	at	HOWES LANE J/W SHAKESPEARE DRIVE	BICESTER
E: 456937	N: 223597	Junction Detail:	3	Control	2		
Fine without high winds							
	Vehicle Reference 1	Car		Road surface	Dry	Darkness: street lights present and lit	
				Moving from	S to SE	Turning right	On main carriageway
	Casualty Reference:	1	Age:	48	Male	Driver/rider	Severity: Slight Injured by vehicle: 1
	Vehicle Reference 2	Car		Moving from	NE to S	Going ahead other	On main carriageway
	Casualty Reference:	2	Age:	23	Male	Driver/rider	Severity: Slight Injured by vehicle: 2
Tuesday	13/10/2009	Time	1513	Slight	at	BUCKNELL ROAD OUTSIDE HOUSE NO 16 NEAR BROOKSIDE PRIMARY	BICESTER
E: 458100	N: 222953	Junction Detail:	0	Control			
Fine without high winds							
	Vehicle Reference 1	Car		Road surface	Dry	Daylight:street lights present	
				Moving from	SE to SE	U-turn	On main carriageway
	Vehicle Reference 2	Motorcycle over 500		Moving from	N to SE	Going ahead other	On main carriageway
	Casualty Reference:	1	Age:	24	Male	Driver/rider	Severity: Slight Injured by vehicle: 2

Accidents between dates 01/01/2009 and 31/01/2014 (61) months

Selection:

Selected using Manual Selection

Notes:

Tuesday 20/10/2009 Time 0858 Slight at QUEENS AVE J/W POLICE STATION BICESTER

E: 458116 N: 222686 Junction Detail: 8 Control 4
 Fine without high winds Road surface Dry

Vehicle Reference 1 Car Moving from NE to W Daylight:street lights present
 Turning right 9

Casualty Reference: 1 Age: 28 Female Pedestrian Severity: Slight Injured by vehicle: 1

Tuesday 03/11/2009 Time 1536 Slight at A41 NBOUND AT J/W SLIP ROAD FROM CHESTERTON CHESTERTON

E: 457124 N: 221023 Junction Detail: 5 Control 4
 Fine without high winds Road surface Dry

Vehicle Reference 1 Car Moving from S to N Daylight: no street lighting
 Going ahead other On main carriageway

Vehicle Reference 2 Car Moving from S to N Waiting to turn left
 On main carriageway

Casualty Reference: 1 Age: 43 Female Driver/rider Severity: Slight Injured by vehicle: 2

Accidents between dates 01/01/2009 and 31/01/2014 (61) months

Selection:

Selected using Manual Selection

Notes:

Saturday 21/11/2009 Time 1750 Slight at A41 NBOUND C/WAY J/W ONSLIP FROM CHESTERTON CHESTERTON

E: 457129 N: 221024 Junction Detail: 5 Control 4

Raining without high winds Road surface Wet/Damp Darkness: no street lighting

Vehicle Reference 1 Car Moving from S to NE Going ahead other On main carriageway

Casualty Reference: 1 Car Age: 29 Female Driver/rider Severity: Slight Injured by vehicle: 1

Vehicle Reference 2 Car Moving from S to NE Going ahead but held up On main carriageway

Vehicle Reference 3 Car Moving from S to NE Going ahead but held up On main carriageway

Thursday 26/11/2009 Time 0745 Slight at B4100 AT BEND APPROX 40M N OF HOME FARM & TURN TO CAVERSFIELD CAVERSFIELD

E: 458084 N: 225117 Junction Detail: 0 Control

Fine without high winds Road surface Wet/Damp Daylight: no street lighting

Vehicle Reference 1 Car Moving from S to N Going ahead left bend On main carriageway

Casualty Reference: 1 Car Age: 39 Male Driver/rider Severity: Slight Injured by vehicle: 1

Accidents between dates 01/01/2009 and 31/01/2014 (61) months

Selection: Notes:

Selected using Manual Selection

Friday 11/12/2009 Time 1510 Slight at BUCKNELL ROAD APPROX 200M SE OF ENTRANCE TO HAWKWELL FARM CAVERSFIELD

E: 457041 N: 224132 Junction Detail: 0 Control

Fine without high winds Road surface

Vehicle Reference 1 Car Moving from N to SE

Age: 35 Male

Moving from SE to N

Age: 56 Female

Moving from SE to N

Age: 56 Female

Moving from SE to N

Age: 56 Female

Moving from SE to N

Age: 56 Female

Moving from SE to N

Age: 56 Female

Moving from SE to N

Age: 56 Female

Moving from SE to N

Age: 56 Female

Moving from SE to N

Age: 56 Female

Moving from SE to N

Age: 56 Female

Moving from SE to N

Age: 56 Female

Moving from SE to N

Age: 56 Female

Moving from SE to N

Age: 56 Female

Moving from SE to N

Age: 56 Female

Moving from SE to N

Daylight: no street lighting

Going ahead other

Driver/rider

Severity: Slight

Injured by vehicle: 1

On main carriageway

Severity: Slight

Injured by vehicle: 2

On main carriageway

Severity: Slight

Injured by vehicle: 2

On main carriageway

Severity: Slight

Injured by vehicle: 2

On main carriageway

Severity: Slight

Injured by vehicle: 2

On main carriageway

Severity: Slight

Injured by vehicle: 2

On main carriageway

Severity: Slight

Injured by vehicle: 2

On main carriageway

Severity: Slight

Injured by vehicle: 2

On main carriageway

Severity: Slight

Injured by vehicle: 2

On main carriageway

Wednesday 17/02/2010 Time 2015 Fatal at BUCKNELL ROAD O/S HAWKWELL FARM CAVERSFIELD

E: 456866 N: 224375 Junction Detail: 0 Control

Fine without high winds Road surface

Vehicle Reference 1 Car Moving from N to SE

Age: 36 Male

Moving from SE to N

Age: 4 Male

Moving from SE to N

Age: 4 Male

Moving from SE to N

Age: 4 Male

Moving from SE to N

Age: 4 Male

Moving from SE to N

Age: 4 Male

Moving from SE to N

Age: 4 Male

Moving from SE to N

Age: 4 Male

Moving from SE to N

Darkness: no street lighting

Going ahead other

Driver/rider

Severity: Fatal

Injured by vehicle: 1

On main carriageway

Severity: Fatal

Injured by vehicle: 1

On main carriageway

Severity: Fatal

Injured by vehicle: 1

On main carriageway

Severity: Fatal

Injured by vehicle: 1

On main carriageway

Severity: Fatal

Injured by vehicle: 1

On main carriageway

AccsMap - Accident Analysis System

Accidents between dates 01/01/2009 and 31/01/2014 (61) months

Selection:

Notes:

Selected using Manual Selection

Tuesday 20/04/2010 Time 1340 Slight at A41 BICESTER BYPASS RBT J/W B4030 OXFORD RD BICESTER

E: 457783 N: 221952 Junction Detail: 1 Control 4

Fine without high winds Road surface Dry

Daylight:street lights present

Vehicle Reference 1 Car Moving from NE to S Stopping

On main carriageway

Vehicle Reference 2 Car Moving from NE to S Going ahead but held up

On main carriageway

Casualty Reference: 1 Age: 39 Male Driver/rider Severity: Slight Injured by vehicle: 2

Vehicle Reference 3 Car Moving from NE to S Going ahead but held up

On main carriageway

Vehicle Reference 4 Car Moving from NE to S Going ahead but held up

On main carriageway

Wednesday 02/06/2010 Time 1000 Slight at A41 SBOUND APPROX 80M NE OF RBT AT JCT 9 M40 WENDLEBURY

E: 455424 N: 219348 Junction Detail: 0 Control

Fine without high winds Road surface Dry

Daylight:street lights present

Vehicle Reference 1 Car Moving from NE to S Stopping

On main carriageway

Vehicle Reference 2 Car Moving from NE to S Going ahead but held up

On main carriageway

Casualty Reference: 1 Age: 46 Female Driver/rider Severity: Slight Injured by vehicle: 2

Casualty Reference: 2 Age: 71 Female Passenger Severity: Slight Injured by vehicle: 2

Vehicle Reference 3 Bus or coach Moving from NE to S Going ahead but held up

On main carriageway

Accidents between dates 01/01/2009 and 31/01/2014 (61) months

Selection:

Notes:

Selected using Manual Selection

Thursday	08/07/2010	Time	1050	Slight	at	B4100 AT J/W HOME FARM & TURN TO CAVERSFIELD	CAVERSFIELD
E: 458103	N: 225089	Junction Detail:	3	Control	4		
Fine without high winds		Road surface	Dry	Moving from SE to N		Daylight: no street lighting	
Vehicle Reference 1	Car			Turning right		On main carriageway	
Casualty Reference:	1	Age:	30	Female	Driver/rider	Severity: Slight	Injured by vehicle: 1
Vehicle Reference 2	Car	Moving from	N to S	Going ahead right bend		On main carriageway	
Casualty Reference:	2	Age:	42	Female	Driver/rider	Severity: Slight	Injured by vehicle: 2
Tuesday	24/08/2010	Time	1740	Slight	at	COKER CLOSE J/W KINGS END	BICESTER
E: 458100	N: 222436	Junction Detail:	3	Control	4		
Fine without high winds		Road surface	Dry	Moving from S to SE		Daylight:street lights present	
Vehicle Reference 1	Car			Turning right		On main carriageway	
Casualty Reference:	1	Age:	31	Female	Driver/rider	Severity: Slight	Injured by vehicle: 1
Vehicle Reference 2	Car	Moving from	SE to N	Going ahead other		On main carriageway	

AccsMap - Accident Analysis System

Accidents between dates 01/01/2009 and 31/01/2014 (61) months

Selection:

Notes:

Selected using Manual Selection

Tuesday 21/09/2010 Time 1151 Slight at A41 NBOUND C/WAY ADJACENT TO ENTRANCE TO BLOOMS GARDEN CENTRE CHESTERTON

E: 457471 N: 221468 Junction Detail: 0 Control

Fine without high winds Road surface Dry

Vehicle Reference 1 Car Moving from S to NE Daylight: no street lighting

On main carriageway

Casualty Reference: 1 Car Age: 29 Female Driver/rider Severity: Slight Injured by vehicle: 1

Casualty Reference: 2 Van or Goods 3.5 to Goods 7.5 tonnes mg Age: 50 Female Passenger Severity: Slight Injured by vehicle: 1

Vehicle Reference 2 Van or Goods 3.5 to Goods 7.5 tonnes mg Moving from S to NE Going ahead other On main carriageway

Vehicle Reference 3 Goods 7.5 tonnes mg Moving from S to NE Changing lane to right On main carriageway

Monday 04/10/2010 Time 2100 Slight at B4030 MIDDLETON STONEY RD J/W A4095 CHESTERTON RD CHESTERTON

E: 456364 N: 222759 Junction Detail: 3 Control 4

Fine without high winds Road surface Dry

Vehicle Reference 1 Car Moving from S to N Darkness: no street lighting

On main carriageway

Casualty Reference: 1 Car Age: 22 Male Passenger Severity: Slight Injured by vehicle: 1

Accidents between dates 01/01/2009 and 31/01/2014 (61) months

Selection:

Notes:

Selected using Manual Selection

Friday	29/10/2010	Time	1915	Slight	at	A41 SBOUND APPROX 600M NE OF J9 M40	WENDLEBURY
E: 455798	N: 219711	Junction Detail:	0	Control			
Raining without high winds							
Vehicle Reference 1	Car	Wet/Damp	Moving from	NE to S	Darkness: street lights present and lit	Going ahead but held up	On main carriageway
Vehicle Reference 2	Car	Wet/Damp	Moving from	NE to S	Darkness: street lights present and lit	Going ahead but held up	On main carriageway
Casualty Reference: 1		Age:	12	Female		Passenger	Severity: Slight Injured by vehicle: 2
Casualty Reference: 2		Age:	49	Female		Driver/rider	Severity: Slight Injured by vehicle: 2
Casualty Reference: 3		Age:	15	Female		Passenger	Severity: Slight Injured by vehicle: 2
Tuesday	02/11/2010	Time	1723	Slight	at	A4095 SOUTHWOLD LANE J/W HORNBEAM RD	BICESTER
E: 458761	N: 224393	Junction Detail:	3	Control			
Raining without high winds							
Vehicle Reference 1	Car	Wet/Damp	Moving from	E to W	Darkness: street lights present and lit	Going ahead other	On main carriageway
Vehicle Reference 2	Car	Wet/Damp	Moving from	S to E	Darkness: street lights present and lit	Turning right	On main carriageway
Casualty Reference: 1		Age:	56	Female		Driver/rider	Severity: Slight Injured by vehicle: 2
Vehicle Reference 3	Car	Wet/Damp	Moving from	W to E	Darkness: street lights present and lit	Waiting to turn right	On main carriageway
Vehicle Reference 4	Car	Wet/Damp	Moving from	S to E	Darkness: street lights present and lit	Turning right	On main carriageway

Accidents between dates 01/01/2009 and 31/01/2014 (61) months

Selection:

Notes:

Selected using Manual Selection

Friday	26/11/2010	Time	1900	Slight	at	BUCKNELL RD J/W KINGSLEY RD	BICESTER
E: 457317	N: 223717	Junction Detail:	3	Control	4		
Fine without high winds		Road surface	Dry	Darkness: street lights present and lit			
Vehicle Reference 1	Taxi/Private hire car	Moving from	SE to N	Going ahead other		On main carriageway	
Vehicle Reference 2	Car	Moving from	N to S	Turning right		On main carriageway	
Casualty Reference: 1		Age:	47	Male	Driver/rider	Severity: Slight	Injured by vehicle: 2
Vehicle Reference 3	Car	Moving from	S to NE	Waiting to turn right		On main carriageway	
Saturday	04/12/2010	Time	0900	Slight	at	BUCKINGHAM ROAD AT MINI RBT J/W CHURCHILL ROAD	BICESTER
E: 458596	N: 223616	Junction Detail:	2	Control	4		
Fine without high winds		Road surface	Snow	Daylight:street lights present			
Vehicle Reference 1	Car	Moving from	SE to NE	Turning right		On main carriageway	
Vehicle Reference 2	Pedal Cycle	Moving from	NE to S	Going ahead other		On main carriageway	
Casualty Reference: 1		Age:	21	Male	Driver/rider	Severity: Slight	Injured by vehicle: 2

Accidents between dates 01/01/2009 and 31/01/2014 (61) months

Selection:

Notes:

Selected using Manual Selection

Tuesday 11/01/2011 Time 0605 Slight at B4100 BANBURY RD RBT J/W FIELD ST & NORTH ST & BUCKINGHAM RD BICESTER

E: 458289 N: 222953 Junction Detail: 1 Control 4

Fine without high winds Road surface Wet/Damp Darkness: street lights present and lit

Vehicle Reference 1 Car Moving from N to S Starting On main carriageway

Vehicle Reference 2 Pedal Cycle Moving from N to S Changing lane to left On main carriageway

Casualty Reference: 1 Age: 29 Female Driver/rider Severity: Slight Injured by vehicle: 2

Thursday 13/01/2011 Time 1642 Slight at BUCKINGHAM RD J/W CO-OP CAR PARK BICESTER

E: 458566 N: 223570 Junction Detail: 8 Control 4

Fine without high winds Road surface Wet/Damp Darkness: street lights present and lit

Vehicle Reference 1 Car Moving from W to NE Turning left On main carriageway

Casualty Reference: 1 Age: 41 Female Pedestrian Severity: Slight Injured by vehicle: 1

AccsMap - Accident Analysis System

Accidents between dates 01/01/2009 and 31/01/2014 (61) months

Selection:

Notes:

Selected using Manual Selection

Monday 31/01/2011 Time 1015 Slight at A41 NBOUND J/W A41 BICESTER BYPASS & B4030 OXFORD RD BICESTER

E: 457731 N: 221893 Junction Detail: 1 Control 4

Fine without high winds Road surface Dry

Vehicle Reference 1 Car Moving from S to N Daylight:street lights present

On main carriageway

Vehicle Reference 2 Car Moving from S to N Stopping

On main carriageway

Casualty Reference: 1 Age: 39 Female Driver/rider Severity: Slight Injured by vehicle: 2

Monday 07/02/2011 Time 0835 Slight at B4100 BANBURY RD BY RAIL BRIDGE APPROX 120M N OF J/W ROWAN RD BICESTER

E: 458263 N: 223277 Junction Detail: 0 Control

Fine with high winds Road surface

Vehicle Reference 1 Car Wet/Damp Daylight: no street lighting

On main carriageway

Casualty Reference: 1 Age: 15 Female Pedestrian

Severity: Slight Injured by vehicle: 1

Saturday 19/02/2011 Time 1338 Slight at A4421 BUCKINGHAM RD AT RBT J/W SKIMMINGDISH LANE & A4095 SOUTHWOLD LANE LAUNTON

E: 459005 N: 224344 Junction Detail: 1 Control 4

Raining without high winds Road surface

Vehicle Reference 1 Car Wet/Damp Daylight:street lights present

On main carriageway

Casualty Reference: 1 Age: 37 Male Driver/rider

Severity: Slight Injured by vehicle: 1

AccsMap - Accident Analysis System

Accidents between dates 01/01/2009 and 31/01/2014 (61) months

Selection:

Notes:

Selected using Manual Selection

Saturday	05/03/2011	Time	2316	Slight	at	QUEENS AVE AT J/W BICESTER COMMUNITY COLLEGE	BICESTER
E: 458102	N: 222652	Junction Detail:	3	Control	4		
Fine without high winds		Road surface	Wet/Damp	Darkness: street lights present and lit			
Vehicle Reference 1	Car	Moving from	N to S	Going ahead other		On main carriageway	
Casualty Reference:	1	Age:	56	Male	Driver/rider	Severity:	Slight Injured by vehicle: 1
Saturday	12/03/2011	Time	1715	Serious	at	BUCKINGHAM RD J/W ACCESS FROM GIBBS GARAGE FORECOURT	BICESTER
E: 458551	N: 223518	Junction Detail:	8	Control	4		
Fine without high winds		Road surface	Dry	Daylight:street lights present			
Vehicle Reference 1	Car	Moving from	W to N	Turning left		On main carriageway	
Casualty Reference:	1	Age:	65	Female	Pedestrian	Severity:	Serious Injured by vehicle: 1
Thursday	24/03/2011	Time	2134	Slight	at	A4095 SOUTHWOLD LANE - EXACT LOCATION UNCERTAIN	CAVERSFIELD
E: 458442	N: 224460	Junction Detail:	0	Control			
Fine without high winds		Road surface	Dry	Darkness: street lights present and lit			
Vehicle Reference 1	Car	Moving from	W to E	Going ahead other		On main carriageway	
Vehicle Reference 2	Car	Moving from	W to E	Going ahead other		On main carriageway	
Casualty Reference:	1	Age:	52	Female	Driver/rider	Severity:	Slight Injured by vehicle: 2

Accidents between dates 01/01/2009 and 31/01/2014 (61) months

Selection:

Notes:

Selected using Manual Selection

Wednesday	30/03/2011	Time	2009	Slight	at	B4030 OXFORD RD AT MINI RBT J/W B4030 MIDDLETON STONEY RD	BICESTER
E: 457916	N: 222240	Junction Detail:	2	Control	4		
Fine without high winds							
Vehicle Reference 1	Car	Road surface	Dry	Moving from	W to S	Darkness: street lights present and lit	On main carriageway
Casualty Reference:	1	Age:	33	Female	Driver/rider	Severity:	Slight Injured by vehicle: 1
Casualty Reference:	2	Age:	45	Female	Passenger	Severity:	Slight Injured by vehicle: 1
Vehicle Reference 2	Car	Moving from	S to N	Going ahead other		On main carriageway	
Saturday	02/04/2011	Time	1343	Slight	at	A41 NBOUND 150M N OF RBT J/W A34 & M40	WENDLEBURY
E: 455479	N: 219426	Junction Detail:	0	Control			
Fine without high winds							
Vehicle Reference 1	Car	Road surface	Dry	Moving from	S to NE	Daylight:street lights present	On main carriageway
Vehicle Reference 2	Car	Moving from	S to NE	Going ahead other		On main carriageway	
Casualty Reference:	1	Age:	30	Male	Driver/rider	Severity:	Slight Injured by vehicle: 2
Vehicle Reference 3	Car	Moving from	S to NE	Going ahead other		On main carriageway	
Vehicle Reference 4	Car	Moving from	S to NE	Going ahead other		On main carriageway	

Accidents between dates 01/01/2009 and 31/01/2014 (61) months

Selection: Notes:

Selected using Manual Selection

Sunday 03/04/2011 Time 1700 Slight at A41 NBOUND APPROX 300M SW OF J/W LITTLE CHESTERTON RD CHESTERTON

E: 456086 N: 220015 Junction Detail: 0 Control

Raining without high winds Road surface

Wet/Damp Moving from S to NE Daylight: no street lighting

Vehicle Reference 1 Car

Casualty Reference: 1

Age: 52 Male Driver/rider

Severity: Slight Injured by vehicle: 1

Casualty Reference: 3

Age: 57 Female Passenger

Severity: Slight Injured by vehicle: 1

Vehicle Reference 2 Car

Moving from S to NE Going ahead but held up

Severity: Slight Injured by vehicle: 2

Casualty Reference: 2

Age: 86 Female Passenger

Severity: Slight Injured by vehicle: 2

Vehicle Reference 3 Car

Moving from S to NE Going ahead other

Severity: Slight Injured by vehicle: 2

Saturday 16/04/2011 Time 0920 Slight at QUEENS AVE NEAR POLICE STATION BICESTER

E: 458122 N: 222691 Junction Detail: 0 Control

Fine without high winds Road surface

Dry Moving from NE to S Daylight:street lights present

Vehicle Reference 1 Car

Moving from NE to S Going ahead other

Severity: Slight Injured by vehicle: 2

Vehicle Reference 2 Car

Moving from NE to S Going ahead but held up

Severity: Slight Injured by vehicle: 2

Casualty Reference: 1

Age: 29 Female Driver/rider

Severity: Slight Injured by vehicle: 2

AccsMap - Accident Analysis System

Accidents between dates 01/01/2009 and 31/01/2014 (61) months

Selection:

Notes:

Selected using Manual Selection

Monday 25/04/2011 Time 0330 Slight at A41 NBOUND C/WAY IN ROAD WORKS FOR NEW ROUNDABOUT UNDER CONSTRUCTION APPROX 1 KM S OF RBT J/W BICESTER BYPASS CHESTERTON

E: 457222 N: 221149 Junction Detail: 0 Control

Fine without high winds Road surface Dry

Vehicle Reference 1 Car Moving from S to NE

Darkness: no street lighting

Going ahead other

Age: 29 Male Driver/rider

Moving from S to NE

On main carriageway

Severity: Slight Injured by vehicle: 1

Vehicle Reference 2 Car

Moving from S to NE

On main carriageway

Friday 27/05/2011 Time 0230 Slight at A41 NBOUND AT ROAD WORKS FOR NEW ROUNDABOUT UNDER CONSTRUCTION APPROX 1KM S OF J/W A41 BICESTER BYPASS - CHESTERTON

E: 457220 N: 221142 Junction Detail: 1 Control 4

Fine without high winds Road surface Dry

Moving from S to NE

Darkness: no street lighting

Going ahead other

Age: 38 Male Driver/rider

On main carriageway

Severity: Slight Injured by vehicle: 1

Accidents between dates 01/01/2009 and 31/01/2014 (61) months

Selection: Notes:

Selected using Manual Selection

Saturday 28/05/2011 Time 2145 Serious at A41 NBOUND AT CONSTRUCTION SITE FOR NEW RBT FOR SW BICESTER DEVELOPMENT CHESTERTON

E: 457221 N: 221153 Junction Detail: 1 Control 4
 Fine without high winds Road surface Dry
 Vehicle Reference 1 Car Moving from S to NE Darkness: street lights present and lit
 On main carriageway
 Casualty Reference: 1 Car Driver/rider Severity: Serious Injured by vehicle: 1
 Casualty Reference: 2 Car Passenger Severity: Serious Injured by vehicle: 1
 Casualty Reference: 3 Car Passenger Severity: Serious Injured by vehicle: 1
 Casualty Reference: 4 Car Passenger Severity: Serious Injured by vehicle: 1

Saturday 04/06/2011 Time 0435 Serious at A41 NBOUND AT CONSTRUCTION SITE FOR NEW RBT FOR SW BICESTER DEVELOPMENT CHESTERTON

E: 457220 N: 221148 Junction Detail: 1 Control 4
 Fine without high winds Road surface Dry
 Vehicle Reference 1 Car Moving from S to N Daylight:street lights present
 On main carriageway
 Casualty Reference: 1 Car Driver/rider Severity: Serious Injured by vehicle: 1

Accidents between dates 01/01/2009 and 31/01/2014 (61) months

Selection:

Notes:

Selected using Manual Selection

Monday 06/06/2011 Time 1951 Slight at B4030 OXFORD ROAD NBOUND CWAY APPROX 30M N OF RBT J/W A41 BICESTER

E: 457782 N: 221974 Junction Detail: 0 Control

Fine without high winds Road surface Dry

Daylight:street lights present

Moving from N to SE Changing lane to right

On main carriageway

Casualty Reference: 1

Age: 24

Male

Driver/rider

Severity: Slight Injured by vehicle: 1

Vehicle Reference 2

Moving from N to SE

Going ahead other

On main carriageway

Casualty Reference: 2

Age: 32

Female

Driver/rider

Severity: Slight Injured by vehicle: 2

Wednesday 08/06/2011 Time 2356 Slight at B4030 MIDDLETON STONEY RD J/W A4095 HOWES LANE CHESTERTON

E: 456399 N: 222753 Junction Detail: 3 Control

Fine without high winds Road surface Dry

Darkness: no street lighting

Moving from N to S

On main carriageway

Casualty Reference: 1

Age: 32

Male

Driver/rider

Severity: Slight Injured by vehicle: 1

AccsMap - Accident Analysis System

Accidents between dates 01/01/2009 and 31/01/2014 (61) months

Selection:

Notes:

Selected using Manual Selection

Thursday 09/06/2011 Time 2317 Slight at BUCKNELL RD APPROX 40M SE OF J/W THE APPROACH BICESTER

E: 457896 N: 223192 Junction Detail: 0 Control

Fine without high winds Road surface Dry

Darkness: street lights present and lit

Vehicle Reference 1 Car

Moving from SE to N

Going ahead other

On main carriageway

Vehicle Reference 2 Pedal Cycle

Moving from N to SE

Going ahead other

On main carriageway

Casualty Reference: 1

Age: 64

Male

Driver/rider

Severity: Slight

Injured by vehicle: 2

Friday 01/07/2011 Time 1846 Slight at HOWES LANE J/W SHAKESPEARE DRIVE BICESTER

E: 456936 N: 223602 Junction Detail: 3 Control

Fine without high winds Road surface Dry

Daylight:street lights present

Vehicle Reference 1 Car

Moving from NE to S

Going ahead other

On main carriageway

Casualty Reference: 1

Age: 67

Female

Driver/rider

Severity: Slight

Injured by vehicle: 1

Vehicle Reference 2 Car

Moving from SE to NE

Turning right

On main carriageway

Casualty Reference: 2

Age: 29

Male

Driver/rider

Severity: Slight

Injured by vehicle: 2

Casualty Reference: 3

Age: 23

Female

Passenger

Severity: Slight

Injured by vehicle: 2

AccsMap - Accident Analysis System

Accidents between dates 01/01/2009 and 31/01/2014 (61) months

Selection:

Notes:

Selected using Manual Selection

Friday	01/07/2011	Time	0815	Slight	at	B4100 AT J/W HOME FARM & TURN TO CAVERSFIELD	CAVERSFIELD
E: 458108	N: 225089	Junction Detail:	3	Control	4		
Fine without high winds		Road surface	Dry	Daylight: no street lighting			
Vehicle Reference 1	Car	Moving from	E	to	N	Turning right	On main carriageway
Casualty Reference:	1	Age:	57	Female	Driver/rider		Severity: Slight Injured by vehicle: 1
Vehicle Reference 2	Goods 7.5 tonnes mg	Moving from	N	to	S	Going ahead other	On main carriageway
Saturday	23/07/2011	Time	0030	Slight	at	A41 NBOUND C/WAY IN RD WORKS FOR NEW ROUNDABOUT UNDER CONSTRUCTION APPROX 1 KM S OF RBT J/W BICESTER BYPASS	CHESTERTON
E: 457220	N: 221145	Junction Detail:	1	Control	4		
Raining without high winds		Road surface	Wet/Damp	Darkness: street lights present and lit			
Vehicle Reference 1	Car	Moving from	S	to	N	Going ahead left bend	On main carriageway
Casualty Reference:	1	Age:	42	Female	Driver/rider		Severity: Slight Injured by vehicle: 1

Accidents between dates 01/01/2009 and 31/01/2014 (61) months

Selection:

Selected using Manual Selection

Notes:

Friday	05/08/2011	Time	1038	Slight	at	QUEENS AVE J/W KINGSCLERE RD	BICESTER	
E: 458054	N: 222520	Junction Detail:	3	Control	4			
Fine without high winds		Road surface	Dry	Moving from	NE to W	Daylight:street lights present		
Vehicle Reference 1	Car			Turning right			On main carriageway	
Vehicle Reference 2	Motor Cycle over 1			Overtaking stat vehicle O/S			On main carriageway	
Casualty Reference:	1	Age:	19	Male	Driver/rider		Severity: Slight	Injured by vehicle: 2
Monday	22/08/2011	Time	1935	Slight	at	SHAKESPEARE DRIVE J/W DRYDEN AVENUE	BICESTER	
E: 456995	N: 223548	Junction Detail:	3	Control	4			
Fine without high winds		Road surface	Dry	Moving from	SE to N	Daylight:street lights present		
Vehicle Reference 1	Car			Going ahead other			On main carriageway	
Casualty Reference:	1	Age:	9	Male	Pedestrian		Severity: Slight	Injured by vehicle: 1

Accidents between dates 01/01/2009 and 31/01/2014 (61) months

Selection: Notes:

Selected using Manual Selection

Monday	12/09/2011	Time	0840	Slight	at	QUEENS AVE AT PELICAN CROSSING JUST N OF POLICE STATION	BICESTER
E: 458138	N: 222718	Junction Detail:	0	Control			
Fine without high winds							
Vehicle Reference 1	Car	Wet/Damp	Moving from	S to NE	Daylight:street lights present	Going ahead other	On main carriageway
Vehicle Reference 2	Car		Moving from	NE to S	Going ahead other		On main carriageway
Vehicle Reference 3	Car		Moving from	NE to S	Going ahead other		On main carriageway
Casualty Reference:	1	Age:	44	Female	Driver/rider	Severity:	Slight Injured by vehicle: 3
Tuesday	18/10/2011	Time	1237	Slight	at	BUCKINGHAM RD AT PELICAN CROSSING APPROX 60M SW OF J/W WOODFIELD RD	BICESTER
E: 458430	N: 223243	Junction Detail:	0	Control			
Fine without high winds							
Vehicle Reference 1	Van or Goods	Dry	Moving from	S to NE	Daylight:street lights present	Going ahead other	On main carriageway
Vehicle Reference 2	Pedal Cycle		Moving from	E to W	Going ahead other		On main carriageway
Casualty Reference:	1	Age:	28	Female	Driver/rider	Severity:	Slight Injured by vehicle: 2

AccsMap - Accident Analysis System

Accidents between dates 01/01/2009 and 31/01/2014 (61) months

Selection:

Notes:

Selected using Manual Selection

Wednesday 26/10/2011 Time 1032 Slight at A41 BICESTER BYPASS J/W A41 & B4030 OXFORD BICESTER

E: 457772 N: 221903 Junction Detail: 1 Control 4

Fine without high winds Road surface Dry

Vehicle Reference 1 Car Moving from SE to N Daylight:street lights present

On main carriageway

Vehicle Reference 2 Motor Cycle over 1 Moving from SE to N Going ahead other

On main carriageway

Casualty Reference: 1 Age: 34 Male Driver/rider Severity: Slight Injured by vehicle: 2

Sunday 30/10/2011 Time 1224 Slight at BUCKNELL RD APPROX 150M SE OF J/W HAWKWELL FARM CAVERSFIELD - SOME UNCERTAINTY
OVER EXACT LOCATION

E: 456959 N: 224247 Junction Detail: 0 Control

Fine without high winds Road surface Dry

Vehicle Reference 1 Car Moving from N to SE Daylight: no street lighting

On main carriageway

Vehicle Reference 2 Car Moving from SE to N Going ahead other

On main carriageway

Casualty Reference: 1 Age: 52 Male Driver/rider Severity: Slight Injured by vehicle: 2

AccsMap - Accident Analysis System

Accidents between dates 01/01/2009 and 31/01/2014 (61) months

Selection:

Notes:

Selected using Manual Selection

Sunday	13/11/2011	Time	0105	Slight	at	BUCKINGHAM RD AT J/W CHILTERN APPROACH	BICESTER
E: 458399	N: 223173	Junction Detail:	3	Control	2		
Fine without high winds		Road surface	Wet/Damp	Darkness: street lights present and lit			
Vehicle Reference 1	Taxi/Private hire car	Moving from	S to E	Turning right		On main carriageway	
	Casualty Reference:	1	Age:	34	Male	Pedestrian	Severity: Slight Injured by vehicle: 1
Monday	14/11/2011	Time	1715	Slight	at	QUEENS AVE J/W KINGS END	BICESTER
E: 458038	N: 222473	Junction Detail:	3	Control	4		
Raining without high winds		Road surface	Wet/Damp	Darkness: street lights present and lit			
Vehicle Reference 1	Car	Moving from	SE to NE	Turning right		On main carriageway	
	Casualty Reference:	1	Age:	51	Female	Driver/rider	Severity: Slight Injured by vehicle: 1
Vehicle Reference 2	Car	Moving from	NE to S	Going ahead other		On main carriageway	

Accidents between dates 01/01/2009 and 31/01/2014 (61) months

Selection:

Selected using Manual Selection

Notes:

Sunday 27/11/2011 Time 1000 Slight at A41 SBOUND AT NEW RBT APPROX 800M S OF J/W A41 BICESTER BYPASS CHESTERTON

E: 457265 N: 221190 Junction Detail: 1 Control 4

Fine without high winds Road surface Dry

Daylight:street lights present

Vehicle Reference 1 Car Moving from NE to S

Going ahead other

On lay-by or hard shoulder

Vehicle Reference 2 Car Moving from NE to S

Going ahead other

On main carriageway

Casualty Reference: 1 Age: 23 Female

Pedestrian

Severity: Slight Injured by vehicle: 2

Monday 28/11/2011 Time 1330 Slight at A41 BICESTER BYPASS J/W A41 & B4030 OXFORD BICESTER

E: 457768 N: 221898 Junction Detail: 1 Control 4

Fine without high winds Road surface Dry

Daylight:street lights present

Vehicle Reference 1 Car Moving from E to S

Turning left

On main carriageway

Vehicle Reference 2 Car Moving from E to S

Turning left

On main carriageway

Casualty Reference: 1 Age: 23 Male

Passenger

Severity: Slight Injured by vehicle: 2

Casualty Reference: 2 Age: 21 Male

Passenger

Severity: Slight Injured by vehicle: 2

AccsMap - Accident Analysis System

Accidents between dates 01/01/2009 and 31/01/2014 (61) months

Selection:

Notes:

Selected using Manual Selection

Tuesday 29/11/2011 Time 1605 Slight at A41 SOUTHBOUND C/WAY 350M N OF RBT J/W M40 (SOME UNCERTAINTY OVER EXACT LOCATION)
WENDLEBURY

E: 455648 N: 219568 Junction Detail: 0 Control

Fine without high winds Road surface Dry

Darkness: street lighting unknown

Vehicle Reference 1 Car Moving from NE to S

Going ahead other

On main carriageway

Vehicle Reference 2 Car

Moving from NE to S

Going ahead other

On main carriageway

Casualty Reference: 1

Age: 37

Male

Driver/rider

Severity: Slight

Injured by vehicle: 2

Friday 02/12/2011 Time 1824 Slight at A41 NBOUND C/WAY J/W NEW RBT WITH VENDEE DRIVE CHESTERTON

E: 457217 N: 221145 Junction Detail: 1 Control 4

Fine without high winds Road surface Dry

Darkness: street lights present and lit

Vehicle Reference 1 Car Moving from S to NE

Going ahead other

On main carriageway

Vehicle Reference 2 Car

Moving from S to NE

Going ahead other

On main carriageway

Casualty Reference: 1

Age: 53

Male

Driver/rider

Severity: Slight

Injured by vehicle: 2

Vehicle Reference 3 Goods 7.5 tonnes mg

Moving from S to E

Turning right

On main carriageway

Accidents between dates 01/01/2009 and 31/01/2014 (61) months

Selection: Notes:

Selected using Manual Selection

Monday 12/12/2011 Time 0753 Slight at B4030 MIDDLETON STONEY RD APPROX 1KM NW OF J/W A4095 CHESTERTON RD CHESTERTON

E: 455448 N: 223093 Junction Detail: 0 Control

Fine without high winds

Road surface

Frost/Ice

Daylight: no street lighting

Vehicle Reference 1 Car

Moving from N to SE

Going ahead other

On main carriageway

Casualty Reference: 1 Driver/rider Age: 61 Female Injured by vehicle: 1 Severity: Slight

Casualty Reference: 2 Passenger Age: 40 Female Injured by vehicle: 1 Severity: Slight

Casualty Reference: 3 Passenger Age: 2 Male Injured by vehicle: 1 Severity: Slight

Vehicle Reference 2 Car Moving from SE to N Going ahead other On main carriageway

Casualty Reference: 4 Driver/rider Age: 26 Female Injured by vehicle: 2 Severity: Slight

Sunday 18/12/2011 Time 0918 Slight at A41 SBOUND 250M NE OF J/W M40 WENDLEBURY

E: 455536 N: 219460 Junction Detail: 0 Control

Other

Road surface

Frost/Ice

Daylight:street lights present

Vehicle Reference 1 Car

Moving from NE to S

Going ahead other

On main carriageway

Casualty Reference: 1 Driver/rider Age: 58 Female Injured by vehicle: 1 Severity: Slight

AccsMap - Accident Analysis System

Accidents between dates 01/01/2009 and 31/01/2014 (61) months

Selection:

Notes:

Selected using Manual Selection

Wednesday 04/01/2012 Time 1414 Fatal at B4030 MIDDLETON STONEY RD APPROX 110M SE OF J/W SHAKESPEARE DRIVE BICESTER

E: 457079 N: 222517 Junction Detail: 0 Control

Fine without high winds Road surface Dry

Daylight: no street lighting

Vehicle Reference 1 Goods 7.5 tonnes mg Moving from N to SE

Going ahead other

On main carriageway

Casualty Reference: 1

Age: 30

Male

Pedestrian

Severity: Fatal

Injured by vehicle: 1

Friday 13/01/2012 Time 0015 Slight at A41 NBOUND C/WAY J/W NEW RBT WITH VENDEE DRIVE CHESTERTON

E: 457218 N: 221150 Junction Detail: 1 Control 4

Fine without high winds Road surface Dry

Darkness: street lights present and lit

Vehicle Reference 1 Car Moving from S to NE

Going ahead other

On main carriageway

Casualty Reference: 1

Age: 43

Male

Driver/rider

Severity: Slight

Injured by vehicle: 1

AccsMap - Accident Analysis System

Accidents between dates 01/01/2009 and 31/01/2014 (61) months

Selection:

Notes:

Selected using Manual Selection

Saturday 25/02/2012 Time 1152 Slight at A41 SBOUND APPROX 160M SW OF J/W EXIT SLIP TO WENDLEBURY CHESTERTON

E: 456242 N: 220133 Junction Detail: 0 Control

Fine without high winds Road surface Dry

Daylight: no street lighting

Moving from NE to S

Going ahead other

On main carriageway

Vehicle Reference 1 Car Casualty Reference: 1 Age: 21 Male Driver/rider Severity: Slight Injured by vehicle: 1

Casualty Reference: 2 Age: 19 Male Passenger Severity: Slight Injured by vehicle: 1

Vehicle Reference 2 Car Moving from NE to S Going ahead other On main carriageway

Casualty Reference: 3 Age: 35 Male Driver/rider Severity: Slight Injured by vehicle: 2

Sunday 11/03/2012 Time 1055 Slight at B4100 AT BEND APPROX 30M N OF HOME FARM & TURN TO CAVERSFIELD CAVERSFIELD

E: 458088 N: 225113 Junction Detail: 0 Control

Fine without high winds Road surface Dry

Daylight: no street lighting

Moving from S to N

Going ahead left bend

On main carriageway

Vehicle Reference 1 Car Casualty Reference: 1 Age: 19 Male Driver/rider Severity: Slight Injured by vehicle: 1

Accidents between dates 01/01/2009 and 31/01/2014 (61) months

Selection:

Selected using Manual Selection

Notes:

Tuesday 20/03/2012 Time 1835 Slight at A41 NBOUND APPROX 120M SW OF J/W A41 BICESTER BYPASS & B4030 OXFORD RD BICESTER

E: 457684 N: 221806 Junction Detail: 0 Control
 Fine without high winds Road surface

Dry

Daylight:street lights present

Moving from S to NE

Going ahead other

On main carriageway

Casualty Reference: 1

Age: 43

Male

Driver/rider

Severity: Slight Injured by vehicle: 1

Thursday 29/03/2012 Time 0945 Slight at A41 BICESTER BYPASS J/W NEW RBT AT J/W VENDEE DRIVE) CHESTERTON - PROBBALE LOCATION -

E: 457236 N: 221162 Junction Detail: 1 Control
 Fine without high winds Road surface

Dry

Daylight:street lights present

Moving from NE to S

Going ahead other

On main carriageway

Vehicle Reference 1 Goods 7.5 tonnes mg

Moving from NE to S

Going ahead other

On main carriageway

Vehicle Reference 2 Car

Moving from NE to S

Driver/rider

Severity: Slight Injured by vehicle: 2

Casualty Reference: 1

Age: 67

Male

Accidents between dates 01/01/2009 and 31/01/2014 (61) months

Selection:

Selected using Manual Selection

Notes:

Monday	02/04/2012	Time	1750	Slight	at	BUCKINGHAM RD AT MINI RBT J/W CHURCHILL RD	BICESTER
E: 458596	N: 223626	Junction Detail:	2	Control	4		
Fine without high winds		Road surface	Dry	Daylight: street lighting unknown			
Vehicle Reference 1	Car	Moving from	SE to N	Going ahead other		On main carriageway	
Vehicle Reference 2	Pedal Cycle	Moving from	N to S	Going ahead other		On main carriageway	
Casualty Reference:	1	Age:	52	Female	Driver/rider	Severity:	Slight Injured by vehicle: 2
Friday	04/05/2012	Time	1711	Slight	at	BUCKINGHAM ROAD J/W NEW STREET	BICESTER
E: 458327	N: 223034	Junction Detail:	3	Control	4		
Fine without high winds		Road surface	Dry	Daylight:street lights present			
Vehicle Reference 1	Car	Moving from	N to S	Going ahead other		On main carriageway	
Casualty Reference:	2	Age:	24	Female	Driver/rider	Severity:	Slight Injured by vehicle: 1
Vehicle Reference 2	Van or Goods 3.5 to	Moving from	N to S	Going ahead other		On main carriageway	
Casualty Reference:	1	Age:	59	Male	Driver/rider	Severity:	Slight Injured by vehicle: 2

Accidents between dates 01/01/2009 and 31/01/2014 (61) months

Selection:

Notes:

Selected using Manual Selection

Friday 08/06/2012 Time 1450 Slight at A41 SBOUND 100M N OF J/W M40 WENDLEBURY - EXACT LOCATION NOT SUPPLIED

E: 455505 N: 219428 Junction Detail: 0 Control

Fine without high winds

Road surface

Wet/Damp

Daylight:street lights present

Vehicle Reference 1 Car

Moving from NE to S

Going ahead other

On main carriageway

Casualty Reference: 1 Age: 20 Male Driver/rider Severity: Slight Injured by vehicle: 1

Casualty Reference: 2 Age: 20 Male Passenger Severity: Slight Injured by vehicle: 1

Casualty Reference: 3 Age: 21 Male Passenger Severity: Slight Injured by vehicle: 1

Vehicle Reference 2 Car

Moving from NE to S

Going ahead but held up

On main carriageway

Wednesday 20/06/2012 Time 2151 Slight at A41 NBOUND J/W LITTLE CHESTERTON RD CHESTERTON

E: 456300 N: 220222 Junction Detail: 3 Control 4

Fine without high winds

Road surface

Dry

Daylight: no street lighting

Vehicle Reference 1 Motorcycle over 500

Moving from S to N

Turning left

On main carriageway

Casualty Reference: 1 Age: 30 Male Driver/rider Severity: Slight Injured by vehicle: 1

Accidents between dates 01/01/2009 and 31/01/2014 (61) months

Selection: Notes:

Selected using Manual Selection

Saturday 30/06/2012 Time 1356 Slight at BUCKINGHAM RD AT TRAFFIC CALMING BUILD OUT APPROX 100M S OF J/W COOPERS GREEN BICESTER

E: 458820 N: 224060 Junction Detail: 0 Control

Fine without high winds Road surface Dry

Vehicle Reference 1 Car Moving from NE to S Daylight:street lights present

On main carriageway

Vehicle Reference 2 Car Moving from NE to S Going ahead but held up

On main carriageway

Casualty Reference: 1 Age: 23 Female Driver/rider Severity: Slight Injured by vehicle: 2

Casualty Reference: 2 Age: 42 Female Passenger Severity: Slight Injured by vehicle: 2

Casualty Reference: 3 Age: 35 Female Passenger Severity: Slight Injured by vehicle: 2

Casualty Reference: 4 Age: 26 Female Passenger Severity: Slight Injured by vehicle: 2

Monday 02/07/2012 Time 1329 Slight at BUCKNELL RD AT BEND APPROX 30M NW OF J/W GEORGE ST BICESTER

E: 457468 N: 223501 Junction Detail: 0 Control

Raining without high winds Road surface Wet/Damp

Vehicle Reference 1 Car Moving from SE to N Daylight:street lights present

On main carriageway

Casualty Reference: 1 Age: 30 Female Driver/rider Severity: Slight Injured by vehicle: 1

Accidents between dates 01/01/2009 and 31/01/2014 (61) months

Selection:

Selected using Manual Selection

Notes:

Monday 16/07/2012 Time 1748 Slight at A41 BICESTER BYPASS J/W RBT AT J/W VENDEE DRIVE) CHESTERTON

E: 457233 N: 221221 Junction Detail: 1 Control 4

Fine without high winds Road surface Dry

Vehicle Reference 1 Car Moving from S to SE Daylight:street lights present

Turning right

On main carriageway

Vehicle Reference 2 Motorcycle over 500 Moving from S to NE

Going ahead other

On main carriageway

Casualty Reference: 1

Age: 34

Male

Driver/rider

Severity: Slight Injured by vehicle: 2

Saturday 04/08/2012 Time 0421 Slight at A41 NBOUND AT RBT J/W VENDEE DRIVE AND LINK ROAD TO WENDLEBURY CHESTERTON

E: 457223 N: 221169 Junction Detail: 1 Control 4

Fine without high winds Road surface Dry

Vehicle Reference 1 Car Moving from S to N Darkness: street lights present and lit

Going ahead left bend

On main carriageway

Casualty Reference: 1

Age: 24

Male

Driver/rider

Severity: Slight Injured by vehicle: 1

Casualty Reference: 2

Age: 33

Female

Passenger

Severity: Slight Injured by vehicle: 1

Accidents between dates 01/01/2009 and 31/01/2014 (61) months

Selection:

Selected using Manual Selection

Notes:

Tuesday	14/08/2012	Time	1145	Slight	at	QUEENS AVE JUST N OF POLICE STATION	BICESTER
E: 458132	N: 222710	Junction Detail:	0	Control			
Fine without high winds							
	Vehicle Reference 1	Van or Goods	3.5 to	Road surface	Dry	Daylight:street lights present	On main carriageway
	Vehicle Reference 2	Car		Moving from	S to NE	Going ahead other	On main carriageway
	Casualty Reference:	1	Age:	34	Female	Driver/rider	Severity: Slight Injured by vehicle: 2
Sunday	26/08/2012	Time	1515	Slight	at	A41 SBOUND CWAY AT LAYBY APPROX 350M N OF RBT J/W M40	WENDLEBURY
E: 455634	N: 219554	Junction Detail:	0	Control			
Fine without high winds							
	Vehicle Reference 1	Car		Road surface	Dry	Daylight:street lights present	On main carriageway
	Casualty Reference:	1	Age:	42	Male	Driver/rider	Severity: Slight Injured by vehicle: 1
	Vehicle Reference 2	Car		Moving from	NE to S	Overtaking stat vehicle O/S	On main carriageway
	Vehicle Reference 3	Car		Moving from	NE to	Parked	On lay-by or hard shoulder
	Casualty Reference:	2	Age:	52	Male	Driver/rider	Severity: Slight Injured by vehicle: 3
	Vehicle Reference 4	Goods	7.5 tonnes mg	Moving from	NE to	Parked	On lay-by or hard shoulder

Accidents between dates 01/01/2009 and 31/01/2014 (61) months

Selection:

Notes:

Selected using Manual Selection

Tuesday	28/08/2012	Time	1500	Slight	at	A44421 BUICKINGHAM RD RBT J/W A4095 SOUTHWOLD LN	BICESTER
E: 458976	N: 224355	Junction Detail:	1	Control	4		
Fine without high winds		Road surface	Dry	Daylight:street lights present			
Vehicle Reference 1	Motor Cycle over 50	Moving from	E	to	W	Going ahead other	On main carriageway
Casualty Reference:	1	Age:	18	Male	Driver/rider	Severity:	Slight Injured by vehicle: 1
Vehicle Reference 2	Car	Moving from	S	to	N	Going ahead other	On main carriageway
Friday	07/09/2012	Time	0735	Slight	at	KINGS END AT PELICAN XING JUST S OF J/W KINGS AVE	BICESTER
E: 457982	N: 222358	Junction Detail:	0	Control			
Fine without high winds		Road surface	Dry	Daylight:street lights present			
Vehicle Reference 1	Car	Moving from	N	to	S	Going ahead other	On main carriageway
Vehicle Reference 2	Pedal Cycle	Moving from	E	to	W	Going ahead other	On main carriageway
Casualty Reference:	1	Age:	15	Female	Driver/rider	Severity:	Slight Injured by vehicle: 2

AccsMap - Accident Analysis System

Accidents between dates 01/01/2009 and 31/01/2014 (61) months

Selection:

Notes:

Selected using Manual Selection

Wednesday 12/09/2012 Time 0935 Slight at SHAKESPEARE DRIVE J/W WANSBECK DRIVE BICESTER

E: 456920 N: 222762 Junction Detail: 3 Control 4

Fine without high winds Road surface Dry

Daylight:street lights present

Vehicle Reference 1 Car Moving from W to S

Turning right

On main carriageway

Vehicle Reference 2 Car Moving from S to N

Going ahead other

On main carriageway

Casualty Reference: 1 Age: 74 Female Driver/rider Severity: Slight Injured by vehicle: 2

Monday 22/10/2012 Time 0631 Slight at B4100 AT BEND APPROX 70M N OF HOME FARM & TURN TO CAVERSFIELD CAVERSFIELD

E: 458065 N: 225142 Junction Detail: 0 Control

Fine without high winds Road surface Wet/Damp

Darkness: no street lighting

Vehicle Reference 1 Car Moving from N to SE

Going ahead other

On main carriageway

Casualty Reference: 1 Age: 45 Female Driver/rider Severity: Slight Injured by vehicle: 1

Vehicle Reference 2 Car Moving from SE to N

Going ahead other

On main carriageway

Casualty Reference: 2 Age: 55 Male Driver/rider Severity: Slight Injured by vehicle: 2

AccsMap - Accident Analysis System

Accidents between dates 01/01/2009 and 31/01/2014 (61) months

Selection:

Notes:

Selected using Manual Selection

Friday 09/11/2012 Time 0143 Serious at A4095 150M SW OF J/W VENDEE DRIVE BY ACCESS TO PRIVATE DRIVE CHESTERTON

E: 456196 N: 222458 Junction Detail: 8 Control 4
 Fine without high winds Road surface Dry
 Vehicle Reference 1 Car Moving from S to NE Stopping
 On main carriageway

Casualty Reference: 1 Age: 19 Male Driver/rider Severity: Serious Injured by vehicle: 1

Sunday 11/11/2012 Time 1830 Serious at BUCKNELL ROAD APPROX 50M N OF J/W ACCESS TO HAWKSWELL FARM CAVERSFIELD

E: 456834 N: 224419 Junction Detail: 0 Control
 Fine without high winds Road surface Dry
 Vehicle Reference 1 Car Moving from N to SE Going ahead other
 On main carriageway

Casualty Reference: 1 Age: 26 Male Pedestrian Severity: Serious Injured by vehicle: 1

Thursday 22/11/2012 Time 1409 Slight at B4100 BANBURY RD RBT J/W FIELD ST & NORTH ST & BUCKINGHAM RD BICESTER

E: 458290 N: 222951 Junction Detail: 2 Control 4
 Raining without high winds Road surface Wet/Damp
 Vehicle Reference 1 Car Moving from NE to S Going ahead other
 On main carriageway

Vehicle Reference 2 Car Moving from S to SE Turning right
 On main carriageway
 Casualty Reference: 1 Age: 43 Female Driver/rider Severity: Slight Injured by vehicle: 2

Accidents between dates 01/01/2009 and 31/01/2014 (61) months

Selection:

Selected using Manual Selection

Notes:

Thursday	06/12/2012	Time	1932	Serious	at	A41 NBOUND APPROX 180M SW OF J/W A41 BICESTER BYPASS	BICESTER
E: 457640	N: 221729	Junction Detail:	0	Control			
Fine without high winds							
Vehicle Reference 1	Car	Road surface	Wet/Damp	Darkness: no street lighting			
		Moving from	S to NE	Going ahead other		On main carriageway	
Casualty Reference:	1	Age:	53	Female	Driver/rider	Severity:	Serious Injured by vehicle: 1
Saturday	05/01/2013	Time	1637	Slight	at	B4030 OXFORD ROAD MINI RBT J/W B4030 MIDDLETON STONEY ROAD	BICESTER
E: 457915	N: 222246	Junction Detail:	2	Control			
Fine without high winds							
Vehicle Reference 1	Car	Road surface	Dry	Darkness: street lights present and lit			
		Moving from	W to S	Turning right		On main carriageway	
Vehicle Reference 2	Motorcycle over 500	Moving from	S to N	Going ahead other		On main carriageway	
Casualty Reference:	1	Age:	31	Male	Driver/rider	Severity:	Slight Injured by vehicle: 2

AccsMap - Accident Analysis System

Accidents between dates 01/01/2009 and 31/01/2014 (61) months

Selection:

Notes:

Selected using Manual Selection

Thursday 10/01/2013 Time 1820 Slight at B4030 MIDDLETON STONEY ROAD RBT J/W SHAKESPEARE DRIVE & WHITELANDS WAY BICESTER

E: 456990 N: 222529 Junction Detail: 1 Control 4

Fine without high winds Road surface Dry

Darkness: street lights present and lit

Vehicle Reference 1 Car Moving from E to W

On main carriageway

Vehicle Reference 2 Car Moving from E to W

On main carriageway

Casualty Reference: 1 Age: 27 Female Driver/rider Severity: Slight Injured by vehicle: 2

Sunday 20/01/2013 Time 1220 Serious at A41 AT RBT J/W B4030 VENDEE DRIVE CHESTERTON

E: 457222 N: 221168 Junction Detail: 1 Control 4

Snowing without high winds Road surface Wet/Damp

Daylight

Vehicle Reference 1 Minibus Moving from S to NE

On main carriageway

Casualty Reference: 1 Age: 41 Female Passenger Severity: Serious Injured by vehicle: 1

Casualty Reference: 2 Age: 40 Female Passenger Severity: Slight Injured by vehicle: 1

Casualty Reference: 3 Age: 62 Female Passenger Severity: Slight Injured by vehicle: 1

Accidents between dates 01/01/2009 and 31/01/2014 (61) months

Selection:

Notes:

Selected using Manual Selection

Saturday	26/01/2013	Time	1134	Serious	at	A41 NBOUND J/W LITTLE CHESTERTON RD	CHESTERTON
E: 456306	N: 220246	Junction Detail:	3	Control	4		
Fine without high winds							
Vehicle Reference 1	Car	Road surface	Wet/Damp	Moving from	S to W	Daylight	Turning left
Casualty Reference:	1	Age:	33	Female	Driver/rider	Severity:	Slight Injured by vehicle: 1
Casualty Reference:	2	Age:	35	Female	Passenger	Severity:	Slight Injured by vehicle: 1
Casualty Reference:	3	Age:	24	Female	Passenger	Severity:	Slight Injured by vehicle: 1
Casualty Reference:	4	Age:	27	Female	Passenger	Severity:	Slight Injured by vehicle: 1
Casualty Reference:	5	Age:	38	Female	Passenger	Severity:	Serious Injured by vehicle: 1
On main carriageway							
Sunday	03/02/2013	Time	1300	Slight	at	A41 NBOUND CWAY APPROX 40M SW OF RBT J/W VENDEE DRIVE	CHESTERTON
E: 457203	N: 221114	Junction Detail:	0	Control			
Fine without high winds							
Vehicle Reference 1	Car	Road surface	Dry	Moving from	S to NE	Daylight	Stopping
Casualty Reference:	1	Age:	32	Female	Driver/rider	Severity:	Slight Injured by vehicle: 1
Casualty Reference:	2	Age:	29	Male	Passenger	Severity:	Slight Injured by vehicle: 1
Vehicle Reference 2	Car	Moving from	S to NE	Going ahead but held up		On main carriageway	

AccsMap - Accident Analysis System

Accidents between dates 01/01/2009 and 31/01/2014 (61) months

Selection:

Notes:

Selected using Manual Selection

Thursday	21/02/2013	Time	1855	Slight	at	BUCKINGHAM RD JUST NE OF J/W NEW ST	BICESTER
E: 458342	N: 223061	Junction Detail:	3	Control	4		
Fine without high winds		Road surface	Dry	Darkness: street lights present and lit			
Vehicle Reference 1	Car	Moving from	NE to S	Going ahead other		On main carriageway	
	Casualty Reference: 1	Age:	6	Male	Passenger	Severity: Slight	Injured by vehicle: 1
Vehicle Reference 2	Car	Moving from	NE to S	Stopping		On main carriageway	
Vehicle Reference 3	Car	Moving from	NE to S	Going ahead but held up		On main carriageway	
Vehicle Reference 4	Car	Moving from	NE to S	Going ahead but held up		On main carriageway	
Thursday	21/02/2013	Time	1827	Slight	at	QUEENS AVE NEAR PELICAN CROSSING JUST N OF POLICE STATION	BICESTER
E: 458136	N: 222723	Junction Detail:	0	Control			
Fine without high winds		Road surface	Dry	Darkness: street lights present and lit			
Vehicle Reference 1	Car	Moving from	S to NE	Stopping		On main carriageway	
	Casualty Reference: 1	Age:	58	Male	Driver/rider	Severity: Slight	Injured by vehicle: 1
Vehicle Reference 2	Car	Moving from	S to NE	Stopping		On main carriageway	
Vehicle Reference 3	Car	Moving from	S to NE	Stopping		On main carriageway	

AccsMap - Accident Analysis System

Accidents between dates 01/01/2009 and 31/01/2014 (61) months

Selection:

Notes:

Selected using Manual Selection

Saturday 02/03/2013 Time 1855 Slight at A41 OXFORD ROAD AT J/W PIONEER WAY (NEW SIGNALLED JUNCTION FOR PREMIER INN ETC)
BICESTER

E: 457583 N: 221636 Junction Detail: 3 Control 2

Fine without high winds Road surface Dry

Darkness: street lights present and lit

Vehicle Reference 1 Car Moving from S to NE

Going ahead other

On main carriageway

Vehicle Reference 2 Car Moving from S to NE

Going ahead but held up

On main carriageway

Casualty Reference: 1 Age: 68 Male Driver/rider Severity: Slight Injured by vehicle: 2

Thursday 21/03/2013 Time 0406 Slight at A41 NBOUND J/W VENDEE DRIVE CHESTERTON

E: 457223 N: 221156 Junction Detail: 1 Control 4

Fine without high winds Road surface Dry

Darkness: street lights present and lit

Dry

Going ahead other

On main carriageway

Casualty Reference: 1 Age: 29 Male Driver/rider Severity: Slight Injured by vehicle: 1

Wednesday 03/04/2013 Time 0946 Slight at BUCKINGHAM RD AT PELICAN XNG APPROX 60M SW OF J/W WOODFIELD RD BICESTER

E: 458427 N: 223243 Junction Detail: 0 Control

Fine without high winds Road surface Dry

Daylight

Dry

Going ahead other

On main carriageway

Casualty Reference: 1 Age: 47 Male Pedestrian Severity: Slight Injured by vehicle: 1

AccsMap - Accident Analysis System

Accidents between dates 01/01/2009 and 31/01/2014 (61) months

Selection:

Notes:

Selected using Manual Selection

Thursday 04/04/2013 Time 1900 Slight at B4100 FIELD ST APPROX 50M S OF MINI RBT J/W B4100 BANBURY ROAD & BUCKINGHAM ROAD
BICESTER - EXACT LOCATION UNCERTAIN

E: 458242 N: 222900 Junction Detail: 0 Control

Fine without high winds Road surface Dry

Vehicle Reference 1 Pedal Cycle Moving from S to NE Darkness: street lights present and lit

On main carriageway

Casualty Reference: 1

Passenger

Female

Age: 19

Going ahead other

Severity: Slight Injured by vehicle: 1

Vehicle Reference 2 Car

Moving from S to NE Going ahead but held up

On main carriageway

Thursday 06/06/2013 Time 1715 Serious at B4100 APPROX 25M N OF RBT J/W A4095 SOUTWOLD LANE CAVERSFIELD

E: 458149 N: 224528 Junction Detail: 0 Control

Fine without high winds Road surface Dry

Daylight

Moving from S to S U-turn

On main carriageway

Vehicle Reference 2 Motorcycle over 500

Moving from S to N Overtaking moving vehicle O/S

On main carriageway

Casualty Reference: 1

Driver/rider

Male

Age: 59

Severity: Serious Injured by vehicle: 2

AccsMap - Accident Analysis System

Accidents between dates 01/01/2009 and 31/01/2014 (61) months

Selection:

Notes:

Selected using Manual Selection

Wednesday	03/07/2013	Time	1905	Slight	at	A41 SBOUND AT RBT J/W VENDEE DRIVE	CHESTERTON
E: 457279	N: 221237	Junction Detail:	1	Control	4		
Fine without high winds		Road surface	Dry	Daylight			
Vehicle Reference 1	Car	Moving from	NE to S	Going ahead other		On main carriageway	
Casualty Reference:	1	Age:	37	Male	Driver/rider	Severity:	Slight Injured by vehicle: 1
Vehicle Reference 2	Car	Moving from	NE to S	Going ahead but held up		On main carriageway	
Tuesday	30/07/2013	Time	1109	Slight	at	QUEENS AVE AT ZEBRA XING JUST N OF POLICE STATION	BICESTER
E: 458133	N: 222713	Junction Detail:	0	Control			
Fine without high winds		Road surface	Dry	Daylight			
Vehicle Reference 1	Car	Moving from	S to NE	Going ahead other		On main carriageway	
Casualty Reference:	1	Age:	83	Male	Pedestrian	Severity:	Slight Injured by vehicle: 1

Accidents between dates 01/01/2009 and 31/01/2014 (61) months

Selection: Notes:

Selected using Manual Selection

Saturday 10/08/2013 Time 1529 Slight at A41 OXFORD ROAD AT J/W PIONEER WAY (NEW SIGNALLED JUNCTION FOR PREMIER INN ETC)
BICESTER

E: 457628 N: 221675 Junction Detail: 3 Control 2

Fine without high winds Road surface Dry

Daylight

Vehicle Reference 1 Car Moving from NE to S Going ahead other

On main carriageway

Casualty Reference: 1 Age: 21 Female Driver/rider Severity: Slight Injured by vehicle: 1

Vehicle Reference 2 Car Moving from NE to S Going ahead but held up

On main carriageway

Casualty Reference: 2 Age: 46 Female Driver/rider Severity: Slight Injured by vehicle: 2

Vehicle Reference 3 Car Moving from NE to S Going ahead but held up

On main carriageway

Wednesday 14/08/2013 Time 2350 Slight at SHAKESPEARE DRIVE J/W DRYDEN AVENUE BICESTER

E: 456989 N: 223556 Junction Detail: 3 Control 4

Fine without high winds Road surface Dry

Darkness: street lights present and lit

Vehicle Reference 1 Car Moving from S to NE Going ahead other

On main carriageway

Casualty Reference: 1 Age: 19 Female Driver/rider Severity: Slight Injured by vehicle: 1

AccsMap - Accident Analysis System

Accidents between dates 01/01/2009 and 31/01/2014 (61) months

Selection:

Notes:

Selected using Manual Selection

Thursday 15/08/2013 Time 1448 Slight at B4100 BANBURY RD MINI RBT J/W FIELD ST & NORTH ST & BUCKINGHAM RD BICESTER

E: 458294 N: 222955 Junction Detail: 2 Control 4

Fine without high winds

Road surface

Wet/Damp

Daylight

Vehicle Reference 1

Motorcycle 50cc and

Moving from NE to S

Stopping

On main carriageway

Casualty Reference: 1

Age: 18

Male

Driver/rider

Severity: Slight Injured by vehicle: 1

Wednesday 18/09/2013 Time 1817 Slight at A41 BICESTER BYPASS RBT AT J/W VENDEE DRIVE CHESTERTON

E: 457241 N: 221165 Junction Detail: 1 Control 4

Fine without high winds

Road surface

Dry

Daylight

Vehicle Reference 1

Car

Moving from E to NE

Turning right

On main carriageway

Vehicle Reference 2

Motorcycle over 500

Moving from NE to S

Going ahead other

On main carriageway

Casualty Reference: 1

Age: 32

Male

Driver/rider

Severity: Slight Injured by vehicle: 2

Accidents between dates 01/01/2009 and 31/01/2014 (61) months

Selection:

Selected using Manual Selection

Notes:

Tuesday 24/09/2013 Time 1220 Serious at B4100 AT J/W NORTHERN ACCESS TO CAVERSFIELD LAYBY APPROX 820M N OF HOME FARM
CAVERSFIELD

E: 457622 N: 225774 Junction Detail: 9 Control 4

Fine without high winds Road surface Dry

Vehicle Reference 1 Motor Cycle over 50 Moving from N to S Daylight

Vehicle Reference 2 Overtaking moving vehicle O/S On main carriageway

Casualty Reference: 1 Age: 27 Female Driver/rider Severity: Serious Injured by vehicle: 1

Vehicle Reference 2 Goods 7.5 tonnes mg Moving from N to S Turning right On main carriageway

Monday 21/10/2013 Time 0530 Serious at B4100 FIELD ST J/W BUCKNELL ROAD BICESTER

E: 458215 N: 222851 Junction Detail: 3 Control 4

Fine without high winds Road surface Wet/Damp

Vehicle Reference 1 Car Moving from NE to S Darkness: street lights present and lit

Vehicle Reference 2 Pedal Cycle Moving from NE to S Going ahead other On main carriageway

Casualty Reference: 1 Age: 20 Female Driver/rider Severity: Serious Injured by vehicle: 2

AccsMap - Accident Analysis System

Accidents between dates 01/01/2009 and 31/01/2014 (61) months

Selection:

Notes:

Selected using Manual Selection

Tuesday 22/10/2013 Time 1530 Slight at KINGS END AT J/W LANE TO SPORTS CLUB JUST N OF MINI RBT J/W B4030 MIDDLETON STONEY ROAD
BICESTER

E: 457932 N: 222256 Junction Detail: 8 Control 4

Fine without high winds

Road surface

Wet/Damp

Moving from E to S

Daylight

Vehicle Reference 1 Car

Turning left

On main carriageway

Vehicle Reference 2 Pedal Cycle

Moving from N to S Overtaking nearside

On main carriageway

Casualty Reference: 1

Age: 47

Female

Driver/rider

Severity: Slight

Injured by vehicle: 2

Tuesday 19/11/2013 Time 1410 Slight at BUCKINGHAM RD AT PELICAN CROSSING APPROX 60M SW OF J/W WOODFIELD RD BICESTER

E: 458431 N: 223243 Junction Detail: 0 Control

Fine without high winds

Road surface

Dry

Daylight

Vehicle Reference 1 Car

Moving from NE to S Going ahead other

On main carriageway

Casualty Reference: 1

Age: 19

Female

Pedestrian

Severity: Slight

Injured by vehicle: 1

Tuesday 10/12/2013 Time 1310 Slight at A4095 SOUTWOLD LANE RBVT J/W B4100 BANBURY ROAD CAVERSFIELD

E: 458180 N: 224494 Junction Detail: 1 Control 4

Fine without high winds

Road surface

Wet/Damp

Daylight

Vehicle Reference 1 Car

Moving from W to E Going ahead other

On main carriageway

Casualty Reference: 1

Age: 32

Female

Driver/rider

Severity: Slight

Injured by vehicle: 1

AccsMap - Accident Analysis System

Accidents between dates 01/01/2009 and 31/01/2014 (61) months

Selection:

Notes:

Selected using Manual Selection

Friday 10/01/2014 Time 1128 Slight at MIDDLETON STONEY RD APPROX 100M SE OF J/W SHAKESPEARE DRIVE BICESTER

E: 457070 N: 222520 Junction Detail: 0 Control

Fine without high winds

Road surface

Wet/Damp

Daylight

Vehicle Reference 1 Car

Moving from N to SE

Going ahead other

On main carriageway

Vehicle Reference 2 Car

Moving from N to SE

Going ahead but held up

On main carriageway

Casualty Reference: 1

Age: 55

Male

Driver/rider

Severity: Slight

Injured by vehicle: 2

Friday 17/01/2014 Time 1639 Slight at OXFORD RD APPROX 45M S OF MINI RBT J/W B4030 MIDDLETON STONEY RD BICESTER

E: 457899 N: 222195 Junction Detail: 0 Control

Fine without high winds

Road surface

Wet/Damp

Darkness: street lights present and lit

Vehicle Reference 1 Car

Moving from S to NE

Going ahead other

On main carriageway

Vehicle Reference 2 Car

Moving from S to NE

Going ahead but held up

On main carriageway

Casualty Reference: 1

Age: 20

Female

Driver/rider

Severity: Slight

Injured by vehicle: 2

Vehicle Reference 3 Car

Moving from S to NE

Going ahead but held up

On main carriageway

Casualty Reference: 2

Age: 33

Female

Driver/rider

Severity: Slight

Injured by vehicle: 3

Vehicle Reference 4 Bus or coach

Moving from S to NE

Going ahead but held up

On main carriageway

Accidents between dates 01/01/2009 and 31/01/2014 (61) months

Selection:

Selected using Manual Selection

Notes:

Friday 24/01/2014 Time 1705 Slight at A41 OXFORD ROAD J/W PIONEER WAY BICESTER

E: 457621 N: 221655 Junction Detail: 3 Control 2

Raining without high winds Road surface Wet/Damp

Darkness: street lights present and lit

Vehicle Reference 1 Goods 7.5 tonnes mg Moving from NE to S

Stopping

On main carriageway

Vehicle Reference 2 Car

Moving from NE to S

Going ahead but held up

On main carriageway

Casualty Reference: 1

Age: 52

Female

Driver/rider

Severity: Slight Injured by vehicle: 2

AccsMap - Accident Analysis System

Accidents between dates 01/01/2009 and 31/01/2014

(61) months

Selection:

Notes:

Selected using Manual Selection

Accidents involving:

	Fatal	Serious	Slight	Total
Motor vehicles only (excluding 2-wheels)	2	10	79	91
2-wheeled motor vehicles	0	3	11	14
Pedal cycles	0	1	8	9
Horses & other	0	0	0	0
Total	2	14	98	114

Casualties:

	Fatal	Serious	Slight	Total
Vehicle driver	1	4	79	84
Passenger	1	5	30	36
Motorcycle rider	0	3	11	14
Cyclist	0	1	7	8
Pedestrian	1	4	9	14
Other	0	0	0	0
Total	3	17	136	156

Number of casualties meeting the criteria: 156