

Figure 52: Trenches 512 and 529: sections

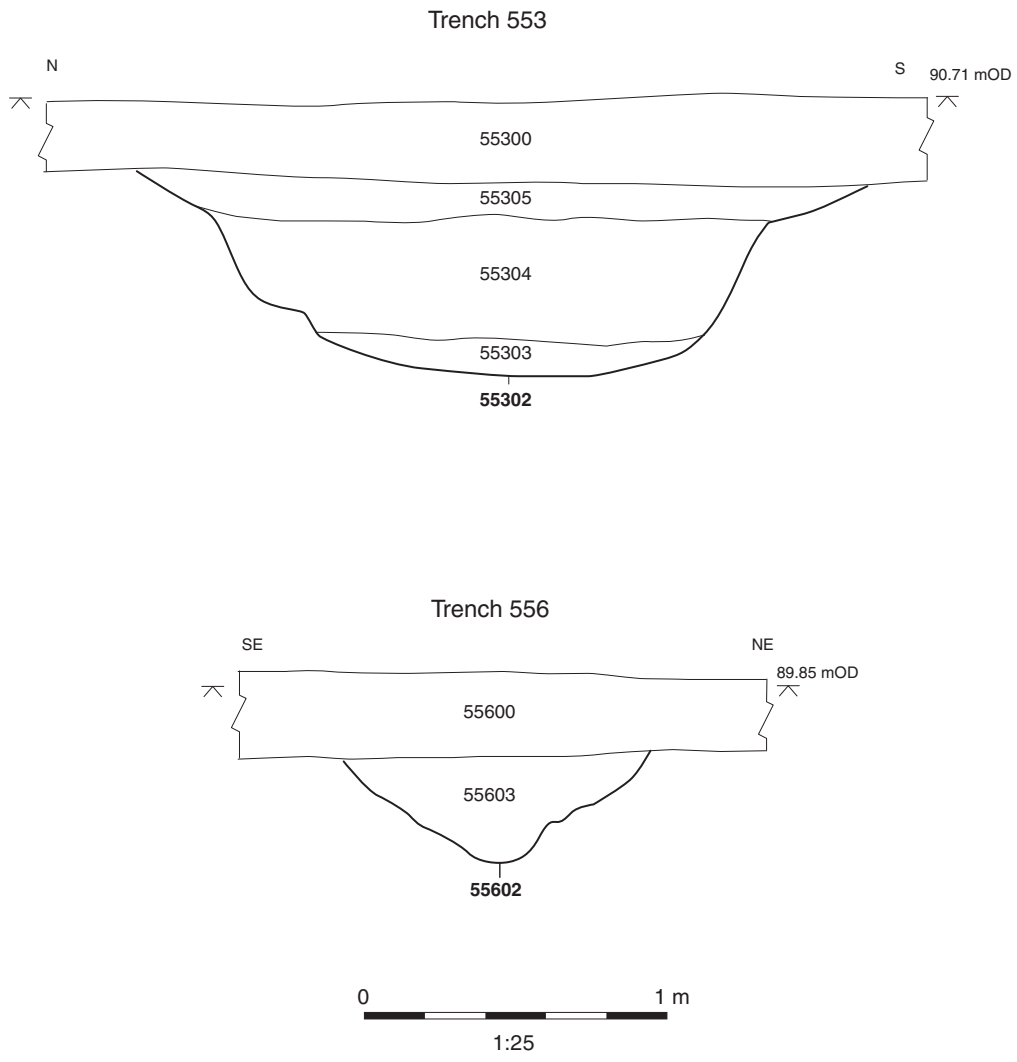


Figure 53: Trenches 553 and 556: sections

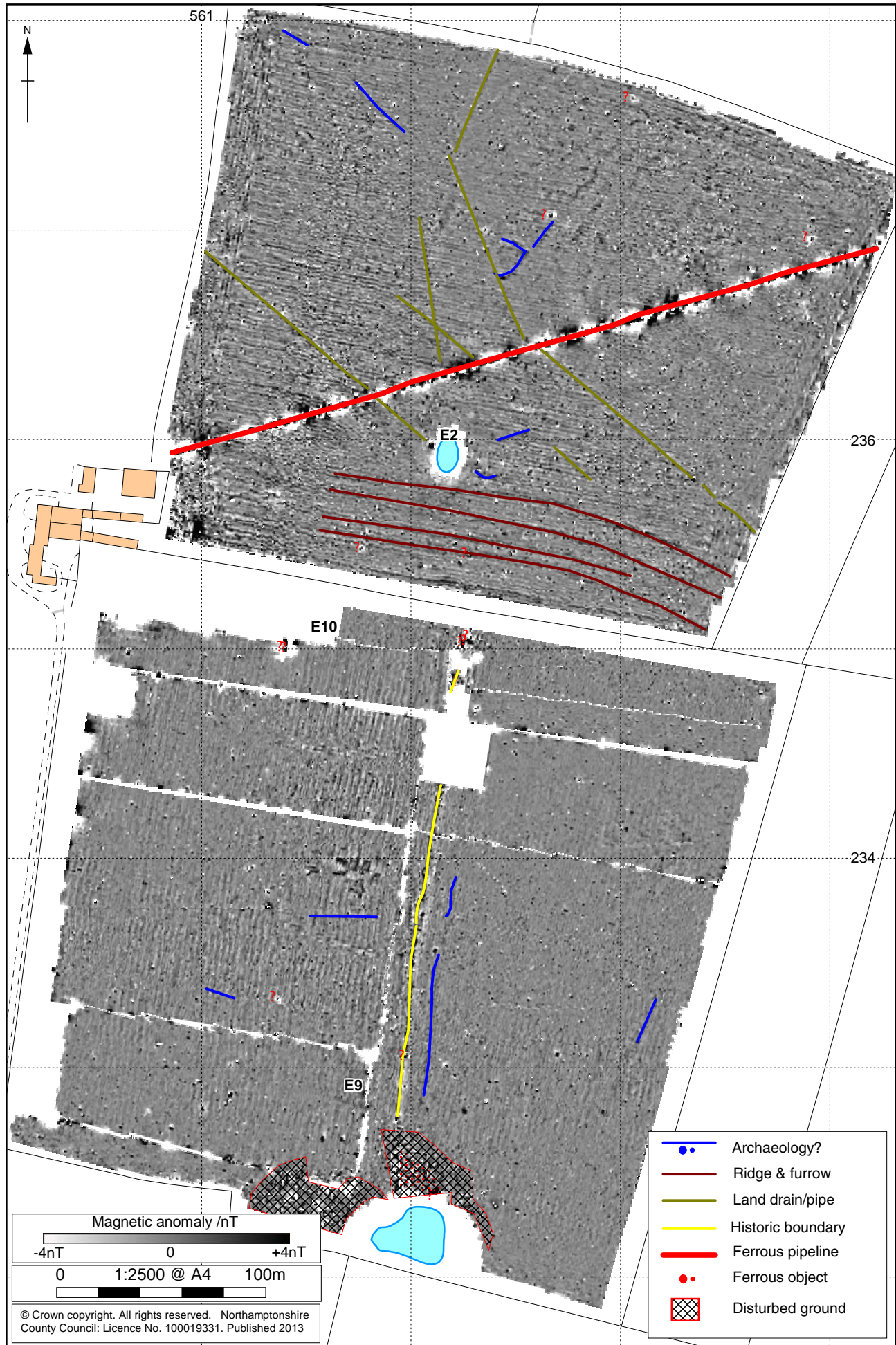
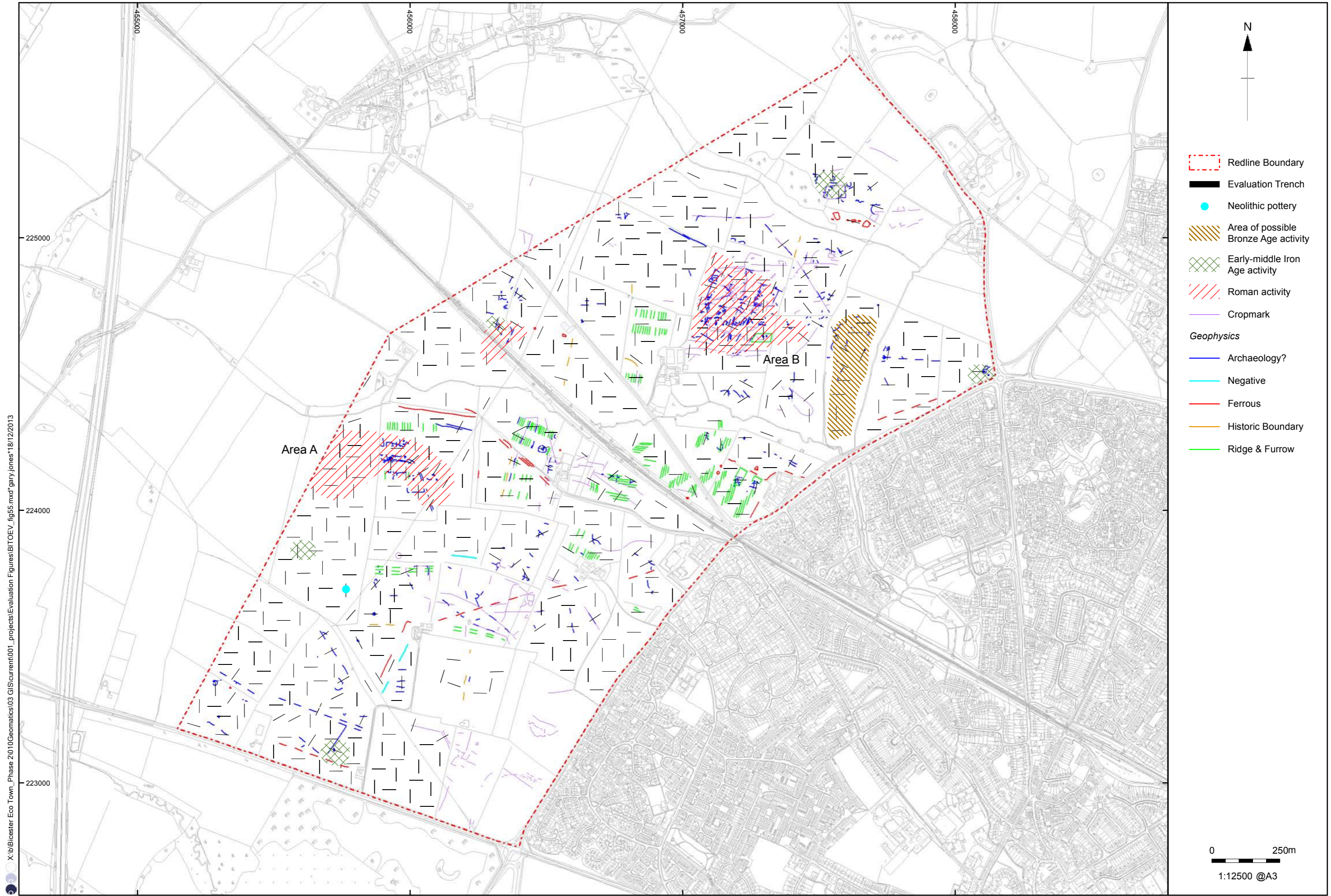


Figure 54: Additional geophysical survey



X:\Bicester Eco Town_Phase 2\10\Geomatics\03_GIS\current\001_projects\Evaluation Figures\BITOEV_fig55.mxd\gary.jones\18/12/2013

Figure 55: Archaeological Zones



Plate 1: Trench 13: Feature 1303, looking north-west



Plate 2: Trench 48: Feature 4804, looking south



Plate 3: Trench 92: Feature 9203, looking south



Plate 4: Trench 97: Feature 9703, looking south-west



Plate 5: Trench 99: Feature 9903, looking north-east



Plate 6: Trench 100: Fill 10004, looking west



Plate 7: Trench 100: Feature 10005, looking east



Plate 8: Trench 112: Feature 11204, looking east



Plate 9: Trench 114: Feature 11407, looking west



Plate 10: Trench 114: Feature 11412, looking south



Plate 11: Trench 114: Feature 11410, looking north-west



Plate 12: Trench 119: Feature 11905, looking east



Plate 13: Trench 123: Feature 12303, looking north-west



Plate 14: Trench 169: Feature 16903, looking east



Plate 15: Trench 172: Feature 17204, looking south-east



Plate 16: Trench 173: General view, looking north-east



Plate 17: Trench 173: Feature 17307, looking west



Plate 18: Trench 174: Feature 17404, looking west



Plate 19: Trench 177: Feature 17702, looking north-west



Plate 20: Trench 177: Feature 17704, looking north-west