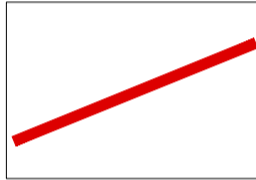


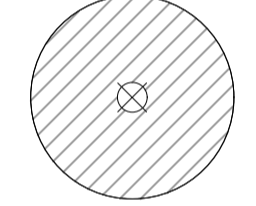
**PLANT SCHEDULE - BICESTER ECO-TOWN NORTH FRONTAGE**

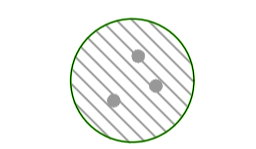
Trees	Root condition	Height	Breaks	Transplanted	Girth	Form	Qty. No.
Acer campestre	Bare Root	250-300cm	5	3x	8-10cm	Feathered	1
Quercus robur	Bare Root	175-200cm	5	2x		Feathered	2
Quercus robur Fastigiata	Root Ball	min 450cm	3	3x	25-30cm	Semi Mature	2

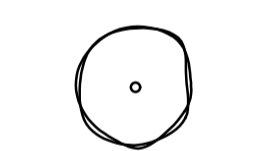
Native Hedge Mix (Total Area 125m2)	Root condition	Height/Spread/Age @ Planting	%	Qty. No. 500c/s
Crataegus monogyna	Bagged	60-80cm 1+1	40	200
Cornus sanguinea	Bagged	40-60cm 1+1 min. 3 breaks	20	100
Corylus avellana	Bagged	60-80cm 1+2 min. 3 breaks	4	20
Ilex aquifolium	Container	40-60cm 2L leader with laterals	5	25
Ligustrum vulgare	Bagged	60-80cm 1+1 min. 5 branches	5	25
Prunus spinosa	Bagged	60-80cm 1+1 min. 3 branches	12	60
Rosa arvensis	Bagged	60-80cm 1+1 min. 2 branches	4	20
Rosa canina	Bagged	60-80cm 1+1 min. 3 branches	4	20
Sambucus nigra	Bagged	60-80cm 1+1 min. 3 branches	2	10
Viburnum lantana	Bagged	60-80cm 1+2 min. 3 branches	2	10
Viburnum opulus	Bagged	60-80cm 1+2 min. 3 branches	2	10


Shrubs (Total Area 6m2)	Root condition	Height/Spread/Age @ Planting	Qty. No.%
Lonicera pileata	3L Container	30-40cm Diameter, Bushy, min. 6 breaks	38


 BOUNDARY FOR FRONTAGE DEVELOPMENT

 QUERCUS ROBUR FASTIGIATA

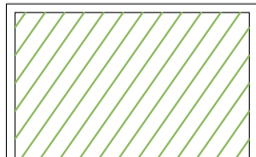
 FEATHERED TREES

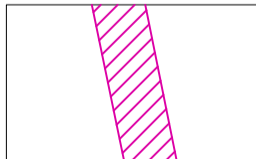
 EXISTING TREES TO BE RETAINED

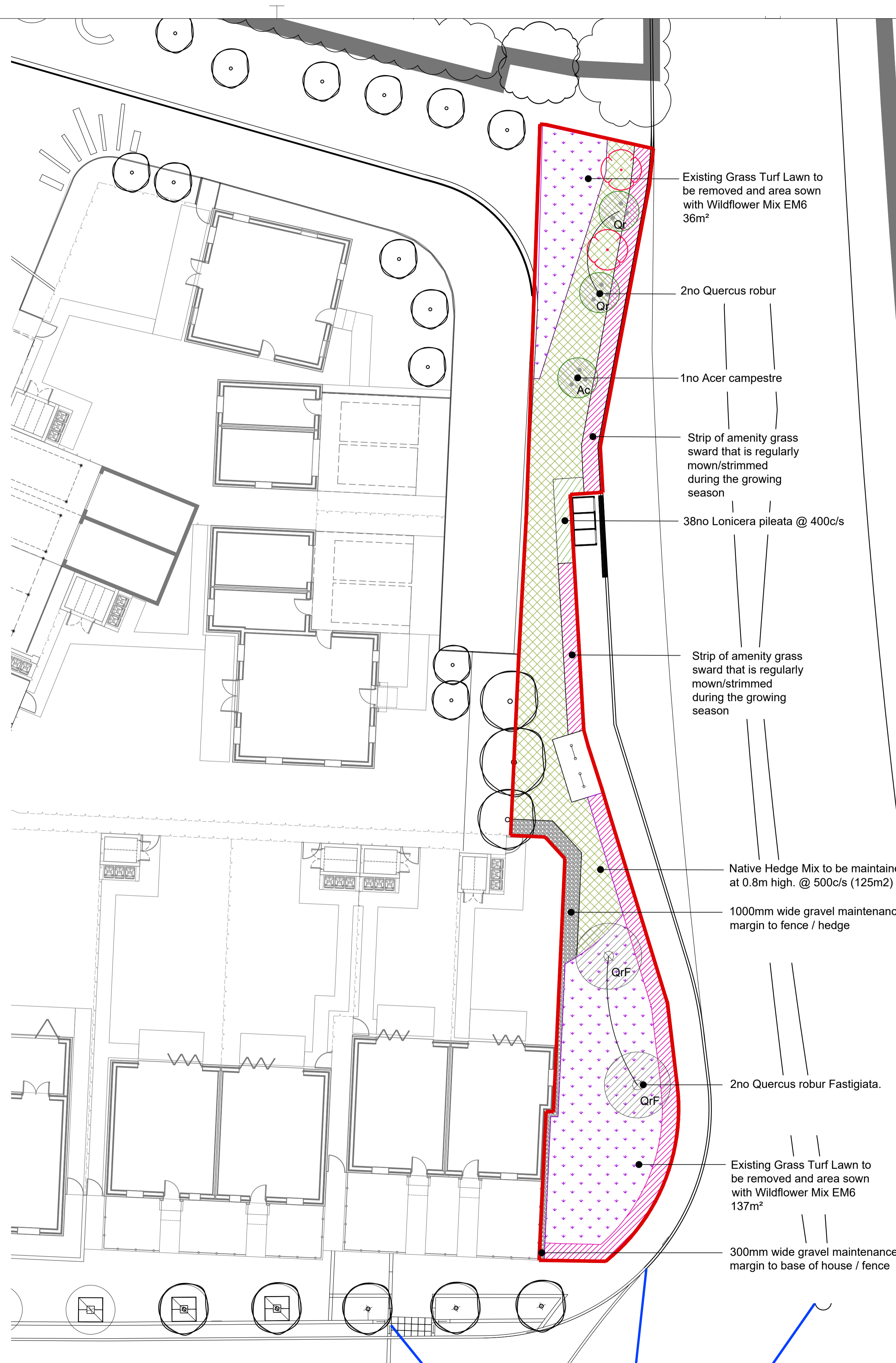
 EXISTING TREES TO BE REMOVED

 EXISTING GRASS TURF LAWN TO BE REMOVED AND AREA SOWN WITH WILDFLOWER MIX EM6 150m<sup>2</sup>

 NATIVE HEDGE MIX

 SHRUB

 1m MOWN STRIP TO CARRIAGEWAY EDGE



All dimensions to be verified on site. Figured dimensions to take precedent to those scaled. Any areas indicated on this drawing are for guidance only, no responsibility is taken for their accuracy. The drawing is the property of Applied Landscape Design Limited. Copyright is reserved by them and the drawing is issued on the condition that it is not copied, reproduced, retained or disclosed to any unauthorized person, either wholly or in part without the written consent in writing of Applied Landscapes.

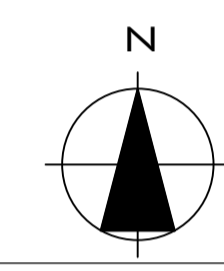
© 2014 Applied Landscape Design Limited. All rights reserved.

CDM/H&S:  
CDM RISKS  
The works illustrated on this drawing have been reviewed against the Design CDM Risk Register and significant risks are noted as:

- Construction:
- Working in close proximity to highway
- Maintenance:
- Working in close proximity to highway
  - Tree Hedge Pruning
- Demolition:
- Working in close proximity to highway

NOTES / KEY:  
All landscaping to be implemented in accordance with BS4428:1989 Code of Practice for general landscape operations (Excluding hard surfaces) and BS8545:2014 'Trees: from nursery to independence in the landscape - Recommendations'

Refer to Hyder drawing 7207 for adoptable highway



REFERENCE DRAWINGS/DOCUMENTS

701-1102-06	Infrastructure Planting Schedule by HYDER
701-929-04	Perimeter Planting Plan by HYDER

REVISIONS

no.	issued	date
P05	Amended to reflect LPA comments in September 2019	24.09.2019
P04	Minor redline amendment around the bus shelter	23.07.2019
P03	Amended to reflect 2019 position and meeting with LPA	24.06.2019
P02	Planning	23.01.15
P01	Information	05.12.14

CLIENT:  
**A2DOMINION**

LANDSCAPE ARCHITECT:  
**ALD** applied landscape design  
The Threshing Barn, Bignell Park  
Barns, Chesterton, Nr. Bicester,  
Oxfordshire OX26 1TD  
Tel: 01869 249776  
Fax: 01869 327513  
Email: mail@appliedlandscape.co.uk

PROJECT:  
**BICESTER ECO TOWN  
EXEMPLAR SITE**

DRAWING TITLE:  
**NORTH FRONTAGE  
SOFT LANDSCAPE PLAN  
FINAL SCHEME**

drawn: AF	checked: OM
scale: 1:150 @A1	date: 05.12.2014
status: Planning	xref file ref: ALD654_PLbase-Final-Fron

PROJECT NO. ALD654	DRAWING NUMBER: PL402	REVISION: P05
-----------------------	--------------------------	------------------