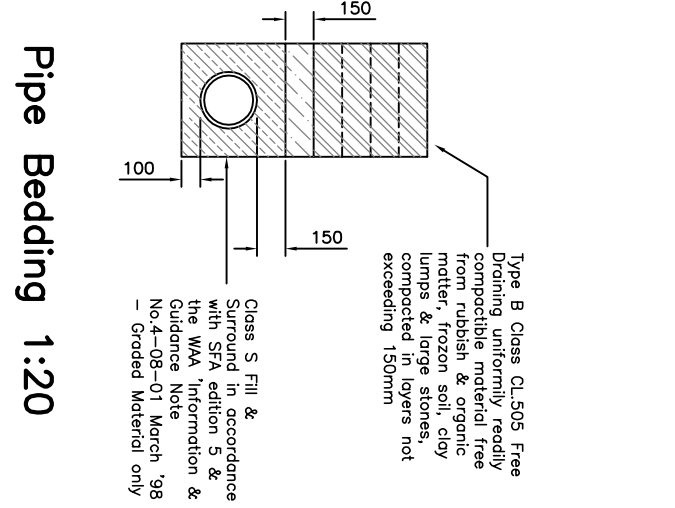
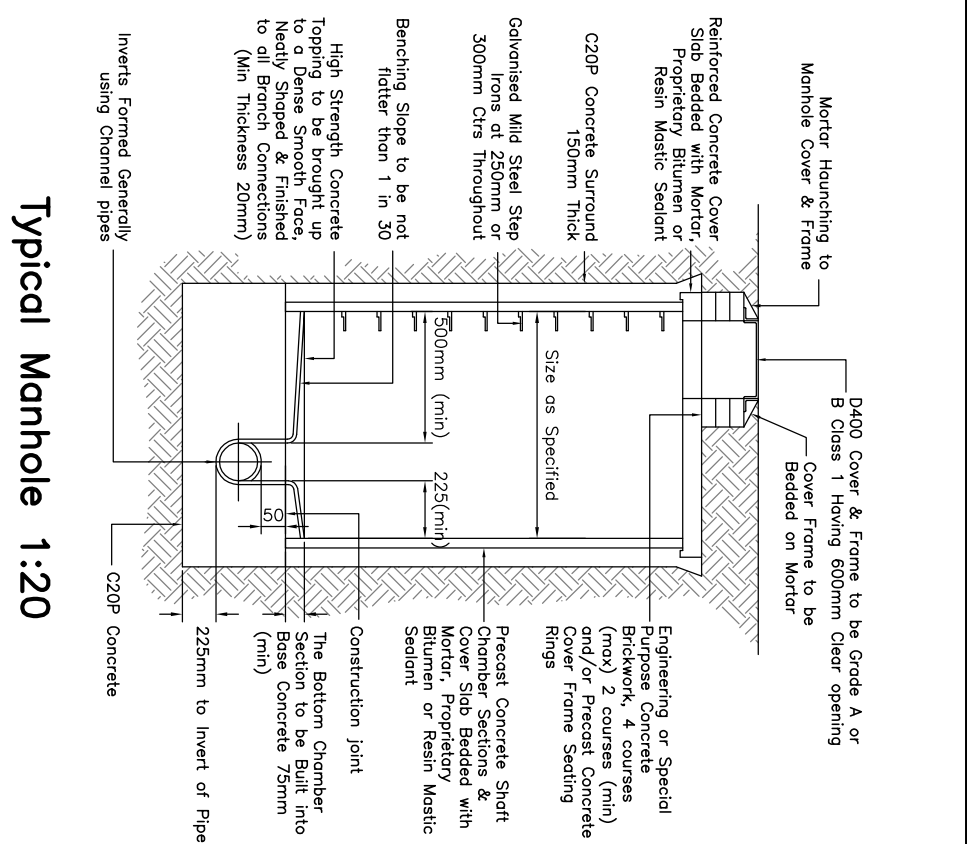
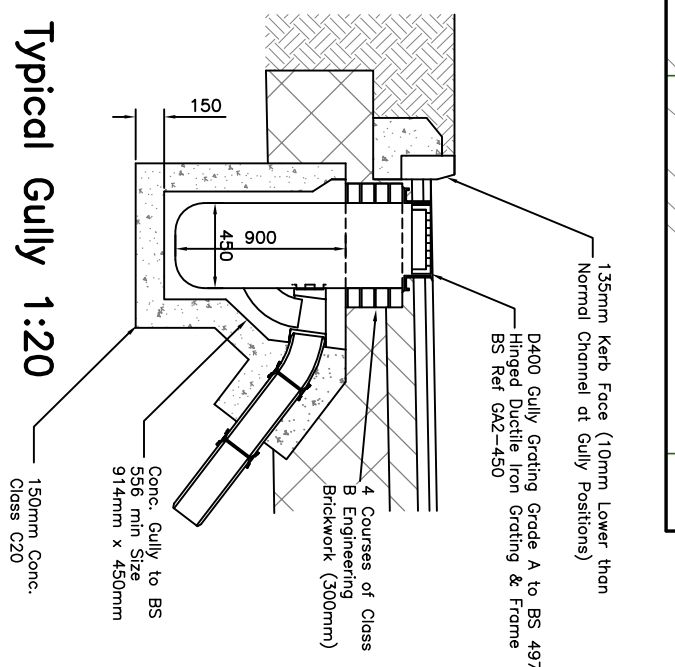
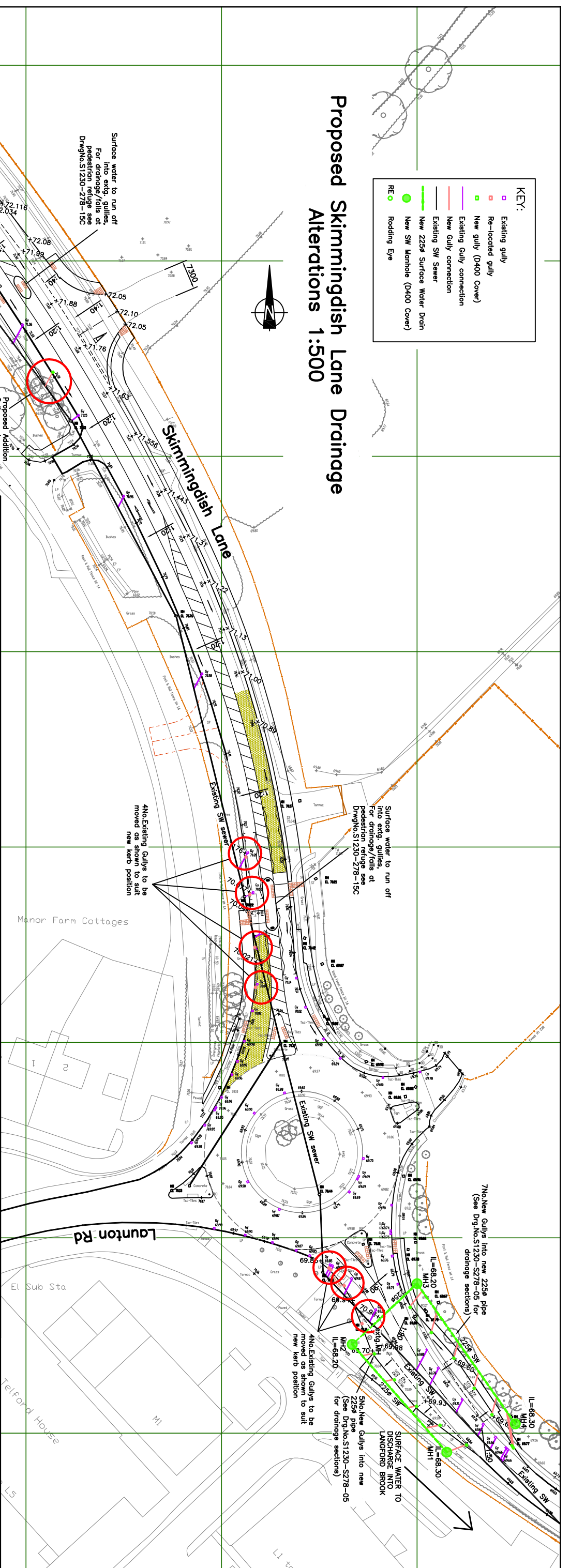


KEY:	
	Existing gully
	Re-located gully
	New gully (D400 Cover)
	Existing Gully connection
	New Gully connection
	Existing SW Sewer
	New 225a Surface Water Drain
	New SW Manhole (D400 Cover)
	Rodding Eye

Proposed Skimmingdish Lane Drainage Alterations 1:500



S278 Application

C	23.08.16	Updated to OCC comments (27.07.16)
B	11.07.16	Updated to OCC comments
A	24.06.16	Road Safety Audit stage 2

LINK 9
Skimmingdish Lane
Bicester

Albion Land Ltd

**Section 278 works
Drainage Alterations**

BAILEY JOHNSON HAYES
Consulting Engineers

ST/ALBANS: Site 4, Phoenix House, 63 Campfield Rd, ST ALBANS, Herts AL1 9TL
MANCHESTER: Orange House, John Dalton Street, MANCHESTER, M2 6RW
Scale 1:500 @A1
Date 23.05.16
Drawn DJC

S1230-S278-04C