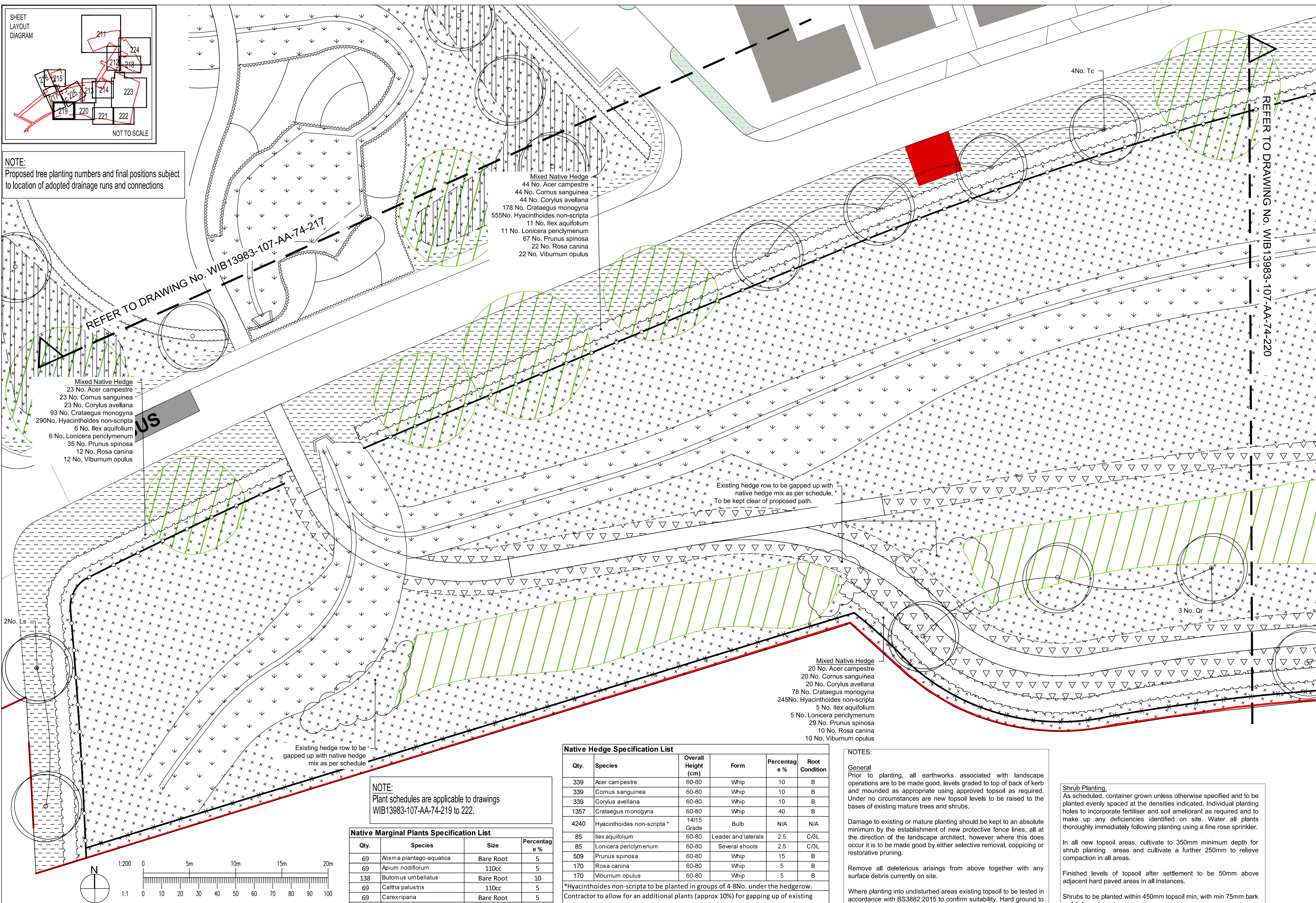


NOTE:
Proposed tree planting numbers and final positions subject to location of adopted drainage runs and connections.



NOTE:
Plant schedules are applicable to drawings
WIB13983-107-AA-74-219 to 222.

Native Marginal Plants Specification List				
Qty.	Species	Size	Percentage %	
69	Alisma plantago-aquatica	Bare Root	5	
69	Apium nodiflorum	110cc	5	
138	Butomus umbellatus	Bare Root	10	
69	Caltha palustris	110cc	5	
69	Carex riparia	Bare Root	5	
69	Eriophorum angustifolium	110cc	5	
69	Glyceria maxima	110cc	5	
69	Mentha aquatica	110cc	5	
69	Myosotis scorpioides	110cc	5	
69	Nasturtium officinale	110cc	5	
69	Ranunculus flammula	110cc	5	
69	Sagittaria sagittifolia	Bare Root	5	
69	Scirpus lacustris	110cc	5	
69	Scrophularia auriculata	230cc	5	
69	Sparganium erectum	Bare Root	5	
138	Typha angustifolia	230cc	10	
69	Typha latifolia	230cc	5	
69	Veronica beccabunga	110cc	5	

All marginal plants available from: British Flora Tel :+44 (0)1684 21

Native Hedge Specification List					
Qty.	Species	Overall Height (cm)	Form	Percentage %	Root Condition
339	Acer campestre	60-80	Whip	10	B
339	Cornus sanguinea	60-80	Whip	10	B
339	Corylus avellana	60-80	Whip	10	B
1357	Crataegus monogyna	60-80	Whip	40	B
4240	Hyacinthoides non-scripta *	14/15 Grade	Bulb	N/A	N/A
85	Ilex aquifolium	60-80	Leader and laterals	2.5	C/3L
85	Lonicera periclymenum	60-80	Several shoots	2.5	C/3L
509	Prunus spinosa	60-80	Whip	15	B
170	Rosa canina	60-80	Whip	5	B
170	Viburnum opulus	60-80	Whip	5	B

*Hyacinthoides non-scripta to be planted in groups of 4-8No. under the hedgerow.
Contractor to allow for an additional plants (approx 10%) for gapping up of existing hedgerow with new native hedge mix as per above schedule.

Amenity Planting List					
Qty.	Species	Height/Spread (cm)	Habit	Planting Density (m ²)	Pot Size (l)
14	Allium 'Globemaster'	4/5 Grade	Herbaceous bulb	N/A	N/A*
130	Cornus sanguinea 'Mid-winter Fire'	60/80	Branched	2.5	10-12
25	Forsythia x intermedia 'Lynwood Variety'	60/80	Branched	1	5-7.5
129	Hebe rakaiensis	30/40	Bushy	3	10-12
231	Vinca minor**	30/40	Several shoots	3	3

* Allium bulbs to be planted in clumps of 4-5 No. within the planting bed
** Vinca minor to be planted as ground cover planting at an even density.

NOTES:

General
Prior to planting, all earthworks associated with landscape operations are to be made good, levels graded to top of back of kerb and mounded as appropriate using approved topsoil as required. Under no circumstances are new topsoil levels to be raised to the bases of existing mature trees and shrubs.

Damage to existing or mature planting should be kept to an absolute minimum by the establishment of new protective fence lines, all at the direction of the landscape architect, however where this does occur it is to be made good by either selective removal, coppicing or restorative pruning.

Remove all deleterious arisings from above together with any surface debris currently on site.

Where planting into undisturbed areas existing topsoil to be tested in accordance with BS3882:2015 to confirm suitability. Hard ground to be broken up thoroughly and visible roots/ large stones with diameter >100mm to be removed. Turf or thick swards to be dug over to full depth of topsoil.

Where planting into disturbed areas/ made ground min 450mm topsoil to be used.
Where grass seeding/turfing into disturbed areas/ made ground min 150mm topsoil to be used.

Trees
Excavate tree pits for all trees as follows: 100mm deeper than the rootball and 500mm wider than the rootball in order to accommodate roots when fully spread. Tree pits to be dug square to avoid root spralling.

Break up tree pit base with soil ameliorant worked into pit bottom. Backfill with excavated material mixed with slow release fertilizer.

Shrub Planting:
As scheduled, container grown unless otherwise specified and to be planted evenly spaced at the densities indicated. Individual planting holes to incorporate fertiliser and soil ameliorant as required and to make up any deficiencies identified on site. Water all plants thoroughly immediately following planting using a fine rose sprinkler.

In all new topsoil areas, cultivate to 350mm minimum depth for shrub planting areas and cultivate a further 250mm to relieve compaction in all areas.

Finished levels of topsoil after settlement to be 50mm above adjacent hard paved areas in all instances.

Shrubs to be planted within 450mm topsoil min, with min 75mm bark mulch to surface dressing.

Hedge planting:
Native hedge plants 1+2 transplants. Hedging to be planted at 500mm centres in a double staggered row, grouped in 3-6 plants of the same species within 450mm topsoil min, with min 75mm bark mulch to surface dressing. 4 plants per linear metre.

Wildflower meadow (undisturbed ground - including areas within the root protection areas of existing trees)
Soil: (general): 150mm min. subsoil
Soil: (within 10m radius of proposed trees): 150mm min. subsoil above 300mm min. topsoil.

Wildflower meadow (undisturbed ground - including areas within the root protection areas of existing trees)
Soil: Existing topsoil and subsoils to remain undisturbed and in-situ with minimum cultivation to allow seeding

- LEGEND
- CONSTRUCTION PHASE 1A BOUNDARY
 - PROPOSED TREE PLANTING. Refer to Planting Schedule.
 - EXISTING TREES AND HEDGEROWS TO BE RETAINED. To be protected during construction works.
 - PROPOSED NATIVE HEDGEROW MIX PLANTING. Refer to Planting Schedule.
 - PROPOSED NATIVE MARGINAL MIX PLANTING. Refer to Planting Schedule.
 - PROPOSED AMENITY GRASS. Tillers 'Low Maintenance Turf' or similar approved, supplied to BS3969. Over 150mm min. topsoil and 350mm subsoil.
 - PROPOSED WILDFLOWER MEADOW. Disturbed ground: Boston Seeds 'BS5. Heavy Clay Soils Mixture' or similar approved at 5g/m². Undisturbed ground: Boston Seeds 'BSRE 100% Restore & Enrich Mixture' or similar approved at 3g/m².
 - PROPOSED MOWN PATH THROUGH WILDFLOWER MEADOW. Refer to specification document for maintenance details.
 - PROPOSED VERGE Refer to Drawing no: WIB13983-107-AA-74-254 for planting details.
- FOR PROPOSED HARD LANDSCAPE DETAILS REFER TO DRAWINGS WIB13983-107-AA-74-319 to 322.

NOTE:

Main contractor to determine exact location of services/drainage, this should be confirmed on site prior to commencement of works to avoid tree pit / services conflicts.

External levels of hard surface treatments are to be co-ordinated with Engineers design & specifications.

All treatment of softwork areas to comply to BS4428 Code of Practice for general landscape operations.

This drawing assumes that the existing site subsoil could be re-used. However this is subject to detailed testing and analysis of subsoil.

Trees: from nursery to independence in the landscape - Recommendations

- BS 8545:2014

Recommendations for Transplanting Rootball Trees:

- BS 4043:1989

Code of Practice for General Landscape Operations:

- BS 4428:1989

Specifications for Topsoil:

- BS 3882:2015. (General Purpose Grade)

Specification for Subsoil:

- BS 8601:2013 (Multipurpose Grade)

Tree work - Recommendations:

- BS 3998:2010.

Rev	Date	Description	By
A	12.05.16	UPDATED TO SUIT NEW BOUNDARY	DD

Project

GRAVEN HILL, BICESTER

Title

INFRASTRUCTURE AND LANDSCAPE WORKS PHASE 1a
SOFT LANDSCAPE DESIGN
(SOUTHERN PATH SHEET 1)

Client


Graven Hill Village Development Company

Merchants House Wapping Road Bristol BS1 4RW
1 0117 937 8200
mail@watermangroup.com www.watermangroup.com

Drawing Status

PLANNING

Designed by LB/ TAA Checked by TAA Project No. WIB13983

Drawn by LB/ DD Date February 2016 Work Order No. 107

Scales A1
work to figured dimensions only 1:200 @A1

Publisher	Zone	Category	Number	Revision
WIB	AA	74	219	A